



Louisiana Archaeological Society

NEWSLETTER

CHERIE A. SCHWAB, NEWSLETTER EDITOR
COASTAL ENVIRONMENTS, INC. BATON ROUGE, LOUISIANA 70802

Volume 31, No. 3

Winter 2004

FROM THE EDITOR

The Louisiana Archaeological Society will hold its annual meeting in Lafayette on February 11-13, 2005. The meeting announcement, final call for papers, and pre-registration forms are included in this issue. Please make sure to make your hotel reservations early.

The minutes from the August meeting of the LAS Executive Committee, held in Henderson, are included as well as a submission from LAS President John Polk. In addition, you will find a survey which was submitted by LAS Treasurer, Josetta LeBoeuf. The survey is to be used for a study on membership in state archaeological societies. You can use the form provided here and mail it to Josetta. You can also download a copy of the form from the LAS website and print it out and mail it or fill out the form on your computer and email it to Josetta. Your participation in this survey is greatly appreciated. Also, make sure to check out the "Announcements and News" section to read up on how you can help with the silent auction fundraiser being held at the annual meeting. The LAS can needs your help to make this a success.

The LAS has a new and improved brochure. The photography and images of Poverty Point figurines, which appear on the brochure, were funded, in part, by the LAS. The other images were provided by Josetta LeBoeuf and the Louisiana Division of Archaeology. We would really like to use the new brochure as a vehicle to help promote the society and increase membership. If you would like copies to distribute or place in libraries, schools, museums, etc., please

contact me at Coastal Environments, Inc., 225-383-7455.

The deadline for submissions for the next newsletter (Spring issue) is April 10th. Please send your chapter news, articles and any tidbits of info that you'd like to share with the Society.

See you at the meeting!

Cherie Schwab
Newsletter Editor

FROM THE PRESIDENT

I hope all of you had a nice Thanksgiving . . . I did. I spent it with my only daughter Patricia. Patricia went back to school to be a nurse and, with the help of the good Lord, and "the creek don't rise," will finish in this coming May. What makes this interesting is that Pat just made 40, is married, has three children to see after, and is making better grades now

Inside this issue . . .

Minutes of the Louisiana Archaeological Society Executive Committee Meeting, August 14, 2004 Henderson, Louisiana	2
Chapter News	5
LAS Members Survey	6
Announcements and News	7

than when she was 20 and I was paying the bills. I'm glad about it, just can't understand it.

Anyway, as most of you know, I have been working on increasing our membership by getting libraries and local high schools to become members. I feel that if we can get these institutions to become members, we will get new members from the exposure. This effort could be the source of the new blood that we need. I have had very good success with the libraries, in fact, every one I have talked to has promised to come aboard. The high schools have been another matter. They all like the idea, but it is hard to get them to implement it. I will continue to work on this and keep you all posted. I know that many of you go to libraries all the time, so the next time you go, bring a brochure and one of our bulletins and ask them to become members. You will be surprised how easy it is.

Now onto other business. The first Germans settled in St. Charles Parish around 1719. They were the first settlers to come to the new colony – not because they had to come but because they wanted to come. They came because they wanted to create a better life for themselves and their children. They settled near Taft. History tells us that they built villages in two stages. The first was located three fourths of a mile from the bank of the Mississippi, and the other a half mile from the river bank, leaving a four arpent cemetery between the two.

Through time the exact location of these villages has been lost. The St. Charles Historical Foundation would like to locate and preserve this important part of Louisiana history.

It was decided that the best way to locate the sites would be to do a fly over using electronic reconnaissance (thermal imaging). Money for this was donated by Dow Chemical Company and the fly over was made earlier this year. Several anomalies were found and as of this writing we are making arrangements to investigate them.

I have the thermal imaging pictures on disc. They cover the entire area of Taft in St. Charles Parish. If anyone is working in the area, they are welcome to peruse the images.

We have had some very good executive board meetings this year and I am looking forward to seeing you all at our 31st annual meeting in Lafayette.

I wish all of you a Merry Christmas and a very happy, prosperous and healthy new year.

John Polk
LAS President

MINUTES OF THE LOUISIANA ARCHAEOLOGICAL SOCIETY EXECUTIVE COMMITTEE MEETING

August 14, 2004
Henderson, Louisiana

Reported by
Maureen Downey

The Executive Committee of the Louisiana Archaeological Society met Saturday, August 14, 2004, in Henderson, Louisiana. President John Polk called the meeting to order.

Members present were

John Polk - LAS President
Ellen Ibert - LAS Vice President/President-Elect
Joe Saunders - Past President
Josetta LeBoeuf - LAS Treasurer
Chip McGimsey - LAS Bulletin Editor
Junior Doughty - Web Editor
Skip Neufield - Delta Chapter Representative
Reca Jones - Northeast Chapter Representative
Lena Polk - Delta Chapter

MINUTES

A question was raised by Josetta LeBoeuf regarding the wording regarding sustaining members in the May 15, 2004 minutes. Josetta made a motion to amend the minutes to state only one known sustaining member. Ellen Ibert seconded the amendment that was passed unanimously. Chip McGimsey then made a motion to accept the minutes of the May 15, 2004 meeting of the LAS Executive Committee as amended. Ellen Ibert seconded the motion. The motion was passed unanimously.

REPORTS

Vice President

Ellen Ibert reported that LAS At-Large Representative Charles Parker has taken a position out-of-state. This will make it difficult to attend Executive Committee meetings. She remarked that the Executive Committee might wish to consider taking some action in regard to this matter. She then apologized for not being able to distribute her report, on the previous vote on guidelines for publishing in LAS Publications, to the Newsletter Editor and the Executive Committee members earlier. Discussion followed. President Polk asked anyone with comments, input, or questions after reading the report to please contact him. He also asked Chapter Representatives to discuss the matter with their chapter members. Junior will place the information on the web site. Since the report was not distributed in advance, a vote on the matter was deferred until the next Executive Committee meeting allowing the members the opportunity to study Ellen's report in order to make a more educated decision.

Treasurer

Treasurer Josetta LeBoeuf reported that the LAS checking account balance was \$6,691.65. Income included some publication sales from the last Annual Meeting and expenditures included fees to reinstate the LAS Charter.

Membership

Josetta LeBoeuf reported that the LAS now has 201 members. John will compare past membership lists with the present list and contact members who have not renewed. John Polk again encouraged committee members to recruit libraries and institutions in their parish as members. Josetta LeBoeuf brought up for discussion the number of members that must belong to the LAS in each chapter. The Committee decided that this should be reviewed. John thanked Josetta for her report.

Bulletin Report

Chip McGimsey reported that he has in hand articles for the next LAS Bulletin. He remarked that the next bulletin could better be used to estimate future costs of bulletins rather than Bulletin No. 26, which had many startup expenses associated with its publication. The possibility of obtaining grants to help with publication of Bulletins was discussed. John Polk again emphasized the need to bring the bulletins up-to-date. Chip agreed and stated that he believed this could be possible within several years. John thanked Chip for all his hard work.

Newsletter Report

Josetta LeBoeuf reported for Newsletter Editor Cherie Schwab who was unable to make the meeting. Cherie plans to mail the next Newsletter by the end of August. Cherie obtained publication prices for the new LAS brochures. Color brochures are 1000 copies for \$595, 1500 for \$640, and 2000 for \$675. After discussion, the Executive Committee decided it was most economical to purchase 2000 copies for \$675. Ellen Ibert motioned that 2000 color brochures with the existing logo be purchased after Executive Committee review and approval. Josetta LeBoeuf seconded the motion that was then passed unanimously.

Web Site

Junior Doughty reported that hits to the web site were off. He stated that Annual Meeting information could be obtained from the LAS web site. Registration for the meeting can also be done through the web site. Junior requested time during a future meeting to explain the process for submitting photos to the web site. Check the web site out often since Junior is continually updating and improving the site.

CHAPTER REPORTS

Delta Chapter

Skip Neufield, Delta Chapter Representative, reported that Delta Chapter was having problems, mainly with falling membership perhaps due in part to declining activities, although Skip emphasized that the Chapter usually has excellent speakers. It is also difficult to get persons to serve as officers. Skip is sure the problems are not unique to Delta Chapter and that many of the problems will still be there after the reorganization, so he commented that any insight into solutions would be appreciated.

West Louisiana Archaeology Club

Ellen Ibert reported for the WLAC. She reported that the Chapter has a monthly meeting at which meeting they usually have a speaker. However, she said they do not have many members who attend meetings on a regular basis. The chapter is to do some testing in February at a site that could possibly qualify for the National Register because it could supply information on the Attakapa in Louisiana. Since the local museum in Leesville is selling T-shirts like those from the Annual Meeting with only Louisiana Archaeology printed on them, the WLAC wishes to deposit the funds in an account, and has requested information to do so from Josetta.

Baton Rouge Chapter

Josetta LeBoeuf reported for Baton Rouge Chapter. She said that Baton Rouge has many of the same problems that Delta Chapter is having. They also have problems with no one wishing to serve as officers. She said that although they have great speakers every month, they do not have as many members attending meetings as they should. She spoke of the next meetings coming up and invited others to attend. She said that Baton Rouge Chapter would be holding its September meeting in conjunction with Archaeology Week. This could benefit both the Chapter with possible new members and Archaeology Week. Josetta said that she would be pleased to share her speaker contacts with other chapters.

Northeast Chapter

Joe Saunders reported. He remarked that the Northeast Chapter was the oldest chapter but that it was also experiencing many of the same problems as the other chapters, especially in attendance. The Northeast Chapter has monthly meeting with speakers.

ONGOING/UNFINISHED BUSINESS

Annual Meeting Profits

The vote on allowing hosts of Annual Meetings to retain percentage of profits over amount given by LAS was deferred until the next Executive Committee meeting, since Nancy Affeltranger, who proposed the motion, was unable to attend the meeting.

2005 Annual Meeting

The 2005 Annual Meeting will be held in Lafayette, Louisiana. The date will be February 11 - 13, 2005. As reported in the last minutes, a silent auction is to be held at future Annual Meetings. Donations for that auction were discussed. John commented that Chip has worked extremely hard on the 2005 Annual Meeting and that it promises to be a really good one.

NEW BUSINESS

Archaeology Week

Josetta LeBoeuf announced that Archaeology Week would be September 26 - Oct 2, 2004. She remarked that the schedules should be distributed next week. She reported on events being held this year and encouraged everyone to attend as many as possible. She also emphasized that Archaeology Week is a good time for Chapters to recruit new members.

ANNOUNCEMENTS

Joe Saunders is looking for a graduate student to help with a project.

John Guy's mother is not doing well. His family is having other medical problems and there have been recent deaths. The LAS extends its sympathies.

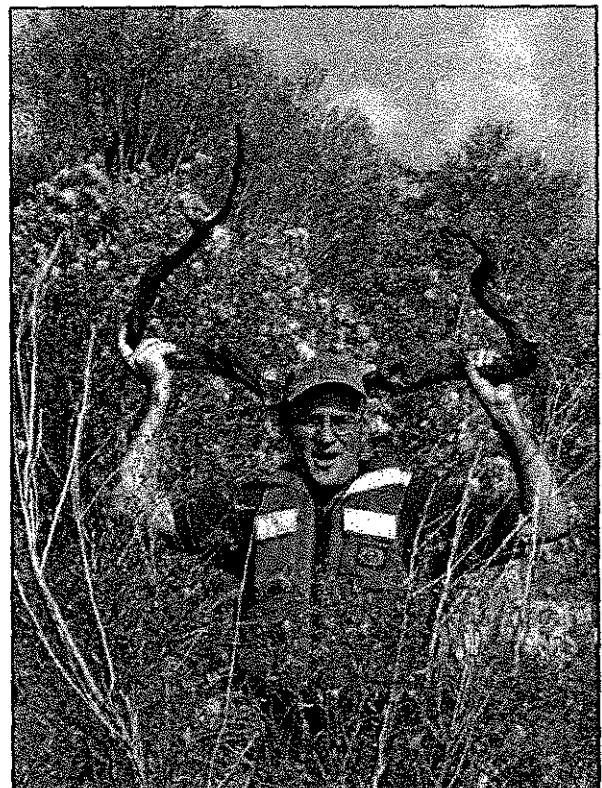
Archaeology Week - September 16 - October 2, 2004.

The next Executive Committee meeting will be November 13, 2004 in Marksville, Louisiana, at 10:30 a.m.

There being no further business, a motion was made by Chip McGimsey and seconded by Ellen Ibert to adjourn the meeting. Motion passed unanimously and President John Polk adjourned the meeting.

Just for Fun!

Jason Emery submitted this photo of Duke Rivet while the Division of Archaeology was visiting several sites along the Eastern Shore of Lake Salvador. Tom Eubanks is the photographer.



The Archaeologist in his natural habitat. Duke Rivet continues to "stick" around with the Louisiana Division of Archaeology.

chapter news

BATON ROUGE

The Baton Rouge Chapter meets at 7:00 pm on the last Wednesday of each month at the Bluebonnet Public Library.

All are welcome!

For more information contact:

Josetta LeBoeuf

225-767-4974

josieaz@bellsouth.net

Members from the Baton Rouge Chapter held a demonstration of prehistoric hunting technology as part of Experience Atchafalaya Days this past October. The program was held in conjunction with a Hunter's Safety course offered by the Louisiana Department of Wildlife and Fisheries at the Sherbourne Wildlife Management Area near Krotz Springs. Thanks goes out to Lloyd Pine who demonstrated the use of the atlatl, traditional bow and blowgun. Thanks also to Jerry Hutchinson who provided an excellent demonstration of flintknapping techniques.

Members have also been involved with helping Stephanie Perrault with the testing of a late prehistoric (Mississippi Period) site at Angola Penitentiary. Fieldwork so far has consisted of mapping, augering and the excavation of 1x1 units. More to come once the fieldwork is completed.

CENTRAL LOUISIANA

The LAS Archaeology Week was held at Tioga High School on September 26, 2004. There were demonstrations of flintknapping, Mr. Julian Thompson had a great display of a multitude of various stones and demonstrated with great ease and skill when making the arrow heads & spears. Mrs. Nancy Affeltranger showed everyone how to do bow & pump drilling. Also Mr. Joseph Tullier was the instructor for the Ishak Natau Native American Dancing. Mr. Charles Neal gave a talk entitled "Who's Digging up the Mansfield Battleground"? Our state battlefield is being destroyed for the lignite coal underneath it. Thank you to Mr. Neal. It was a special treat to all who enjoyed your important, educational speech. Other members who shared their various collections from sites included Charles and Nancy Affeltranger, Tommy Delrie and Kathleen Adams. Caitlin Connor also had a booth where she had on display gourds she had grown and demonstrated how she decorated them. She also spoke about the Louisiana Archaeological Society Central Chapter. Special Thanks go to ROTC for hosting our event in their building & their great assistance with everything.

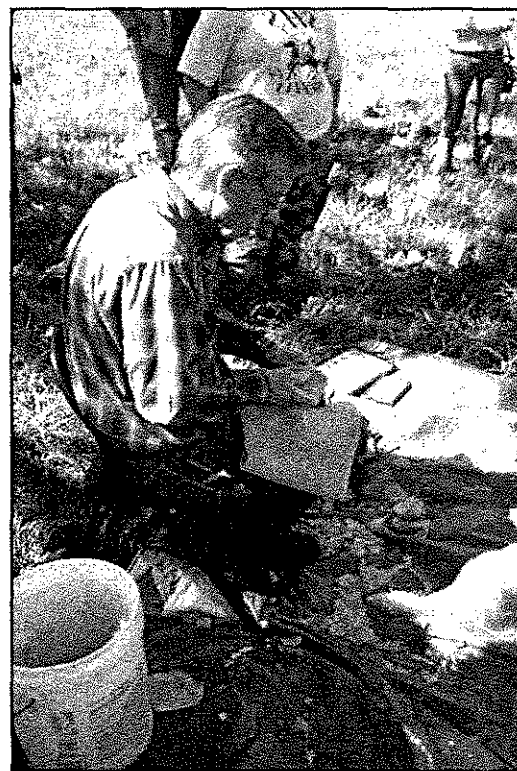
DELTA

Delta Chapter LAS has a new improved email address and home page address.

deltachapterlasARCHAEOLOGY@att.net <http://home.att.net/~deltachapterlasARCHAEOLOGY/index.html>



Baton Rouge Chapter's Lloyd Pine demonstrating a traditional bow.



Baton Rouge Chapter's Jerry Hutchinson demonstrating flintknapping techniques.

LAS MEMBERS SURVEY

This survey is being conducted as part of a study on membership among state archaeological societies.

Age

- Under 18
- 19-30
- 31-40
- 41-50
- 51-60
- over 60

Sex

- Male
- Female

Highest level of education completed

- High School
- Some college
- Associate's Degree
- Bachelor's Degree
- Graduate Degree

Profession

Number of years involved
with LAS _____

Interests

- Prehistoric Archaeology
- Historic Archaeology
- Genealogy
- History
- Culture
- Antiques

This information is completely confidential. It will be used for statistical purposes only.

Mail completed survey to:

Josetta LeBoeuf
LAS Treasurer
9364 Rainford Road
Baton Rouge, LA 70810

Or e-mail:

Josieaz@bellsouth.net

announcements and news

LAS Annual Meeting

The 31st annual meeting of the Louisiana Archaeological Society will be held in Lafayette February 11-13, 2005. The meeting announcement, a call for papers, and pre-registration forms are included in this issue. Please make sure to reserve your room early to ensure you get a spot. **When reserving your room, please make sure to say that you are with the LAS so that you can get the conference rate.**

Grant Awarded

Jenna Kuttruff has been awarded a \$10,000 Faculty Research Grant from the Council on Research at Louisiana State University in Baton Rouge. The money will be used to AMS date and analyze 10 specimens of footwear and bags from Arkansas caves and rock shelters. Some of the funds will allow Marie Standifer to spend time on the Scanning Electron Microscope in order to identify the source plants. The study will attempt to determine any changes in plant material, production techniques, artifact style, complexity, use, and performance through time. The end goal is to gain information from these artifacts that will demonstrate the knowledge, skill, and human effort required to make them and thus be an indication of the level of technology, wealth, and status of the time.

LAS Annual Meeting Silent Auction!

This year the LAS will hold a silent auction as a fundraising event. A number of items, including numerous reports on Mississippi and Lower Mississippi Valley archaeology provided by the Mississippi Department of Archives and History, and four of the CB Moore volumes recently reprinted by the University of Alabama Press (including the two reporting his 1910s work in Louisiana), have already been donated. Please consider donating something for this auction (authentic artifacts are not acceptable but replicas would be great) and bring your money to the meeting!

Items can be brought to the meeting or sent to Chip McGimsey at the Department of Sociology and Anthropology, PO Box 40198, University of Louisiana at Lafayette, Lafayette, La. 70504.

If you are intending to donate an item, please let Chip know before the meeting so that we can have the appropriate table space, bid boxes, and forms available.

Call For Papers

31st Annual Meeting of the Louisiana Archaeological Society
February 11-13, 2005
Hilton Hotel
Lafayette, Louisiana

To submit a paper for presentation, you can:

1) submit a title and abstract electronically via the LAS website; go to www.laarchaeology.org and click on 2005 Annual Meeting

2) submit a title and abstract via email to mcgimsey@louisiana.edu;

3) mail your title and abstract to:

Chip McGimsey
Department of Anthropology and Sociology
PO Box 40198
University of Louisiana at Lafayette
Lafayette, La. 70504

Presentations should be no longer than 20 minutes. A slide projector and digital projector with laptop will be available for participants use. Speakers wishing to use Powerpoint must load their presentations before the session or bring their own laptop.

Abstracts are due February 1, 2005

Name _____

Address _____

Affiliation _____

Abstract _____

31st Annual Meeting of the Louisiana Archaeological Society

February 11 – 13, 2005

**Hilton Hotel
Lafayette, Louisiana**

The 2005 Annual Meeting of the Louisiana Archaeological Society will be held at the Hilton Hotel and Conference Center in Lafayette, Louisiana on February 11, 12 and 13.

A block of 50 rooms has been held for the conference participants at a rate of \$72 for a room with two double beds and \$82 for a room with one king bed. The rooms will be held for members of the LAS until 21 January 2005. Reservations can be made by calling **1-800-445-8667**; to get the meeting room rate you must identify yourself as a member of the LAS.

The meeting will begin on Friday afternoon with various committee meetings and an evening reception. Papers will be presented Saturday with a banquet and keynote speaker on Saturday evening. A cash bar will follow the evening presentation. A variety of tours will be available on Sunday morning, including a visit to the AD 1300 Bayou Portage Guidry site and Acadian cultural attractions in Lafayette. More information will be available on the LAS website (www.laarchaeology.org) in December.

The keynote speaker will be Robert Ricklis of Coastal Environments, Inc., in Galveston, Texas. The topic of his talk will be the 2000-2001 excavations at the stratified, multicomponent Buckeye Knoll site, 41VT98, sponsored by the U.S. Army Corps of Engineers (Galveston District). Time-diagnostic artifacts found within the various strata indicate occupations spanning the late Paleo-Indian, Early, Middle and Late Archaic and Late Prehistoric periods. Two prehistoric mortuary components have been identified at Buckeye Knoll. By far the larger is an Early Archaic cemetery dating to ca. 7,000 years ago. This cemetery, one of only three large mortuary sites known for this period in all of North America, contained flexed, semi-flexed and sitting primary interments. A wide array of lithic, bone and shell artifacts were associated with the individuals buried in the cemetery.

If you have any questions or comments concerning the meeting, contact Chip McGimsey at 337-482-5198 or mcgimsey@louisiana.edu.

Pre-Registration Form

31st Annual Meeting of the Louisiana Archaeological Society

February 11-13, 2005

Hilton Hotel

Lafayette, Louisiana

You can register online at the LAS website (www.laarchaeology.org) or by sending the following information to:

Chip McGimsey
Department of Sociology and Anthropology
PO Box 40198
University of Louisiana at Lafayette
Lafayette, LA 70504

PRE-REGISTRATION DEADLINE IS FEBRUARY 4TH.

Name _____

Affiliation _____

Address _____

Telephone _____ email _____

Pre-Registration Fee: _____ @ \$25.00 per person

Student Registration Fee:
(with ID): _____ @ \$15.00 per person

On-site Registration Fee: _____ @ \$30.00 per person

Banquet _____ @ \$20.50 per person

Total _____

Please make checks payable to the Louisiana Archaeological Society

MEMBERSHIP APPLICATION AND DUES RENEWAL

For year* _____

- Regular Membership Annually \$20.00
- Associate Membership Annually \$5.00
- Life Membership \$200.00
- Sustaining Membership \$300.00
- Student Membership Annually \$12.00
- Libraries & Institutions Annually \$20.00

PLEASE PRINT OR TYPE

Name _____

Organization (optional) _____

Address _____

City _____ State _____ Zip _____

Email Address _____

Names of Associate Members _____

* All memberships are for the calendar year, January 1 through December 31. Regardless of the time of year during which you join the society, you will receive all publications for the year specified.

Back Issues of LAS Bulletins, \$15.00 each. Orders of 10 to 14 copies, \$13.50 each; orders of 15 or more copies, \$12.75 each.

- | | | |
|----------------------------------|-----------------------------------|--|
| #1 <input type="checkbox"/> 1974 | #10 <input type="checkbox"/> 1983 | #19 <input type="checkbox"/> 1992 |
| #2 — 1975 (out of print) | #11 <input type="checkbox"/> 1984 | #20 <input type="checkbox"/> 1993 |
| #3 <input type="checkbox"/> 1976 | #12 <input type="checkbox"/> 1985 | #21 <input type="checkbox"/> 1994 |
| #4 — 1977 (out of print) | #13 <input type="checkbox"/> 1986 | #22 <input type="checkbox"/> 1995 |
| #5 — 1978 (out of print) | #14 <input type="checkbox"/> 1987 | #23 <input type="checkbox"/> 1996 |
| #6 — 1979 (out of print) | #15 <input type="checkbox"/> 1988 | #24 <input type="checkbox"/> 1997 |
| #7 <input type="checkbox"/> 1980 | #16 <input type="checkbox"/> 1989 | #25 <input type="checkbox"/> 1998 (in press) |
| #8 <input type="checkbox"/> 1981 | #17 <input type="checkbox"/> 1990 | |
| #9 <input type="checkbox"/> 1982 | #18 <input type="checkbox"/> 1991 | |

Back Issues of LAS Special Publications:

- SP #1 Stone Points and Tools of Northwestern Louisiana (1981, Reprinted 2000) \$4.00
- SP #2 LAS 10th Anniversary Issue (1984) (out of print)
- SP #3 Louisiana's Archaeological Radiometric Database \$4.00

Optional Donation:

Roger T. Saucier Memorial Fund \$_____

Make checks payable to:
Louisiana Archaeological Society

Send payment to:
Josetta LeBoeuf
LAS Treasurer
9364 Rainford
Baton Rouge, LA 70810

Information for Subscribers

The *Newsletter of the Louisiana Archaeological Society* is published three times a year for the society by Coastal Environments, Inc., Baton Rouge. Subscription is by membership in the Louisiana Archaeological Society. Annual membership dues are \$20.00 for individuals, libraries, and institutions, \$5.00 for associates (relatives of individual members), and \$12.00 for students. Life membership dues are \$200.00 for individuals. Sustaining membership dues for individuals or institutions are \$300.00. In addition to the newsletter, members receive one issue per year of the bulletin *Louisiana Archaeology*. Membership requests, subscription dues, changes of address, and back issue orders should be directed to the Treasurer. Unless otherwise indicated, opinions stated herein are those of the Newsletter Editor and do not necessarily reflect society policy.

Information for Contributors

Send all notes, news, and other communications to: Cherie A. Schwab, Newsletter Editor, 7325 Meadowbrook, Ave., Baton Rouge, Louisiana 70810. If possible, articles should be submitted on computer disk or via email, preferably in Microsoft Word or Word Perfect, although most other word processing programs can be translated. Digital figures can be submitted on disk or via email in a TIFF or PICT format or in hard-copy format, if necessary. Questions regarding format should be directed to the editor (225) 767-2090, email: chereeba@cox.net. Style should conform to the guidelines published in *American Antiquity*, Vol. 57, No. 4 (Oct. 1992).

Web Site

www.laarchaeology.org

OFFICERS

President: Joe Saunders, Department of Geosciences, ULM, Monroe, Louisiana 71209. Tel. (318) 342-1899. email: president@laarchaeology.org

Vice President/President Elect: John Polk, 222 River Oaks Dr., Luling, Louisiana 70070. Tel. (985) 785-2281. email: vicepresident@laarchaeology.org

Secretary: Maureen Downey, 103 Beaupre Dr., Luling, Louisiana 70070. Tel. (504) 785-2545. email: secretary@laarchaeology.org

Treasurer: Josetta LeBoeuf, 9364 Rainford, Baton Rouge, Louisiana 70810. Tel. (225) 767-4974. email: treasurer@laarchaeology.org

Bulletin Editor: Charles McGimsey, Dept. of Sociology and Anthropology, University of Louisiana Lafayette, P.O. Box 40198, Lafayette, Louisiana 70504. Tel. (337) 482-5198. email: bulletin@laarchaeology.org

Newsletter Editor: Cherie A. Schwab, 7325 Meadowbrook Ave., Baton Rouge, Louisiana 70810. Tel. (225) 767-2090. email: newsletter@laarchaeology.org

Webmaster: Junior Doughty, 218 Major Doughty Road, Tullos, Louisiana 71479. (318) 534-6290. email: webmaster@laarchaeology.org

LOUISIANA ARCHAEOLOGICAL SOCIETY

1260 MAIN STREET
BATON ROUGE, LOUISIANA 70802

FORWARDING AND RETURN POSTAGE GUARANTEED
ADDRESS SERVICE REQUESTED

Chip McGimsey life 2004
Dept of Sociology and Anthropology
P.O. Box 40198
Lafayette, LA 70504

Nonprofit Organization
U.S. Postage
PAID
Baton Rouge, LA
Permit 1118

LOUISIANA ARCHAEOLOGICAL SOCIETY NEWSLETTER