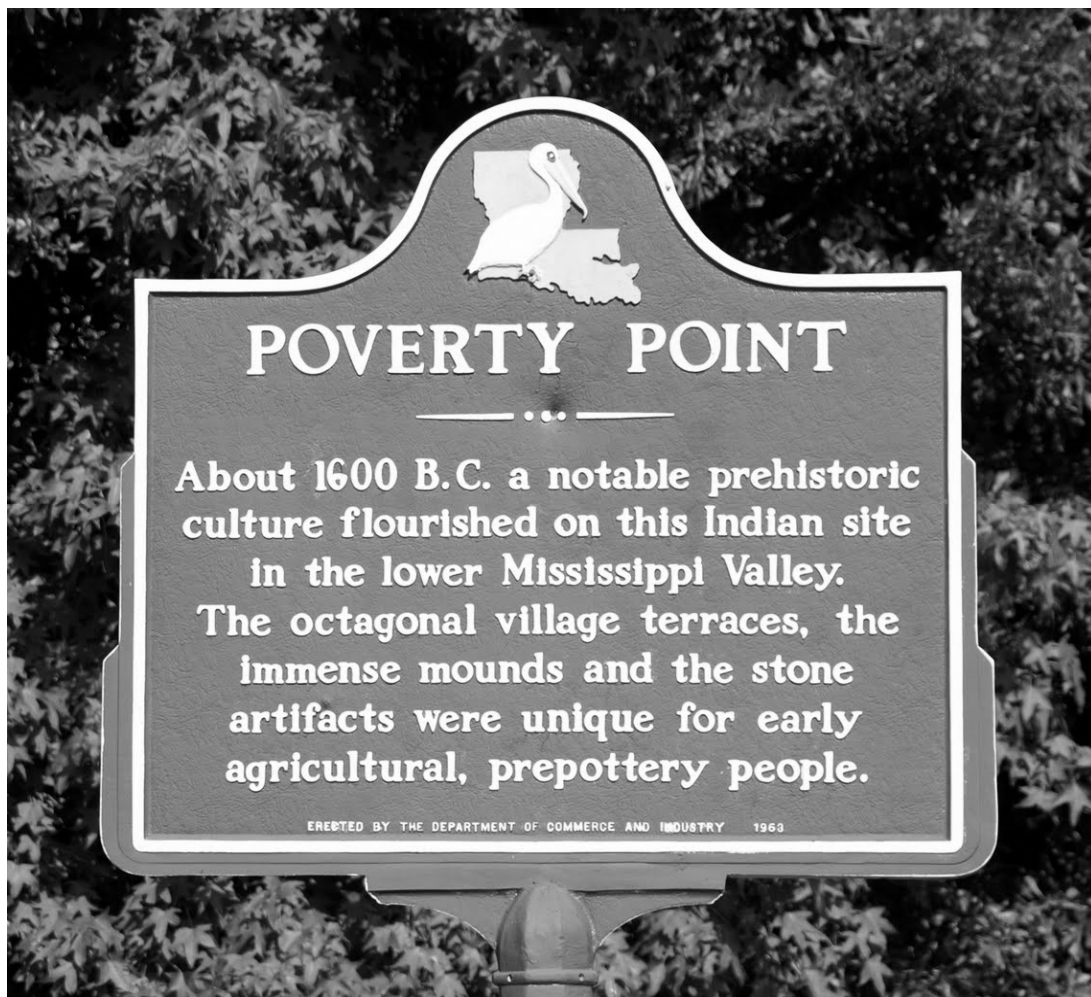




NEWSLETTER OF THE LOUISIANA ARCHAEOLOGICAL SOCIETY

Fall 2014

Vol. 42, No. 2

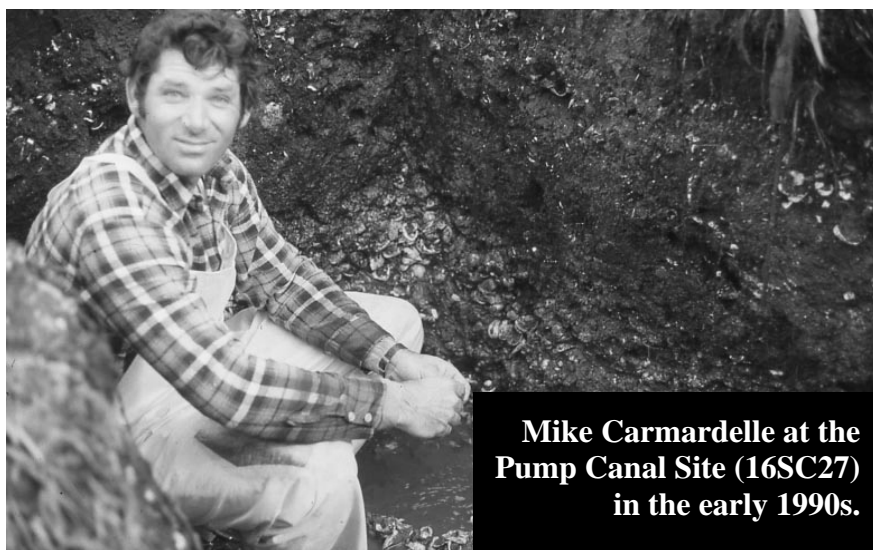


**No. 1001 on
UNESCO World Heritage List!**

LAS Newsletter printed courtesy of
R. Christopher Goodwin and Associates, Inc.
New Orleans

IN MEMORIAM

Michael John Comardelle passed away peacefully in his home surrounded by his loving family on Saturday, May 3, 2014. He was 67 years old. Beloved husband of Brenda Perez Comardelle of 48 years. Loving father of Melissa Lynn Comardelle and Pamela Rita Comardelle. Grandfather of Ian Michael Comardelle. Brother of Ray Comardelle (Sinda), Bob Comardelle (Gaynell), Susan Comardelle, Keith Comardelle, and Ronnie Comardelle (Robin). Son of Alice Falgout Comardelle Percle and the late Whitney Comardelle. Also survived by numerous nieces, nephews, cousins, and other relatives. Michael was a native of Westwego and resident of Luling for 35 years. He proudly served his country in the United States Army. He then was a commercial fisherman for more than 30 years, and later worked as an electrician at Dow Chemical. Michael was a member of the Knights of Columbus and the Louisiana Archeological Society. He was a special person who was respected by everyone that knew him, and he will be dearly missed. Interment is at St. Charles Mausoleum, Luling.-*Nola.com, May 4, 2014.*



**Mike Carmardelle at the
Pump Canal Site (16SC27)
in the early 1990s.**

Editor's Note- I first met Mike Carmadelle in the early 1980s through friends at Tulane. Mike was the consummate avocational archaeologist. He was always eager to help, advise, and befriend just about all of the professional archaeologists he ever met. I remember him saying "making money working at archaeology is like getting paid to play golf." He loved it that much!

-Dennis Jones

Hey Dennis,

Here are some of the highlights of Mike's archaeology career. Besides being the most prolific discoverer and cataloguer of sites in St. Charles Parish, he worked with me at Pump Canal (16SC27), Sims (16SC2) and the Bayou Gauche site. Also, he worked with me at Mulatto Bayou in Hancock County MS. He served as guide and site location expert during the survey of southeastern Louisiana sites conducted by NASA in 2002. He recorded the destruction of the Temple site in Lake Catahouache; he worked on Fleming, Shell Hill (?) with Brian Duhe; and many more sites whose names escape me (there was a mound site he worked with Joe Manuel north of Pontchartrain).

He worked with, interacted with, and often instructed some of the late great in regional archaeology (and some not so late) including Nietzel, Haag, Woody G., Dave Davis; Smokey Joe; Chip McGimsey; you and Malcolm Shuman; Tommy Ryan (Corps of Engineers); Beavers; David Jeanne, Pete Gregory, Rich Weinstein, Ian Brown; Jon Gibson; Ben Treadway; Dr. Webb, Roger Kennedy when he was at NPS; Herschel Franks; Jill Yakubik etc. He assisted Rebecca Saunders and her students to access and test the Bayou Grand Cheniere site. He was the preferred guide and teacher for all Tulane archaeology students, including T. R. Kidder. In fact, I'm not sure there was a site in any of the southeastern parishes that was not discovered, recorded, investigated and/or excavated by Carmadelle. He was a fixture at the annual LAS meetings for years and I believe he might have presented at a few.

Thanks for giving me the chance to let others know how much Mike had done. He truly loved Louisiana archaeology. I'll miss him and so will archaeologists throughout Louisiana.

-Marco Giardino

LAS CHAPTER & MEMBERSHIP NEWS

LOUISIANA CULTURAL AWARDS 2014 WINNERS HONORED APRIL 22

A number of Louisiana's arts community members and organizations were honored when Lt. Gov. Jay Dardenne presented the annual Louisiana Culture Awards. The nearly 20 honorees will officially accept the awards April 22 during a dinner that caps off two days of the state's Office of Cultural Development "Culture Connections," a series of networking, legislative visits and educational events.

The 2014 Cultural Award winners:

- **Cultural District Award:** Downtown Lafayette Cultural District
- **Arts Education Award:** Henry Price in Shreveport
- **Arts Leadership Award:** Kris Cangelosi in Baton Rouge
- **Culinary Arts Award:** Reconcile New Orleans
- **Outstanding Arts Organization:** McNeese Banners Cultural Series in Lake Charles
- **Artist of the Year:** Wayne Amedee in New Orleans
- **Folklife Heritage Award:** Goldman Thibodeaux in Opelousas
- **Archaeologist of the Year:** R. Christopher Goodwin & Associates in New Orleans
- **Main Street Award:** St. Claude Main Street in New Orleans
- **Preservation Education Award:** J. Randolph Harelson in New Roads
- **Preservation Leadership Award:** A.C. Bourdier in Lake Charles
- **Preservation Heritage Award:** Preservation Resource Center of New Orleans
- **Preservationist of the Year:** Jean Sayres in Shreveport
- **Le Prix de la Franco-Responsabilité:** Sen. Eric LaFleur in Ville Platte
- **Lt. Governor's Passion for Culture Award:** Sandi Kallenberg in Shreveport
- **Lt. Governor's Passion for Culture Award:** Kathe Hambrick in Donaldsonville
- **George Rodrigue Lifetime Cultural Achievement Award:** Sue Turner in Baton Rouge



Dr. George Riser (left) representing the Louisiana Archaeological Survey and Antiquities Commission and Lt. Gov. Jay Dardenne (right) present the "Archaeologist of the Year" award to Dr. Christopher Goodwin of R. Christopher Goodwin and Associates, Inc. of New Orleans.

West Central Chapter - submitted by Johnny Guy

The West Central Archaeology Club has been very active this year. We are meeting the 4th Monday of each month at the Vernon Parish Library at 6 PM. Recent speakers have included Scott Wehner discussed the Possibility of the Clovis Comet, Mark Richard talked about the alignments of mounds at prehistoric site in Louisiana, Tim Phillips discussed artifact identification and Brad Lafitte talked about the findings on the new land purchases for Fort Polk.

The investigations at the Smart House Plantation are on-going. Screening of the dirt pile from land clearing is still on track with over a thousand artifacts found thus far. We are planning a presentation on the project for the LAS Annual Meeting in Leesville in February. Club members are also going to take a field trip to Poverty Point with the UPPA (Friends of Poverty Point) Group on September 5-7. 2014.

Baton Rouge Chapter - submitted by Julie Doucet

The BRLAS meets the last Wednesday of every month except Nov. and Dec. Lectures for 2014 are:

February – Jason Brooks, PhD candidate, LSU Geography and Anthropology, on *Intersection of Space and Labor in the Plantation Quarters Area*

March 26, 2014 – Nancy Hawkins, Division of Archaeology Poverty Point Nomination to the UNESCO World Heritage List.

April 30, 2014 - Jessica Schexnayder, LSU Sea Grant, on *Mapping South Louisiana Cemeteries*

May 28, 2014 - Megan Kenny and Barry Gordon, LSU Geography and Anthropology, Belize Field School Project

June 25, 2014 - Margeaux Murray, LSU Geography and Anthropology, work at a site in Samanco, Peru

July 30, 2014 – Beverly Clement, LSU Geography and Anthropology, on *Early Horizon Plant Use and Diet at Caylan (Peru) as seen through the Analysis of Macrobotanical Remains and Human Feces*

August 27, 2014 – Jimmy Johnson, Renaissance Man. The Viking Ships of Oslo featuring the Oseberg Viking Ship Burial.

September 24, 2014 – Nicolas Kariouk, MA Anthropology, *Light, Blight, and Sight: The German Occupation of Paris (1940-44) as seen through the Eyes of a Child.*

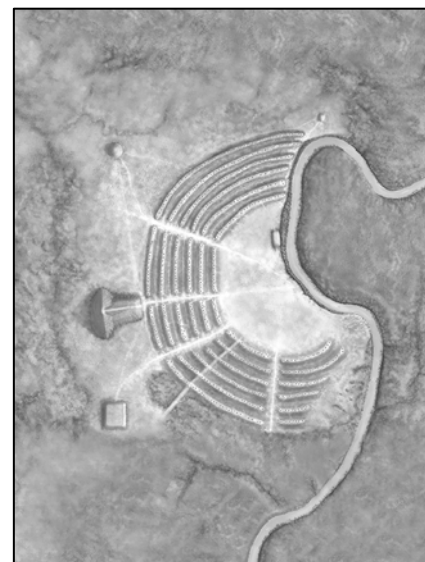
October 29, 2014 Louisiana Archaeology Month – Amanda Evans, Senior Scientist at Tesla Offshore LLC, *Archaeological Analysis of Submerged Sites on the Gulf of Mexico Continental Shelf.*



OCTOBER 2014 LOUISIANA ARCHAEOLOGY MONTH

Go to
<http://www.crt.state.la.us/cultural-development/archaeology> and click on
Archaeology Month tab
to see the schedule of events.

If any LAS members or affiliated organizations have events or activities planned for Louisiana Archaeology Month 2014, please fill out the online form to have it placed on the schedule.



Poverty Point Update: the “Darling” of Doha

By Diana Greenlee

Through the efforts of Nancy Hawkins and Dennis Jones, the *LAS Newsletter* has done a nice job of keeping LAS members informed about progress toward UNESCO (United Nations Educational, Scientific and Cultural Organization) World Heritage status for Poverty Point. I am happy to report that this is the final installment in that saga.

The Poverty Point nomination was submitted to the World Heritage Centre in January 2013. We hosted an expert mission from the International Council on Monuments and Sites (ICOMOS), the advisory body to the World Heritage Committee, to examine the site in September 2013.

In April 2014, we received ICOMOS’s evaluation. Their recommendation was that the World Heritage Committee should defer our nomination; that is, they should send it back to us for significant additional work. Afterwards, we could resubmit it and they would send another expert mission to re-evaluate the site prior to consideration for inscription as a World Heritage site.

The evaluation confirmed that Poverty Point had “outstanding universal value” and had met the standards for integrity, authenticity, management and protection. However, it also stated concerns about the safety and intrusiveness of Highway 577 through the site and about our ability to protect the setting outside the park boundaries from industrial development. Although we were able to correct some of the errors and faulty premises in the evaluation document, we realized that it would be important to provide members of the World Heritage Committee an accurate understanding of the site’s situation.

The World Heritage Committee meeting is hosted each summer by a different country, and this year it was held in Doha, Qatar. Qatar is a small Middle Eastern country on a peninsula that juts out into the Persian Gulf. Because of its extensive oil and natural gas reserves, it is a wealthy country that has undergone considerable development in recent years. Construction is ongoing as Qatar prepares to host the 2022 FIFA World Cup soccer games.

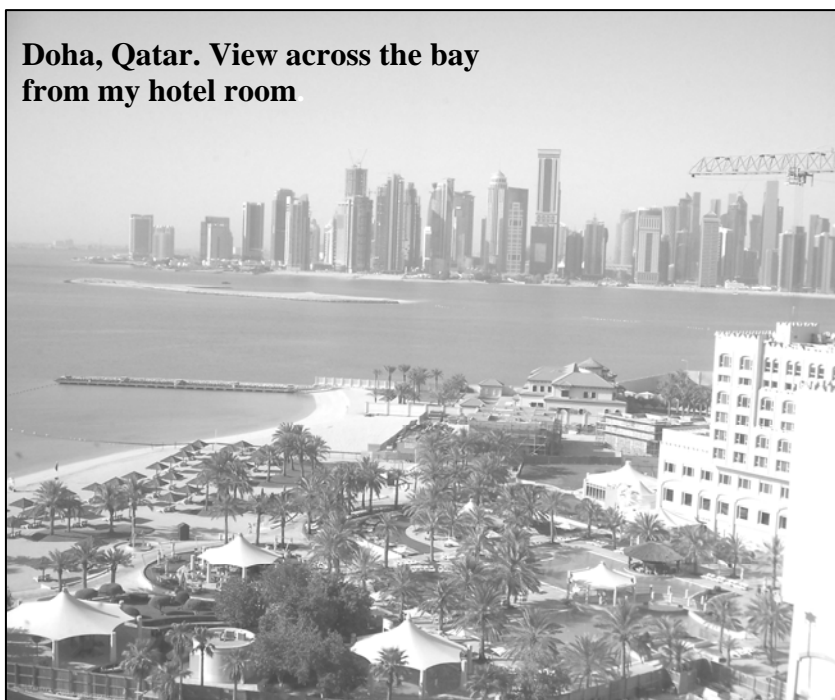
The World Heritage meeting lasted from June 15th through the 25th at the Qatar National Convention Centre. Deliberation over World Heritage nominations is typically one of the last of several tasks undertaken by the World Heritage Committee and Poverty Point was likely to be considered on Sunday, June 22nd.

I did not need to attend the entire meeting, but I wanted to be there early enough to have an opportunity to meet with the cultural properties experts from the delegations of the twenty-one members of the World Heritage Committee.

The member countries on the Committee this year were: Algeria, Colombia, Croatia, Finland, Germany, India, Jamaica, Japan, Kazakhstan, Lebanon, Malaysia, Peru, Philippines, Poland, Portugal, Qatar, Republic of Korea, Senegal, Serbia, Turkey and Viet Nam.

On June 16, 2014, I hopped a plane and headed from Monroe to Houston to Frankfurt (Germany) to Doha to attend the World Heritage Committee meeting. After a 20.5 hour trip, I arrived in Doha to join the other six members of the official U.S. delegation. Rachel Jacobson (Principal Deputy Assistant Secretary of Fish,

Doha, Qatar. View across the bay from my hotel room



Continued from previous page

The U.S. delegation to the World Heritage Committee meeting in Doha, Qatar. Front row, l-r: Pam Breaux, Rachel Jacobson, Diana Greenlee, and Phyllis Ellin; back row, left to right: Scott Turner, Arthur Chen and Stephen Morris.
Photo courtesy of Amanda Hicks



Wildlife and Parks) headed the delegation, Stephen Morris (Chief, National Park Service Office of International Affairs) and Phyllis Ellin (Historian, National Park Service Office of International Affairs) represented the U.S. Department of the Interior. Amanda Hicks (Culture Communication and Information Officer, Office of UNESCO Affairs) and Scott Turner (Political Officer, U.S. Mission to UNESCO) represented the U.S. Department of State. Pam Breaux (SHPO, LA Dept. Of Culture, Recreation and Tourism) and I represented Louisiana.

Since receiving the advisory body's recommendation, we strategized about how to clarify the issues for the Committee. We developed packets of information about Poverty Point for each of the delegations on the World Heritage Committee. We met face-to-face with the cultural properties experts of the delegations on the Committee. Our goal was to answer any questions they might have about the site or the ICOMOS recommendation, not to lobby or persuade them to inscribe Poverty Point.

As we got closer to the time that Poverty Point's nomination was to be considered, it was becoming increasingly likely that Poverty Point could be the 1000th site added to the World Heritage List. Such a symbolic number might be used to shed light on imbalances in the List and so we allowed an under-represented property, the Okavango Delta (Botswana), a natural site in Africa, to be considered before us. It became the 1000th World Heritage site. It was fun to watch them celebrate, and that simple gesture generated a lot of goodwill among meeting participants.

Poverty Point was considered next. ICOMOS described the site and presented their recommendation for deferral, which is the default position of the Committee unless a member proposes an amendment that states otherwise. Committee members then began voicing their opinions of the site, asking questions of us and/or ICOMOS, and declaring their positions as to how the

nomination should be decided. Algeria forwarded an amendment for inscription, which was supported by nineteen of the twenty-one Committee members. Rachel Jacobson, the head of our delegation, made a brief, compelling statement that addressed the issues that had been raised by ICOMOS. A consensus was eventually reached that Poverty Point should be inscribed as the 1001st property on the World Heritage List. Anybody interested in viewing the proceedings can watch the video on the World Heritage Centre's website: <http://whc.unesco.org/en/sessions/38com>. Simply select the June 22nd proceedings and scroll down to Item 8B.39 – USA.

What an emotional moment! After seven years of dreaming and working toward this goal, we had done it. We celebrated in Qatar that evening, as did our colleagues back home. On Saturday, October 11th, we will all celebrate again, this time at Poverty Point World Heritage Site. Mark your calendars and watch for updates as we work out the details on this party celebrating the site's inscription on the UNESCO World Heritage List.



A “friendly” camel at the Sheikh Faisal bin Qassim Al Thani Museum. This was as close as we got to any camels because of their association with the Middle East Respiratory Syndrome (MERS).

RESEARCH NEWS**FEATURED PROJECT - DIVISION OF PRESERVATION AND ACCESS
NATIONAL ENDOWMENT FOR THE HUMANITIES (NEH)
POVERTY POINT: PRESERVATION OF A PREHISTORIC WORLD HERITAGE SITE****August 7, 2014 | By Ralph Canevali, www.neh.gov**

The Poverty Point State Historic Site, located in northeastern Louisiana, was recently named by the United Nations Educational, Scientific and Cultural Organization (UNESCO) to its World Heritage List. This is a list of the world's cultural and natural treasures, properties which are of outstanding value to humanity. Poverty Point is only the 22nd World Heritage site in the United States.

Station Archaeologist Diana M. Greenlee, who is a member of the adjunct faculty at the University of Louisiana at Monroe, notes that Poverty Point was part of a larger cultural complex of mound builders that extended throughout the lower Mississippi River valley. Despite excavations that have uncovered stone tools, pottery, and other artifacts at Poverty Point, relatively little is known about the people who built the mounds. They were not farmers, but rather subsisted through hunting, gathering, and fishing. However, they also obtained goods from as far afield as the southern Appalachians and the upper Midwest.

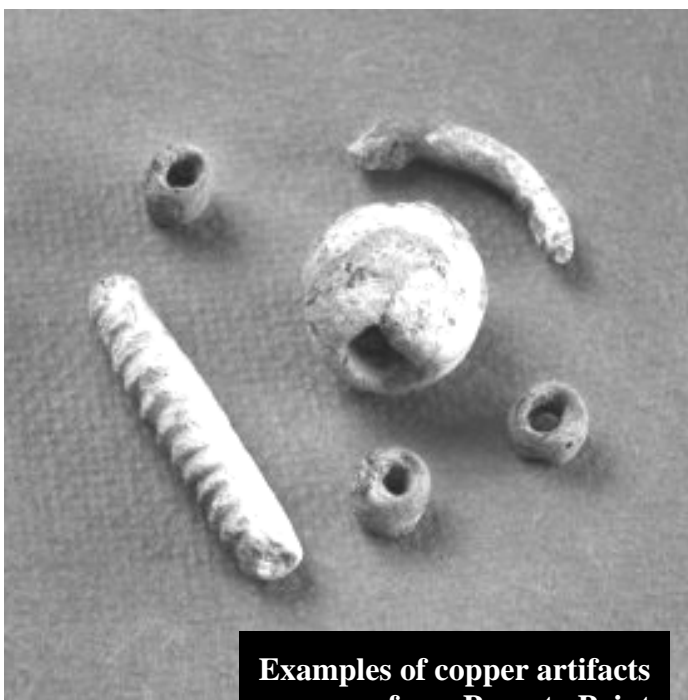
Nearly 200 objects, including beads, pendants, needles, and thin sheets, of copper, long thought to have come from the upper Midwest, have been found

at Poverty Point. In 2011-2012, Dr. Greenlee directed a project at Poverty Point supported through a NEH Preservation Assistance Grant. Its goal was to ensure the preservation of these fragile copper artifacts—part of a much larger collection that includes hundreds of thousands of items, mostly made of stone and fired clay. Some 2,000 artifacts are currently on display at a museum at Poverty Point. The remainder is stored in an archaeological curatorial facility where they are available for research or exhibition.

The NEH Preservation Assistance Grant supported visits to Poverty Point by an objects conservator who assessed the current condition of the copper items. The artifacts were photographed and X-rays taken—the latter through an X-ray machine, access to which was donated by a local dentist—to determine their structural integrity. The project team then devised a plan to clean, stabilize, and rehouse the objects in sealed, dry, supportive, micro-climate enclosures. Preserving prehistoric materials in the hot, humid Louisiana climate is a formidable challenge and requires the careful monitoring of environmental conditions in the museum. In the course of the NEH project, the museum acquired data loggers—small devices which automatically measure and record temperature and relative humidity in the museum's gallery and exhibition areas.

Because of the condition assessments, it is clear which copper artifacts are sufficiently robust to withstand different levels of analysis. Greenlee collaborated with Drs. Mark Hill (Ball State University) and Hector Neff (California State University, Long Beach) on nondestructive elemental analysis of a small sample of the most stable copper artifacts. They concluded that the composition of these objects is not consistent with the long-held assumption that they were made of copper from the Lake Superior region. Further analyses are planned to include more geological sources and additional Poverty Point artifacts. The condition assessments made possible by the NEH Preservation Assistance Grant will play a key role in selecting which artifacts to include in the future research.

Support for this project was awarded through Preservation Assistance Grants for Smaller Institutions from NEH's Division of Preservation and Access.



**Examples of copper artifacts
from Poverty Point**

UNO FIELD SCHOOL IN HISTORICAL ARCHAEOLOGY, SUMMER 2014

By D. Ryan Gray, PhD, RPA

Assistant Professor, University of New Orleans

This summer, students in the University of New Orleans 2014 field school in archaeology worked on a number of projects around the city. Directed by Dr. Ryan Gray from UNO's Department of Anthropology, the field school focuses on urban historical archaeology, looking at sites in New Orleans connected to its intertwined histories of racialization and segregation.

For the past 3 years, this has included sites connected to Storyville, the city's experiment with creating a semi-legal red light district from 1898 to 1917. While relatively short in duration, Storyville has loomed large in the city's imagination of its past, where it has especially been linked to the birth of New Orleans jazz. Today, numerous businesses use the 'Storyville' name to imply a connection to the city's musical history and to its bawdy reputation, often with little awareness of the daily lives of the people who actually lived and worked in the District. Ironically, despite its notoriety, the aboveground traces of the District were almost obliterated by later development, particularly by the ca. 1940 Iberville Housing Project. While some excellent historical research on Storyville has begun to emerge, the archaeological record provides a way to examine the development of the District, especially the unique intersections of gender, race, class, and ethnicity within it, in this under-studied section of the city.

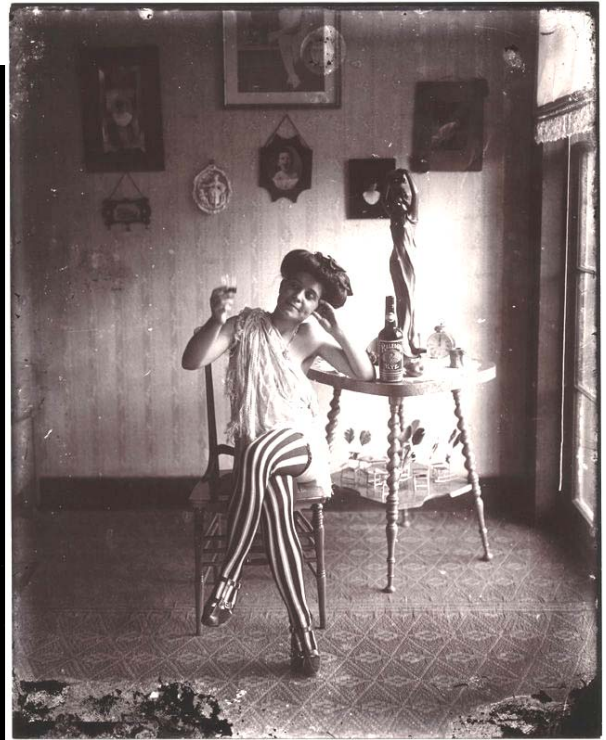
In 2014, students continued excavations at City Square 130, the block historically bounded by Bienville, N. Liberty, Conti, and N. Crozat Streets. The most significant find of the 2014 season was a privy associated with a residence on N. Liberty Street. This small frame double was listed in the 1880 Census as a 'House of Ill Fame', so it offers an opportunity to study the origins of the red light district in the years preceding its official designation.

The privy was apparently filled following a fire in the 1890s, and many of the artifacts demonstrate a clear link with the use of the structure as a brothel. Among the artifacts recovered are lead syringes used for administering mercury as treatment for syphilis, along with numerous glass containers and ceramic vessels. Perhaps the most dramatic find was a bisque (unglazed porcelain) hand on a base. While this may have been used as a holder for rings, it appears to have originally held a flower. It thus may have simply served as an ornament for a mantelpiece, intended to suggest elegance and refinement.

On the other hand, a glass goblet base, scratched with the initials "M.C." suggests the gritty reality of life in a 'house of ill fame', where multiple women living in close proximity needed to hold on to individual possessions, even things that would have been cheaply available locally.



UNO field school students hard at work in what was once the Storyville District of New Orleans



Above: An early 20th century photograph of one of the residents of the Storyville District in New Orleans.



Left: Some of the artifacts recovered during the UNO field school this summer in the Storyville District.

Students worked on two other small projects during the summer. At a site on St. Peter Street in the Vieux Carré, students excavated in the interior of a nineteenth century servants' quarters and kitchen building, where the removal of a modern slab had exposed historic remains. These remains included the location of a privy shaft that had been filled in the mid-nineteenth century. An immense collection of artifacts was recovered from the privy, including hundreds of elements from goat skulls. The remains may be associated with the residence of a midwife at the site, but research on this site is just getting started.

Students also were able to learn about site survey at the site of the Temple of the Innocent Blood, in the modern Lower Ninth Ward. The Temple of the Innocent Blood was founded by Spiritual church leader Mother Catherine Seal in the 1920s. Mother Catherine built both a church and her 'Manger' there, and encouraged her congregation to move to and settle in the area,

which was then on the very fringes of the city. The location was probably chosen for this very reason, as Mother Catherine's congregation was interracial, in the very period when the city was becoming increasingly intolerant of sociality across the color line. With permission from the New Orleans Redevelopment Authority, students excavated shovel tests on two city lots to try to identify remains from the Temple. Although no architectural remnants of the Temple were identified this year, a small but interesting collection of artifacts dating to the period when the Temple was closed was recovered. An article detailing some of Dr. Gray's previous work at the site should be out soon in the journal *AP3A (Archaeological Papers of the American Anthropological Association)*.

Anyone interested in participating in upcoming field schools or in volunteering in UNO's archaeology lab is invited to contact Dr. Ryan Gray at drgray1@uno.edu.

DISCOIDALS FROM CENTRAL LOUISIANA

James Fogleman-LAS Foreign Correspondent

Discoidals or Chunky Stones are stone discs used by Native Americans to play the game of Chunkey. They came into use about A.D. 700 and lasted until historic times. The game centered on rolling as far as possible a disc which was usually shaped from stone. When the “pitcher” released the stone, the competitors would throw a stick or spear or shoot an arrow where they thought it would stop. The one closest won. The game may also have served a political function. (Odell, 1998).

My first introduction to discoidals was when I noticed one [Figure 1, A] eroding out of a cattle trail through Mound D at Stelly Mounds (16SL1). While I was unfamiliar with that artifact type, it was obviously an intentionally modified stone. In those ancient pre internet days, I had to wait months before I could find someone who could tell me it was a discoidal. It is labeled 16-SL-7 in my collection, which was the old USL site number.

Discoidal A is made of well consolidated, fine grained grayish-brown sandstone. It is polished and has a slightly raised lip on both sides of about a half cm. in width. One side is slightly better executed than the other. The less well made side has an indentation just off center that appears to be a blemish in the rock rather than an intentional creation. The central area is flat and about 0.1 to 0.2 cm. lower than the lip. Later, I recovered a second, almost identical specimen from the same mound (Figure 1, B). Object B is also light grayish brown polished sandstone that is somewhat coarser grained. The raised lip on Discoidal B is well defined on both sides extending back about 0.5 cm. It also has some minor ‘tractor trauma’. (*To non-country boys and girls this means farm equipment has left its mark*). The ‘tread’ side of both objects are slightly convex. As with Discoidal A, the sandstone is well consolidated and is in no way friable. Discoidals A and B fit into the Cahokia style based on its design, which in no way indicates or implies that they were made in Cahokia. Table 1 contains more information on physical characteristics of all objects discussed

TABLE 1: Physical Attributes of Discoidals and Related artifacts.

Item	Location	Diameter	Thickness	Weight	Material	Type
Discoidal	cm. [inches]	cm. [inches]	cm. [inches]	gr. [lb.]		
A	Stelly Md. D	7.0 cm [2.8"]	2.6 cm [1"]	240 g [0.53 lb.]	Brown sandstone	Cahokia
B	Stelly Md. D	7.4 cm [2.9"]	2.6 cm [1"]	249 g [0.55 lb.]	Brown sandstone	Cahokia
C	Brenda	11.7 cm [4.6"]	4.2 cm [1.7"]	1,207 g [2.66 lb.]	Brown sandstone	Biscuit
D	Normand Md.	8.0 cm [3.1"]	4.0 - 4.4 [1.6-1.7"]	449 g [0.99 lb.]	Brown sandstone	Biscuit
E	Wash. B.C.	4.7 cm [1.9"]	1.2 - 1.7 [0.5-0.7"]	77 g [0.17 lb.]	Chert?	Biscuit
F	Checkstamp	4.5 - 5.0 cm [1.8 - 2"]		132 g [0.29 lb.]	Gray sandstone	‘Ball’
G	Batiste	3.5 - 4 cm cm/side [1.4 - 1.6"]		86 g [0.19 lb.]	Brown sandstone	‘Cube’

Rabalais Discoidal

Later while visiting my uncle, the late Mr. Leo Rabalais, to see about access to his fishing pond, we discussed Native American artifacts. He mentioned that he and his son Tommy farmed the land on the opposite bank of Petite Prairie near the Stelly site. During one planting season, they found a large round stone there (Figure 2 C). Discoidal C has a light polish on most of the surface and a moderate amount of tractor trauma. This artifact is also constructed from a fine-grained, well consolidated sandstone. It is a light brown color and closely resembles the stone used to make Discoidal A. The top and bottom of the Rabalais discoidal are slightly incurved. The ‘tread’ is essentially flat with a beveled edge. A large crack transits across one face crosses the tread before disappearing on the opposite side. The crack most likely predates its modification into a gaming piece. The shape fits it into the ‘biscuit’ variety of discoidals. The location described was the opposite side of and a few hundred meters downstream on Petite Prairie where the bayou makes a sharp turn. The Brenda site (*no site #yet, I have to get busy and do the right thing*) is near this location.

Figure 1: Cahokia style discoidals from Stelly Mounds site (16SL1)

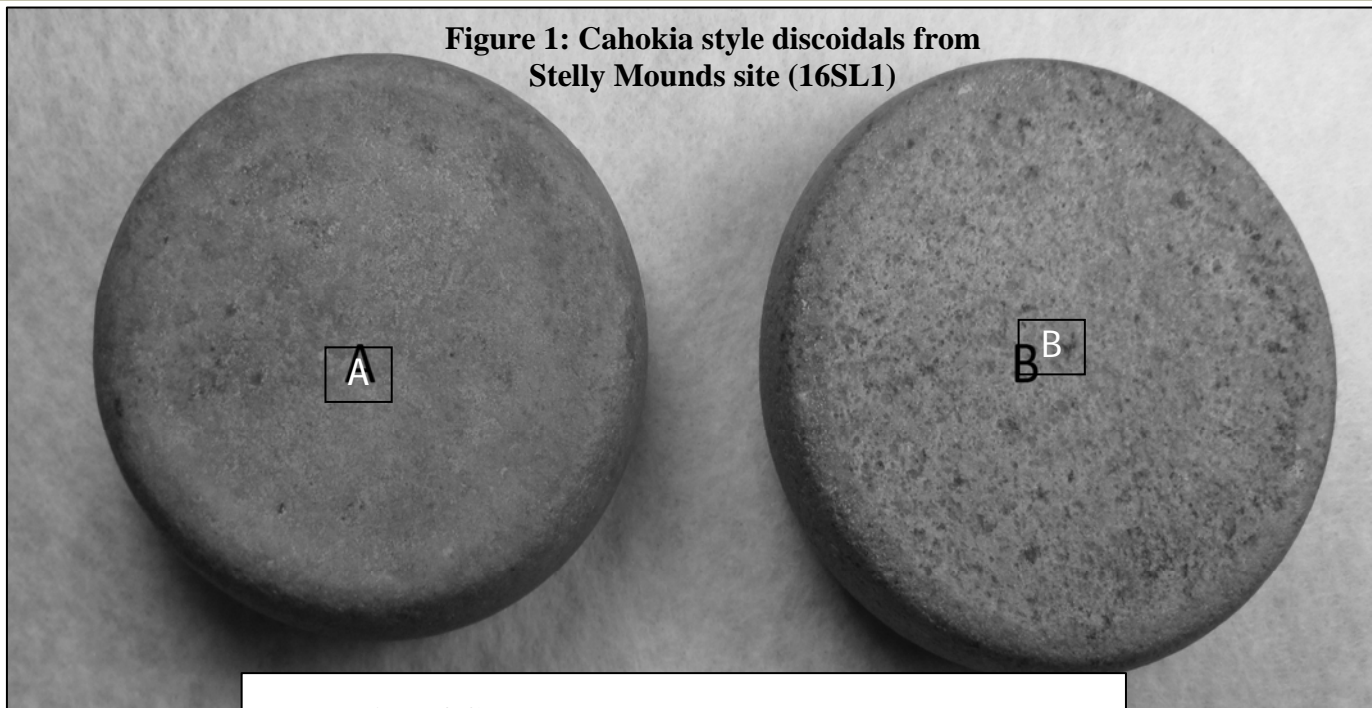
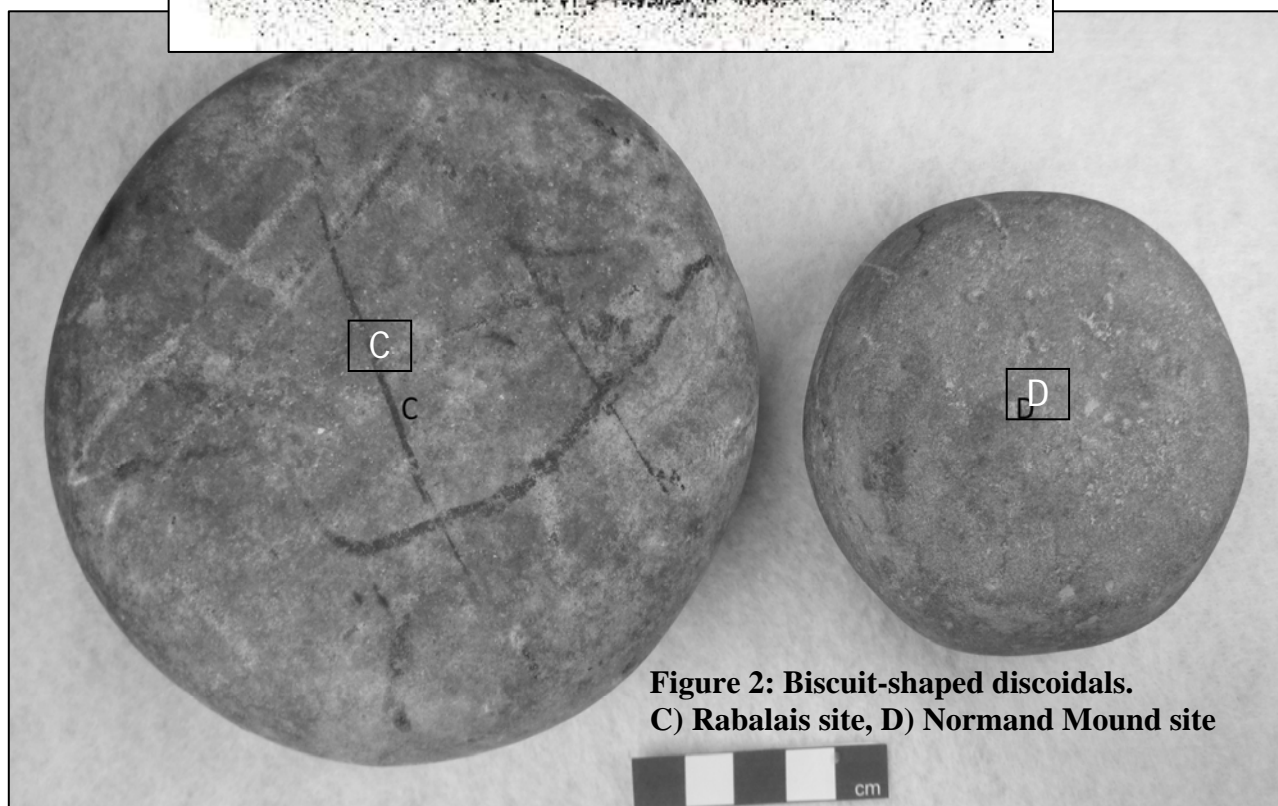
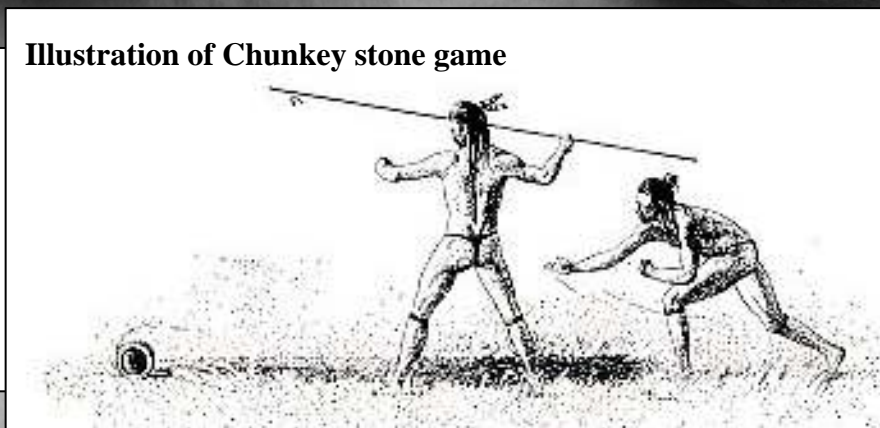


Illustration of Chunkey stone game



**Figure 2: Biscuit-shaped discoidals.
C) Rabalais site, D) Normand Mound site**

Continued from previous page

Washington, B.C. Discoidal

In St. Landry Parish, Washington, B.C. means Washington, Bayou Courtableu, in order to distinguish it from our nation's capital. Washington, B.C is famous for its antebellum buildings and infamous for its notorious speed trap. During the construction of I-49 access to the town of Washington, I decided to observe the historic site destruction that was taking place there. During the visit, the remains of several historic architectural ruins (e.g. 16SL151) were noted. At the edge of the construction zone, a small round object which resembled an old ceramic door knob was exposed. It turned out to be a discoidal (Figure 3 E). Discoidal E has no raised lip and the central area is essentially flat. It is somewhat asymmetrical with one side being ½ cm. thicker than the other. The object may be a modified chert cobble. It is red in color with some gray and black. The 'tread' is rounded and shows lots of pecking with one small area of cortex. Overall Discoidal E is heavily polished although several flake scars are still in evidence. While E may fit into the biscuit category, it is a different type of stone, very distinct from C and D being far smaller, more lopsided.

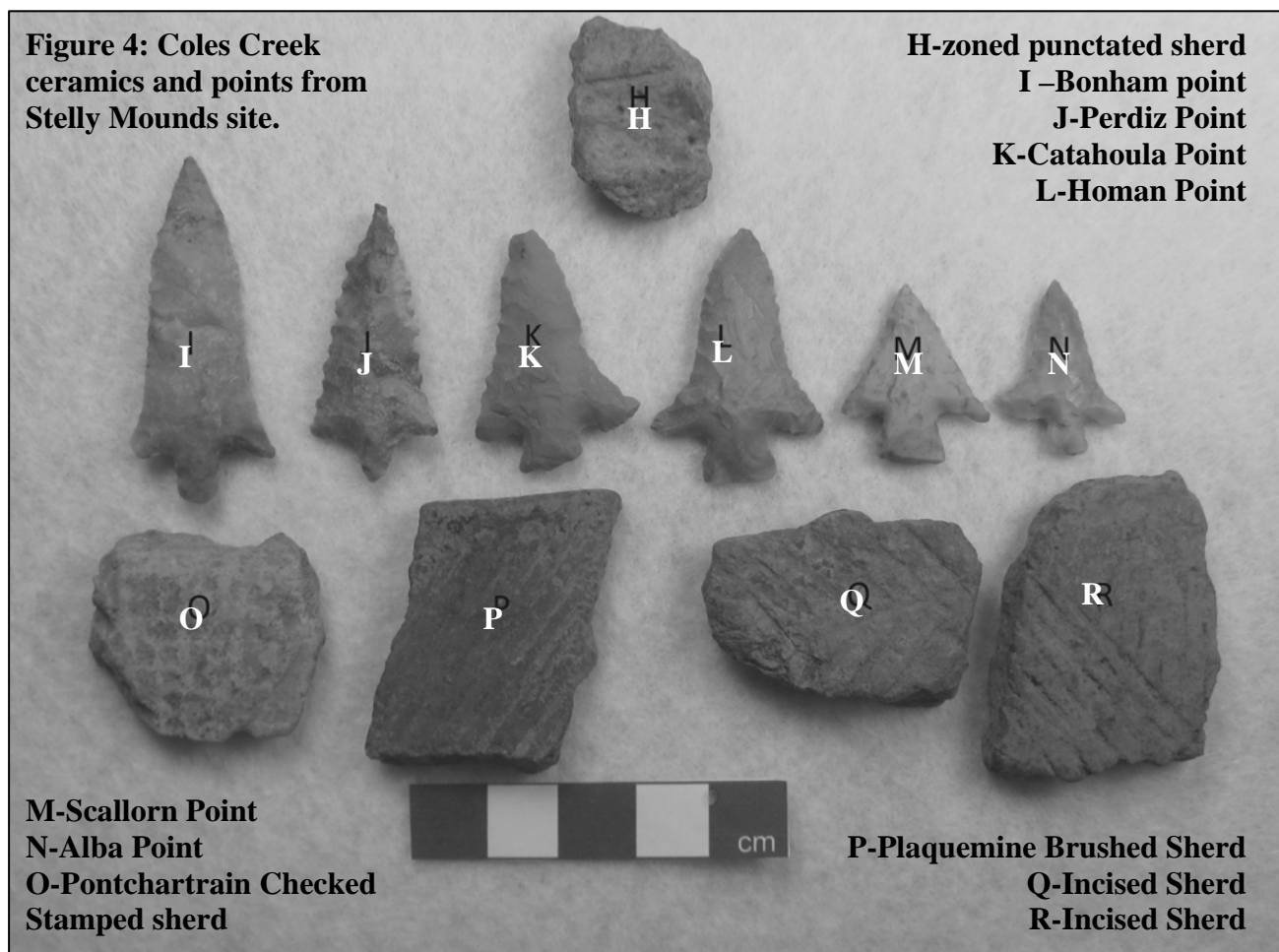
Stone 'Ball' and Stone 'Cube'

An artifact resembling a crude stone sphere/ball (Figure 3 F) was recovered at the Checkstamp site [16SL129] which is located about 15 kilometers downstream on Petite Prairie from the Stelly site. The 'ball' is rougher than the discoidals, but parts have been polished. While it does not roll as well as the true discoidals, in field tests, it rolls much better than an unmodified stone. It has a circumference of approximately 16 cm. [6.25"] and a diameter of about 5 cm. [2"]. E could be a discoidal in the early stage of manufacture, but it would have resulted in a very small one. The sandstone 'cube' is about 3 cm on each side. While its corners are rounded, it rolls like a die stopping with a face up and a face down. One set of opposing sides are somewhat round so they are less likely to stop in the up/down position than the other two sets of opposing sides. The 'cube' is also of fine grained sandstone with limited polish. It was recovered from the Baptiste site (16AV25). The 'Ball' and the 'Cube' are included here because the material used in their creation is very similar to the stone used for all of the discoidals except E. Their function remains a mystery.



Dating the artifacts

While the Stelly site is noteworthy for its Middle Archaic mounds, it also has a significant Coles Creek/Plaquemine component. Artifacts from this period are most common in an area bounded by Bayou Petite Prairie and Mounds B and D. A small black stain midden was once visible between Mound D and the bayou. Aboriginal ceramics are somewhat common and include Pontchartrain Checkstamp [n = 3] and Plaquemine Brushed sherds [n = 4]. There are a significant number of arrow points [n = 24] including Alba, Catahoula, Colbert, Homan, and Perdiz. [Russo, 1994]. All of the lithics are of local stone. [Fig. 4].



The Rabalais discoidal was found near the Brenda site, which is a scatter of badly weathered non-diagnostic sherds, debitage, and the blade half of a celt. Its proximity to 16SL1 could suggest it was part of that site or at least associated with it. The Normand Mound in Avoyelles Parish (Figure 2D) has everything from Late Paleo to Early Historic artifacts associated with it. The Washington discoidal was found with only a few prehistoric plain sherds so the data are too limited to speculate on a date. The 'ball' comes from a rich site consisting of only Coles Creek/Plaquemine artifacts. The 'cube' is from the Baptiste site, which has Late Paleo to Early Historic components also, but with a strong Plaquemine presence. Therefore assigning most of the artifacts, to the Coles Creek/Plaquemine era seems entirely justified.

Stelly cluster

Three of the five discoidals from central Louisiana were found at or near the Stelly Mounds making it the apparent center for the chunky game. This mound group would have been easily identified by locals as an artificial structure and would have been the largest such site in the area until the construction of the comparable sized Bayou Rouge mounds [16 SL 3] nearly 4000 years later. One can imagine it would have been an especially auspicious place for playing chunky. The high and well drained

Continue from previous page

surface of the Stelly mounds would have made an ideal arena for the chunky game. The possible plaza area among the main mounds is over 200,000 sq. ft. or about 5 acres. (Jones and Shuman, 1991:29) and would have formed a nice playing field with observable boundaries and a viewing area.

The game was a serious event as evidenced by “they sometimes bet all they have on it, in former times even their wives and children” [DeBoer, 1993]. I quote DeBoer, who quoted Culin, who quoted Reagan. This quote is now four times removed from its original source, which may be a record, but it illustrates the significance of the game in a way that deserves quoting. One can almost imagine the wife telling her man that “since you are going to the chunky games, take the only the worst of the pots so that if you lose them it’s no big deal.” This may explain the poor grade of ceramics at the Stelly site! The wife may have continued, “Remember last year when you gambled away my mother. In fact, some people claim that you *deliberately* lost that match.”

Summary

While discoidals are a somewhat uncommon artifact in Louisiana, they have been reported from Caddoan sites such as Gahagan (16RR1) (Emerson, 2004) and Plaquemine sites such as Medora (16WBR1) (Quimby 1951: 105). In his chapter on the Plaquemine culture, Neuman (1984:270) shows two discoidals without provenience. Interestingly, as in my study area, the biscuit form discoidals are larger and the Cahokia forms are smaller. The two from the Stelly site are good examples of Cahokia type discoidals, while the other three represent forms similar to the biscuit type. The Washington artifact is the least symmetrical and is the only one not fashioned from fine grained, well consolidated sandstone. The ‘ball’ and ‘cube’ are included due to their unusual shape and the similarity of their construction material to that of all but one of the discoidals. Where it is possible to get a relative date, the best fit for discoidals in central Louisiana is Coles Creek/Plaquemine. This would put them within the accepted timeline of discoidals in the rest of Louisiana and the eastern United States. It seems, therefore, that discoidals can serve as a diagnostic artifact for the Coles Creek/Plaquemine periods in the Lower Mississippi Valley.

References Cited

- DeBoer, Warren R.
1993 Like a Rolling Stone: The Chunkey Game and Political Organization in Eastern North America. *Southeastern Archaeological* 12:83-90.
- Emerson, Thomas E. and Jeffrey S. Girard
2004 Dating Gahagan and Its Implications for Understanding Cahokia-Caddo Interactions. *Southeastern Archaeology* 23(1):57-64.
- Jones, Dennis and Malcolm Shuman
1991 *Archaeological Atlas and Report of Prehistoric Indian Mounds in Louisiana. Vol. 6. Acadia, Lafayette, & St. Landry Parishes.* Museum of Geoscience, LSU, Baton Rouge.
- Neuman, Robert W.
1984 *An Introduction to Louisiana Archaeology.* Louisiana State University, Press Baton Rouge.
- Odell, George
1998 *Archaeology of Prehistoric Native America: An Encyclopedia* ed. Guy Gibbon, 1998 Garland Publishing, New York. p. 211
- Quimby, George I.
1951 *The Medora Site, West Baton Rouge Parish, Louisiana.* Anthropological Series 24 (2). Field Museum of Natural History, Chicago.
- Russo, Michael, and James Fogleman
1996 Stelly Mounds. (16SL1): An Archaic Mound Complex. *Louisiana Archaeology* 21(1994):127-158.

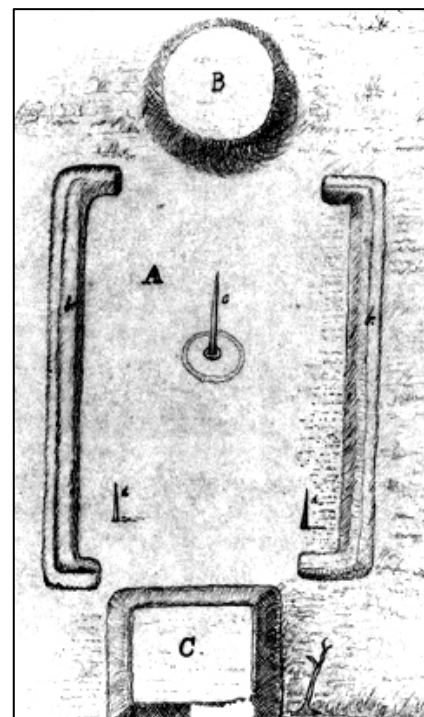


Diagram of a chunky yard by Edwin H. Davis based on drawing by naturalist William Bartram from his unpublished manuscript "Observations on the Creek and Cherokee Indians."

THE SPRING 2014 EXCAVATIONS AT DRAKE'S SALT WORKS

By: Paul N. Eubanks, University of Alabama

In the spring of 2014, the University of Alabama conducted archaeological excavations at the Drake's Salt Works Site Complex, located roughly 20 miles northeast of Natchitoches, Louisiana. These salt works were utilized heavily by the Caddo Indians during the seventeenth and eighteenth centuries and by the Americans in the nineteenth century. The Upper (16WN30) and Little (16NA11) salt licks, in particular, witnessed a considerable amount of salt production. The goal of our 2014 excavations was to search for evidence of year-round Caddo occupation at these two salt licks.

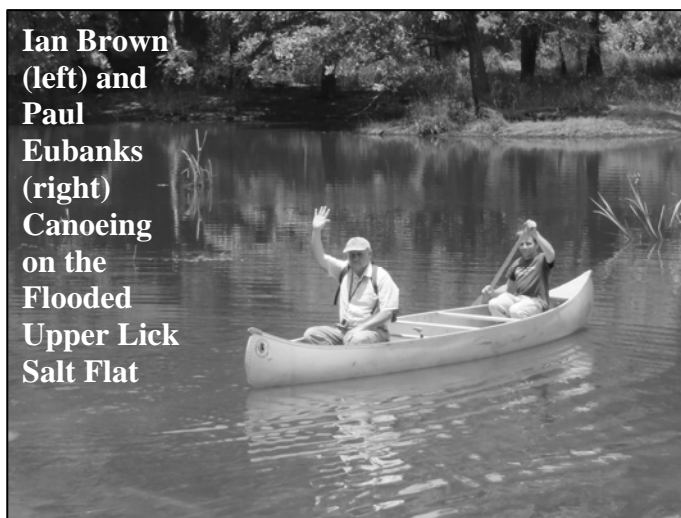
Previously, in 2011 and 2013, the United States Forest Service and the University of Alabama surveyed the hills and terraces adjacent to the salt flats since these locations would have been resistant to periodic flooding, and thus, ideal candidates for extended habitation. During this survey, we identified two potential habitation zones, one at the Upper Lick and another at the Little Lick. In 2014, we returned to these locales and excavated eleven 1 x 3 m test units in an attempt to determine if the salt makers were living near the salt flats on a permanent basis or if they were visiting these sites seasonally or opportunistically. On a natural terrace adjacent to the Upper Lick, we recovered an abundance of salt production debris as well as some projectile points, lithic tools, faunal material, and decorated pottery. These latter materials suggest that some activity other than salt production was occurring in this locale. Since no evidence of permanent, year-round architecture was discovered, it seems that this area may have housed a temporary or seasonal campsite.



Rachel Briggs (left) and Taylor Lawhon (right) Surface Collecting on the Little Lick Salt Flat

A similar campsite may have also been utilized at the Little Lick. Approximately 90 m to the west of this low-lying, flood-prone salt flat is a 6 m-high hill. The artifact deposit on this hill contains considerably more lithic, faunal, and decorated ceramic material compared to the middens of salt production debris on the salt flat. Similar to its counterpart at the Upper Lick, it yielded no evidence of year-round architecture. However, the modern-day field on which this campsite is located has been plowed, burned, and heavily disturbed by Civil War-era salt making, and thus, if a more permanent pre-European settlement was built in this location, there may be little remaining evidence of its existence.

From the historic record, we know that the Caddo salt makers at Drake's Salt Works were capable of producing hundreds of pounds of salt each year. While much of this salt would have been used to season food, a purpose for which it is commonly used today, a considerable amount would have also been employed in the preservation of meat and the tanning of animal hides. Accordingly, the demand for salt and these salt-treated commodities would have increased substantially following sustained contact with European traders and settlers at the beginning of the eighteenth century. Our recent excavations revealed that despite the high demand for salt during this period, the Caddo at Drake's Salt Works were able to profit from the local demands for salt without needing to produce this mineral on a full-time basis.



Ian Brown (left) and Paul Eubanks (right) Canoeing on the Flooded Upper Lick Salt Flat

EXPLORING CENTRAL LOUISIANA'S PREHISTORY AT KRIETZER'S LAST STAND SITE

By Velicia Bergstrom, Kisatchie National Forest

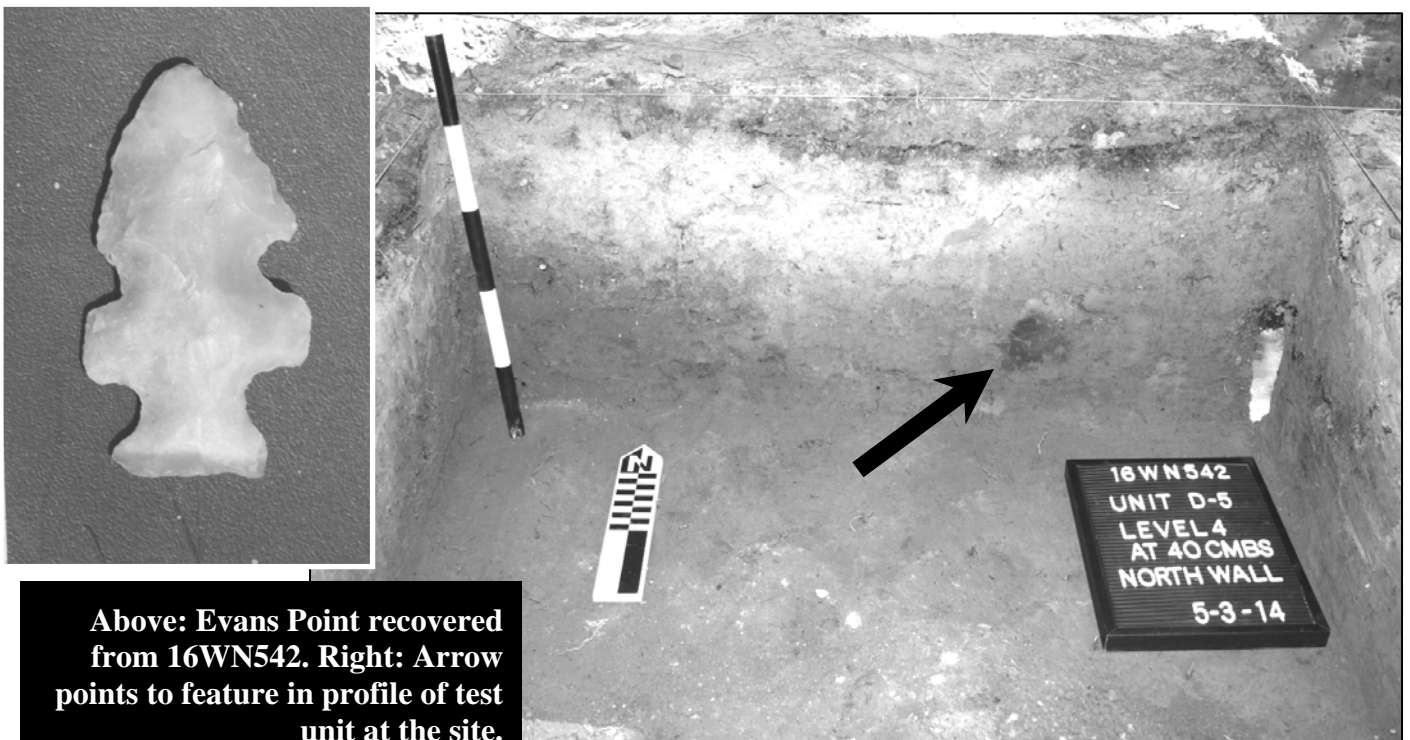
From April 25-May 3, fifteen volunteers joined Kisatchie National Forest (KNF) archaeologists in exploring Louisiana's prehistory. Krietzer's Last Stand site (16WN542) is situated on a ridge within a series of small knolls just south of Dry Creek, where it flows into the Dugdemona River in Winn Parish. The site overlooks the floodplain to the northeast of the ridge and would have been the ideal vantage point for past occupants to view game, gather wild plants, have access to water, and use the natural riverine landforms as easily navigable pathways to resources.

The site was officially reported in 2004, but it was noted then that it already had been disturbed by past unauthorized excavations and pillaging. Artifacts recovered in 2004 included 161 stone tool manufacturing debris (flakes, cores, etc.), as well as both decorated and plain pottery sherds. Some of the diagnostic cultural materials suggest dates that are consistent with the Late Woodland period (ca. A.D. 500 – 1000). However, due to an additional handful of "temporally disjointed" artifacts, the site may be multicomponent, and actually encompass the entire Woodland Period (ca. 1000 B.C. – A.D. 1000). In 2012, additional testing assessed the site's artifact density and determined its boundaries. Finding deep

soils and high artifact densities, KNF archaeologists thought that this site could teach us more about this area's cultural past.

During the most recent work, participants helped excavate and restore the landscape at the site. In fact 7.05 cubic meters were excavated and screened. A potential prehistoric feature was noted on the western edge of the landform. Additionally at a simultaneous archaeological field laboratory, volunteers processed and performed a pre-analysis of the artifacts as they were recovered. Besides the usual suspects of chert flakes, there was also petrified wood and novaculite debitage. Chipped stone tools included knives, utilized flakes, as well as Gary, Kent, Evans, Maud, Friley, Marshall and Evans points. Other lithics included a *metate* and a hammerstone. In addition they also identified Cole's Creek Incised, *var. Mott* and Alligator Incised pottery. For now, we can say that Krietzer's Last Stand site is multicomponent.

In the fall of 2015, KNF will host a laboratory to further analyze the artifacts and data recovered. A soil sample was collected from the possible feature on the western edge of the site. We hope to extract a charcoal sample from it and submit for radiocarbon dating.



Above: Evans Point recovered from 16WN542. Right: Arrow points to feature in profile of test unit at the site.

LOUISIANA ARCHAEOLOGY IN THE MEDIA**ARCHAEOLOGIST DISCOVERS NEW
MOUND AT POVERTY POINT**
Monroe Newstar, May 11, 2014

During survey work in 2011, Poverty Point archaeologist Diana Greenlee happened upon what she thought was an undiscovered mound created by the prehistoric Poverty Point inhabitants.

Additional research, including sediment tests, proved her initial assumption true. Poverty Point has another mound. It was discovered in a remote wooded area of the site and designated now as Mound F.

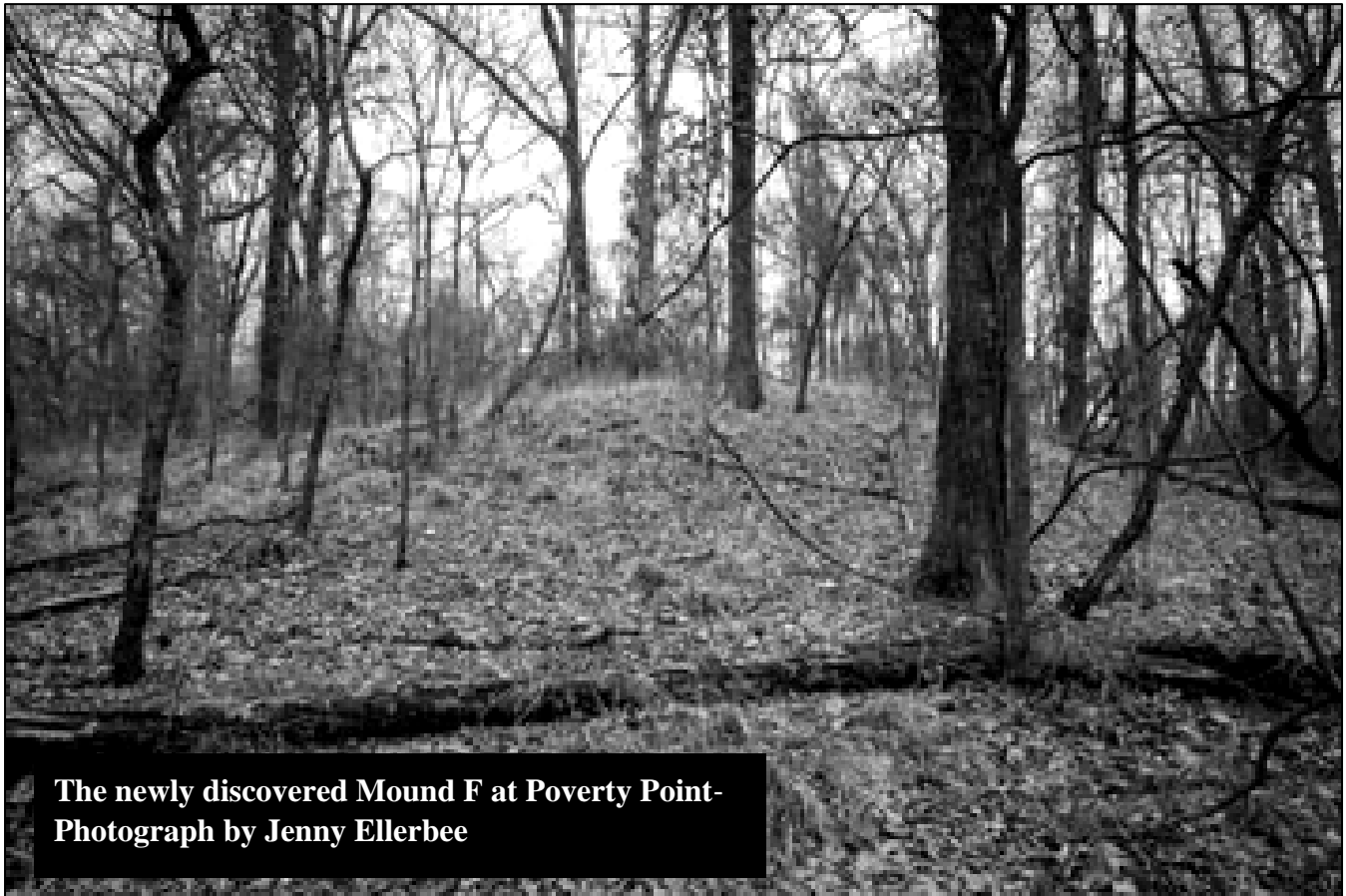
“I wasn’t sure it was a mound because archaeologists have been working here for a hundred years, so what were the chances there was really a mound they haven’t found? I thought it looked like a mound but believed it also could have been some erosional feature. Even though I found it in 2011, I did not have the opportunity to confirm it was a mound until August,” Greenlee said.

It escaped discovery because of its small size — approximately 5 feet high — and its location in a less traveled, heavily wooded area.

“I’m pretty excited. It’s always fun when you learn about something that nobody else knows about,” Greenlee said.

Preliminary investigation suggests the mound was built after 1280 B.C. “It was probably one of the last earthwork projects here at the site by the Poverty Point people,” Greenlee said.

“There will always be discoveries for decades to come. We think it is great we have this site where we are continually having new discoveries,” Griffing said. Additional archaeological research and investigation will be done on Mound F, including more soil tests and limited excavations to determine the purpose of the mound.



**The newly discovered Mound F at Poverty Point-
Photograph by Jenny Ellerbee**

BR SUGAR MILL DIG UNEARTHES CENTURIES OLD ARTIFACTS

Gun flints, human molar among finds

by Ryan Broussard, Baton Rouge Morning Advocate
rybroussard@theadvocate.com, May 19, 2014

Archaeologists got a unique glimpse into what life was like in Louisiana in centuries past through the recent excavation of the old sugar mill at the 575-acre Chatsworth Plantation in south Baton Rouge.

Searching through and around the base of the caved-in brick building that once housed a giant steam-powered sugar mill near La. 30 and Gardere Lane, the team found several unique items, such as a Gay-Ola Cola bottle from the early 1900s, a human molar and more than 200 French gun flints believed to have been used by slaves and workers to build fires.

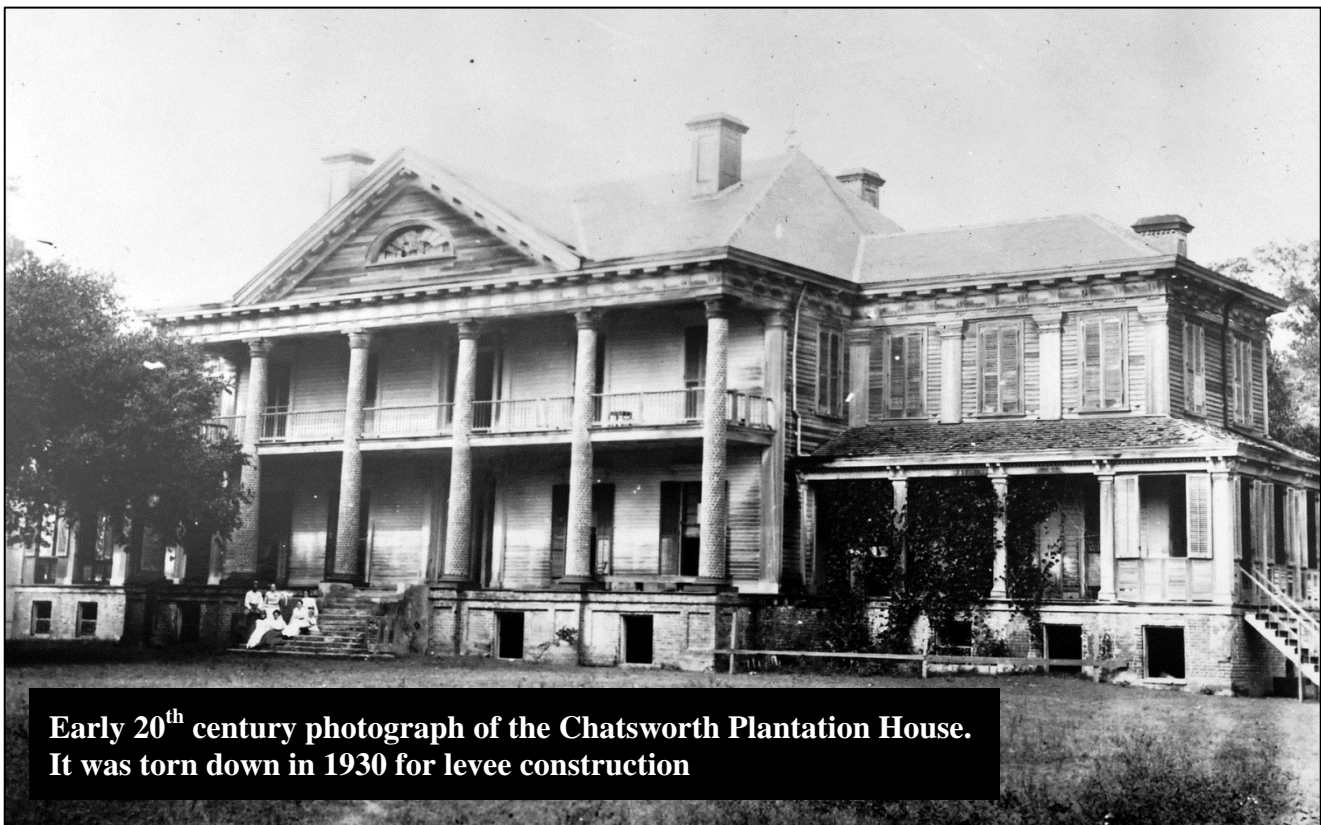
Now they are working to catalog the items they unearthed for an exhibit at the LSU Rural Life Museum researchers hope will paint a broad picture of the time period for interested residents. Dennis Jones, the LSU Rural Life Museum's principal archaeological investigator for the excavation, detailed the finds and plans for a future exhibit in a talk Saturday to members of the Baton Rouge Genealogical and Historical Society.

Jones said researchers hope to finish cataloging all the items they found — including ceramic marbles, porcelain dolls, brass boot heel plates, ginger beer bottles, different coins and items belonging to American Indian tribes who lived in the area until the 1780s — in the next few months, following Jones' mantra of, "It's not what you find, but what you find out."

Jones also said he will probably write a book at some point about the excavation and what they learned along the way.

Initial work began in 2010 by local business Coastal Environments after Pinnacle Entertainment, the parent company of L'Auberge Hotel and Casino, tried to acquire a permit to build on the Mississippi River levee, Jones said. The U.S. Army Corps of Engineers told the company they first had to make sure there were no historical sites on the property, he said.

In the first dig, more than 20,000 items, including broken farm equipment and pottery shards, were recovered and cataloged.



Early 20th century photograph of the Chatsworth Plantation House. It was torn down in 1930 for levee construction



1925 photograph of the foyer of the Chatsworth Plantation House.

Archaeologists from the Rural Life Center began working in October 2012 to clear vegetation around the base of the sugar mill, even bringing in a backhoe to help. They finished in December 2013. “Most folks think a backhoe has no place in archaeology, but I’m here to tell you it does, especially for this place,” Jones said.

Once they cleared away the vegetation and dead trees, researchers found several tunnels running underneath the base of the mill, Jones said. There were alcoves in the tunnels where workers would tighten the screws holding the mill’s grinder in place so the vibrations did not cause the grinder to shake free, Jones said.

“These whole plantations, you just don’t throw these things together. There’s an engineer’s design to this and this is just one of the features in that engineer’s design,” Jones said. They also found areas where double-pen slave and worker cabins sat as well as privies and trash sites.

In his hour long presentation, Jones explained how sugar was at one time one of the more sought after commodities in the world and industrial innovations made it easier, though still risky, to harvest the cash crop in southern Louisiana. Transporting the sugar cane via steamboat was also dangerous because of the dangers in riverboat travel.

Steam engine driven grinders had replaced the animal-powered grinders that had limited the amount of sugar cane farmers could harvest at one time, Jones said. Soon, more than 1,000 large mills popped up all over Louisiana, as plantation owners realized the windfall of a successful sugar cane crop

The history of the Chatsworth Plantation goes back to Fergus Duplantier, son of Magnolia Mound owner Armand Duplantier, who bought about 2,000 acres of land near the Mississippi River around 1830 to begin planting and harvesting sugar cane, Jones said. The first crop was harvested in 1844, which was the same year Fergus Duplantier died.

One of his adopted sons took over running the sugar cane operation and built the plantation in 1859, Jones said. The plantation went through several owners, including Francois Gardere, until the federal government ordered the by then dilapidated home torn down in 1930 to build new levees following the flood of 1927.

Years passed and the vegetation took over, growing back where sprawling sugar cane fields once sat and erasing most of the existence of the Chatsworth Plantation. “By 1992, you would have never known anything was ever there,” Jones said.

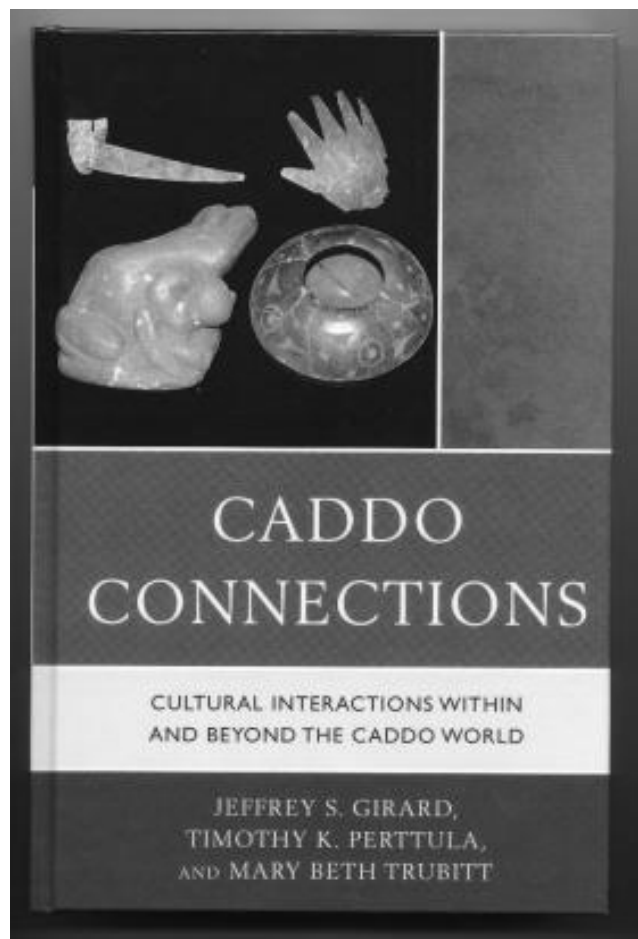
'CADDO CONNECTIONS' SETS UP RESEARCH-DRIVEN VIEW OF CADDO CULTURE

By Kate Archer Kent,
Red River Radio, Shreveport, LA

The regional archeologist for northwest Louisiana, based at Northwestern State University in Natchitoches, is out with a book this month that examines the dynamic cultural landscape of the Caddo people and their complex connections with the greater Native American community in the Southeastern U.S.

Jeffrey Girard is the co-author of “Caddo Connections: Cultural Interactions Within and Beyond the Caddo World.” Girard says the book traces the Caddo Indians over 1,000 years and compiles a decade of the latest research.

“We tried to do a synthesis of some of the research on the Caddo people that lived in this area -- northwest Louisiana, northeast Texas, southwest Arkansas, and southeast Oklahoma,” Girard said. “It’s a big culture area. We tried to pull together a lot of recent research and look at the diversity within that area and how things changed through time.”



Jeffrey Girard, a regional archaeologist for the Louisiana Division of Archaeology, studies early Caddo sites in his 13-parish region

“Caddo Connections” is a scholarly reference text geared toward North American archeologists. It’s full of citations that can be used as a jumping off point for further research, according to Girard. The Caddo people are interesting to study, he says, because they played a key role in the development of Southeastern Indian culture stretching back to at least the 10th century

“We’re trying to situate the Caddo within the larger sphere of Southeastern Indian groups, and that really hasn’t been done before,” Girard said.

“Caddo Connections” is published by Rowman & Littlefield. Girard’s upcoming field work will focus on Caddo sites north of Shreveport in the Red River floodplain. The artifacts on the book’s cover are on display at the Louisiana State Exhibit Museum in Shreveport.

Girard co-wrote the book with Timothy Perttula, owner of Austin, Texas-based Archeological & Environmental Consultants and Mary Beth Trubitt, an archeologist with the Arkansas Archeological Survey and an anthropology professor at University of Arkansas.

ARCHAEOLOGISTS DIG INTO HISTORY OF LEESVILLE'S SMART HOUSE

By Kenneth Cochran, Leesville Daily Leader, May 25, 2014

On Wednesday morning, members of the West Louisiana Archaeology Club, sponsored by the Louisiana Archaeological Society began initial investigations into the history and day to day lives of the inhabitants of the historical Smart Plantation House circa 1850s.

The house was once home to Dr. Edmund E. Smart and his family, who owned a large amount of land in Leesville, part of which he donated to become the parish seat when Vernon Parish was formed from part of Sabine Parish,

James Turner is now the owner of the Smart House and has set out to restore it to its original form as it would have appeared in the mid-nineteenth century.

"We're trying to learn more about the history of the area and the material culture in terms of what people had here and they discarded and to learn more about how the live," Jeffrey Girard Regional Archaeologist with Northwestern State

University, explained. "Lots of times in the history records, it'll tell you who lived here, but it won't tell you much about their daily live."

The initial investigation Wednesday involved two teams of three people sifting through a box that had a screen-like bottom.

The items too large to fall through the screen were assessed to see if they were manmade, bone, or rubbish such as rocks and roots.

Evidence of a possible cistern buried near the house is already causing a buzz among those working this site.

The archaeologists on site already have plans for more in-depth excavations and research in which they'll attempt to map out the layout of the Smart's land. In just one day, fragments of nineteenth century tableware and early twentieth century glass bottles and vials have turned up during the investigation, alluding to more possible finds waiting beneath the Earth's surface.



Left: Archaeologists teams from Vernon and Beauregard Parishes sift through dirt to try to uncover artifacts from the mid-nineteenth century that may have been used by the people of that time.

Below: A variety of bottles, vials and tableware has already been unearthed during initial investigations into the history of the Smart Plantation House.



MEETINGS, FIELDWORK, EXHIBITS, WEBSITES, ETC.



**LAS Annual Meeting
Leesville, Louisiana
February 20-22, 2015**

Check LAS website, Facebook page, or the next LAS newsletter for details as they become available.

**Annual Meeting – Arkansas Archaeological Society
October 3–5, Springdale, AR
Holiday Inn & Convention Center,**

Keynote Speaker will be University of Arkansas Distinguished Professor of Geosciences David Stahle, an expert dendrochronologist.

One of the Sunday tours will be at the Crystal Bridges Museum of American Art and will include the very exciting and unique exhibition, *State of the Art: Discovering American Art Now*. Check www.arkarch.org for details.



PARTY LIKE IT'S 1600 B.C.

OCTOBER 11, 2015

COME TO THE POVERTY POINT SITE TO CELEBRATE ITS LISTING ON UNESCO'S WORLD HERITAGE LIST.

CHECK THE FACEBOOK PAGES OF LAS OR THE POVERTY POINT STATE STATION ARCHAEOLOGY PROGRAM

**51st SEAC Annual Meeting
Nov. 12-15, 2014 in Greenville, SC
Organized by the South Carolina Institute of
Archaeology and Anthropology
(SCIAA)**

Check www.southeasternarchaeology.org for details



**Louisiana Archaeological Society
Membership Application and Dues Renewal**

*Dues and Publication Orders also possible via
PayPal at the LAS website:
www.laarchaeology.org*

For Year _____
Membership Category

Regular.....	\$20.00	
Associate.....	\$5.00	
Student.....	\$12.00	
Life.....	\$200.00	
Sustaining.....	\$300.00	
Institutional (Museums, Libraries, Agencies (etc.)	\$20.00	
	Subtotal	

Member Information

Name _____

Organization/Affiliation _____
Address _____

City _____ State _____ Zip _____

Phone Number _____

E-mail _____

Associate Member Name(s): _____

Back Issues of LAS Bulletins are \$8.00, but discounts are available for large orders. Special Publications are available for \$4.00.

#1- 1974 - out of print	#13 - 1986 ()	#25 - 1998 ()	#37 - 2010 ()
#2 - 1975 - out of print	#14 - 1987 ()	#26 - 1999 ()	#38 - 2011 ()
#3 - 1976 - out of print	#15 - 1988 ()	#27 - 2000 ()	
#4 - 1977 - out of print	#16 - 1989 ()	#28 - 2001 ()	
#5 - 1978 - out of print	#17 - 1990 ()	#29 - 2002 ()	
#6 - 1979 - out of print	#18 - 1991 ()	#30 - 2003 ()	
#7 - 1980 ()	#19 - 1992 ()	#31 - 2004 ()	
#8 - 1981 ()	#20 - 1993 ()	#32 - 2005 ()	
#9 - 1982 ()	#21 - 1994 ()	#33 - 2006 ()	
#10 - 1983 - out of print	#22 - 1995 ()	#34 - 2007 ()	
#11 - 1984 ()	#23 - 1996 ()	#35 - 2008 ()	
#12 - 1985 - out of print	#24 - 1997 ()	#36 - 2009 ()	
		Subtotal	

Special Publications
#1 Stone Points of NW LA
#2 Radiocarbon Dates

Optional Tax Free Donation: Roger T. Saucier Memorial Fund _____

Send Payment to: Julie Doucet, LAS Treasurer 8863 Bayside Avenue Baton Rouge, LA 70806 www.laarchaeology.org	Membership, Publications, and Donation Total: _____ Make Checks Payable to: Louisiana Archaeological Society
--	--

Information for Subscribers

The Newsletter of the Louisiana Archeological Society is published three times a year for the society. Subscription is by membership in the Louisiana Archeological Society (LAS). Annual membership dues are \$20 for individuals, libraries, and institutions, \$5.00 for associates (relatives of individual members), and \$12 for students. Life membership dues are \$200 for individuals. Sustaining membership dues for individuals or institutions are \$300. In addition to the newsletter, members receive one issue per year of the LAS bulletin *Louisiana Archaeology*. Membership requests, subscription dues, changes of address, and back issue orders should be directed to the Treasurer. Unless otherwise indicated, opinions stated herein are those of the editor or authors and do not necessarily reflect society policy.

Information for Contributors

Send all notes, news, graphics and other communication to:

Dennis Jones, LAS Editor

1801 Ormandy Dr. Baton Rouge, LA 70806

archaeoman.jones@gmail.com

Articles should be submitted by email, preferably in Microsoft Word. Digital images are encouraged. Please send in TIF, JPG or Word format. Contact editor via email with all questions.

LAS Web Site

www.laarchaeology.org

LAS Officers

President: Brad Lafitte, Mansfield, LA

Vice President: Mark Richard, Lafayette, LA

Secretary: James Fogleman, Morrow, LA

Treasurer: Julie Doucet, Baton Rouge, LA

Editor: Dennis Jones, Baton Rouge, LA

Webmaster: Carlos Perez, Baton Rouge, LA

All officers can be contacted through the LAS website



Editor - Louisiana Archaeological Society
1801 Ormandy Dr.
Baton Rouge, LA 70808