

Louisiana Archaeological Society

NEWSLETTER OF THE LOUISIANA ARCHAEOLOGICAL SOCIETY

Vol. 6, No. 2



April, 1979

IN THIS ISSUE:

A Note from the Newsletter Editor... 1; Society Publication An Open Letter to the LAS Readership... 3; Information for Authors... 5; Non-Professionals express concern... 6; Historic Ceramics... 8; Dates from Coquilles (16JE37)... 12; Notes, News and Comments... 18; New Publications... 21.

A NOTE FROM THE NEWSLETTER EDITOR

On April 23, 1979 this editor "put to bed" the first number of this year's Newsletter volume. That means that the text was edited and arranged and was sent to the U.N.O. Anthropology and Geography secretarial staff. I felt pretty good about it as it looked fat and I had made (I thought) the rough time frame that I had promised to the LAS Executive Committee when they appointed me to this post during the Lake Charles meetings in January. I should point out that the January issue was already late because I did not become editor until it was already due. Anyway, back to April 23 and the composed Newsletter. I failed to take into consideration in my selfpride, that this was the period that the department secretairies were heavily engaged in typing final exams for fourteen faculty in the department, typing another newsletter for the Chairperson of the department, also typing two manuscripts for other senior faculty and getting ready for the U.N.O. Summer Term. The L.A.S. Newsletter was placed on low priority. By sometime late in May, it was typed and given to a student worker to deliver to the printer. That was the last anyone ever saw it. The printer never received it, the student worker graduated and left. At anyrate, the now out of date, Newsletter was retyped between other duties, vacation schedules, summer registration and so forth. This copy was carried to the printer, an order made and subsiquently printed. As it turned out, I made a mistake in the number required so two batches were run, the last of which was mailed September 6. Things do work well when one has one's act together. This number went to the printer on August 28.

The Newsletter of the Louisiana Archaeological Society is published by the Society from the office of the Newsletter Editor. Send notes, news and articles to J. Richard Shenkel, LAS Newsletter, 7709 Mayo Blvd., New Orleans 70126. Unless otherwise indicated, opinions herein are those of this editor or other individuals and do not necessarily reflect Society policy.

The vagaries of reliance upon free and/or cheap university resources for Newsletter production was temporarily abandoned at my recommendation by the Executive Committee Meeting at Asphodel Plantation on July 23. This number is both commercially typed and printed and will, hopefully take less than three months to get from my desk to yours.

Now about publication schedules --- this Newsletter is supposed to be published in January, April, July and October. Obviously, we are not on schedule this year, but I am going to get out another issue in September and the final issue in November whether there is anything in them or not.

For the next issue, I assume that everyone did not sleep the summer away. What did you do - where did you go - what have you found? What is the Chapter news? We do have Chapters - don't we? Send me news!

The final issue of this year should contain details about the next annual meeting to be held in Alexandria at the Sheraton Inn on February 1, 2 and 3, 1980.

I mentioned above that there was a meeting of the Executive Committee of the LAS at Asphodel Plantation on July 21. The full minutes of that meeting will be published in the Newsletter at a later date as they have not yet been compiled, but several notes of interest did occur that should be mentioned in anticipation of that fuller account.

The editors of both the Bulletin and the Newsletter gave truly heart rending accounts of their woes and tribulations. But, in the end, if they can be believed, they felt that the publications promised and owed would be on schedule next year. That is if all of the manuscripts promised are, in fact written.

The Cultural Resources Code of Louisiana or the "Standards" as they are frequently called were discussed by Dr. Kathleen Byrd, State Archaeologist. This document has great importance to all of us doing archaeology in the State and because of comments from all spheres, both professional and non-professional, is again being revised. More about the Code and some of the meeting results later in this issue.

Debbie Woodiel and Jim Spencer gave a brief summary of the LAS Summer Field Workshop at the Mannin Site 16CT189 on Delta Farms near Jonesville. Tentative dates were set for next year at the same site. Two weeks for next year with one day off in the middle of the session to let the crew chiefs get their heads straight, Friday June 14 through Saturday June 21 - Sunday June 22 off, then Monday June 23 through Sunday June 29. Plan your vacations early. We would like a better turnout than we had this year. It is a good site and it looks as though its completion will contribute significantly to our understanding of Troyville.

Two new chapters were admitted to L.A.S. Baton Rouge and Northwest (Shreveport). Welcome and congratulations.

I'll end this note with a repetition of my earlier request. Send news, also notes, short articles and comments.

SOCIETY PUBLICATIONS:
AN OPEN LETTER TO THE LAS READERSHIP

Because of the seemingly unending increase in occupational responsibilities which were consuming more and more of my time, I felt obliged to resign as newsletter editor in the last quarter of 1978. However, I retained the capacity of bulletin editor. In this context, let me publically express my appreciation to the Executive Committee and the general membership for cherished "Editor Emeritus Award" presented to me at the annual meeting in Lake Charles.

Of late there have been legitimate questions about Society publications, none directed to me personally, but apparently a number have been expressed to Mr. Tommy Ryan, LAS vice-president, who has passed this concern on to me with pledges of Society aid. That the concern is real is also evident by a resolution by the Delta Chapter to the Executive Committee concerning publication delays. Real or imagined, small group or large group concern irrespective, the failure for newsletters and bulletins to appear when expected is deserving of explanation. Since I was not given an opportunity to present an editor's report at either the executive committee meeting or the general business meeting in Lake Charles, I have opted to explain the situation to the readership in the form of this open letter. Be reminded, I speak only as bulletin editor, not newsletter editor, that position being assumed by Dr. J. Richard Shenkel in January 1979.

Since the creation of the LAS on May 24, 1974, I have edited three annual bulletins. Perhaps it was a mistake to date the first bulletin 1974, because it was January 1976 before enough articles were received and printing accomplished to make No. 1 available to the membership. Bulletin 2 (for 1975) was produced within one year after the first. It was available for distribution at the 1977 annual meeting. But even then we were two calendar years behind in bulletin dates, though considering the lag between Society formation, financial solvency, and bulletin appearance, we were right on schedule. In the business meeting at the Baton Rouge (January 1978) annual meeting, a resolution was passed requiring that the annual bulletin contain a minimum of 150 printed pages. This requirement initiated a compromising limitation on bulletin publication which has persisted to this day. Even with this hurdle to overcome, bulletin 3 (for 1976) was made available to the membership within one year and four months after bulletin 2. However, now the calendar year was 1978. Still two calendar years behind, but now for the first time a real production year lag had developed.

The Society membership is presently awaiting Bulletin 4 (for 1977). As of this writing, I can report that this issue is presently in page mock-up stage and should be distributed within a month or two at the latest.

However, this has not solved the problem of making the annual bulletin current with the calendar year. I shall comment on my perception of the contributing difficulties shortly, but first I would like to present my intentions for overcoming this problem. I have elected to make the next two bulletins special issues. I have solicited and will shortly receive for consideration the Hanna site report by Thomas, Campbell, and others. It will, unresolvable complications withstanding, become Bulletin 5 (for 1978). For Bulletin 6 (for 1979), I have 8 manuscripts in hand, manuscripts solicited for a book I was planning--now shelved--which with authors' permission will be sufficient for another special issue. If this production can be timed so that type-setting and printing/binding are orderly sequential, there will be no reason why the 1979 issue cannot appear early in 1980. If the USL printing services runs into production problems, we will go to outside printers. It, thus, appears possible that we will be able to resolve our immediate problem of producing a current bulletin. However, the root cause of bulletin lag has not been solved and I propose to offer some constructive suggestions which I hope will be heeded by the membership.

If I had depended on freely submitted manuscripts for bulletin production, I would hate to say how long we might have had to await bulletin 5 (for 1978), not to mention 6 for 1979, and bulletin 7 (????). It will not be often, members, when special issues can take the place of regular bulletins, especially when it has always been this editor's desire to see "special" issues as lagniappe for annual dues. If this editor must adopt the policy of soliciting every manuscript for bulletin inclusion, then someone else will have to assume editorship because my previous experience with this policy (two books and two book-length monographic reports) has been one of misspent energies, consumption of valuable time, and complete frustration. You members are simply going to have to submit manuscripts for consideration. And not just one or two; these will not constitute a bulletin even if they are acceptable. If you are going to do archaeology, it should be reported. And it should be reported in the recommended style and format (cf. any issue American Antiquity or previous bulletin) so as to avoid unnecessary complications in editorial review, return for extensive corrections, and resubmissions.

I do understand and share the concern over bulletin delays. I appreciate the offers of help, such as pledges of financial and editorial assistance from Mr. Ryan, LAS vice-president. Let the record, however, be set straight, I do not need that kind of help. As editor, I am empowered by the constitution and by-laws to do whatever is necessary along lines of production to get the bulletin out. No members, it is the bulletin, not me, that needs help. And the only way is for you to start submitting manuscripts.

Sincerely,

Jon L. Gibson
LAS Bulletin Editor

INFORMATION FOR AUTHORS

To expedite the editorial processing of manuscripts submitted to Louisiana Archaeology, the following guidelines should be observed. Failure to comply with these standards will necessitate the immediate return of the manuscript and cause an unnecessary delay in evaluation.

General. Two copies of a paper should be submitted. Original must be typed one side only of white high quality, bond paper (not easy-erase). A clear carbon copy or xerox copy will suffice for the second copy. Papers should be double-spaced. One-inch margins should be allowed on all sides. Include an abstract of less than 150 words that specifically relates to your paper.

Reference and Bibliography. Footnotes are not permitted. Citations should be set in parentheses within body of text, e.g. (Author 1974: 10-12). Citations should be placed immediately after reference to the source and should not be collected at the end of a paragraph.

References are listed alphabetically by author and chronologically by year. Following are examples of bibliographic format:

- (article) Long, Austin and Bruce Rippeteau
1974 Testing Contemporaneity and Averaging
radiocarbon dates. American Antiquity
39:205-215
- (Chapter) Binford, Lewis R.
1972 Contemporary model building: paradigms
and the current state of Palaeolithic
research. In Models in Archaeology,
edited by David L. Clarke, pp. 109-
166. Methuen, London.
- (book) McGimsey, Charles R. III
1972 Public Archeology. Seminar Press,
New York.

When citing unpublished manuscripts or papers presented at meetings, always include date and place where copy of the manuscript is available or where paper was delivered. References to unpublished theses and dissertations must include department and university name and location. No underlining should be used in citations of unpublished materials.

For additional information check current issues of Louisiana Archaeology (or American Antiquity). It is the authors' responsibility to insure bibliographic accuracy and consistency.

Radiocarbon Ages. Give radiocarbon ages in the following forms:
11,950±180 radiocarbon years: 10,000 B.C. (Z-689), if not previously cited;
1,000±100 radiocarbon years: A.D. 950 (Jones 1970:14), if previously cited.

Illustrations. All line drawings and photographs are referred to as "Figures" and should be numbered consecutively. Figures should be of high quality and of a size suitable for reduction to effective page size of the bulletin (check current copies for proper dimensions). Space for captions should be allowed for within page size limitations.

Because of cost, photographs should be held to a minimum. Production of illustrations should follow the recommendations of Shiner and Shiner (Bulletin of the Texas Archaeological Society, Vol. 39, pp. 163-166). Black ink, line drawings are encouraged and should be made on high quality paper, tracing vellum, or mounting board. Lettering should be done with LeRoy Lettering equipment or with press-on lettering. Hand lettering should be avoided.

Captions should be concise but telegraphic, typed on a single page, and placed after the bibliography.

All manuscripts will be reviewed within one month after receipt and authors will be notified immediately as to disposition of paper. The editor may call on outside readers to assist in evaluation.

NON-PROFESSIONALS EXPRESS CONCERN TO SECRETARY OF
DEPARTMENT OF CULTURE, RECREATION AND
TOURISM

by
Brian J. Duhe

In a recent L.A.S. newsletter (Vol 5. No. 3) a well known and respected professional archaeologist issued a challenge to us all to adopt a common cause, the best archaeological program in the nation; to voice our opinions as archaeologist and citizens of the great state. To let our feelings be known to the L.A.S., to the staff of the Division of Archaeology and Historic Preservation, to the Louisiana Archaeological Survey and Antiquities Commission, to the political understructure, to the Governor and above all to our respective legislators. A challenge was issued to let the cry for a better Louisiana Archaeology resound throughout our state. A plea was made to join the movement for change.

Apparently the non-professional archaeological community has accepted this challenge and has taken action to remedy certain problems which it felt would be harmful to Louisiana Archaeology.

A resolution initiated by the Delta Chapter (New Orleans) L.A.S. and circulated throughout the state was sent to Dr. Larry Crain, Secretary Culture, Recreation and Tourism, expressing concern over the lack of recognition given to non-professionals in the draft of the Cultural Resources Code of Louisiana. Responding to this resolution Dr. Crain called a special meeting on Saturday, July 14, 1979 to meet with these concerned non-professionals.

Attending the meeting and representing the Department of Culture, Recreation and Tourism was Dr. Larry Crain, Secretary, Dr. Bernard Carrier, S.H.P.O., Dr. K. Byrd, State Archaeologist, Mr. Eddie Martin and Mr. Charles Minyard. Representing the non-professional archaeologist were Dr. Tommy Johnson and Mr. Charles Harper, Lafayette, LA., Mr. and Mrs. Forrest Travirca III, Mr. Joseph Manuel, Ms. Judy Reggio, and Mr. Brian Duhe. Mr. Thomas Ryan, member of the Louisiana Archaeological and Antiquities Commission was also present. After everyone was introduced to each other Dr. K. Byrd asked if anyone of the non-professionals would care to begin. Mr. Brian Duhe acting as unofficial spokesman for the group, read a prepared statement in which he expressed the major concerns of the non-professional archaeologist in the State. These concerns were:

- 1) The code does not recognize non-professional archaeologist and the contributions that they have made and can make toward preserving and promoting Louisiana's cultural heritage. It was agreed to by those attending the meeting that the term "Qualified Non-Professional" would be included in Chapter I, Section (2) Definitions of the Code. Minimum requirements of a qualified non-professional would be:
 - a. Must be an active member in good standing of a local L.A.S. chapter.
 - b. While not having specialized formal training, a qualified non-professional must be able to demonstrate that he has field experience which qualifies him to conduct salvage archaeology and a publication record which demonstrates some degree of professional expertise in field work and report preparation and/or an agreement to publish a report of the work done if permission is granted.
 - c. The Louisiana Archaeological Survey and Antiquity Commission would serve as a final judge of these qualifications and would make recommendations to the Secretary.
- 2) Certain "Qualified Non-Professionals" have been and can be very helpful in Level I and Level II Cultural Resource Investigations when properly orientated and supervised. The code excludes this type of participation and should make provisions to use these qualified non-professionals as a source of man-power and information. All in attendance agreed that this was a good point to be considered.
- 3) The Central State Cultural Resources file material should be made available to certain qualified non-professionals who request such information for valid scientific investigations and research. This is extremely important since it is the dedicated non-professional who has contributed much of the information (new site reports, etc.) to these files. Unless the flow of information is open both ways, the non-professional may discontinue to report his finds to the State's central office. This would be a great loss to the State. All in attendance agreed that this was a valid point and should be considered.

- 4) The Louisiana Archaeological Society which is the only organized body of professional and non-professional archaeologist in the State should be represented on the Louisiana Archaeological Survey and Antiquities Commission by a delegate of its choice, chosen by the L.A.S. Executive Committee. The delegate should be a non-professional archaeologist and would be approved by the Commission members before recommended to the Governor for appointment.

Representatives of the Dept. of Culture, Recreation and Tourism announced that they had already prepared and submitted Legislation to take care of this problem.

- 5) Some provisions should be made to utilize as a source of manpower and information certain qualified non-professional archaeologist in survey and reconnaissance work and salvage archaeology on State property. The State has admitted that it does not have the staff nor the finances to save many of its cultural resources from destruction. Under proper supervision and rigid guidelines, certain non-professionals could be granted permission to help salvage this valuable information.

All were in agreement that this was a valid point and agreed to draw up a separate chapter (Chapter VII) of the Cultural Resources Code to outline and govern the permitting policies of "qualified non-professional work" on State property.

While this meeting was called at a rather short notice after Dr. Crain had received a resolution from the Delta Chapter, L.A.S. expressing concern in the above mentioned areas, everyone left the meeting with a feeling of accomplishment and with the personal and written guarantee from Dr. Crain that he does recognize the importance and contributions that non-professional archaeologist have made in Louisiana. Dr. Crain also assured those in attendance that he would recommend that the code be changed to include "qualified non-professionals" and to include the use of certain qualified non-professionals in salvage work on State owned property.

The idea of a certification program was also raised. Dr. K. Byrd, State Archaeologist, offered the service of her office to help organize and administer a certification program for non-professionals. All were in agreement that this should be looked into.

HISTORIC CERAMIC

by

Edward R. Chatelain

To date little attention has been given to historic sites and historic artifacts in the Louisiana Archaeological Society Newsletter. This article consist of a cursory outline and bibliography of sources on the ceramic artifacts most commonly recovered from historic sites in Southern Louisiana. It is hoped that it will be a useful introduction to the identification of historic ceramic artifacts.

into the kiln at the point of greatest heat. Soda from the salt combines with silica and alumina in the vessel body to produce a clear, glassy pitted surface glaze with a texture not unlike an orange or chicken skin. The surface of stoneware vessels can be left plain, decorated with appliques or impressions, or before firing the vessel can be dipped in a solution of the desired color and the salt glaze applied over this slip.

An important variety of stoneware is called Ironstone but may also be referred to as Stone China, New Stone and Semi-porcelain. Ironstone is an opaque ware consisting of a heavy, thick and dense semi-self glazing stoneware body composed of Kaolin clay which may display semi-translucent rims. It was patented in 1813 by a Staffordshire potter but potters had been experimenting with a ware of this type from the early part of the 19th century. It is a durable, inexpensive utilitarian product which is still produced today in essentially the same manner as 1813 and can be found in almost any restaurant. It is one of the most common 19th century wares found on archaeological sites. Ironstone was traditionally produced in plain white, green, purple, blue and red transfer patterns and occasionally hand painted in floral designs.

A subcategory of Ironstone is bone china or whiteware which consist of a Kaolin clay body identical to the Ironstone body except that bone ash is added. Whiteware is usually plain white, thinner than ironstone, hard and vitreous (Godden 1966, Hume 1969, Charleston 1968, South 1977).

Porcelain. Porcelain is the epitome of the ceramicists' art. It is made of Kaolin clay and china rock (petunse) and is thin, delicate and translucent. These characteristics are acquired by firing the vessel at temperatures well over 1400° C at which point the body is fully vitrified and self glazed. Porcelain is most commonly left plain white, transfer printed in blue or hand painted. Porcelain frequently loses its surface decoration when buried in archaeological contexts. English porcelain, the type most commonly recovered from Southern Louisiana, was first successfully produced in 1745, in Staffordshire. It was always, as it is today, a fine expensive ware (Charleston 1968, Hume 1969).

Coarse Earthenware. Vessels consisting of thick coarse earthenware bodies either unglazed or with a light green, red or brown lead glaze are often recovered. The interior of these vessels were sometimes glazed, the exterior left unglazed. These wares were available throughout the 18th and early 19th century as containers of a wide variety of articles. Many of these wares are known to have been produced in England but their exact production location and dates are undefinable; some of these wares may have been locally produced.

One sub-variety in this group is the Iberian storage jar. They are known to have been produced on the Iberian peninsula and originally were used to store olive oil. They usually stand between 1.5 and 3.0 feet in height, consist of thick earthenware paste, are yellow or buff in tint, are carrot shaped and occasionally have a light lead glaze on the interior (Hume 1969:144, Miller and Stone 1970).

RADIOMETRIC DATING SAMPLES
UNIVERSITY OF GEORGIA GEOCHRONOLOGY LABORATORY

Site Description:

Site Number - 16 - Je - 37
Site Name - Coquilles Site

Site Location - Jefferson Parish, Louisiana, 29° 47' 34" North Lat. -
90° 07' 10" West Long., USGS Quad. Bertrandville, La.
(N2945-W9000/7.5) on Louisiana State Hwy. 45 approx.
2½ miles N-W of Crown Point, Louisiana, at the confluence
of Bayou des Familles and Bayou Coquilles.

Sample Description:

Excavation Unit - 10 DATE: 1760±90BP, 180AD
Level Number - 8 (Lot 20)
Elevation (from project datum) - 9.87 - 9.77 meters

This sample is from mixed midden material, not associated with any specific feature. It should date a Late to Middle Marksville occupation of the site. Within the level were several Marksville ceramic types from the late period and could date between AD 200 and AD 600.

Sample Description:

Excavation Unit - 10 DATE: 1695±205BP, 255AD
Level Number - 1 of Feature 2
Elevation (from project datum) - 9.67 - 9.52 meters

This sample is from Feature 2, possible deep fire pit, and from its relative elevation should fall into the Middle Marksville Period.

Sample Description:

Excavation Unit - 10 DATE: 1750±80BP, 200AD
Level Number - 12 (Lot 34)
Elevation (from project datum) - 9.37 - 9.27 meters

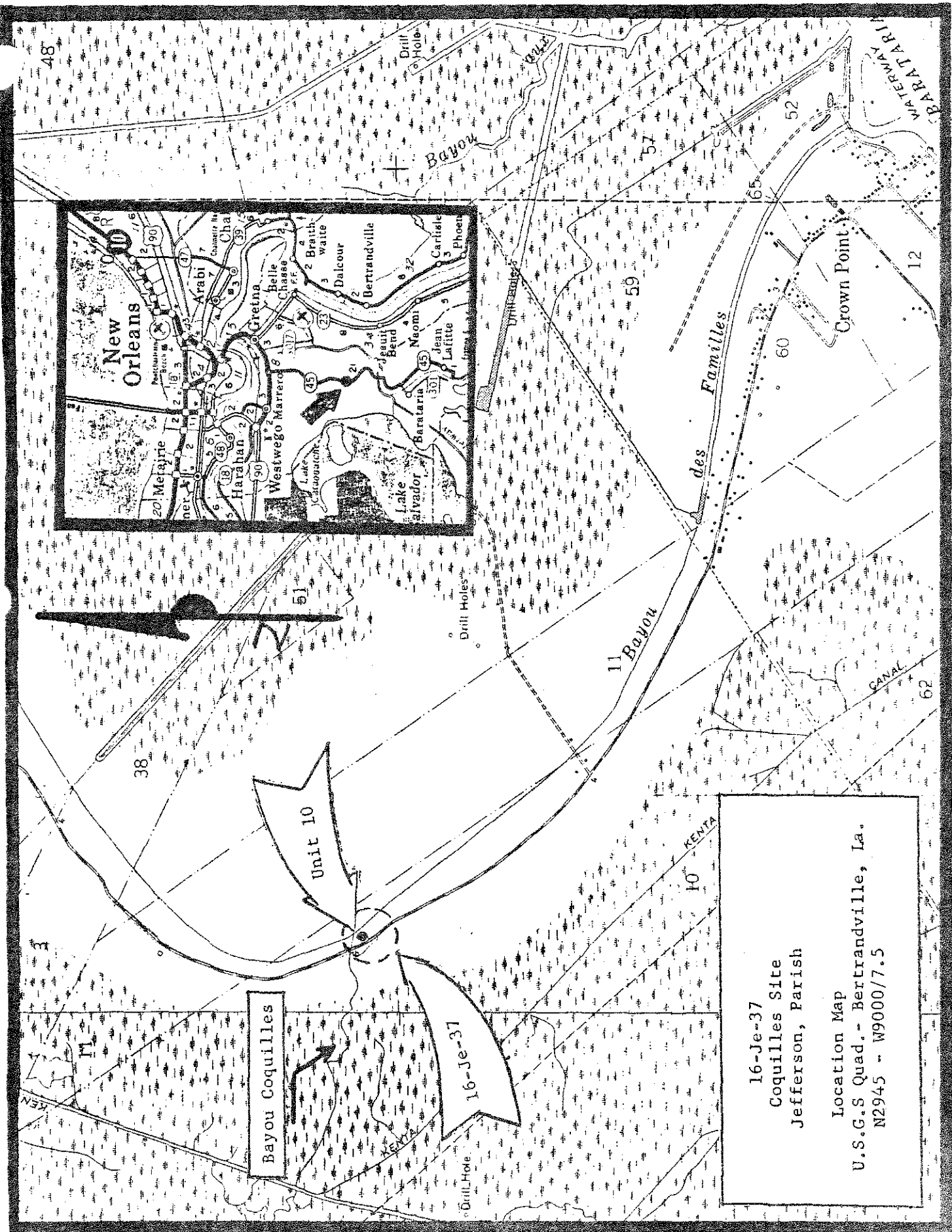
This sample is from general level excavation and is not associated with any particular feature. It could date to the middle Marksville Period.

Sample Description:

Excavation Unit - 10 DATE: 1835±75BP, 115AD
Level Number - 14 (Feature 4)
Elevation (from project datum) - 9.12 meters

This sample is from Feature 4, a charcoal concentration which could have been a firepit. From its stratigraphic position it should date Middle to Early Marksville.

Excavator: Richard C. Beavers
Coordinator
Archaeological and Cultural Research Program
University of New Orleans

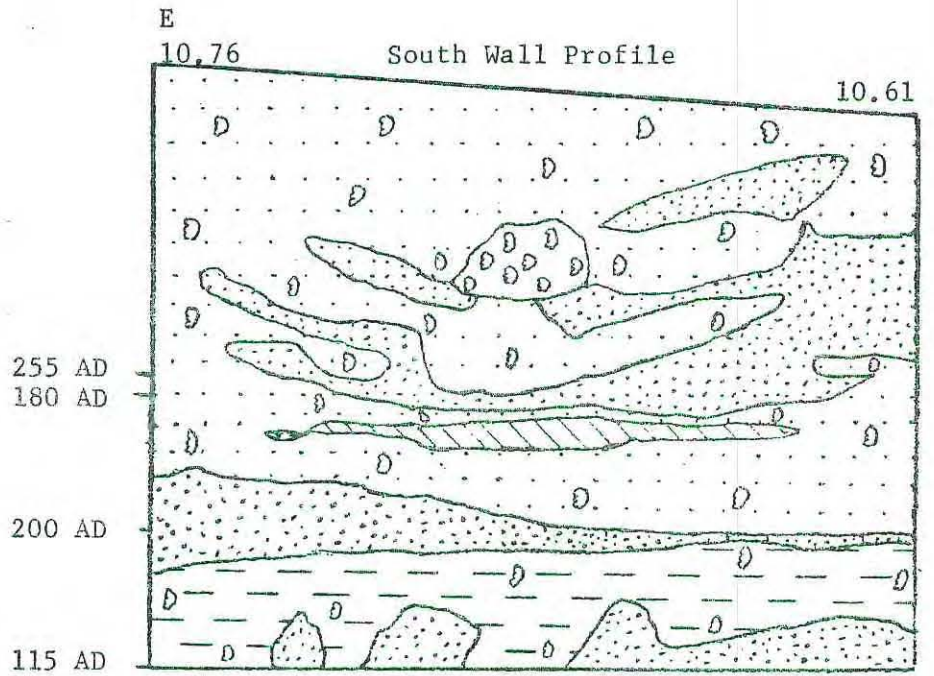


16-Je-37
 Coquilles Site
 Jefferson, Parish

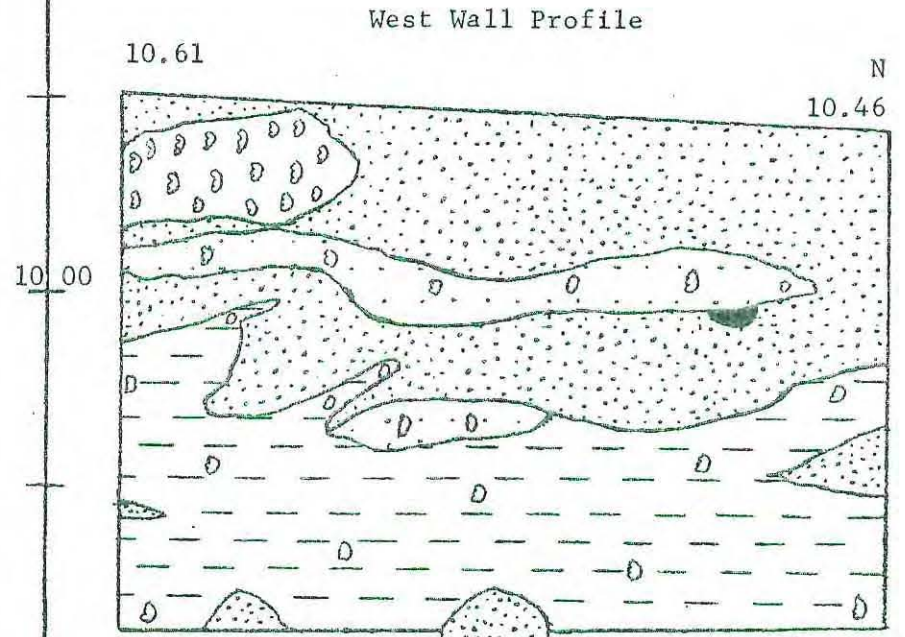
Location Map
 U.S.G.S Quad.- Bertrandville, La.
 N2945 - W9000/7.5








COQUILLE SITE (16-JE-37) WALL PROFILES

Excavation Unit 10, Summer, 1978



11.00 Meters



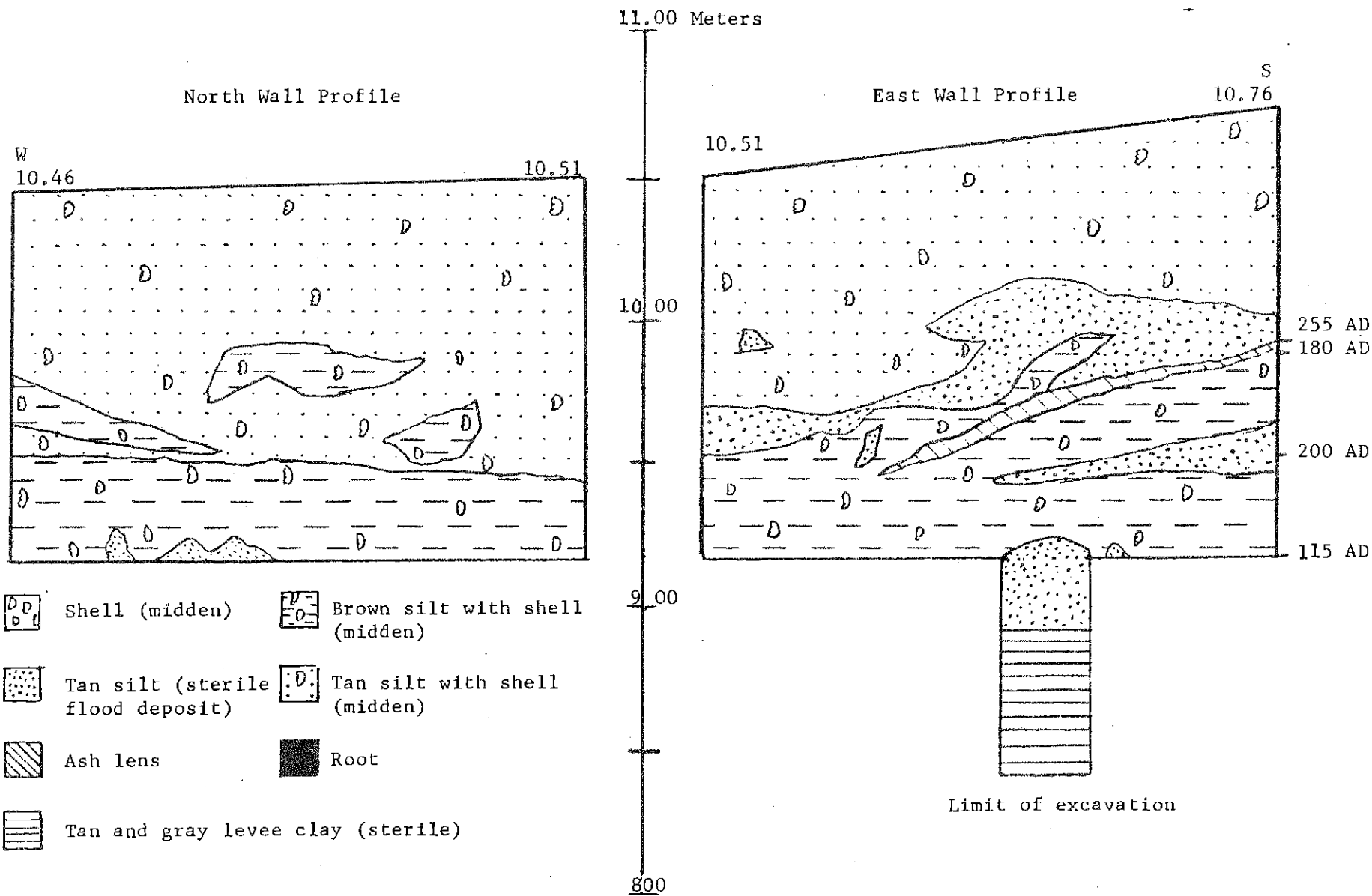
- | | | | |
|---|-----------------------------------|---|--------------------------------|
|  | Shell (midden) |  | Brown silt with shell (midden) |
|  | Tan silt (sterile flood deposit) |  | Tan silt with shell (midden) |
|  | Ash lens |  | Root |
|  | Tan and gray levee clay (sterile) | | |

Limit of excavation

8.00

COQUILLE SITE (16-JE-37) WALL PROFILES

Excavation Unit 10, Summer, 1978



Coquilles Site (16 - Je - 37)
Excavation Unit 10

- Level 1 Elevation: 10.57 - 10.47
 Ceramics: Marksville Stamped var. Troyville N = 3 A = 31.5cm²
 Marksville Stamped var. Manny N = 6 A = 27.0cm²
 Marksville Incised var. Spanish Fort N = 8 A = 40.0cm²
 Plain Ware N = 90 Plain Rims N = 8
 Faunal remains: fish, turtle, small mammal
 Modern glass and ceramics
- Level 2 Elevation: 10.47 - 10.37
 Ceramics: Marksville Stamped var. Mabin N = 2 A = 12.0cm²
 Rims Decorated N = 2 (1 cross-hatched)
 Plain Ware N = 25 Plain Rims N = 2 Bases N = 1
 Faunal remains: fish, deer, small mammals
- Level 3 Elevation: 10.37 - 10.27
 Ceramics: Marksville Incised var. Spanish Fort N = 1 A = 25cm²
 Marksville Incised var. Unspecified N = 1 A = 4cm²
 Rims Decorated N = 1 (Marksville Stamped var. Troyville)
 Plain Ware N = 22 Plain Rims N = 2
 Faunal remains: fish, deer, bird, small mammal, burned shell
- Level 4 Elevation: 10.27 - 10.17
 Ceramics: Marksville Stamped var. Newsome N = 1 A = 35cm²
 Plain Ware N = 25 Plain Rims N = 3
 Faunal remains: fish, deer, small mammal, large rangia
 Bone tools
- Level 5 Elevation: 10.17 - 10.07
 Ceramics: Marksville Incised var. Unspecified N = 1 A = 6.5cm²
 Plain Ware N = 12 Plain Rims N = 1
 Faunal remains: oyster, small mammal, turtle
- Level 6 Elevation: 10.07 - 9.97
 Ceramics: Marksville Incised var. Unspecified N = 2 A = 22cm²
 Marksville Stamped var. Newsome (?) N = 1 A = 3cm²
 Rims Decorated N = 1
 Plain Ware N = 9 Plain Rims N = 2
 Faunal remains: fish, small mammal, bird, deer
- Feature 1 Level 1 Elevation: 10.27 - 10.17
 Ceramics: Marksville Incised var. Unspecified N = 2 A = 6.5cm²
 Plain Ware N = 20 Plain Rims N = 1
 Faunal remains: fish, turtle, small mammal
- Feature 1 Level 2 Elevation: 10.17 - 10.07
 Ceramics: Marksville Stamped var. Unspecified N = 3 A = 20cm²
 Rims Decorated N = 1 (Marksville Incised var. Goose Lake)
 Plain Ware N = 13 Plain Rims N = 1
 Faunal remains: fish, deer, small mammal

- Feature 1 Level 3 Elevation: 10.07 - 9.97
 Ceramics: Marksville Incised var. Goose Lake (?) N = 1 A = 10cm²
 Rims Decorated N = 1 (Cross-hatched)
 Plain Ware N = 9 Plain Rims N = 2
 Faunal remains: fish, turtle, deer, small mammal
- Level 7 Elevation: 9.97 - 9.87
 Ceramics: Marksville Stamped var. Newsome N = 1 A = 30cm²
 Marksville Stamped var. Mabin N = 1 A = 6.5cm²
 Plain Ware N = 11 Plain Rims N = 1
 Faunal remains: fish, bird, deer
- Level 8 Elevation: 9.87 - 9.77
 Ceramics: Marksville Incised var. Yokena (?) N = 6 A = 30.5cm²
 Churupa Punctate var. Churupa N = 1 A = 4cm²
 Rims Decorated N = 1 (Notched)
 Plain Ware N = 24
 Faunal remains: deer, fish, small mammal, bird
 Perforated incisor
- Level 9 Elevation: 9.77 - 9.67
 Ceramics: Marksville Incised var. Spanish Fort N = 4 A = 25.5cm²
 Marksville Stamped var. Newsome N = 2 A = 10cm²
 Churupa Punctate var. Churupa N = 1 A = 5cm²
 Plain Ware N = 63 Plain Rim N = 3 Base N = 2
 Faunal remains: oyster, fish, turtle, deer, small mammal, bird
 Bone tools
- Level 10 Elevation: 9.67 - 9.47
 Ceramics: Marksville Incised var. Spanish Fort N = 3 A = 27cm²
 Marksville Incised var. Marksville N = 2 A = 14cm²
 Marksville Stamped var. Manny N = 2 A = 25cm²
 Marksville Stamped var. Newsome N = 2 A = 14cm²
 Marksville Stamped var. Steele Bayou N = 1 A = 2cm²
 Rims Decorated N = 2 (Marksville Vertical Incised)
 Plain Ware N = 93 Plain Rims N = 10 Bases N = 3
 Faunal remains: deer, small mammal, fish, turtle, bird, oyster
 Bone tools
- Level 11 Elevation: 9.47 - 9.37
 Ceramics: Marksville Stamped var. Troyville N = 1 A = 18cm²
 Churupa Punctate var. Churupa N = 1 A = 6.5cm²
 Rims Decorated N = 2 (Marksville Incised var. Spanish Fort)
 Plain Ware N = 44 Bases N = 2
 Faunal remains: deer, small mammal, fish, turtle, birds
 Bone tools
- Feature 2 Level 1 Elevation: 9.67 - 9.52
 Ceramics: Marksville Incised var. Goose Lake N = 2 A = 26cm²
 Marksville Stamped var. Manny N = 2 A = 17.5cm²
 Plain Ware N = 31 Plain Rims N = 2 Bases N = 2 (one corner)
 Faunal remains: deer, small mammal, turtle, fish, bird

Feature 2 Level 2 Elevation: 9.52 - 9.37

Ceramics:	Marksville Incised var. Yokena	N = 7	A = 40cm ²
	Marksville Stamped var. Troyville	N = 4	A = 25cm ²
	Churupa Punctate var. Churupa	N = 1	A = 8cm ²
	Plain Ware	N = 103	Plain Rims N = 6

Faunal remains: fish, deer, small mammal, turtle, bird

Level 12 Elevation: 9.37 - 9.27

Ceramics:	Marksville Incised var. Yokena	N = 4	A = 13cm ²
	Marksville Incised var. Spanish Fort	N = 1	A = 8cm ²
	Marksville Stamped var. Newsome	N = 2	A = 10.5cm ²
	Marksville Stamped var. Troyville	N = 1	A = 16.5cm ²
	Rims Decorated	N = 1 (Notched)	
	Plain Ware	N = 51	Plain Rims N = 3 Bases N = 3 (rectangular corner, 1 mammiform)

Faunal remains: deer, small mammal, fish, turtle, bone tools

Level 13 Elevation: 9.27 - 9.17

Ceramics:	Marksville Incised var. Yokena	N = 1	A = 10cm ²
	Marksville Stamped var. Crooks	N = 1	A = 4cm ²
	Marksville Stamped var. Unspecified	N = 1	A = 40cm ²
	Marksville Stamped var. Troyville	N = 4	A = 25cm ²
	Churupa Punctate var. Churupa	N = 1	A = 8cm ² (rim)
	Rims Decorated	N = 3 (all notched)	
	Plain Ware	N = 42	Plain Rims N = 1

Faunal remains: deer, small mammal, fish, bird, bone tools

Limit of Excavation
Sterile Levee Clay

NOTES, NEWS AND COMMENTS

Dr. Jon L. Gibson is currently engaged in three projects out of the Center for Archaeological Research, U.S.L.: 1.) Lower Atchafalaya (for which a report is available, 2.) Perceptions of Atchafalaya Basin Archaeology and 3.) Archaeology of the Challahoochee and Apalachicola Rivers.

The U.N.O. Summer Field School just completed a six week season doing Historic Archaeology on the Costa Site (160R62) on Bourbon Street. This site contained evidence for occupation well back into the French Colonial Period as well as a minor aboriginal component. The fourteen students were under the direction of J. Richard Shenkel and Richard C. Beavers.

DOTD News. The Department of Transportation and Development, Office of Highways, is in the process of relocating U.S. Highway 90 between Morgan City, Louisiana and La. Highway 311. This process involves the consideration of different alternate routes, of which the final proposed route will be selected. Coastal Environments, Inc., which is under contract with the

Department, has conducted detailed cultural resource surveys of the highway study area. CEI staff members Bob Cox and Wayne Glander conducted the surveys which included field observations, aerial observations, interviewing of local informants, and library research. The results of the surveys have not exposed any previously undiscovered prehistoric sites, but have re-discovered and delineated cypress timber industry sites within the study area. These sites include:

1. The Goodland Sawmill located at Chacahoula, Louisiana (c. 1905-1920)
2. The Goodland Community located at Chacahoula, Louisiana (c. 1905-1920)
3. The Donner Sawmill located at Donner, Louisiana (c. 1900-1920)

These sites were once part of a viable timber industry that existed in the area during the early 20th century.

CEI is also conducting a cultural resources survey of the Gramercy Bridge Alignment in St. James and St. John the Baptist Parishes, Louisiana. The survey is designed to locate and describe all cultural resources within the proposed alignment. CEI staff members Wayne Glander and George Castille discovered numerous physical remains of historic structures on Colonial Sugars property within the impact area of the proposed road. With Colonial Sugars cooperation, comprehensive mapping and testing of the site area revealed no intact foundations or midden. Material remains appear to date to about 1920. Archival research shows the area to be a part of the former Golden Grove Plantation which was in operation from about 1830 to 1895. Testing revealed no intact structures relating to this plantation.

Delta Chapter News - by Judy Reggio. The Delta Chapter is having a raffle! We are raffling a nineteen inch, black and white television set to raise money for the chapter's treasury. We plan to use the money to buy equipment and, maybe, to pay for carbon datings. The drawing will be held at our July meeting.

Work still continues at Hornsby, although we are nearing the end. Forrest Travirca and his Explorer Scouts are working on Lost Tributary in Lake Salvador, and Brian Duhe is continuing his work at the Shellhill Plantation.

Several of our members attended the L.A.S. Summer Field Workshop in Jonesville, Louisiana. These members were Dan Shipman, Charlene, Lafayette and Brian Duhe, Joan and Al Bruder, Forrest Travirca, Fred Parker, Chris Mano, Sid and Judy Reggio, Tommy Ryan, Dr. Rick Shenkel, Burt Rader, Richard Beavers and his surveying team, Tracy and Gretchen. The Field Workshop proved to be a great learning experience and was enjoyed by all.

Several new books have been added to our chapter's library, and one of our goals, this year, is to reach the hundred mark in chapter membership.

Our meetings take place on the last Thursday of every month at U.N.O., Liberal Arts Building, Room 140, 7:30 P.M. Drop in some time. We'd love to have you visit us!

COMMITTEE ON PUBLIC ARCHAEOLOGY. The Committee on Public Archaeology (COPA) of the Society for American Archaeology serves as an avenue for the exchange of information, news, and commentary concerning archaeology in the United States. The current COPA Chairman is Dena F. Dincauze of the University of Massachusetts at Amherst. The Committee is currently composed of the chairman and one representative in each state, who will serve as liaison between the COPA office and friends of archaeology in his/her state. Dr. Kathleen Byrd, State Archaeologist, has been designated the COPA liaison in Louisiana.

The Division of Archaeology and Historic Preservation has been asked to distribute copies of the COPA newsletter to interested individuals in Louisiana. In addition, the Division will distribute COPA ALERTS, which are published, as necessary, to communicate urgent information, such as requests for response to federal agency review deadlines.

The newsletter has been sent to the members of the Antiquities Commission, the LAS chapter presidents, the LAS state officials, and to archaeologists who have done contract work in Louisiana. It is hoped that this newsletter will aid in disseminating information to, and increasing communication among, the Louisiana archaeological community. Individuals desiring that their name be placed on the COPA mailing list may write to the Division of Archaeology and Historic Preservation, P. O. Box 44247, Baton Rouge, Louisiana 70804.

AMERICAN SOCIETY FOR CONSERVATION ARCHAEOLOGY. LAS members interested in the preservation and protection of archaeological resources should consider joining the American Society for Conservation Archaeology. The Society promotes educational, scientific and other activities which help promote the conservation and wise use of archaeological sites.

Members of the Society receive a bi-monthly Newsletter and the Proceedings of the Conservation Archaeology Symposium held annually at the Society for American Archaeology meetings.

The Newsletter includes copies of federal legislation, pending and passed; excerpts from the Federal Register pertinent to archaeology; comment and opinions from readers; announcements of meetings; discussions of proposed federal rule-making; items dealing with antiquities legislation enforcement, public education, techniques and methodology.

The Proceedings present longer papers on the same subjects. For example, in the 1978 issue there was an article on "Federal Government Support of Archaeology in the United States: 1946-1977."

Membership in the Society costs \$10.00 per year for individuals; \$25.00 per year for institutions (e.g., chapters). If you are interested, send your name and address and a check or money order, payable to The American Society for Conservation Archaeology to: Dr. Richard E. Ross, Treasurer
Department of Anthropology
Oregon State University
Corvallis, Oregon 97331

NEW PUBLICATIONS AVAILABLE

The Department of Culture, Recreation and Tourism and the Louisiana Archaeological Survey and Antiquities Commission recently announced publication of The Caddo Indians of Louisiana by Clarence H. Webb and Hiram F. Gregory. The report is the second published in the Anthropology Study Series and is dedicated to the late Margret Elan Drew, a chapter member of the Commission and the LAS. The report is 39 pages in length, well illustrated and is written for the general public. The publication contains an excellent summary of the Caddo Indians and their archaeological ancestors. Copies of this publication have been distributed to the various LAS Chapters and free copies may be obtained by writing Dr. J. Larry Crain, Secretary, Department of Culture, Recreation and Tourism, P. O. Box 44361, Baton Rouge, Louisiana 70804.

Publications from Southern Methodist University, Archaeology Research Program, Department of Anthropology, Dallas, Texas 75275 are as follows:

An Evaluation of Archaeological Resources at Aquilla Lake. S. Alan Skinner, Chester Shaw, Kate Huckabay, and Mary L. Bartsch, 1979. Archaeological investigations at eight sites in the Brazos River Basin of central Texas are used to construct regional settlement subsistence models for Archaic and Neo-American occupations. Research Report 118. 304 pp., 36 illus. \$6.00.

Survey and Testing in the Elm Creek Watershed Upper Colorado River Drainage, Texas. Mark J. Lynott, 1978. A survey of 3,922 acres in west central Texas located 108 sites, 15 of which were subjected to test excavation to assist reconstruction of the regional prehistory. Research Report 106. 174 pp., 52 illus. \$5.00.

Archaeological Research at the Proposed Cooper Lake, Northeast Texas, 1974-1975. Karen Doehner and Richard E. Larson, 1978. Excavation data from six sites, faunal analysis, and osteological analyses of 22 skeletons are used to examine hypotheses of prehistoric settlement in northeast Texas. Research Report 108. 190 pp., 54 illus. \$5.00.

An Inventory and Evaluation of the Cave Resources to be Impacted by the New Melones Reservoir Project, Calaveras and Tuolumne Counties, California. J. Michael McEachern and Mark Grady, 1978. A survey of archaeological and historical features in caves of central California is combined with geological, paleontological and biological research to form a unique cultural resource management study. Research Report 109. 120 pp., 21 illus. \$3.00.

A Reconnaissance Survey of the Trinity River Basin. Jeffrey J. Richner and Joe T. Bagot, 1978. Survey data for 423 sites are used together with test excavation information to construct a synthetic picture of prehistoric and historic occupation on the Trinity River of east Texas. Research Report 113. 287 pp., 89 illus. \$6.00.

Evaluation of the Cultural Resources at the Proposed Cooper Lake. Karen Doehner, Duane Peter, and S. Alan Skinner, 1978. The results of six years of survey and excavation provide a general synthesis of prehistoric occupation in the Sulphur River Valley, northeast Texas. Research Report 114. 235 pp., 37 illus. \$6.00.

An Archaeological Assessment of the Bear Creek Shelter, Lake Whitney, Texas. Mark J. Lynott, 1978. Excavations in four meters of stratified deposit at a large rock shelter in the Brazos River Valley of central Texas exposed a 4000 year sequence of prehistoric occupation. Research Report 115. 109 pp., 22 illus. \$3.00.

Archaeological Survey in Cherokee, Smith and Rusk Counties, Texas, A Lesson in Survey Methods. Thomas R. Scott, Michael McCarthy, and Mark Grady, 1978. Computer simulation is used to compare the effectiveness of several site survey methods in a heavily vegetated portion of east Texas. Research Report 116. 81 pp., 21 illus. \$3.00.

PUBLICATION NOTICE: Bibliography of the Prehistory of the Upper Texas Coast, No. 4, March 1979, by L. W. Patterson, Houston Archeological Society, Special Publication is now available. This latest of a series contains 228 entries covering a 20 county area of southeastern Texas. The cost is \$1.50 including mailing costs, and may be ordered from: John Herbert, 5935 Dellfern, Houston, Texas 77035.

An Archaeological Reconnaissance and Assessment of the Sabine River, North Shore of Sabine Lake to the Gulf Intracoastal Waterway: Cameron, Calcasieu Parishes, Louisiana and Orange County, Texas. By Richard C. Beavers. University of New Orleans Archaeological and Cultural Research Program, Research Report No. 1. 79 pp. \$5.00.

Louisiana Archaeological Society

MEMBERSHIP APPLICATION AND DUES RENEWAL

- Regular Membership () Annually \$10.00
- Associate Membership () Annually \$2.00
- Life Membership () \$100.00
- Sustaining Membership () \$300.00
- Student Membership () Annually \$5.00
- Libraries & Institutions () Annually \$10.00

PLEASE PRINT or TYPE

Name _____

Organization _____

Address _____

City _____ State _____ Zip _____

Names of Associate Members _____

Order LAS Annual Bulletin 1974 () - 1975 () - 1976 () - \$7.50 each

1977 () - 1978 () - 1979 () - \$7.50

Make check payable to: LOUISIANA ARCHAEOLOGICAL SOCIETY

Send to: Mr. William S. "Bill" Baker
Treasurer
Louisiana Archaeological Society
P.O. Box 637
Jonesville, La. 71343

NOMINATION - L.A.S. - OFFICERS

Return To:

Brian J. Duhe
P.O. Drawer B
Reserve, LA 70084

DATE: _____

I (We) would like to nominate the following person (s) for the office of L.A.S.

President Elect (Vice President)

Name	Address	Phone No.
Name	Address	Phone No.
Name	Address	Phone No.
Name	Address	Phone No.
Name	Address	Phone No.

Treasurer

Name	Address	Phone No.
Name	Address	Phone No.
Name	Address	Phone No.
Name	Address	Phone No.
Name	Address	Phone No.

Signature/Local Chapter

