



Louisiana Archaeological Society NEWSLETTER

CHARLES E. PEARSON, Newsletter Editor

COASTAL ENVIRONMENTS, INC.,

BATON ROUGE, LOUISIANA 70802

Volume 12, Number 3

Winter 1985

EDITOR'S NOTE

Normally this issue of the Newsletter is put out in mid-December in order to allow for sufficient time to return election ballots prior to the annual meetings. This year, however, I must admit I have let the date for finishing the Newsletter slip a little. Only one LAS officer's position was up for election this year and that was for President-Elect. Two names of nominees for the position were received by the LAS Executive Committee. One of these individuals withdrew, therefore, the only nominee for President-Elect is Richard Weinstein. Following the guidelines of the LAS Bylaws, however, an election must be held, either by mail or at the Annual Meeting. After consultation with the President, it was deemed appropriate in this instance to hold the election in the Business Meeting at the Annual Meeting in Covington. Some information on the nominee is provided below.

Richard is a professional archaeologist working with Coastal Environments, Inc. of Baton Rouge. A native of New York, Richard received his M.A. in Anthropology from LSU in 1975. Since he has been in Louisiana, Richard has taken an active interest in the archaeology of the state and in the LAS. He has authored a number of professional papers on various aspects of the prehistoric archaeology of Louisiana and in particular he has taken an interest in Lower Valley ceramics and the archaeology of the Louisiana coastal zone. He is a charter member of the LAS and of the Baton Rouge Chapter. As those of you who know Richard can attest, he will certainly not fail to make his opinions known concerning Louisiana archaeology or the LAS.

Everyone should have received the notification of the change of dates for the Annual Meeting in

Covington. Registration will begin on the afternoon of January 31 and the meetings will be held on February 1 and 2, 1986 at the Holiday Inn in Covington. If you have not already made room reservations for the meeting, please do so soon. Joe Manuel informs me that the motel must have your reservation early to insure a good room. Reservation information and forms have been provided in the packet already mailed to members. The Northlake Chapter is working hard to make these meetings among the best we have ever had. I urge everyone to attend. See you in Covington.

A MESSAGE FROM THE PRESIDENT

To the LAS Membership

My year is coming to an end. I have enjoyed it and thank all of you for your usual cooperation. The membership should be in store for a real barn burning President in 1986. Joe Manuel has the necessary attributes to make the LAS retain its youthful spirit and gain an even more mature mind. Richard A. Weinstein, Vice-president and the only nominee for President-Elect, will no doubt perform his duties with robust vigor. The remaining officers, executive committee, and editors have proven their unique abilities in performance of their duties in past years.

The general membership is eager as always to contribute to the further knowledge of our heritage, both prehistoric and historic. My only request for the future is please provide material for the Newsletter and Bulletin. For some members this is the only way they can enjoy our Louisiana heritage.

Joe Frank

FROM THE PRESIDENT-ELECT

We have come to the close of an outstanding year under the leadership of Joe Frank. I know you all join me in thanking him for his dedication to the LAS and for a job well done.

I hope at the end of 1986 I will have served you as well as he. I promise you that I'll do my best to keep the society moving in a positive direction. Those of you who know me well, know that I believe the success of an organization depends on enthusiastic participation by most, if not all, of the members and certainly by all officers and committee members. Our scoreboard will reflect the results of the 1986 team effort and you are part of the team.

There will be an executive committee meeting on the Friday night of our Annual Meeting-January 31, 7:30 p.m. Please have your LAS representatives prepared to present your suggestions for improving any and all aspects of our society. As a starter I would like to have your feelings on the several ideas or observations listed below: 1. An Index of our Bulletins and Newsletters could be developed this year and printed as a special issue of our Newsletter. 2. A form could be drawn up and distributed to our members which can be used to transfer ownership or custodianship of collections to the LAS, a chapter, individual or institution at any time during ones life or upon ones death. This record could be filed with the LAS. 3. A separate fund or a method of accounting within our present system could be developed to enable donors to contribute toward a special future printing of our "Second Ten Years As A Society". 4. We have a considerable amount of money tied up in Bulletins, caps, and T-shirts. We need to get our money out of these, so let's have some suggestions. 5. We need consistency in our approach to the certification program and the field school. Again, we need your ideas on a more acceptable way to accommodate our members in this area. 6. The editors of our Newsletter and Bulletin are doing a superior job but they need more material on a timely bases from you. Is there a way to motivate you to supply that material?

I look forward to seeing each of you in Covington at the Annual Meeting. Once you see the program I know you will not want to miss it.

Joe Manuel

LAS EXECUTIVE COMMITTEE MEETING

The LAS Executive Committee will meet on the Friday night of the Annual Meeting, January 31 at 7:30 p.m. at the Holiday Inn in Covington.

AWARD GIVEN DELTA CHAPTER MEMBER

The New Orleans region of Amoco Production Company has, for a number of years, offered a volunteer involvement program to its employees. The program offers sums of as much as \$1,000.00 to individuals requesting monetary assistance for the organization for which they do volunteer work. The program is designed to encourage participation within the community.

Recently, **Linda Church**, an exploration technologist at Amoco, applied for such a grant. Linda is an active member of Delta Chapter of the Louisiana Archaeological Society, serving as secretary for the chapter in 1984 and 1985. She is also active in the state LAS, serving as secretary for a two year term 1985-1986. Based on the number of hours which Linda has spent both in the field and in the lab in her work with the LAS, she was awarded the full amount and the Amoco foundation sent her a check in the amount of \$1,000.00.

The sum will be divided equally between the state LAS and the Delta Chapter to help the chapter with convention costs for the 1987 Annual Meeting which will be held in New Orleans. The chapter has endeavored to obtain a special speaker for the 1987 meeting. Convention Chairman, Bettie Pendley has corresponded with Noel Hume and he has agreed to speak to us barring any unforeseen complications.

The NEWSLETTER OF THE LOUISIANA ARCHAEOLOGICAL SOCIETY is published three times a year for the Society by Coastal Environments, Inc., Baton Rouge. Send all notes, news and other communications to: Charles E. Pearson, Editor, Coastal Environments, Inc., 1260 Main Street, Baton Rouge, LA 70802. Unless otherwise indicated, opinions stated herein are those of the Editor and do not necessarily reflect Society policy.

As an added footnote, Amoco encourages continuing active service in the community, and the grant can be applied for again next year. Amoco is just one source of such funds. Put your archaeological hours to work for all of us. Contact sources that might be in a position to provide additional financial assistance. It never hurts to try.

All of us in the LAS extend our congratulations to Linda, and a thank you to Amoco for its interest in its employees and its concern for the community.

ART EXHIBIT

A showing of Pre-Historic Indian Artifact Etchings by LAS member Lyn Fontenot-Duhe will be on exhibit from July 2 to August 16, 1986 at Antler's Gallery, 555 Jefferson Street, Lafayette, Louisiana.

Approximately 40 works will be on exhibit. The subject matter deals with prehistoric artifacts from a variety of sites in Louisiana. All of the works will be available for purchase. A wine and cheese reception will be held for the artist at Antler's on Wednesday, July 2, from 7-9 p.m. LAS members will find Lyn's work of interest and should make an effort to get by and see the exhibit.

FEDERAL GRANT MONEY FOR ARCHAEOLOGY

Federal grant money is now available through the state Division of Archaeology for archaeological study of Louisiana. This money can be used for two types of projects: those in which land is surveyed to find archaeological sites and those in which portions of a known site are excavated to determine its eligibility for inclusion on the National Register of Historic Places.

Businesses, individuals or local governments interested in having their archaeological sites assessed must provide part of the funding. For survey projects, 30 percent must be financed by the sponsor, and for test excavation projects, 50 percent of the cost must be provided by the sponsor. Generally, the sponsor's portion will be more than \$2,000.00.

"During 1986, we are hoping to work with parish police juries, corporations and private landowners

who want to know about the sites on their land. Through this program, they will also be contributing to an understanding of Louisiana's cultural past," said Robert DeBlieux, State Historic Preservation Officer.

The Division of Archaeology can provide additional information about how to sponsor a project and how to find an archaeologist qualified to do the work. Interested readers should write or telephone Steven Smith at the Division of Archaeology, P. O. Box 44247, Baton Rouge, LA 70804, (504) 922-0368.

MID-SOUTH ARCHAEOLOGICAL CONFERENCE CALL FOR PAPERS

The seventh annual meeting of the Mid-South Archaeological Conference will be held in Natchez, Mississippi on May 31-June 1, 1986. The topical area will be "The Paleo-Indian Period-Fluted Point to Dalton". Sam Brookes, Conference Chairman, has provided the following information:

"You are invited to present a paper relating to Paleo-Indian in the Mid-South. At the Sixth Annual Meeting at Starkville some concern was expressed as to what constitutes the Mid-South. Gerald Smith and David Dye have suggested the area of distribution of the Commercial Appeal. The Great Plains are not in the Mid-South, and neither was the Bering Strait Land Bridge, but don't be hesitant about submitting papers. Paper titles and abstracts must be submitted to the chair by March 30. Please state needs for projectors, etc. Bring publications to sell as the Mississippi Department of Archives and History, Grand Village of the Natchez Indians, will supply personnel to handle sales.

Accommodations: Information will be forthcoming. Natchez has a variety of restaurants, bars, and more historic homes than you can possibly look at. Tours of the Grand Village will be given and the Emerald Mound and several other famous sites are within a few minutes' drive.

Conference Chairman:

Sam Brooks
Environmental Section
Vicksburg District Corps of Engineers
P. O. Box 60
Vicksburg, MS 39180
Phone: Home - (601) 634-0675
Office - (601) 634-5442

MEETINGS

Louisiana Archaeological Society

Annual Meeting

January 31, February 1-2, 1986

Holiday Inn

Covington, Louisiana

Caddo Archaeological Conference

28th Annual Meeting

March 14-15, 1986

Camelot Hotel, Little Rock, Arkansas

Program Chairman: Dr. Frank Schambach, P. O.

Box 1381, Southern Arkansas University,

Magnolia, AR 71753

Society for American Archaeology

1986 Annual Meeting

April 23-26, 1986

Clarion Hotel, New Orleans, Louisiana

Program Chairman: Robert Neuman, Museum of

Geoscience, Louisiana State University, Baton

Rouge, Louisiana 70803

Seventh Annual Mid-South Archaeological Conference

May 31-June 1, 1986

Natchez, Mississippi

Topical Data: The Paleo-Indian period: Fluted
Points to Dalton

Conference Chairman: Sam Brookes,
Environmental Section, Vicksburg District Corps
of Engineers, P. O. Box 60, Vicksburg, Mississippi
39180.

PUBLICATIONS

A Field Guide to Stone Artifacts of Texas Indians,
\$11.95 (paperback), \$19.95 (hardback). Texas
Monthly Press, P. O. Box 1569, Austin, Texas
78767.

DUGOUT CANOE MANIA

By Brian Duhe'

Within a few weeks after the reported find of a prehistoric dugout canoe in Lake Salvador Wildlife and Fisheries Agents (Perlstein, 1985, Sheldon 1985) I reported to the State Archaeologist office, the location of a second dugout canoe. This dugout was found in the same general area as the first canoe reported by the Wildlife and Fisheries agents. The canoe found by the Wildlife agents was manufactured from a cypress log, and featured a defineable prow and slightly raised stern. Several areas inside of the dugout are blackened or burned indicating that the builders of the canoe apparently used a method that entailed building small fires on it and then scraping away the char. The dugout which I found was smaller, being approximately twelve feet long and two feet wide (Figure 1). This dugout, also made of cypress, has several charred areas inside of each end and is identical in form to the larger dugout found by the agents. At present the plans are for Wildlife agents to recover the second dugout and have it radiocarbon dated. The dugout will eventually be put on display for viewing by the general public. This makes the third dugout discovered in Louisiana recently; one on the Red River in North Louisiana which dates to about 1050 AD, plus the two South Louisiana coastal areas. Without a doubt many others remain to be found or reported.

References:

Perlstein, M.

1985 - Canoe may be 2000 years old - Times
Picayunne Newspaper - Section F, Sunday,
August 18, 1985.

Sheldon, Bob

1985 - Lake Salvador Yields a Secret.
Louisiana Conservationist July/August 1985
37:4:14-15.

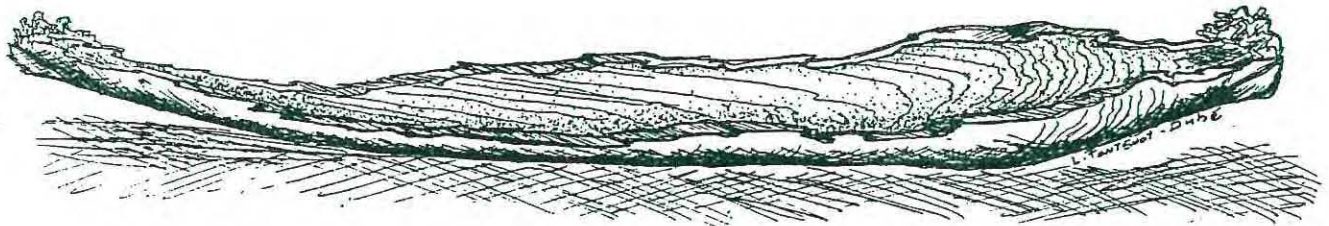


Figure 1. Dugout canoe from Lake Salvador area.

MAJOR MOUND SITE MAPPED

This fall LAS members David Kelley, Charles Pearson and Richard Weinstein visited and made a contour map of a large, prehistoric mound site in East Baton Rouge Parish. The site, known as the Kleinpeter Mounds, is located on the bluffs of the Prairie Terrace overlooking the Mississippi River floodplain at the juncture of Bayous Manchac and Fountain. Six earthen mounds are visible at the site. Four of these seem to be arranged around a plaza while the other two are located to the northwest of the plaza group (Figure 1). Two of the plaza mounds, (Mounds B and D) are definitely pyramidal or flat-topped. While some of the other mounds may also have been pyramidal, their original shape cannot now be discerned. The largest mound in the group, Mound B, is about 80 meters in diameter and 3 meters in height. This mound appears to have a ramp leading to the east into the plaza. While the four mounds around the plaza are located close to the cardinal points of the compass, their placement may have been influenced by the site-specific topography.

Aboriginal ceramics from the site indicate occupation from the Tchula through Mississippian Periods. Additionally, historic ceramics consisting of the eighteenth-century types creamware and French faience were found. The

major occupations at the site seem to have been during the late Marksville, Coles Creek, and early to mid Mississippian Periods. The Kleinpeter Mounds represent the largest mound complex known in this area of Louisiana and without a doubt it was a major center during the late prehistoric period. Its position adjacent to Bayou Manchac, a major historic, and probably prehistoric, trade and travel route, likely contributed to its importance.

The Kleinpeter Mounds site has been known to archaeologists for many years but has received very little attention. One of the reasons for this is that the previous owners were very protective of the site and it was rarely visited by archaeologists and never considered endangered. In 1936 James Ford made a rough sketch map of the site in which he noted only two mounds at the site; the two pyramidal mounds around the plaza. In the 1960's, some minor test excavations were conducted at the site by the Junior Archaeological Society of Baton Rouge under the direction of J. Ashley Sibley. Also in the 1960's, Carl Kuttruff, then a graduate student at LSU, made a contour map of the site in which he indicated the presence of 4 mounds. Recent clearing of the underbrush around the site has allowed us to recognize the other mounds at the site not seen by the earlier researchers.

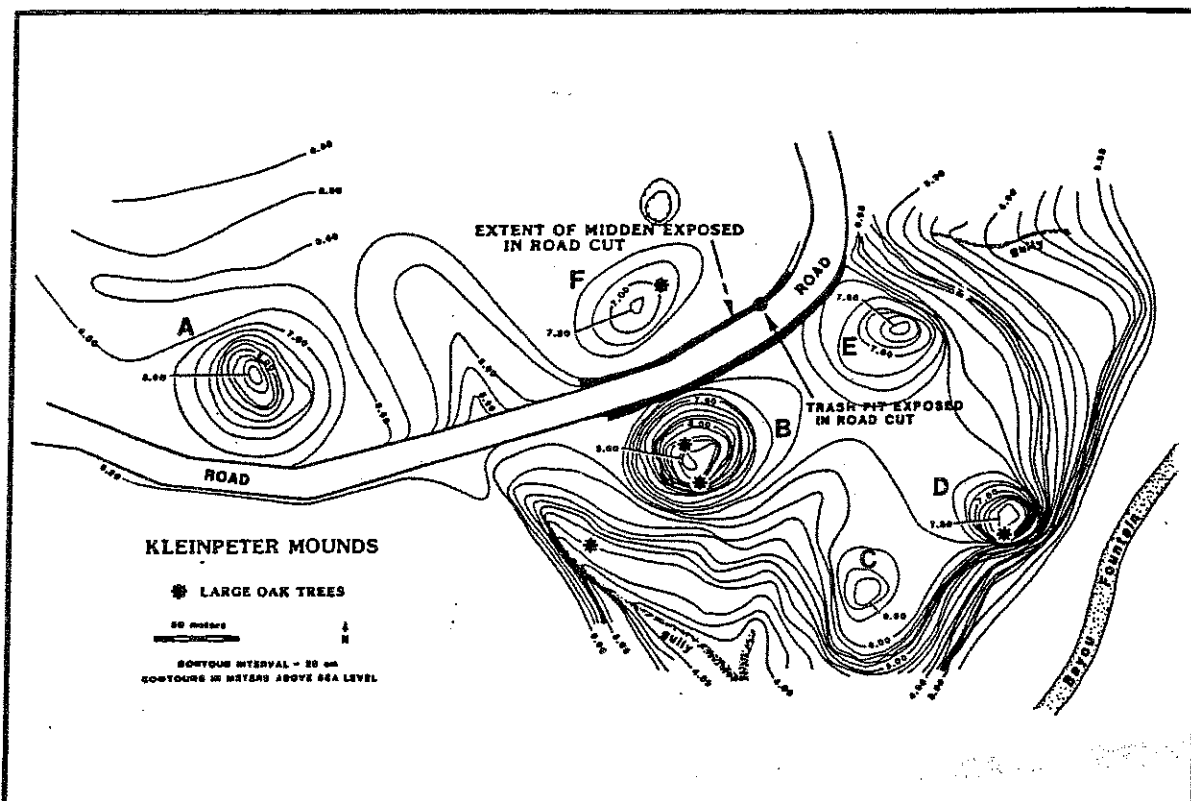


Figure 1. Map of the Kleinpeter Mounds site.

Recently the property on which the Kleinpeter Mounds are located was sold and is now being developed as a golf course and residential area. The developers are cognizant of the importance of the site and have taken some effort to minimize damage during the initial development. For instance, as can be seen in the accompanying Figure, they avoided the mounds when they placed their road through the site. The road did, however, cut through an extensive midden area which was several feet thick in places. The site is currently unprotected by state or Federal laws and what will happen to it once the property is lotted and sold is unknown. It is hoped that the new owners will make some effort to preserve or study this extremely important cultural resource.

CHAPTER NEWS

Delta Chapter Reported by Bettie Pendley

Hurricane Juan has slowed down work at the Three Oaks Plantation site. Planking, which may be from a cistern, has been unearthed, but further excavation will not be possible until the water recedes. A variety of glass has been found, including medicine bottles, Schnapps and bitters bottles, stem ware, pressed glass, and lamp chimney fragments.

The St. Bernard survey has been completed and the report is being written.

Members of Delta Chapter are presently working on over 6,000 ceramics uncovered in the first of three excavations at the Hermann-Grima House in the French Quarter. The present house was constructed in 1831, but other structures were located on the site prior to that time. Kirk Diez, who has made a special study of early New Orleans ceramics, noted that the sherds were extremely diversified. They include a large amount of 18th century faience, decorated not only in the common blue and white patterns but also in multi-colored rural architectural scenes. Other early ceramic types represented are gaudy Dutch, mochaware, and transfer printed wares.

Recent chapter programs have included an illustrated lecture by Dr. Dan Helan of Tulane University and George Bey on Ek-Balam, a Mayan site in the Yucatan; a Halloween presentation by "Skip" Newfield on "Tombstones in New England"; and a talk by Dr. Wyllys Andrews, also of Tulane, on his work at a Mayan site.

Delta Chapter meets in Room 1053 of the Science Building at the University of New Orleans at 7:30 p.m. on the last Thursday of the month, except for November and December, when meetings are held on the third Thursday. invite you to attend.

Imperial Calcasieu Chapter Reported by Joe Frank

A Spanish ship which wrecked off the Cameron Parish coast was the subject of the September chapter meeting. Kenneth Duplechain discussed the Spanish ship "Corazon de Jesus y Santa Barbara" which went aground in 1766.

Dr. Margaret Wilhite was the guest speaker for the October meeting. She presented a slide presentation of Mayan ruins taken while studying in the area.

Ted Hammerschmidt, an engineer in the environmental office at Ft. Polk spoke at the November meeting. Hammerschmidt discussed the development of cultural resources at Ft. Polk and presented slides of excavations conducted at the fort.

Northeast Louisiana Chapter Reported by George Heller

At the September meeting, the film of an interview with Manning Durham was shown. The interview was made by KTVE-TV and had been aired in June on their "AM" morning show with Mayor Dave Norris.

Also at the September meeting Dr. Glen Greene presented a brief report on the NLU Field School excavations at Poverty Point.

Northlake Chapter Reported by Steve Sieracki

At the October meeting the officers for 1986 were elected. They are:

President: Jack Moore
Vice-President: Patty Young
Treasurer: Joy Heintz
Recording Secretary: Wuanita Talley
Corresponding Secretary: Steve Dittrich
LAS Representative: Steve Sieracki

Northwest Louisiana Chapter

The speakers for the last part of the year have continued to be both entertaining and informative. The August meeting was treated to a presentation by Dale Greenwell on his work in coastal Mississippi. Dr. George Riser spoke to the September gathering about information the chapter has gleaned from the last year's excavations and its relevance to Louisiana archaeology.

Techniques for excavating human skeletal material were discussed in a lecture by Dr. Elizabeth Watts of Tulane University in October. The November meeting featured Fr. Dominic Breaux. Fr. Dominic spoke on his work on the Abbey property in Covington. December will be an interesting meeting. Paula Johnson will discuss her research of the contact period tribes in the Florida Parishes.

The excavation of the Shadow's mound continues. A trench through the mound is nearly complete. This prehistoric/historic mound will be the subject of a paper given at the LAS Annual Meeting in 1986.

At the September meeting, Drs. Frank Schambach and Ann Early presented a program entitled "Late Caddoan Cultures" using one of the Pictures of Record archaeological slide sets. In October, J. L. "Buddy" Spiller from the Imperial Calcasieu Chapter provided a demonstration on flint napping. In November, David Jeane, gave a talk and slide presentation on the Arkansas Archeological Society's 1985 Summer Dig at the Holman Springs site. Holman Springs is a Caddoan salt making site located in southwest Arkansas.

Claude McCrocklin and several members undertook a survey of the Cypress Lake shoreline in October. The lake has been lowered, and the group found and relocated 14 sites during their one-day trip. The material recovered will be denoted to the Park Museum.

MEMBERSHIP APPLICATION AND DUES RENEWAL 1986

Regular Membership	()	Annually \$15.00
Associate Membership	()	Annually \$2.00
Life Membership	()	\$100.00
Sustaining Membership	()	\$300.00
Student Membership	()	Annually \$5.00
Libraries & Institutions	()	Annually \$15.00

PLEASE PRINT OR TYPE

Name _____

Organization _____

Address _____

City _____ State _____ Zip _____

Names of Associate Members _____

Back Issues of LAS Bulletins \$10.00

#1 ()	1974	#5 ()	1978
#2 ()	1975	#6 ()	1979
#3 ()	1976	#7 ()	1980
#4 ()	1977	#8 ()	1981

LAS 10th Anniversary \$7.00

T-Shirts S () M () L () XL ()
Baseball Caps ()

Send payment to:

Brian J. Duhe, Treasurer
LOUISIANA ARCHAEOLOGICAL SOCIETY
P. O. Drawer G
Reserve, LA 70084

LOUISIANA ARCHAEOLOGICAL SOCIETY

1260 MAIN STREET
BATON ROUGE, LOUISIANA 70802

Nonprofit Organization
U.S. Postage
PAID
Baton Rouge, LA
Permit 1118

Jon L. Gibson
120 Beta Dr.
Lafayette, LA 70506

LOUISIANA ARCHAEOLOGICAL SOCIETY NEWSLETTER

