

Louisiana Archaeological Society

NEWSLETTER OF THE LOUISIANA ARCHAEOLOGICAL SOCIETY

Vol. 4, No. 3



July, 1977

IN THIS ISSUE:

Contract Archaeology: An Editorial ... 1; The Springhill Airport Sites ... 3; Some Bird Symbolism from Mississippi ... 7; A Stone Effigy from the Truman Rushing Site ... 8; Notes from the Corresponding Secretary ... 9; From the State Archaeologist's Office ... 10; Announcements ... 11; Sources for Out-of-Print References ... 12; Current Archaeological Research ... 13; Chapter News ... 19; Tribal News ... 21; LAS Membership List ... 22.

CONTRACT ARCHAEOLOGY: AN EDITORIAL Clarence H. Webb Assistant Editor, LAS

Your Assistant Editor has recently had the opportunity of studying various aspects of contract archaeology, first as a member of a committee appointed by the Louisiana Archaeological Survey and Antiquities Commission to review the standards for cultural resource surveys proposed by the Louisiana Archaeological Council, and more recently as one of two outsiders asked by the Arkansas Archaeological Survey to review the research design and conduct of fieldwork for archaeological investigations of a 54 square mile tract antecedent to lignite mining. Out of these experiences I have developed a few thoughts, not profound but possibly pertinent to the future of archaeology. Cultural resource surveys constitute a large part of field investigations now and will increase; lignite strip mining is just reaching

The newsletter of the Louisiana Archaeological Society is published quarterly by the Society from its editorial office at the University of Southwestern Louisiana, Department of Social Studies, Lafayette, LA 70504. Send notes, news, and articles to Dr. Jon Gibson, LAS Editor (at the above address). Unless otherwise indicated, opinions herein are those of the editor or other individuals and do not necessarily reflect Society policy.

us and will be a booming industry. It differs from most other activities for which archaeological surveys are needed in that it is totally disruptive of surface and subsurface residues.

I approach this question as I would as a member of the State Commission (1) from the standpoint of the public good, since the public is expected to benefit from the industrial development or the public works program (highways, navigation, drainage, lakes, airports, sewage disposal, etc.) which buys the survey; the public is expected to benefit from the cultural resource studies which the archaeologist makes; and the public, one way or another, will pay for the process; (2) from the standpoint of the purchaser of services, who is entitled to secure reasonable clearance or logical mitigation, and should not be expected to endure unnecessary delay or unreasonable expense in the form of duplicative effort, unrelated research or incomplete, unskilled studies that may have to be repeated in a few years; (3) from the standpoint of the regulating agencies, state and federal, which have the unenviable jobs of supervising and regulating both the purchaser and the contractor for services, of establishing rules and regulations, of seeing that they are abided by, and of assuring the public that it gets the kind of cultural resource development--as well as industrial or economic resource development--that it is paying for; and (4) from the standpoint of the archaeologist, as an individual and in his organization (state survey, university, private firm), who has a great opportunity (jobs, expansion of departments and training programs, study-related research, public professional recognition) but also a great responsibility.

The principle that history and its extension, archaeology, are public cultural resources is well established. In the instance of archaeology, where the storage of history is in the ground or under the waters, this principle has been expressed in the laws that require avoidance or development of the cultural resources when the land is to be altered, where either public lands or public funds are involved, or when underwater resources are approached. Through education the voluntary extension of this concern to private lands and private companies is slowly increasing.

The public and the purchaser must know, however, that archaeological surveys and studies are not simply artifact harvesting processes. Site location and salvage excavation cannot take the place of development of the history of man's presence, his use and his adaptation to the area, his relationship to its resources, his success or failure to develop those resources, his social organization and development. Present day archaeology is attempting to produce research designs and field methods which will give answers of this kind.

The archaeologist realizes and the purchasers of archaeological services, as well as the public, must know that this is not an exact science, that it deals with an incomplete record of man's presence and activities, that even the partial record may be obscured by plants, streams and overlying soil, and that a total and exact answer cannot be assured. But the archaeological organization and the individual must not use this as an excuse; he must strive to improve his skills and constantly reassess his techniques. Who knows,

for example, whether 20-30 meter transects of surface search or shovel testing along one-mile survey lines is adequate, excessive or totally inadequate in large surveys and over varying terrain and in diverse ecological zones, as a screening or predictive maneuver? Should shovel tests be at 30 or 20 or 10 meter intervals and how should these intervals be varied with habitation probability estimates? When should borings be substituted for shovel testing and how deep need they be? Are randomized tests or more intensive testing in high probability zones (a subjective procedure) or a combination of these methods desirable and under what circumstances? The answers to these and other questions will only come when many people work together and regularly check on results. Sooner or later the ultimate tests must come, of checking on assessments and predictions and hypotheses on which he bases his methods, by arranging or insisting that archaeological studies be made after the standard surveys are finished and along with land clearing or altering, to see how adequate his methods are. Not easy, but who said that archaeology had to be easy?

Finally, much thought and effort should be expended toward using the skills and enthusiasms of nonprofessional archaeologists, where these are adequate or can be made adequate by training. For the amateur, this would involve the willingness to improve those skills and to hold the enthusiasms within the bounds of demonstrated capability. There is a big job ahead and all of us need to prepare for it.

THE SPRINGHILL AIRPORT SITES,
J.C. MONTGOMERY I (16WE32) and II (16WE33)
Clarence H. Webb and David R. Jeane

Between February and May, 1977, the authors conducted an archaeological survey of an 186 acre tract for the Springhill Airport Expansion Program. The area is in the extreme northern end of Webster Parish, along the eastern margin of the Montgomery terrace where it drops off to form the western escarpment of the Dorcheat lowlands, and where no previous archaeological survey had been made. We believe that our preliminary findings will be of interest to many of our readers because the situation is probably repeated hundreds of times in those parts of the state where upland terraces adjoin stream lowlands to form physiographic and ecological contact zones, especially at junctional angles where lateral creeks flow into the valley. Repeated prehistoric occupations and multicomponent sites are to be expected and looked for.

The surveyed tract is a long rectangle, extending 7100 feet (1 1/3 mile) N-S around the present airport, 3 miles east of Springhill and only 2 miles south of the Louisiana-Arkansas line. The Montgomery terrace is about 200 feet above sea level and fingers off eastward into the southward flowing Dorcheat Bayou lowlands in rounded knolls that are between 10 and 20 feet in elevation. At the south end of the survey tract Braley Creek flows

eastward into Dorcheat, less than a mile away. Two terrace knolls at the valley junctions are between 100 and 200 meters from the present creek but closer to relict stream scars. The sites are in pasture land and have never been cultivated deeply.

Pertinent ecological factors include annual rainfall of about 50 inches, sandy topsoil of 10-20 cm thickness, orange-red clay subsoil, only fair fertility, pine-oak-sweetgum cover on the terrace, and oak-hickory-hawthorn-cypress in the lowlands, moderate numbers of pecans, berries, wild plums, haws, persimmons, crabapples, cane, water lilies, cattails and a variety of tubers. Seed potentials include chenopodium, pigweed, ragweed and marsh elder. The faunal communities are varied: animals, fish, reptiles, molluscs (mussel, snail), migratory and resident birds; probably the chief prehistoric meat resources were deer, squirrel, rabbit, opossum, raccoon, bear, turtle, alligator, catfish, buffalo-fish, garfish, turkey, woodduck, crane and other waterfowl. To date the midden has shown hickory nut, deer, mussel, turtle, turkey or crane and smaller bird remains.

Excavation to date has been largely at Montgomery I, where a black midden oval is about 20 x 30 meters in extent. We have been joined in the excavations by Anne Jeane and several volunteer friends, including Jim Montgomery (son of the owner and Editor of the Shreveport Times Editorial Page), Charlotte Burrows and Elaine King, feature writers for the Times. Charlotte wrote a feature article about the excavations and made a number of excellent photographs available to us. 2-meter squares have been used and soil removed by natural zones: 10-12 cm of black sandy midden, 5-7 cm of mixed soil with penetrations from above, then orange-red sandy clay to 25-30 cm total depth, followed by sterile red clay.

Ten squares have been worked, one to 60 cm to determine soil layers and artifact depths, the others through the first or second zones, in an attempt to pick up house outlines before complete excavation. Post molds have been found but no definite outline. Features have included 2 large trash pits; deposits of clay, daub, and charcoal just below Zone I; activity areas where projectile points, preforms and flakes were numerous; and innumerable gopher runs. Artifacts have averaged about 800 per square, almost equally divided between pottery sherds and lithics, with small amounts of bone, shell, daub and charred hickory nut fragments.

Nearly half of the approximately 300 sherds per square are thumbnail or smaller in size. There are few concentrations, except for moderate numbers in the trash pits. The ceramic is clay or clay-grit tempered and relatively thin, averaging 5-6 mm. Two to 3 percent is bone tempered, no shell tempering. Shallow bowls, bottles, jars and deep or recurved pots, usually with narrow flaring rims, have been recognized; carination of shallow bowls is frequent; adornos and strap handles are missing. Pottery types (Fig. 1) are: Maddox, Glassell and Hickory Engraved; Pease Brushed-Incised and Bossier (Plaquemine) Brushed; Sinner Linear Punctated, Pennington Punctated-Incised, Wilkinson Fingernail Punctated and Hollyknowe Ridged Pinched; Belcher Ridged; red filmed plain and many incised sherds, which probably include Hardy, Dunkin and Kiam Incised types. About 60% of the sherds show decoration.

Most of the approximately 500 lithics per square are flakes, unworked pebbles, cobbles, and hematite or sandstone fragments. There are cores, bifaces, hammerstones, abraders, debris and debitage, showing that much stone working went on at the site. Only 38 of 750 flakes were tools or used flakes; most are decortication flakes, thinning flakes and a few eclat de taille, or sharpening flakes. Materials are local small pebble cherts, petrified wood, hematite and sandstone; 20-25 percent are novaculite or quartzite, which were available in Ouachita mountains quarries 70-80 miles north, and also in stream pebbles, so that some of this could be local. Most of the flakes were less than 1.5 cm in greatest dimension (60%); the screening was with 1/4 in. mesh. Finished chipped stone tools were 26 arrow points and point fragments, the types (Fig. 2) almost equally Bassett (pointed stem) and Colbert or Ashley (expanded stem).

This is a small Caddoan occupation of the Bossier period, probably at about A.D. 1250 - 1300, presumably representing one extended family, self-contained, using local materials and making their own tools and pottery. We also assume that they combined maize-squash-beans horticulture with the fairly abundant natural resources.

Earlier occupations on the same site are attested by the finding of one Evans and one Gary dart point (Fig. 3), 3 lamellar blades, large side and end scrapers, large preforms and one beautiful snub-nose end scraper made of exotic mottled waxy chert. There has been no good vertical or horizontal separation of these Archaic materials from the Caddoan artifacts.

The Montgomery II site is helpful in this regard. In the surface collection and the one 2-meter square there are no Caddoan pottery or lithics, there is no black midden, and there are no post molds or charred wood fragments. There are, however, 12 thicker plain pottery sherds (6-8 mm), clay-grit to sandy temper, much like Bellevue or Lowland Fourche Maline sherds of this area and southern Arkansas. Lithic residue consists of hematite and sandstone lumps, a dozen pieces of debris and debitage, 2 cores (3 cm), 35 flakes (35% novaculite), a large biface and a large core scraper, 3 flake tools (1 notch, 2 transverse end scrapers), 2 thin Gary dart points and--mirabile dictu--a Dalton point found 5 cm from the surface (Fig. 3). The tentative conclusion is that this site, 200 feet (61 m) north of Montgomery I, was occupied briefly by Bellevue people at about 0 - 300 A.D. They made pottery with some similarity to Marksville, but mostly plain, and used Gary points with the atlatl-dart. It was also visited by at least one Dalton hunter.

High terrace margin near abundant water, mixed ecological zone with good--not extravagant--natural resources, repeated visits or camps by late Paleo and Archaic groups, one early pottery making band, and one Caddoan horticultural family residence; not a bad hilltop.

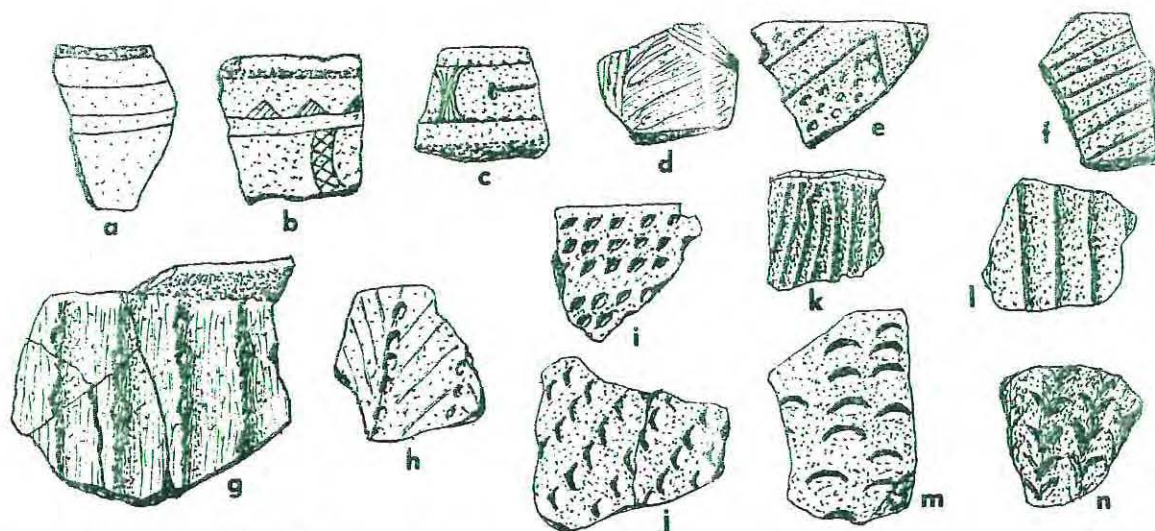


Fig. 1. Potsherds from Montgomery I. Types: a, Hickory Engraved, b, Maddox, c, Glassell Engraved; d, Bossier Brushed; e, Pennington P.-I.; f, diagonal incised; g, h, Pease Brushed-Incised; i, j, Sinner Linear Punctated; k, l, Belcher Ridged; m, Wilkinson Fingernail Punctated; n, Hollyknowe Ridged Pinched.

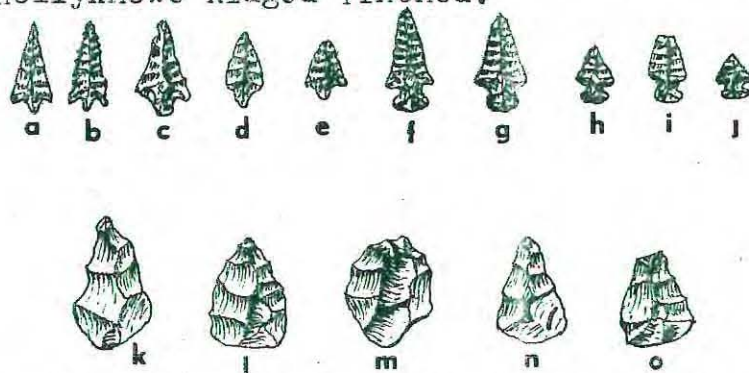


Fig. 2. Projectile points and preforms from Montgomery I: a-e, Bassett type; f-j, Colbert or Ashley type; k-o, preforms, bifaces. Scale for Figs. 1-3: 1/2.

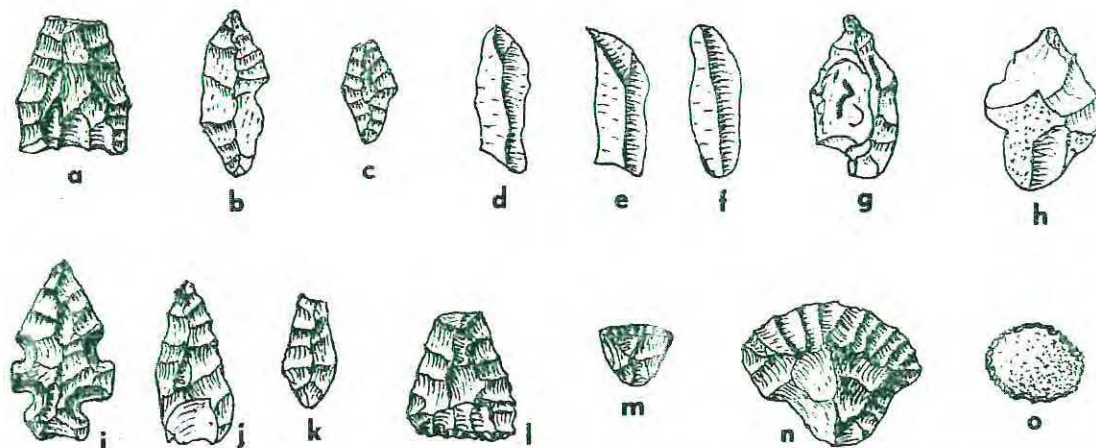


Fig. 3. Pre-Caddoan lithics, Montgomery I and II. a, Dalton point; b, c, Gary points; d-f, microflint blades; g, h, preforms, Gary?; i, Evans point; j, k, broken, probably Gary type; l, biface; m, "thumb-nail" end scraper; n, transverse end scraper; o, cortex cap scraper.



Fig. 4. Montgomery I site: Webb pitching, Jeane catching.

Photograph by Lee Shively, courtesy the Shreveport Times

SOME BIRD SYMBOLISM FROM MISSISSIPPI
John Connaway

In the April issue of the Newsletter (Vol. 4, No. 2, p. 13), Clarence H. Webb discussed bird symbolism in Poverty Point culture. I have recently illustrated several apparent bird representations thought to be of Middle to Late Archaic or Poverty Point origin (Connaway, 1977). Specimen A, Fig. 1, from Quitman County, is an "owl sitting on a stump" effigy bead with longitudinal perforation. Specimen B is a laterally drilled pendant from Oktibbeha County, Mississippi. It could be interpreted to be any of several forms. Specimens C and D were found in Lawrence County in 1875 and were illustrated by Charles Rau (1878: Fig. 13, 14). They are not drilled and appear to be incomplete bird effigy beads. Specimen E was found in Hinds County by Johann Rush, editor of Treasure Found Magazine. It is longitudinally drilled and is very similar to the "owl on a stump" form of Specimen A. Specimens A through D are described in The Denton Site (Connaway 1977). Specimen E will be described in a forthcoming issue of the Louisiana Archaeology.

Bibliography

- Connaway, John M.
1977 The Denton Site: A Middle Archaic Occupation In The Northern Yazoo Basin, Mississippi, (unpublished manuscript) Mississippi Dept. of Archives and History.
- Rau, Charles
1878 "The Stock-in-trade of an Aboriginal Lapidary", Annual Report of the Smithsonian Institution for 1877, Washington, D.C.

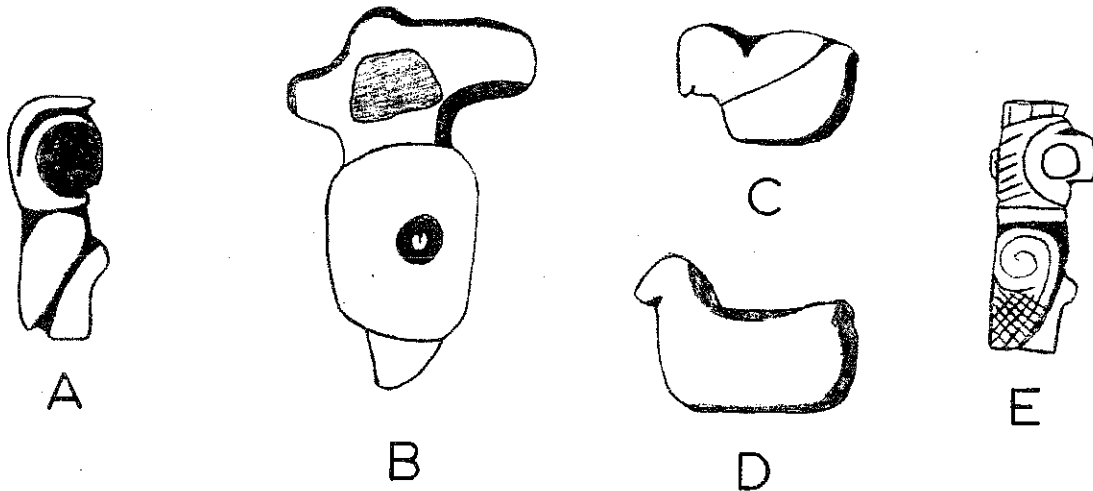


FIG. 1

A STONE EFFIGY FROM THE TRUMAN RUSHING SITE,
RICHLAND PARISH, NORTHEASTERN LOUISIANA

Jon L. Gibson

University of Southwestern Louisiana

During the course of an archaeological survey of Big Creek in the summer of 1976, a stone effigy was discovered at the Truman Rushing site near Archibald, Louisiana. It was found by Keith Sawyer, a local collector, while assisting a field crew from the University of Southwestern Louisiana in making a surface collection from the site. The effigy is now in the Sawyer collection, and I am grateful to Mr. Sawyer for his cooperation in allowing the specimen to be thusly recorded.

It is difficult to determine what the effigy is supposed to represent (Fig. 1); suggestions have included most zoomorphic forms from bear to frog. I personally favor the latter, because of the prominent role of the frog in Lower Mississippi Valley iconography and myth.

The specimen is made of an unidentified dark gray green mineral. The eyes are represented by bulbous ovals raised in bas relief on either side of the head. The mouth is depicted by a single engraved line around a blunt apex. The body is a slightly flattened cylinder, and the entire effigy is solid and well polished. It is about 2.1 inches long and about 1.0 inch in mid-diameter. It has no holes for suspension nor is there evidence of any attempt to convert the effigy into a pipe. It seems to represent a finished object of undetermined function.

The effigy was a surface find. Cultural attribution is uncertain since the Truman Rushing site has multiple components. Transitional Paleo-Indian, middle and/or late Archaic, Troyville, and Plaquemine culture periods are present. However, the major component is a middle to late Archaic base camp. Pitted stones, mortar fragments, pebble hammerstones, flake cores, debris and debitage, flake tools (burins, backed pieces, denticulates), bifaces in various stages of technological production, dart points (Wells, Kent, Mohriss, Almagre, Hale, Lange), and a geniculate seem to constitute the artifactual inventory of this component. The Plaquemine component is represented by arrow point preforms and reject forms as well as complete points (Catahoula, Colbert) and a few undecorated potsherds. Troyville representation is indicated by a single potsherd, Churupa Punctated, var. Thornton, and the transitional Paleo-Indian component is indicated by a San Patrice, var. St. Johns, dart point and perhaps some of the flake tools and debitage and debris.

Though of uncertain cultural derivation, I would mention that the frog motif is a usual Plaquemine trait, possibly because of the association of the amphibian with rain and of rain with agriculture, the Plaquemine economic mainstay. On the other hand, the manufacture of artifacts via grinding and polishing was a normal late Archaic craft, and the effigy could just as easily have been produced by a skilled Archaic artisan.

Such unshureties are common in archaeology; they are not to be regretted, nor should they keep us from acting like scientists. They keep our discipline viable, interesting, and romantic. Long live the unknowns for they are what make archaeology an activity that can be participated in by the trained and the untrained, the skilled and the unskilled, the old and the young, and by anyone who has an interest in what has gone before and an imagination to keep pace.

(EDITOR'S NOTE: A comprehensive report of the survey work mentioned by Gibson has been sent to the U.S. Army Corps of Engineers, Vicksburg District. With Corps approval, the monograph will soon appear as Report No. 3, USL Center for Archaeological Studies).



FIG. 1. "Frog" Effigy From Truman Rushing. Top, side, front, and pictorial views.

NOTES FROM THE CORRESPONDING SECRETARY
Brian J. Duhe

LAS Speakers Bureau-Local Chapter Speaker Exchange Program. In Vol. 4, No. 2 of the LAS Newsletter, Dr. C.H. Webb announced that the LAS is attempting to organize a Local Chapter Speakers Exchange Program and/or a Speakers Bureau to provide local LAS chapters with a listing of speakers who would be willing to address local LAS chapters on subjects dealing with Louisiana prehistory and history. Since that announcement I have mailed out a detailed letter explaining the program to all local LAS chapter presidents and to over forty potential speakers. Thus far I have received only one reply. Although I did not set a deadline for returning the LAS Speakers Bureau questionnaires, I would like to be able to compile a Speakers listing by August 1, 1977. This should be an interesting and rewarding program. Send in your questionnaire today.

LAS Bumper Sticker Slogan Contest. So far I have received seven (7) slogans for the LAS Bumper Sticker Slogan Contest. Remember the winner will receive a free year's membership in the LAS. Send in those slogans now. We have quite a few good ones already. Judging will take place soon.

LAS Membership. So far this year we have mailed out over 350 dues reminder letters to past LAS members from 1974-76 who have not paid their dues. We have also corresponded with 55 Institutional Libraries, 43 Academic Libraries and 64 Public Libraries, inviting them to become members of LAS. The response has been encouraging. We have picked up a few new members and have had some of the old members rejoin. If you have not paid your LAS dues yet, send them in to Bill Baker, LAS Treasurer, now. (P.O. Box 637, Jonesville, LA 71343).

LAS Executive Committee Meeting. We are asked by President Woody Gagliano to announce that the Executive Committee meeting, formerly scheduled to be held during the summer LAS Workshop, has been rescheduled to meet on September 10th, in Alexandria, the exact time and place to be announced later.

FROM THE STATE ARCHAEOLOGIST'S OFFICE
Debbie Woodiel, Reporter

On May 3, 1977, Dr. William G. Haag resigned his positions as State Archaeologist of Louisiana and Chairman of the Louisiana Archaeological Survey and Antiquities Commission. Dr. Haag was appointed State Archaeologist by Governor Edwards following the passage of Act 378 in 1974. His efforts toward setting up a viable office for archaeology in Louisiana have been invaluable. We feel that the following Antiquities Commission resolution, passed on May 12, expresses our feelings about Dr. Haag.

A resolution expressing deep appreciation to Dr. William G. Haag for outstanding service as State Archaeologist.

WHEREAS, Dr. William G. Haag has served as State Archaeologist for the past five years and Chairman of the Louisiana Archaeological Survey and Antiquities Commission; and

WHEREAS, without the efforts of Dr. Haag there would probably be no such Commission and many historic and prehistoric items and sites would have been destroyed and lost forever; and

WHEREAS, Dr. Haag has given of his time, service, talents, and invaluable knowledge without compensation; and

WHEREAS, Dr. Haag has earned the love and respect of all who know him and has been an inspiration to them; and

WHEREAS, his devotion and work has been a major contribution to the cultural enrichment of the State of Louisiana,

NOW, THEREFORE, BE IT RESOLVED, that the Louisiana Archaeological Survey and Antiquities Commission does hereby commend, praise and express its deepest appreciation to Dr. William G. "Bill" Haag for his devotions and contributions to the said Commission and the bringing of archaeology to its rightful place in the State of Louisiana.

BE IT FURTHER RESOLVED that this resolution be spread upon the minutes of this Commission and copies of same be delivered to Dr. William G. Haag, the Honorable Edwin W. Edwards, Governor, and the Honorable Sandra S. Thompson, Secretary, Department of Culture, Recreation and Tourism.

ANNOUNCEMENTS

USL Center for Archaeological Studies Hosts Southeastern Archaeological Conference. The 1977 annual meeting of the Southeastern Archaeological Conference will be held at the College Inn on the campus of the University of Southwestern Louisiana, Lafayette, on Oct. 26-29. The Conference will meet jointly with the Conference of Historic Site Archaeology. The first day, Oct. 26, will be devoted to the CHSA, and the remainder to the SEAC.

Requests for paper presentations and symposia must be sent to: Jon L. Gibson, SEAC Program Chairman, Box 4-0198, USL Station, Lafayette, LA 70504. Deadline is Sept. 1 and requests should include a title and abstract of less than 150 words. Symposia organizers should give names of participants, their affiliation, and title of symposium as well as abstract.

Further details will be forthcoming in the Newsletter. For additional information, write Gibson.

Editorial Announcement - The Wonderful World of Poverty Point. The Assistant Editor announces that WWOPP is being discontinued as of this issue. The reason is that his The Poverty Point Culture has gone to print in the Geoscience and Man series, School of Geoscience, Louisiana State University, and should be available to all of you by the end of the summer. I hope you like it and that you have enjoyed the WWOPP briefs. If you would like for Jon and me to substitute a series of projectile point, tool or pottery type descriptions, or "How to do it" briefs on field and laboratory tips, let us know.

Change of Address. Joseph V. & Carol L. Frank, III.

Old Address: 1523 22nd St.
Lake Charles, LA 70601

New Address: 2406 Norben Dr.
Lake Charles, LA 70601

1977 LAS Field Workshop, Fishcreek Site, July 22, 23, and 24, 1977. The first LAS summer field workshop will be held July 22, 23, and 24, 1977 at the Fishcreek site. The Fishcreek site (16GR17) is situated on the floodplain of Little River near its confluence with Fishcreek. The site is located in Grand Parish, approximately 20 miles north-northeast of Alexandria, Louisiana.

The site consists of at least two low platform (?) mounds, one conical mound, and a large rectangular flat topped pyramidal mound. There is some indication of a borrow pit associated with one of the mounds and midden debris is concentrated in several areas. Surface collections are small but the available evidence suggest a Coles Creek association with a possible earlier component. Judging from the artificial earthen mounds, the Fishcreek site functioned on a civil and administrative center for the Little River drainage.

The Fishcreek site was selected for the 1977 field workshop because it was centrally located, easily accessible, met the workshop objectives, and provided opportunities for continued long range problem oriented research.

Mr. W.H. Holmes, the landowner, has graciously allowed us to hold the workshop on his property. In addition, Mr. Holmes had allowed us to use Camp Kwanokasha as our field headquarters. Camp Kwanokasha is situated off of Highway 165 approximately 7.0 miles north of Pollock and 5 miles from the site. The camp contains four large cabins and a large inclosed pavilion. All workshop activities, lectures, and the picnic will be coordinated from the camp.

Based on the LAS chapter response, field activities will include sessions on record keeping, preparation of a basic site map, sampling, stratigraphy, ceramic analysis, and lithic technology. Each session will involve a field problem or on some type of exercise. The sessions will be run by amateur or professional archaeologists from Louisiana and adjacent areas.

New Sites Placed on National Register. Ms. Sandra Thompson, Secretary of the Department of Culture, Recreation and Tourism and State Historical Preservation Officer announced that six new Louisiana sites have been listed on the National Register of Historic Places. The sites include Christ Episcopal Church and cemetery in Napoleonville, Camp Parapet Powder Magazine in Metairie, Michel Prudhomme Home in Opelousas, White Hall Plantation House near Simmesport, the Strand Theatre in Shreveport, and Chretien Point Plantation in Sunset.

SOURCES FOR OUT-OF-PRINT REFERENCES TO LOUISIANA ARCHAEOLOGY,
Thanks to David R. Jeane

1. Handbook of Texas Archaeology: Type Descriptions. Edited by D.A. Suhm and E.B. Jelks, 1962. 299 pp., 148 plates. \$9.00 + postage. Paperback;

Caddoan pottery types, projectile point types.

From: Texas Memorial Museum, 24th and Trinity Streets, Austin, Texas, 78705

2. Indian Tribes of the Lower Mississippi Valley and Adjacent Coast of the Gulf of Mexico. John R. Swanton, 1911. 215 pp.; \$24.50 (cloth).
From: Johnson Reprint Corporation, 111 Fifth Avenue, New York, NY 10003
3. The Belcher Mound, a Stratified Caddoan Site in Caddo Parish, Louisiana. Clarence H. Webb, 1959. 212 pp., 142 illustr.; \$22.00 (paper).
From: Kraus Reprint Company, Route 100, Millwood, NY 10546
4. The Tchefuncte Culture, an Early Occupation of the Lower Mississippi Valley. James A. Ford and George I. Quimby, Jr. 1945. \$12.00 (paper).
From: Kraus Reprint Co., Route 100, Millwood, NY 10546
5. Greenhouse: A Troyville-Coles Creek Period Site in Avoyelles Parish, Louisiana. James A. Ford, 1951. 132 pp. \$5.00 plus postage \$1.25.
From: Walter J. Johnson, Inc., 355 Chestnut St., Norwood, NJ 07648
6. The Jaketown Site in West-central Mississippi. James A. Ford, Philip Phillips and Wm. G. Haag, 1955. \$7.00 plus postage and handling \$1.25.
From: Walter J. Johnson, Inc., 355 Chestnut St., Norwood, NJ 07648
7. Poverty Point, a Late Archaic Site in Louisiana. James A. Ford and Clarence H. Webb, 1956. 136 pp. (paper), \$8.00 + \$1.25 postage & handling.
From: Walter J. Johnson, Inc. (above address)
8. Archaeology of the Fatherland Site: the Grand Village of the Natchez. Robert S. Neitzel, 1965. 108 pp., \$4.00 (paper bound).
From: Walter J. Johnson, Inc. (above address)

CURRENT ARCHAEOLOGICAL RESEARCH

A. From the State Archaeologist's Office - Debbie Woodiel

In May of 1977, the staff of the State Archaeologist's Office assisted Dr. Jeffrey P. Brain of Harvard University's Peabody Museum in a cooperative excavation of the Bloodhound Hill site, 16WF21. The Bloodhound Hill site is located on the grounds of the Angola State Penitentiary in West Feliciana Parish, an area of great cultural activity during the late prehistoric and early historic period. Four historic aboriginal burials were located and excavated. The skeletal material was in very poor shape, making it extremely difficult to determine age and sex of the individuals. An interesting aspect of the burials was the placement of both aboriginal and European made artifacts with the deceased. Grave items included French muskets, gun powder, brass bells, glass beads, a copper kettle, an iron knife, iron hatchets, a flint knife, a conch shell necklace, a Natchez incised pot and

a metal crucifix. Test excavations also were conducted on a flat terrace below the burial location. These excavations revealed a dark earth midden which yielded early 18th century aboriginal and European artifacts. Also found were several wall trenches with associated post molds. A series of auger holes indicate that the midden area is roughly semicircular in shape and may represent the remains of a small village. Preliminary speculation is that the village and burials are Tunica. A pedestrian survey of the surrounding hill area also was conducted in an effort to locate other sites. Further excavation in the village area is anticipated for the near future.

B. Coastal Environments, Inc., Baton Rouge, Louisiana - Richard A. Weinstein, Staff Archaeologist, Reporter

Within the past six months Coastal Environments, Inc. (CEI) has been conducting various cultural resource surveys and excavations.

Beginning in December, 1976 and continuing to the present, CEI archaeologists Richard A. Weinstein, Eileen K. Burden, and Katherine L. Brooks have been conducting a cultural resource survey of the proposed route of LA 3052 (Relocation of U.S. 90) from Ellsworth, Louisiana to Morgan City, Louisiana. Detailed analysis of surface collections from approximately thirty sites within approximately 1.6 km of the proposed right-of-way has been carried out. In addition, test excavations at the Bayou Ramos I site (16SMY133) have been completed and show a good early-to-late Coles Creek period occupation. This has been substantiated by radiocarbon dates ranging from 735 A.D. to 980 A.D. Test excavations at another site along Bayou Boeuf are also planned and work should commence shortly. All data obtained during the survey and excavations will be available in report form from the Louisiana Office of Highways sometime in late August or September, 1977.

Additional CEI cultural resource surveys and contracting agencies are listed below:

- 1) Cultural resource survey of West Hackberry strategic oil-storage facility, Cameron Parish, Louisiana. Performed and reported by Richard A. Weinstein, Eileen K. Burden, and Joseph V. Frank. For the Federal Energy Administration (FEA), Washington, D.C. (May, 1977).
- 2) Cultural resource survey of the proposed Choctaw Dome strategic oil-storage facility, Iberville Parish, Louisiana. Performed and reported by Katherine L. Brooks and Richard A. Weinstein. For FEA (June, 1977).
- 3) Cultural resource survey of flowline route, Webster Parish, Louisiana. Performed and reported by Richard A. Weinstein and Eileen K. Burden. For the Sun Oil Company, Gladewater, Texas. (February, 1977).
- 4) Cultural resource survey of well sites, pipeline route, and access roads, Webster Parish, Louisiana. Performed and reported by Richard A. Weinstein and Katherine L. Brooks. For Sun Oil Company and General American Oil Company of Texas, Gladewater, Texas. (June, 1977).

CEI staff archaeologist Eileen K. Burden recently completed the direction of a one-month excavation program at the historic Magnolia Mound Plantation House (16EBR30), Baton Rouge, Louisiana. The program was designed to locate and excavate the 1830 kitchen associated with the plantation house. Funds were made available through the Junior League of Baton Rouge, and the overall goal is to reconstruct a kitchen identical to the ca. 1830 one on the exact spot as the earlier structure. Students from L.S.U. and local, interested people were employed as excavation crew members. Analysis and final report preparation are in the infancy stages, but should be completed sometime in the fall, 1977.

Another CEI project, running on and off throughout the year has been a testing and mapping program at Fort St. Leon, English Turn, Plaquemines Parish, Louisiana. The project is a joint effort between CEI and J. Richard Shenkel and Richard Beavers of the University of New Orleans. CEI members involved in the project are Sherwood M. Gagliano, Richard A. Weinstein, Eileen K. Burden, and Katherine L. Brooks. So far 3 weeks of field work were carried out in January and February, 1977. Mapping the area and recommending areas to be tested further once the water level in the Mississippi River drops low enough were performed with the aim of locating the original fort structure. The project is being sponsored by the New Orleans District, U.S. Army Corps of Engineers.

Finally, a report entitled "Cultural Resource Survey of Interstate 410, St. Charles Parish, Louisiana" has been completed and submitted to the Louisiana Office of Highways. (The actual survey took place in May, 1976.) If any members of the LAS wish copies of this study, they are encouraged to contact: Mr. Philip G. Rivet, Environmental Unit, Office of Highways, Department of Transportation & Development, P.O. Box 44245, Capitol Station, Baton Rouge, Louisiana 70804.

Presently, there is no charge per copy, but that may change at the discretion of the Office of Highways.

C. Archaeology in Northwestern Louisiana - Hiram (Pete) Gregory, Reporter

Under the direction of Prentiss Thomas, the Institute for Maya Research is excavating a small Caddoan hamlet at Hanna, Louisiana, for the U.S. Army Corps of Engineers. Preliminary testing is underway. Pete Gregory's impression is a Bossier-Alto transition (but he is only guessing!) (Ed.: my impression is late Alto, ca. 1100 A.D., but I am also guessing).

Pete Gregory, with students from Northwestern State University, is excavating for a third season, at a 1790-1840 house site on the university campus. Rose Walker, a L.A.S. regular, is a student on that dig. Walls, poteau entre terre, and extensive midden is exposed just below the plow zone. Late trade beads, shell-tempered Indian sherds, a French holy medal dated 1840, American coinage (1840 half dime), and 1820 American military buttons suggest an Early American Period site, but one later than the Caddoan removal. Indian involvement would be Choctaw-Coushatta-Biloxi or Pascagoula.

Kim Curry, Pete Gregory, Clint Pine and Ted Brasher have conducted several E.I.S. surveys between Alexandria and Shreveport; especially important is their location along the eastern edge of the valley of Red River. They and Tom Ryan, of the Army Engineers, visited a deeply buried Archaic midden on Loggy Bayou in Red River Parish and, hopefully, future work will go far towards clarifying Middle Archaic occupations on the Red River. Two burials have been salvaged--one with a dog associated. Nutstones, projectile points: Kent and Evans/var. sinner are in association. Cut antler tines and flaking tools are common. Buried under 1 to 3 meters of backswamp alluvium, the site is undisturbed. Shell deposits and pits are exposed in eroded areas.

The archaeological consortium for the Red River Valley recently met at the Society for American Archaeology meetings in New Orleans. Participants from the Museum of the Red River, North Texas State University, the University of Texas, the Arkansas Archaeological Survey and Northwestern Louisiana State University, the Louisiana Archaeological Survey and the New Orleans District of the Army Corps of Engineers were in attendance. Discussants pointed to the need for comparable data sets, ecological data, and village site excavations. Theoretical needs stressed tighter chronology, better geographic sampling and then a shift to functional analysis.

The consortium has agreed to review draft grant/research designs and will meet again in Idabel, Oklahoma on July 23, 1977.

1. Florida Parishes - Brian J. Duhe (Ed.: taken from a recent letter, but so interesting that I include it here. I hope Brian doesn't mind).

Like you, I have been busy surveying, but not under contract. In my spare time I have found six sites in the Bogue Chitta River and distributaries area. Very unusual, reminiscent of Alabama Pickwick and Wheeler Basin sites. There are plenty of pebble tools, bifaces, cores and blades. Pottery is not abundant but is interesting: fiber-tempered sherds occur along with Jaketown Simple Stamped, but the most plentiful is Alexander sand tempered (incised and pinched) and O'Neal Plain. Some Marksville Incised with cross-hatched rims on grog-tempered paste. Most of my work has been confined to surface collectings, except for one site destroyed by logging operations and a gravel pit operation. I hope to have a preliminary report soon.

- D. Blackwater Site 16WE34, Webster Parish - David R. Jeane, Reporter

"It looks like a butt-plate off of an old gun," was the description given me over the phone one afternoon. I told the caller to bring it over and I would try to identify it for him.

My caller, Mr. James Martin of Springhill, is employed by International Paper Company and was working that day in a drained wastewater-holding pond behind the papermill. While on his lunch break he walked over to a small stream bed that meandered across the pond bottom. There on a sandy bank he saw a projectile point and within fifteen minutes had picked-up the material pictured.

A mutual friend gave him my name and told him that I would be interested in seeing what he had picked up.

The collection consisted of a chert tool with one edge pressure flaked; three novaculite projectile points and one chert projectile point; a mano with a pecked and smoothed convex surface, but with one side that has been ground on the top and bottom to form a "bit." This item is a fine-grained sandstone.

The highlight of the collection is a gorget of light grey slate. It has two conical-shaped, counter-drilled perforations and one conical-shaped unfinished perforation. One side is decorated with incised lines with zones of cross-hatching that either was never completed or has worn off. The other side is undecorated.

The site was revisited the next weekend but we only located a broken mano and several dozen pieces of lithic debris, mostly novaculite.

Based on this surface collection, the site is a single-component Middle-Late Archaic site. It is now back under fifteen feet of blackwater.

E. Southwestern Louisiana - Jon Gibson, Reporter

Since the appearance of the last newsletter, this reporter has conducted several cultural resource surveys for various towns and companies in compliance with federal authorizing legislation.

- a. Survey of Getty Oil Company, Well No. 2, near Calvin, Louisiana; 5.5 acre tract; piney woods; no sites found.
- b. Survey of Abbeville Airport; runway extension and widening; prairie-land environment; no sites found.
- c. Survey of Erath sewerage system; SW Louisiana prairieland dissected by Bayou Tigre; no sites found.
- d. Survey of Sunset sewerage system; mixed hardwood environment; no sites found.
- e. Survey of St. Martinville sewerage system; Teche Ridge; numerous historic sites, including 4 on National Register of Historic Places.
- f. Survey of Bayou Benoit borrow area; for Bernard McNamane Construction Co.; 47.5 acre tract; cypress-tupelo swamp; no sites found.

Detailed reports have been prepared and the USL Center for Archaeological Studies is considering the issuing of abbreviated versions of these reports as a continuing series. Eventually these reports will constitute a valuable source of information for an energetic synthesizer and should be made available.

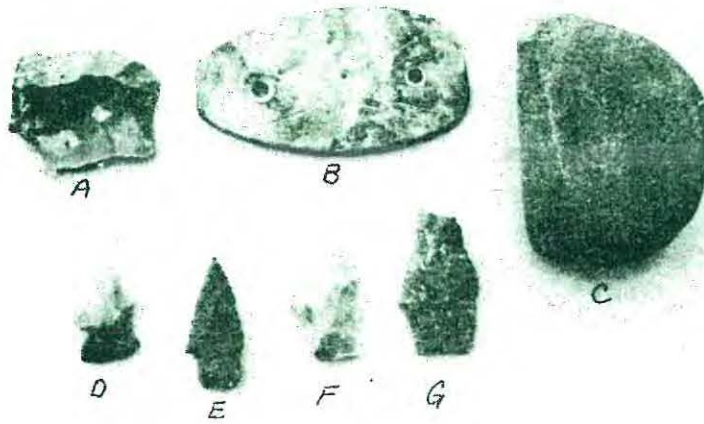


Fig. 1. Blackwater site artifacts. A, chert biface-scraper; B, slate 2-hole gorget; C, sandstone abrader-wedge; D-G, projectile points: D, Ellis type; E-F, Yarbrough type; G, Johnson type. Photograph by Webb, scale reduced approximately 2.5.

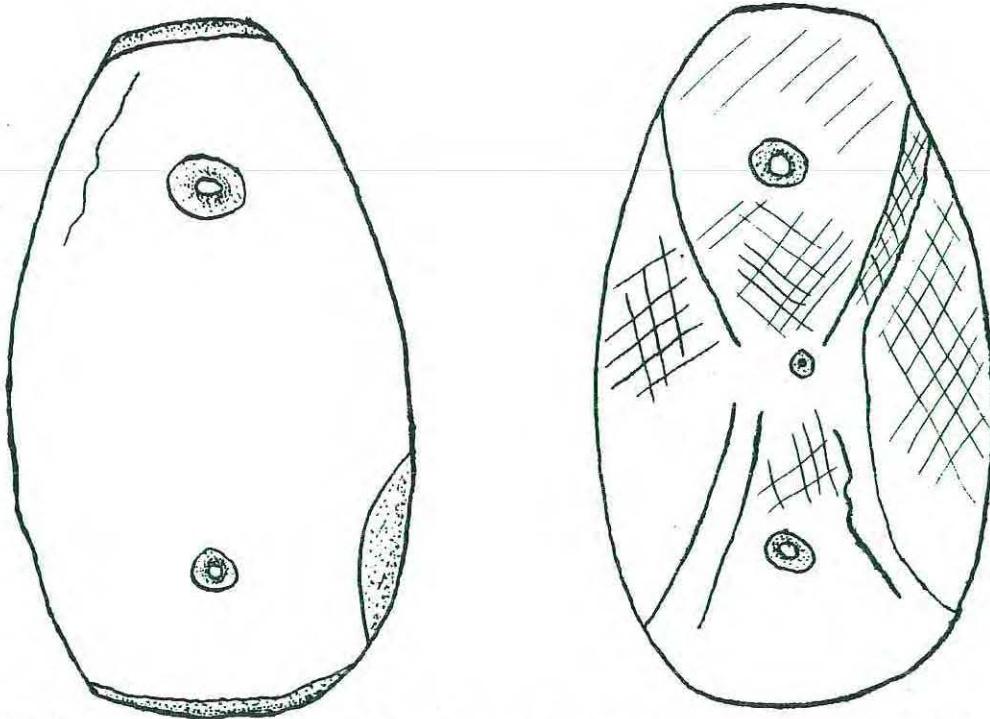


Fig. 2. Full size drawing of slate gorget, showing incised and cross-hatched decoration, also biconical drilling of perforations. Poverty Point style decoration and drilling. Sketch by Jeane.

Contract archaeology by USL Center for Archaeological Studies personnel includes several major projects. Federal disclosure regulations prohibit unauthorized publicity on these projects, but we hope to be able to present detailed information in a future newsletter.

Also from the USL Center for Archaeological Studies, Dr. Jon Gibson, Center Director, announces the appointment of Mr. Steven J. Brazda as the first full-time manager of the Center. Mr. Brazda, a USL graduate, has extensive archaeological experience, a degree in wildlife management (with an anthropology minor), and is an experienced pilot and diver.

CHAPTER NEWS

A. Imperial Calcasieu Chapter - Smokye Joe Frank, Reporter

Joe Toups of Lake Charles was guest speaker at the April meeting of the Southwest Louisiana Archaeological Society. Mr. Toups, a skilled potter with the potters' wheel, demonstrated his skills without the wheel. The results were quite typical of the aboriginal pottery found in southwest Louisiana. (Keep it up Joe, it has to get better.) The program was well attended by all. Some members were fortunate enough to get samples of Joe's wares.

O'Neal Smith, board member and former SWLAS officer, presented the May program. Mr. Smith's topic was about the recent trip to northeast Louisiana by a group of society members. Mr. Smith, Ralph Darnell, R.L. Coleman, Everett R. Scott, and Terrell Woosley motored to Winnsboro early this year for a weekend of site surveying. (Winnsboro is the birthplace of O'Neal.) The highlight of the trip was a visit to the Poverty Point State Park. Mr. Smith elaborated on numerous mound sites that were visited by the group. Society members enjoyed comments from the audience by the other members who made the trip. The meeting proved both humorous and educational for the large group in attendance.

The June meeting was highlighted by three speakers: Joe Toups, Mark Wentz, and Tommy Johnson.

Joe Toups began the program with comments about his recent trip to Yucatan. His subject matter was concerned with the night life after a hard day of climbing the Mayan ruins. It added a new dimension to the trip.

Mark Wentz spoke on his 10 day tenure at the Arkansas Field School. He was a student of the lithic studies at the field school. His knowledge will be called on frequently in the future.

Tommy Johnson of Lafayette talked about a new site he had located in the Lafayette area. Tommy has been active in site surveys throughout the Lafayette area.

B. Delta Chapter News - Joe Manuel, Reporter

Members of the Delta Chapter have been busy with a full program of meeting and field activity since our annual meeting. In February we had an old but interesting film, Shell Mounds in the Tennessee Valley, followed in March by a film entitled This Land, which explained four billion years of geologic phenomena resulting in North America as we know it. Robert Neuman spoke to us in April on The History of Louisiana Archaeology. Our sister chapters would profit from Bob's comprehensive coverage of the personalities and events in Louisiana archaeology. Tommy Ryan covered plans for the summer' amateur field camp at our May meeting - sounds good!

We presently have three field projects working:

- 1) Forrest Travirca is leading a survey of the Barataria region.
- 2) In response to request from the River Road Historical Society to excavate at Destrahan Plantation, Brian Duhe and a team from Delta Chapter are trying to solve some problems on this historic site.
- 3) We have a project in St. Helena Parish headed by Joe Manuel, Judge Charles Collins and Dan Shipman. Gravel mining operations are removing much of a lithic site in that parish. We are working ahead of the pumps in an effort to salvage some of the artifacts and information. Reports on our various activities will be presented at the fourth LAS Annual Meeting.

We have recently added several previously unreported sites to the LASAC files. They are the Hornsby site 16SH21, Shannell Drive 16ST73, Dunaway 16ST74, Thorp 16WA19, Boot 16TA34 and the McGehee site 16WA18.

After numerous discussions with the independent group of collectors in Bogalusa about LAS, and after being convinced that they were ready to join as a chapter, and after having talked many of you into sending them reprints and books on archaeology, they have not yet taken positive action. My apologies to all.

King Tutmania has hit New Orleans as evidenced by the large turnout at our June meeting. Three hundred and fifty people packed a two hundred and forty seat U.N.O. auditorium for a slide presentation by Dr. Virginia Davis, visiting curator of the Tut exhibit. The Egyptologist talked on Tut and his tomb, with detailed explanations of the rituals and artifacts associated with the young king's life and death. Dr. Davis spoke with the authority of one who has devoted her life to her work and loved every minute of it. She held the audience captive for more than an hour, after which she answered a number of lively questions. Our business meeting was purposely reduced to a few announcements plus a sales pitch on LAS from Brian Duhe. We hope to glean a few new members from the group of Egyptian devotees.

We extend congratulations to Alan Toth on the recent completion of his doctoral dissertation.

TRIBAL NEWS
Hiram (Pete) Gregory,
Reporter

The Jena Band of Choctaw have opened their new tribal center at Jena, Louisiana. Visitors are welcome. They have a career education program underway for their high school population sponsored by the CETA Indian Manpower Program.

The Tunica-Biloxi Tribe and their community planner, Tom Keene, are continuing with plans for their new tribal center and museum.

Steve and Ann Eglis, Mennonite volunteers, are working with Mrs. Norma Kwahjo and Mrs. Ana Mae Juneau of the Tunica Tribe.

The Houma tribe at Dulac, Louisiana, is undertaking an oral history-ethnography project. The project involves Houma youth in listening to and writing down tribal tradition and history. It is sponsored by the CETA Indian Manpower Program directed by Mrs. Jeanette Campos. Mr. Spiller Milton, director of the Houma Indian Center at Dulac and a Mennonite volunteer will be local coordinators with the tribal council.

The Chitimacha tribe at Charenton is sponsoring a series of basketry classes for tribal members. Teachers are traditional Chitimacha weavers. Baskets are on sale and a crafts display is open at their center in Charenton.

Ernest Sickey, chairman of the Coushatta Tribe, and Pete Gregory have been presenting a program on the Louisiana Indians. The program deals with Indian cultural values and public education. Sponsors are the Natchitoches Area Humanist Group and the Louisiana Committee for the National Endowment for the Humanities.

The Coushatta Tribal Council is preparing a museum for the Coushatta tribe at their crafts center at Elton. A visual program on Coushatta arts and crafts is available through the Coushatta tribal office at Elton, Louisiana. Tribal projects range from arts and crafts to housing and bilingual education.

Several smaller Indian communities in Natchitoches, Sabine, and northern Rapides Parish have begun organizing formally and are being assisted by the other tribes and Pete Mora, director of the Governor's Office on Indian Affairs. People in these areas are descended from Choctaw, Lipan Apache, and Osage, to mention major tribal origins.

1977 LAS Membership List

(Thru June 26, 1977)

Wm. S. Baker, Jr., Treasurer

Sustaining Member:

Gulf South Research Institute

Life Members:

Bonnin, Jack C.; Box 605 Welsh, La. 70591
Phillips, Philip; Peabody Museum Harvard Univ., Cambridge, Mass.
Stroud, W. J. Jr.; Rt. 1 Box 345, Elton, La. 70532

Regular Members

Adams, James R. ; P.O. Box 1023 Jennings, La. 70546
Alexander, Carl C. ; P.O. Box 246 Epps, La. 71237
Allbritton, Myron E. ; 4311 Evangeline Ave., Lake Charles, La. 70601
Allen, Glen T. ; Rt. 2 Box 1021 Reserve, La. 70084
Atkins, Bill ; Box 248 Jonesville, La. 71343
Aucoin, Barbara A.; 2545 Madrid St. Apt. 212, N. O. La. 70121
Baker, James H.; 21 Pine Dale #8 Houston, Texas 77006
BAKER, W. S. Jr.; P.O. Box 637 Jonesville, La. 71343 TREASURER
Beavers, Richard, C.; 2109 Calhoun St. N. O. La. 70118
Beckman, Michael W.; 567 N. Marlborough Circle, Shreveport, La. 71106
Bell, Robert E.; 1120 Berry Circle, Norman, Okla. 73069
Beriault, John G.; P.O. Box 7016, Naples, Fla. 33941
Bissel, Joseph; 502 Sena Dr., Metairie, La. 70005
Boersma, Mrs. Nell T.; 1082 Verdun Dr., Baton Rouge, La. 70810
Bollich, Charles N.; 5795 Viking Dr., Beaumont, Texas 77706
Bourn, Bill; 11888 Old Hammond Hwy 43, Baton Rouge, La. 70816
Braselman, Lin Emery; 7520 Dominican St., N. O. La. 70118
Braud, Rev. Dominic; St. Joseph Abbey, St. Benedict, La. 70457
Brazda, Steven J.; Box 335, Carencro, La. 70520
Brewerton, M. T.; 7600 Highmeadow #81, Houston, Texas 77063
Bride, Gloria Powers; Bayou Manchac Rd., Sunshine, La.
Brooks, Katherine L.; 4276 Arnold Lane Apt. 11, Baton Rouge, La. 70809
Broussard, Francis P.; P.O. Box 98, Abita Springs, La.
Brown, Ian W.; Dept. of Anthro, Brown University, Providence, R. I. 02912
Brown, Kenneth M.; 3504 Balcones Dr., Austin, Texas 78731
Brown, Thomas D.; 809 Jefferson Heights, Jefferson, La. 70181
Bruce, Dr. Joseph E.; P.O. Box 107, Sulpher, La. 70663
Bruder, Joan F.; 1811 Benjamin St., Arabi, La. 70032
Byrd, Kathleen; 4033 Burbanks Apt. 23, Baton Rouge, La. 70808
Capers, William A. Jr.; 922 Brockenbraugh Ct., Metairie, La. 70005
Carrigee, Janet Marie; 308 Central Ave., Jefferson, La. 70121
Casey, Jean L.; 2028 St. Nick Dr., N. O., La. 70114
Castille, George J. 3rd.; Box 20603, LSU, Baton Rouge, La. 70893
Chevalier, Nelson; Rt. 1 Box 72, Deville, La. 71328
Clark, Dr. Charles C.; 904 E. Kingshighway, Shreveport, La. 71105
Cobb, Herschel N.; 3644 Gasper Dr., Dallas, Texas 75220
Collins, J. Charles Jr.; 942 Harding Dr., N. O., La. 70119
Colquette, Richard L.; 5910 Roma Dr. Apt. 9, Shreveport, La. 71105
Comardelle, Michael J.; 40 Gardenia Lane, Waggaman, La. 70094
Conn, Thomas Louis; Dept. of Anthro, MSU P.O. Drawer GN, Mississippi
State, Mississippi 39762
Connaway, John; 109 Crestline Ave., Clarksdale, Miss. 38614
Cooper, Bob R.; 6620 Fennwood Dr., Zachary, La. 70791
Cosgrove, Alvin B.; 5605 Berne St., Metairie, La. 70003
Crader, John W.; 411 N. Craig, Jennings, La. 70546
Cuccia, Dominick L.; 4710 Wright Rd., N. O., La. 70128

Regular Members (continued)

Davis, Les; 816 Rimes Circle East, Monroe, La. 71201
Davlin, Joan; Dept. of Anthro, Tulane University, N. O., La. 70118
Dodd, Monroe E. Jr.; 4827 Gilbert Dr., Shreveport, La. 71106
Drew, Mrs. Harmon (Margaret); 1005 Elan St., Minden, La. 71055
Ducote, Greg J.; 106 Hobson St., Lafayette, La. 70501
Dugas, Tim J.; 3029 Lake St., Lake Charles, La. 70601
DUHE, BRIAN J.; P.O. Drawer B, Reserve, La. 70084 CORRESPONDING SECRETARY
Dupuy, Marc Jr.; 300 North Monroe St., Marksville, La. 71351
Durham, F. Manning; 4600 Bon Air Dr., Monroe, La. 71201
Durio, Charles A.; Rt. 1, Box 354 Lot 117, Lafayette, La. 70504
Dye, David H.; Dept. of Anthro, Washington University, St. Louis, Mo. 63130
Early, Ann M.; Box-2661 HSU, Arkadelphia, Ark. 71923
Exnicios, Joan; 127 Sherwood Forrest Dr., N. O., La. 70119
Fleming, Charles; Rt. 4 Box 188, Lake Charles, La. 70601
Fogleman, James A.; P.O. Box 81, Morrow, La. 71356
Foster, Weldon F.; 1800 Arizona St. #114A, Sulpher, La. 70663
Fox, Gary L.; 2409 Lowerline, N. O. La. 70125
Frank, Joe; 1523 22nd St., Lake Charles, La. 70601
French, Ronald M.D.; 1705 Calhoun St., N. O. La. 70118
Friedberg, Linda; 105 Grace Ave., Lafayette, La. 70501
Friedman, Ben M.; 29 Nassau Dr., Metairie, La. 70005
Fulgham, Susan; 5116 Highland Rd #5, Baton Rouge, La. 70808
Fullen, William Louis; 717 Dartmouth Lane, Deer Park, Texas 77536
Futch, Robin S.; LSU Dept. of Geo. & Anthro, Baton Rouge, La. 70808
GAGLIANO, SHERWOOD M.; Coastal Environments, Inc., 1260 Main St.,
Baton Rouge, La. 70802 PRESIDENT
Gast, Douglas; 7309 Edward St., N. O. La. 70126
GIBSON, JON L.; 120 Beta Drive, Lafayette, La. 70501 EDITOR
Glory, Melvin; 709 1/2 Waltham, Metairie, La. 70001
Groene, Dr. Bert; 1137 N. Gen. Pershing, Hammond, La. 70401
Guichard, Jacqueline Cornelia; 305 Central Ave., Jefferson, La. 70121
Guidry, R. Martin; QTRS 6301 G, USAF Academy, Colorado 80840
Guy, John H. Sr.; Box 118, Anacoco, La. 71403
Guy, John H. Jr.; 608 4th St. NSA, N. O., La. 70146
Haag, William G.; LSU Dept. of Geography & Anthro, Baton Rouge, La. 70803
Haigh, Norman M.; Star Rt. B, Box 84, Jonesville, La. 71343
Hale, Judson; P.O. Box 426, Minden, La. 71055
Hanson, Eileen M.; 4601 Cardenas Dr., N. O., La. 70127
Hanson, Jo-Ann Inez; P.O. Box 154, Abita Springs, La. 70420
Hardy, Nelson; Rt. 1, Box 574, Welsh, La. 70591
Harper, Luther T. "Dick"; 2214 Beechwood Dr., Monroe, La. 71201
Harris, Mrs. Lou; Rt. 4, Box 211D, Lake Charles, La. 70601
Head, Lawrence H. Jr.; 3930 Ashland Dr. Apt. 4, Huntsville, Ala. 35805
Heiman, Mayer J. M.D.; 1521 Delachaise St., N. O., La. 70115
Hodges, Paul L.; 319 Egan St., Monroe, La. 71202
Hunter, Donald G.; 4906 Victoria St., Alexandria, La. 71301
Jeane, David R.; 305 Hickory, Springhill, La. 71075
Johnson, Paula; P.O. Box 58, Abita Springs, La. 70420
Johnson, Tommy; 307 Dulles Blvd., Lafayette, La. 70501
Kendrick, Marvin E. M.D.; Box 768, Slidell, La. 70458
Kuttruff, Carl; 1612 Linden Ave., Nashville, Tenn.
Laborde, Alden J.; 63 Oriole St., N. O., La. 70124
Lacefield, Eric Maurice; 1008 Turnbull Dr., Metairie, La. 70001
Leutze, Willard P.; 200 Block Ave., Lafayette, La. 70501
Litteral, Caroline B.; 3709 Martineque-C, Kenner, La. 70062
Lochbaum, Chris; 2213 3rd St., Kenner, La. 70062
Long, James H.; P.O. Box 4392, Shreveport, La. 71104
Loumiat, Betty D.; 1013 Manhattan Blvd. Apt 371, Harvey, La. 70058
Lozano, Robert; 2713-D Independence, Metairie, La. 70002

Regular Members (continued)

Mamalakis, Vance J.; P.O. Box 365 Opelousas, La. 70570
Manry, John A.; P.O. Box 447 Plain Dealing, La. 71064
Manuel, Joseph O. Jr.; 113 North Dr. Covington, La. 70433
Mapp, Marcus; 3710 Rapides, Monroe, La. 71201
Miller, Layton J.; 605 Taft St., Lafayette, La.; 70501
Moore, Edwin H. (Lt. Col.); 180 White Birch Dr., Pease AFB, NE 03801
Morehead, James R.; 146 Lake Ave., Metairie, La. 70005
Morse, Dr. Dan F.; Drawer 820, State University, Ark. 72467
Mosher, Elizabeth; 1101 North 12th Apt 2, Tacoma, Wash. 98403
Mundie, James A. Jr.; 1205 St. Charles Ave. Apt. 501, N. O., La. 70130
Murry, Robert E. Jr.; 1810 Olive St., Baton Rouge, La. 70802
Neitzel, Robert S.; 110 Joffrion St., Marksville, La. 71351
Neuman, Robert W.; Curator of Anthropology, LSU, Baton Rouge, La. 70803
Olson, Isabelle M.; 225N. Alexander St., N. O., La. 70119
Owen, Jack F. Jr.; Bursley Bayou, Harrisonburg, La. 71340
Palermo, Jacqueline P.; Rt. 7 Box 348, Lake Charles, La. 70601
Parker, Fred; 2313 Carol Sue, Gretna, La. 70053
Passmore, Ted R.; RRI Box 78, Vick, La. 71372
Patterson, Leland W.; 418 Wycliffe, Houston, Texas 77079
Peck, Donald W.; 4809 Guilford Rd., College Park, Maryland 20740
Pendley, Bettie S.; 5627 Bancroft Dr., N. O., La. 70122
Perry, Stephen; 1303 Aberdeen, Baton Rouge, La. 70808
Phillips, Gary L.; P. O. Box 501, Destrehan, La. 70047
Pine, Walter C.; 1533 Edna Ave., Natchitoches, La. 71457
Polk, John; Rt. 1, 222 River Oaks Dr., Luling, La. 70070
Poland, Billie Gene; Rt. 1, Box 9, Beinville, La. 71008
Poole, Russel; 2040 Francais Drive, Shreveport, La. 71108
Price, G. R. Dennis; 54 Chauvin Dr., Monroe, La. 71203
Rice, Mary Ellen; 1802 Swarthmore, Alexandria, La. 71301
Richardson, Miles; Dept of Geo. & Anthro, LSU, Baton Rouge, La. 70803
Riser, R. M. M.D.; Rt. 5, Box 48 D, Covington, La. 70433
Rivet, Philip C.; 11888 Longridge Dr. Apt 3162, Baton Rouge, La. 70816
Robinson, Myra L.; 2812 Holiday Dr., N. O., La. 70114
Rohrbaugh, Charles L.; 2703 Milwaukee, Madison, Wisconsin 53704
Rolingson, Martha A.; Arkansas Archeological Survey, University of
Arkansas Museum, Fayetteville, Ark. 72701
Rose, Dorothy H.; P.O. Box 956, Monroe, La. 71201
Rudd, David M.; 517 E. 3rd., Covington, La. 70433
RYAN, THOMAS M.; 109 W. William David Pkwy, Metairie, La. 70005 CORRES. SECRETARY
Saucier, Roger T.; 105 Terrace St., Vicksburg, Miss. 39180
Savoie, Clarence; 3837 Seventh St., Harvey, La. 70058
Schiro, Mrs. Victor H.; 24 Tern St., New Orleans, La. 70124
Schmidt, Lewana R.; 118 Driftwood Dr., Lafayette, La. 70501
Scott, Everett R. Jr.; 927 Terry Lane, Lake Charles, La.; 70605
Sewall, J. Logan; P.O. Box 246, Vidalia, La. 71373
Shaikewitz, Mrs. T. B.; 2230 Valentine Court, N. O., La. 70114
Shenkel, J. Richard; 7709 Mayo Rd., New Orleans, La. 70126
Shiner, Joel L.; 6939 Lyre Lane, Dallas, Texas 75214
SHIPMAN, E. DAN; 926 Webster St., N. O., La. 70118 VICE PRESIDENT
Sibley, J. Ashley Jr.; Director, Grindstone Bluff Museum And Enviromental
Education Cntr., P.O. Box 7965, Shreveport, La. 71107
Sibley, Lynn L.; 1907 Shannon Rd., Alexandria, La. 71301
Simmons, Edward M.; Avery Island, La. 70513
Simmons, Lanier A.; Louisiana Research Foundation, Avery Island, La. 70513
Sims, Gerald N.; 285 Audubon Blvd., N. O., La. 70125
Sisemore, H. B.; 3216 E. 27th Pl., Tulsa, Okla. 74114
Smith, Gerald P.; 1987 Indian Village Dr., Memphis, Tenn. 38109
Springer, James W.; Dept of Anthro., Northern Ill. Univ., Dekalb, Ill. 60115

Regular Members (continued)

Stafford, Mary; 707 Henry St., Lake Charles, La. 70601
 Starbird, Leonard H.; 545 Jackson Ave., Mandeville, La. 70448
 Staub, Lynne A.; 812 Delgado, Baton Rouge, La. 70808
 Steponaitis, Vincas P.; Museum of Anthro., Univ. of Mich., Ann Arbor, Mich. 48109
 Story, Dee Ann; 10,000 Burnet Road, Austin Texas 78757
 Struben, W. C.; 1404 N. 2nd St., Monroe, La. 71201
 Taylor, Marillyn M.; 2311 Marie Pl., Monroe, La. 71201
 Thibodeaux, Harry L.; 5711 Monroe Hwy., Pineville, La. 71360
 Thorp, Jayn Legg; Rt. 6 Box 144, Franklinton, La. 70438
 Titsworth, Timothy N.; 105 Poinsetta, Lafayette, La. 70501
 Travirca, Forrest A. 3rd.; P.O. Box 181, Lockport, La. 70374
 Treadway, Benward L. Jr.; 2109 Farmsite Rd., Violet, La. 70092
 Van Buren, G. E.; Driftwood Villa 109, Ocean Beach Blvd., Cocoa Beach Fla. 32931
 Vautrot, Lloyd Jr.; P.O. Box 338, Destrehan, La. 70047
 Verzwylvelt, Bill; P.O. Box 1202, Glenmora, La. 71433
 Walker, Richard W.; P.O. Box 7362, Alexandria, La. 71306
 WEBB, C. H.; 3904 Creswell Road, Shreveport, La. 71106 ASST EDITOR
 Weinstein, Richard A.; 9624 Kingcrest Pkwy, Baton Rouge, La. 70810
 White, Lola; 910 Simmons St., Lake Charles, La. 70601
 Whitley, B. J. Jr.; P.O. Box 2511, Houston, Texas 77001
 Williams, Duane J. M.D.; P.O. Box 1232, Slidell, La. 70459
 Williams, Mrs. Duane J.; P.O. Box 1232, Slidell, La. 70459
 Winters, Mrs. Joe B.; 6724 W. Cameron St., Tulsa, Okla. 74127
 Womack, Alma; Star Route B, Box 45-A, Jonesville, La. 71343
 Woodiel, Deborah K.; 1645 Nicholson Dr., Baton Rouge, La. 70802

Associate Members

Allbritton, Vonnice; 4311 Evangeline Ave., Lake Charles, La. 70601
 Allen, Mrs. Glenn T.; Rt. 2 Box 1021 Reserve, La. 70084
 Baker, Patsy; P.O. Box 637 Jonesville, La. 71343
 Bissel, Norma; 502 Sena Dr., Metairie, La. 70001
 Brown, Gloria; 809 Jefferson Heights, Jefferson, La. 70181
 Bruder, Alfred J.; 1811 Benjamin St. Arabi, La. 70032
 Chevalier, Billie; Rt. 1, Box 72, Deville, La. 71328
 Cosgrove, Jewell; 5605 Berne St. Metairie, La. 70003
 Cuccia, Mercedes M.; 4710 Wright Rd. New Orleans, La. 70128
 Davis, Claire; 816 Rimes Circle East, Monroe, La. 71201
 Dodd, Mrs. Monroe E.; 4827 Gilbert Drive, Shreveport, La.; 71106
 Duhe, Charlene R.; P.O. Drawer B, Reserve, La. 70084
 Fleming, Myrna; Rt. 4 Box 188, Lake Charles, La. 70601
 Foster, Jane A.; 1800 Arizona St. #114A, Sulphur, La. 70663
 Frank, Carol; 1523 22nd St., Lake Charles, La. 70601
 Friedman, Majorie K.; 29 Nassau Dr. Metairie, La. 70005
 Gibson, Mary Bath; 120 Beta Drive, Lafayette, La. 70501
 Glory, Phyllis; 709 1/2 Waltham, Metairie, La. 70001
 Guy, Billie; Box 118 Anacoco, La. 71403
 Guy, Cathy E.; 608 4th St. NSA, N. O. La. 70146
 Haigh, Marion; Star Rt. B, Box 84 Jonesville, La. 71343
 Hanson, Sarah; 4601 Cardenas Dr., N. O. La. 70127
 Jeane, Anne; 305 Hickory, Springhill, La. 71075
 Johnson, ? ; P.O. Box 58, Abita Springs, La. 70420
 Kendrick, Mrs. Marvin E.; Box 768 Slidell, La. 70458
 Loumiet, Ronald P.; 1013 Manhattan Blvd., Apt. 371, Harvey, La. 70058
 Manuel, Benjamin M.; 113 N. Dr., Covington, La. 70433
 Manuel, Joseph O. 3rd; 113 N. Dr., Covington, La. 70433
 Manuel, Thomas M.; 113 N. Dr., Covington, La. 70433
 Mapp, Elise; 3710 Rapides, Monroe, La. 71201
 Passmore, Josephine M.; RR 1 Box 78, Vick, La. 71372
 Phillips ? ; P.O. Box 501, Destrehan, La. 70047

Associate Members (continued)

Rice, Pearl M.; 1802 Swarthmore, Alexandria, La. 71301
Rose, Julian F.; 4521 Hillside Dr., Jackson, Miss. 39602
Sewell, Renza; P.O. Box 246, Vidalia, La. 71373
Verzwyvelt, Mary; P.O. Box 1202, Glenmora, La. 71433
Walker, Rose; P.O. Box 7362, Alexandria, La. 71306
Webb, Mrs. C. H.; 3904 Creswell Road, Shreveport, La. 71106
White, Marie Ann; 910 Simmons St., Lake Charles, La. 70601

Institutional

Audubon Regional Library; Box 565 A, Clinton, La. 70722
Bienville Parish Library; 604 S. Maple St., Arcadia, La. 71001
Bossier Parish Library; P.O. Box 638, Benton, La. 71006
Calcasieu Parish Public Library; 411 Pujos St., Lake Charles, La. 70601
Caldwell Parish Library; P.O. Box 828, Columbia, La. 71418
Dept. of Culture, Recreation and Tourism; P.O. Box 44361, Baton Rouge, La. 70804
East Baton Rouge Parish Library; 7711 Goodwood Blvd., Baton Rouge, La. 70806
Florida, University of South; Library, Tampa, Fla. 33620
Franklin Parish Library; 209 Main St., Winnsboro, La. 71295
Iberville Parish Library; P.O. Box 736, Plaquemine, La. 70764
Junior Archaeological Society; Grindstone Bluff Museum and Environmental
Education Center, P.O. Box 7965, Shreveport, La. 71107
Lafayette Natural History Museum; 637 Girard Park Dr., Lafayette, La. 70503
Lafourche Parish Library; P.O. Box 998, Thibodaux, La. 70301
LSU - Shreveport; Library Serials Dept., 8515 Youree Dr., Shreveport, La. 71105
Louisiana Archaeological Survey and Antiquities Commission; 1645
Nicholson Drive, Baton Rouge, La. 70802
Louisiana State Library; Serials Dept., P.O. Box 131, Baton Rouge, La. 70821
Memphis State University; Chucalissa Museum, 1987 Indian Village Dr.,
Memphis, Tenn. 38109
Morehouse Parish Library; Box 232 108 E. Jefferson, Bastrop, La. 71220
Museum of The American Indian; Library, 9 Westchester Square, Bronx, N. Y. 10461
Museums Library; 2500 Museums Bldg., Washtenaw and North University,
Ann Arbor, Mich. 48109
New Orleans Public Library; Serials Div., 219 Loyola Av., N. O., La. 70140
Peabody Museum; Tozzer Library, 21 Divinity Av., Cambridge, Mass. 02138
St. John The Baptist Parish Library; River Lands Shopping Center,
Air Line Hwy., Laplace, La. 70068
St. Mary Parish Library; 206 Iberia St., Franklin, La. 70538
Tangipahoa Parish Library; P.O. Box 578, Amite, La. 70422
Texas A&M University; Library-Serials Record, College Station, Texas 77843
Tulane University; Serials Dept., Tulane Univ. Lib., N. O., La. 70118
University of New Orleans; Serials Dept., Earl K. Long Lib., N. O., La. 70122
University of Southwestern La.; Serials Dept., USL Box 4-0199, Lafayette, La. 70504

After June 26

Brown, James H. Jr. Senator; P.O. Box 797, Ferriday, La. 71334

DEPARTMENT OF SOCIAL STUDIES
UNIVERSITY OF SOUTHWESTERN LOUISIANA
LAFAYETTE, LOUISIANA 70501

Dr. Jon L. Gibson
120 Beta Drive
Lafayette, LA 70501

