

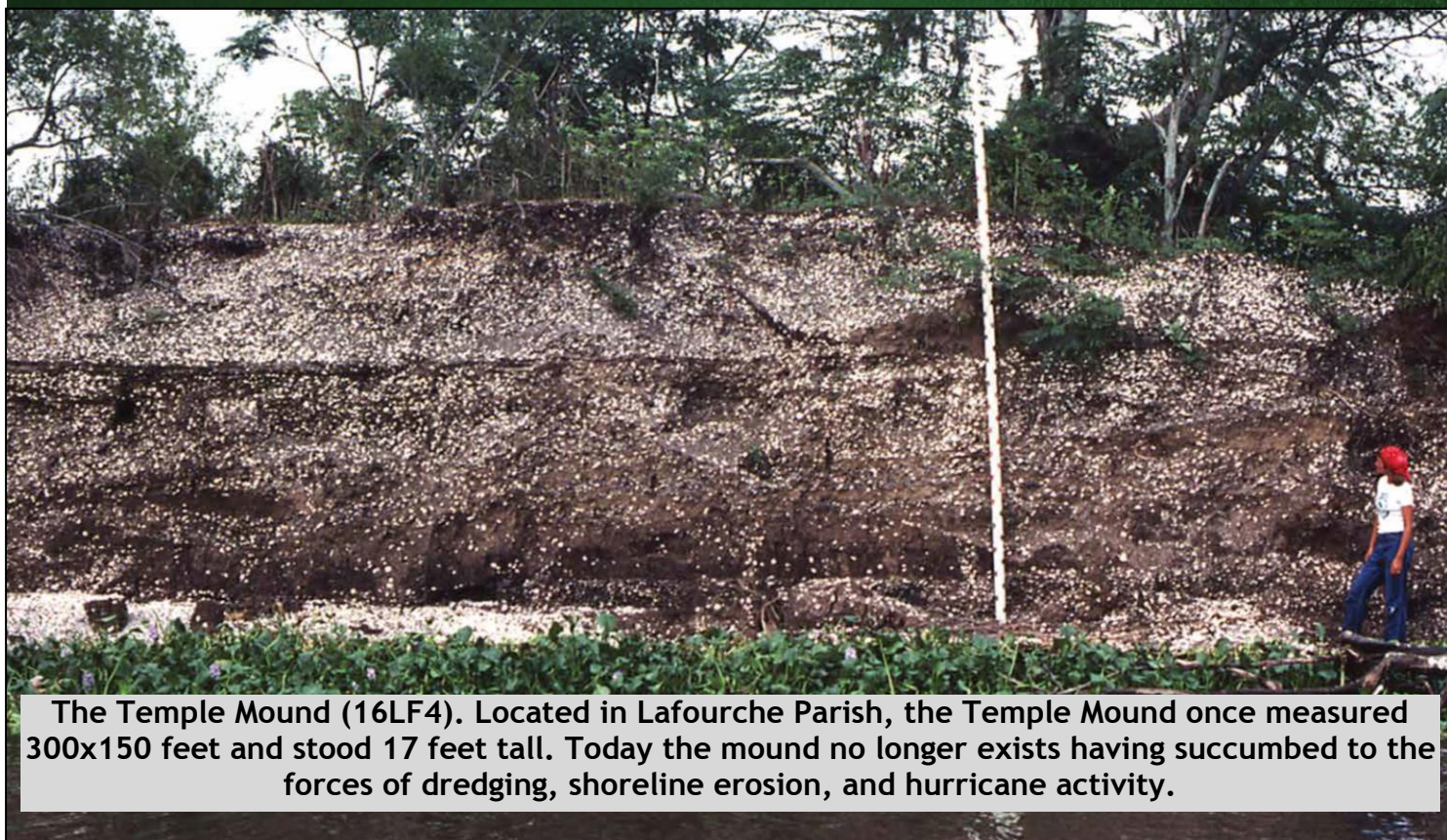


NEWSLETTER OF THE LOUISIANA ARCHAEOLOGICAL SOCIETY

Fall 2019

Vol. 47, No.2

Louisiana Archaeology Month 2019



The Temple Mound (16LF4). Located in Lafourche Parish, the Temple Mound once measured 300x150 feet and stood 17 feet tall. Today the mound no longer exists having succumbed to the forces of dredging, shoreline erosion, and hurricane activity.

What will you lose in 50 years?

LAS Newsletter printed courtesy of R. Christopher and Associates, Inc.
New Orleans, Louisiana

Potential Rise in Water in the Gulf of Mexico in the Next 50 Years:

6 feet (National Oceanic and Atmospheric Administration)

Potential Land Loss in the Next 50 Years:

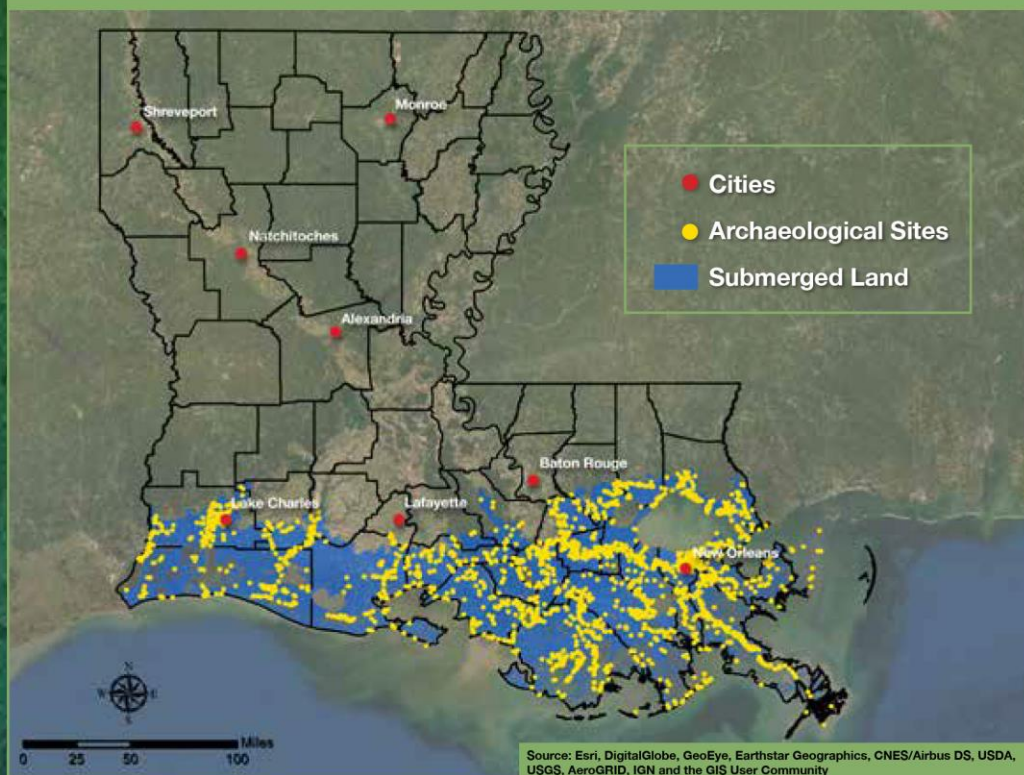
2,254 square miles or roughly **36%** of
Louisiana's coastal zone.

(Coastal Protection and Restoration Authority)

Number of Known Archaeological Sites

Potentially Lost: **3,297**

Maximum Projected Land Loss: 2067



The cover of this newsletter and the information presented here are elements for the poster commemorating Louisiana Archaeology Month 2019.

Go to the website for the Louisiana Division of Archaeology to get details for planned events and activities.

<https://www.crt.state.la.us/cultural-development/archaeology/>

LAS CHAPTER AND MEMBERSHIP NEWS

Joint LAS and MAA Annual Meeting 2020

Save the Date and Call for Papers

The joint annual meeting will be held in Natchez,
February 7—9, 2020.

Venue: Hotel Vue

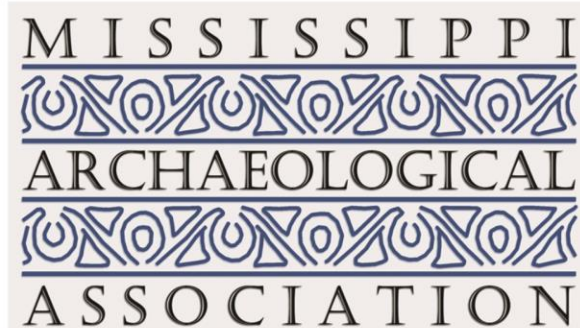
(<https://www.hotelvuenatchez.com/>)

Programs chairs : Rachel Watson & Lance Harris

Please submit abstracts to

info@natchezgrandvillage.com

Abstract Deadline January 9, 2020



Additional hotel and conference information to follow. If you have questions,
please contact Rachel Watson (rwatson@crt.la.gov) or
Lance Harris (lharris@mdah.ms.gov).

IN MEMORIAM

Mrs. Nancy Marie Franklin Affeltranger, age 77, of Pineville, Louisiana, entered eternal rest on Friday, May 31, 2019 at Rapides Regional Medical Center, in Alexandria, Louisiana.

Funeral services for Mrs. Affeltranger were held on Tuesday, June 4, 2019 at 11:00 a.m. in the Chapel of Gallagher Funeral Home in Ball, Louisiana, with Deacon Deloach officiating.

Mrs. Affeltranger was a loving wife, mother, grandmother, and sister. She loved teaching science and had a great passion for Archeology and was the President of the Central Chapter of the Louisiana Archeological Society. Mrs. Affeltranger taught in Fairmont, West Virginia, Menard and Tioga High Schools. She enjoyed cooking and was especially fond of Italian food. Mrs. Affeltranger was a faithful and longtime member of Immaculate Heart of Mary Church in Tioga. She will forever be missed by those that loved and knew her.

She was preceded in death by her parents, Leroy and Helen Teti Franklin; and sister, Carol Harris. Mrs. Nancy Affeltranger is survived by her loving husband of 53 years, Charlie Affeltranger; children, Cindy S. Cheramie (Paul) of Jennings, Timothy Donald Affeltranger of Pineville, and Tammy Beatty (Ron) of Menominee Falls, Wisconsin; sister, Patricia McCarty (Doug) of Fairmont, West Virginia; grandchildren, Sarah Brook and Cody Affeltranger of Illinois.



Robert W. Neuman

September 14, 1930 - September 09, 2019

Bob was born in Chicago, Illinois but grew up in St. Petersburg, Florida with his mother and sister. He graduated from Tulane University and Louisiana State University with degrees in anthropology. His career as an archaeologist included 11 years for the Smithsonian Institution followed by 27 years at Louisiana State University. He retired and moved with his wife to Natchitoches in 1995.

He is survived by his wife of 39 years, Kathleen Mary Byrd, and by his five children: Ellen Theresa Murry, Dena Margaret Silver, Patrice Haven Newman, Michael Kearney Neuman, and Elizabeth Eugenie Neuman and four grandchildren Robear Murry, Mikaela Flores, Emily Silver, and Dorrie Silver

ROBERT CONNOLLY

Robert Connolly, an education/museum professional, anthropologist, community activist, and advocate, died Tuesday, August 20, 2019 at his home in New Orleans as a result of complications from cancer. Robert was born on March 26, 1952 in Cincinnati, Ohio. Early in his life he worked as an industrial machinist for various companies, including the General Electric Jet Engine Group. In 1989 he received his B.A., followed by an M.A. in anthropology from the University of Cincinnati. He completed his Ph.D. at the University of Illinois at Urbana-Champaign.

Robert began his academic career teaching at the University of Cincinnati and the University of Illinois at Urbana-Champaign. He did field work as an archaeologist for the State of Mississippi and later became the Station Archaeologist for the Poverty Point Site in Northeast Louisiana. There he worked to facilitate its designation as a World Heritage Site



In Robert's words, he made the best decision of his life when he married Emma in 1999. In Jackson, Mississippi, Robert was the administrator of St. Andrew's Episcopal Church. Before his institutional and academic career ended in retirement, Robert also served as an Associate Professor of the Department of Anthropology and Department of Earth Sciences at the University of Memphis. He also served as director of the C.H. Nash Museum at Chucalissa. He published numerous academic papers, teaching documents, and field reports. He particularly enjoyed working with indigenous communities in Peru, Ecuador, Guatemala, Honduras, Yucatan, Turkey and Panama. After retirement, he was happily involved with Rayne United Methodist Church, in particular teaching and outreach. One of his highest gifts and passions was mentoring students into the best version of themselves.

In his own words, Robert liked most of all being with Emma, living into the process, "aha" moments, facilitating the exploration of big ideas, reading, travel on 2-lane highways, computer graphics, biking, writing, photography, baking, eating, hanging with the grandkids, heat and humidity, recovery, and all those two-room country museums spread across this country. In 2013, Robert began writing a blog ("A Process, Not an Event") about his long-term recovery from alcoholism and his cancer diagnosis. It was written as a path to understanding and a story of spirituality, acceptance, and life lived on life's terms.

He is survived by his wife, Emma French Connolly of New Orleans; mother Mary Connolly, brother Bill, sister Kathy, and brother-in-law Tim Grant, all of Cincinnati; stepchildren John Cerami and Alissa Cerami of Jackson, and Jennifer Bogart of New Orleans; numerous nieces, nephews and grandchildren; and Grace, his rescue golden retriever, that was always nearby at the end of his journey.

The family thanks the entire congregation of Rayne Methodist, the staff of Compassus Hospice, and The Neptune Society of New Orleans. A memorial service was held at Rayne Memorial United Methodist Church, 3900 St. Charles Avenue, New Orleans, Louisiana on Saturday, August 24, 2019 In lieu of flowers, the family requests memorials to Rayne Memorial UM Church, and to The School for Contemplative Living in New Orleans Rayne.

-Published in The Times-Picayune on Aug. 22, 2019

Robert Connolly: Poverty Point Station Archaeologist and Leader in Public Outreach

By Nancy Hawkins

Robert “Bob” Connolly’s fascination with Poverty Point started on a student field trip to the site, when he imagined working there one day. Several years later, he began serving as the first Poverty Point Station Archaeologist. Throughout his tenure, from 1996 to 2003, Bob brought tremendous energy and excitement to Poverty Point, and he leaves a lasting legacy as both a scholarly archaeologist and a public archaeologist.

The Station Archaeology program was established to facilitate the scientific study of Poverty Point and the public’s understanding of the site. Bob took these responsibilities seriously and was eager to move forward on as many fronts as possible. He simultaneously honed public outreach skills, conducted field projects, studied previous collections, and addressed archaeological management issues.

Among Bob’s most significant accomplishments at Poverty Point were developing a research design that included a comprehensive summary of all previous research and standards for field, lab and curation practices; compiling and evaluating all known radiocarbon dates from the site; preparing a full report of Dr. Sharon Goad’s 1980–1982 excavations; and tackling a daunting collections management challenge. During his early years as Station Archaeologist, the Office of State Parks constructed a secure, climate-controlled Curatorial Facility at Poverty Point, which became the repository for artifact collections and associated records from decades of archaeological investigations. Never one to shy away from big tasks, Bob, with the help of a tireless collections manager, devised procedures to organize, evaluate, and care for this consolidated collection.

During his time at Poverty Point, the idea of pursuing World Heritage listing for the site was formulated. The timeline for nominations was set at the federal level, though, and the first formal step could not be taken for several years. Bob’s many contributions as station archaeologist, however, were woven throughout the 2013 Poverty Point World Heritage nomination dossier, strengthening both the main document and the associated management plan.

Over the past 10 years, Bob rose to leadership in various national and international efforts to expand the relevance and accessibility of archaeology. He served as chairperson of the Society for American

Archaeology’s (SAA) Public Education Committee, and he was a member of the Southeastern Archaeological Conference’s Public Education Task Force. He was a champion of the Archaeological Institute of America’s (AIA) International Archaeology Day, and he supported the Archaeology Education Clearinghouse, a consortium that the SAA, AIA, and Society for Historical Archaeology established to promote educational use of archaeological information. In keeping with his interest in exploring ways to share archaeology with others, Bob recently overhauled the Poverty Point Wikipedia page. He dramatically improved the accuracy of the entry and provided yet another significant contribution to public understanding of the site.

After Bob’s retirement from the University of Memphis in 2016, he returned to Louisiana and lived in New Orleans. He continued online teaching for the University of Memphis, worked in Peru, was an adjunct faculty member at LSU, and served for a year as the president of the Advocates for Poverty Point.

Beyond his practical contributions to archaeology, Bob will be remembered for his broad scope of interests; his efforts to call attention to the under-recognized work of others; his openness to new ideas; and his interest in tackling new challenges.



Bob Connolly giving an archaeology demonstration at Poverty Point in 1997 (photo by Charles Parker).

NEW LAS BULLETIN!

The 2017 Issue of *Louisiana Archaeology*, the bulletin of the LAS has been published. This volume, No. 44, is dedicated to the Monte Sano site (16EBR17) in Baton Rouge.

This site, consisting of two conical mounds and a nearby midden, was perched near the edge of a Pleistocene terrace on Mississippi River. The mounds were levelled and the site destroyed in the spring of 1967 to make way for the construction of a chemical plant. Emergency salvage excavations were directed by the late Dr. William G. Haag of LSU, with the assistance of James A. Ford, Carl Kuttruff, and others.

A suite of radiocarbon dates, as well as recovered artifacts from Mound A, suggest that this is the oldest known prehistoric mound in North America. Artifacts associated with a nearby midden also point to the site's occupation during the Middle Archaic period, as well as later periods.

A posthumously published article by Haag and Kuttruff details the results of the excavations, while articles by John Connaway, Sam Brookes, and Dennis Jones present analyses of artifacts recovered from the site and the implications of the Monte Sano site as currently understood for archaeology in the Lower Mississippi Valley and the Southeast.

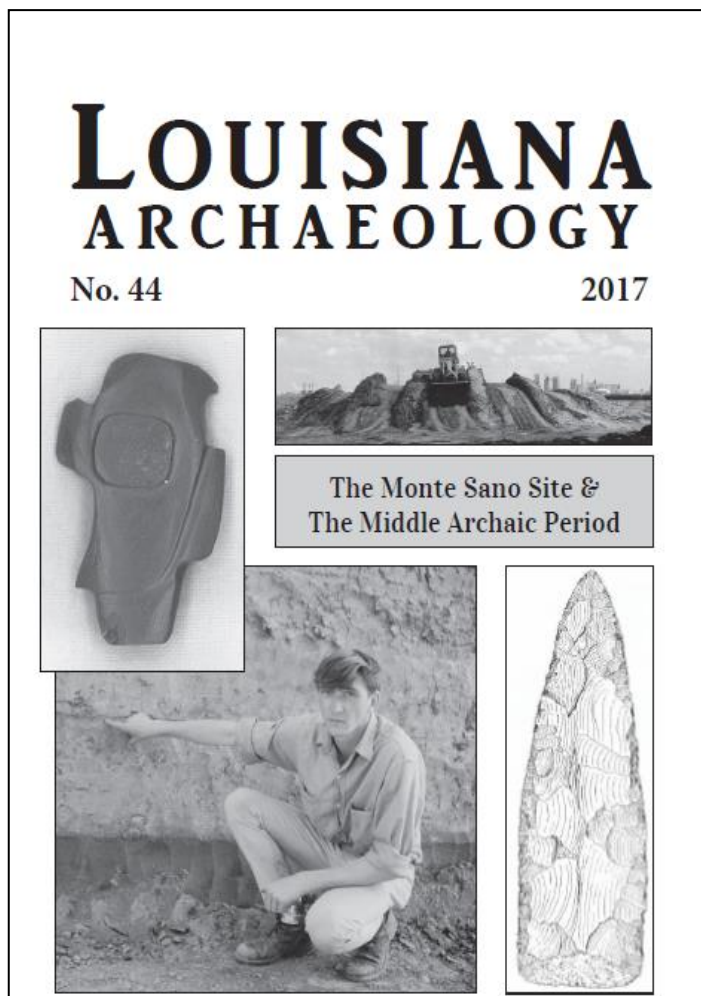
This bulletin will be available for distribution to LAS members at the SEAC meeting Nov. 6-9 in Jackson, MS as well as the LAS/MAA meeting Feb. 7-9 in Natchez, MS. Copies will be on sale to non-members at these conferences as well as from the LAS website. LAS members unable to attend either of these conferences will receive their copies by mail.

Without a report on the results of the 1967 excavations, the Monte Sano site has long been the source of speculation, controversy, and rumor among archaeologists. It is hoped this publication by the LAS will change that!

If the gods are smiling and no human foibles intervene, the 2018 bulletin of the Louisiana Archaeological Society, No. 45, also will be available for distribution to the 2018 membership (and others who may wish to purchase it) at the LAS/MAA joint meeting February 7-9, 2020 in Natchez, MS.

Unlike the 2017 bulletin, this number will contain a collection of articles dealing with a variety of prehistoric and historic archaeological sites and artifacts.

Additional bulletins are also in preparation. Archaeologists working in Louisiana and adjacent areas are encouraged to submit manuscripts on their research. If you have any questions contact Dennis Jones, LAS Editor at archaeman.jones@gmail.com.



FIELD NOTES AND CURRENT RESEARCH

2019 Summer Curation Work on the Kisatchie Ranger District, Kisatchie National Forest and Natchitoches Parish

By Geoffrey R. Lehmann, Kisatchie Ranger District, Kisatchie National Forest

August 2019. This year Cristyn Maxey and Bradley Waters from LSU along with Emaleigh Ryan (crew team leader) and Jason Hynson from UL Lafayette joined me for 5-weeks of curation work here on the Kisatchie Ranger District (KRD). Participating agreements between the three institutions provide students the opportunity for hands-on experience as a curation crew processing archeological collections amassed across the Kisatchie National Forest (KNF) over the last 40 years.

Our attention was devoted to existing collections from 40 years of past investigations across the KNF that were housed in the Forest Supervisor's office. Some of these were in original paper bags and cartons of varying descriptions, so our primary effort was to get as much as possible into modern collection bags while preserving all available information. By the end of the session the

crew had processed about 30 cubic feet! It was a pretty good feeling to deliver a trailer load of nice, new cartons filled with innumerable zip-loc bags protecting the collections back to Pineville.

Along with the primary goal of training the students in real-world archeological collections curation, the KRD exposed them to the variety of operations conducted by a Federal land managing agency. This includes wildlife biology (with a focus on the endangered Red-cockaded Woodpecker), recreation, controlled burning, and timber management.

A field trip to Ft. Polk provided an excellent introduction to the world of curation from Sherry Wagener, and was followed up by Sherry and two of her colleagues, Jeff Kotson and Caitlin Warnser driving up to the KRD for a full day of hands-on instruction and processing. Forest Archeologist Velicia Bergstrom was there, as well, and we were able to address known and newly revealed issues with the old collections as we move forward with the curation process.

Thanks to Bradley, Cristyn, Emaleigh and Jason for all your help.



From left to right: Emaleigh Ryan, Bradley Waters, Cristyn Maxey and Jason Hynson in one of the local caves formed in the Catahoula Formation

Poverty Point Station Archaeology Program Update

By Diana M. Greenlee, Station Archaeologist, Poverty Point World Heritage Site

The Poverty Point Station Archaeology Program has partnered with Dr. Rinita Dalan (Minnesota State University Moorhead) to study an intriguing rise within the plaza at Poverty Point WHS. The so-called West Plaza Rise is a subtly elevated feature of the landscape located at the intersection of the western aisle to Mound A and the Mound E Ridge (Figure 1). It is also the site of several deep post pits (excavated by LSU's Dr. William Haag in 1975) and circular magnetic anomalies (documented by Drs. Michael Hargrave and Berle Clay in 2006 and 2011). Long thought to be simply an erosional remnant protected from cultivation by a 20th century farmhouse, recent soil cores and downhole magnetic susceptibility tests suggest it may have been a significant prehistoric construction.

Drs. Dalan and Greenlee have been awarded a 2019 Preservation Technology and Training grant from the U.S. National Park Service for an international technology transfer application of cutting-edge multi-channel ground penetrating radar (3D GPR) to the project. The 3D GPR instrument can produce high speed, ultra-high resolution, variable depth, three-dimensional images of subsurface features. While typically used for infrastructure mapping and inspection projects like roads and bridges, railroads, utilities, 3D GPR technology also provides the potential for substantially increasing subsurface resolution in archaeological research. It is an opportunity for revealing feature shapes and stratigraphic context over a large area with increased resolution in plan and section.

Drs. Arne Anderson Starnes and Carmen Cuenca-Garcia from the Terrestrial, Marine and Aerial Remote sensing for archaeology research group at the Norwegian University of Science and Technology are collaborating on the 3D GPR survey; other partners include Mr. Thurman Allen (Morehouse Parish Soil and Water Conservation District) and Drs. Michael Hargrave (U.S. Army Engineer Research and Development Center, Construction Engineering Research Laboratory) and Berle Clay (Cultural Resource Analysts, Inc.). Targeted soil cores, downhole magnetic susceptibility, and soil analyses will provide complementary data to the 3D GPR survey. The Advocates for Poverty Point group are providing support for soil analyses. The GPR survey is tentatively planned for the last week of November; visitors are welcome to come by and observe the application of this remote sensing technology.

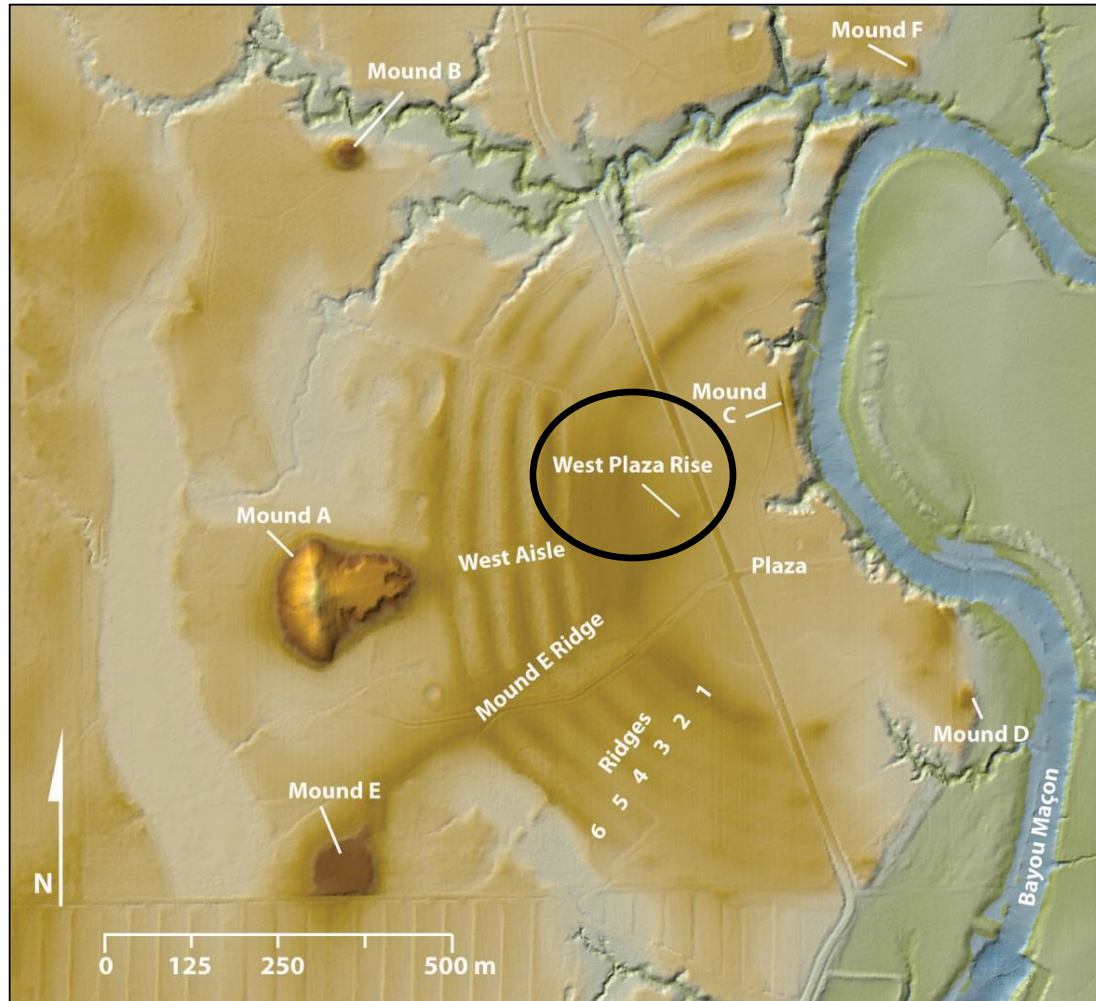


Figure 1. The Poverty Point World Heritage Site showing the earthworks and the West Plaza Rise. LiDAR data courtesy of FEMA and the State of Louisiana; data distributed by “Atlas: The Louisiana Statewide GIS,” LSU CADGIS Research Laboratory, Baton Rouge, Louisiana.

The Station Archaeology Program is exploring the possibility of a curation project to work on an under-curved and under-reported collection from research conducted at the site in 1991. That excavation investigated possible house floors or other prepared surfaces on Ridge 2 Northwest that had been identified in soil cores. The project will involve organizing and digitizing the field records and other documentation; cataloging and analyzing the artifact assemblage; preparing the artifacts and records for curation; writing a final report detailing results of the analysis; and conducting public outreach about the project goals and results. This undertaking, with a projected start date of 2 January 2020, could produce important results, with implications for our understanding of Poverty Point habitation. Interested individuals should contact Diana Greenlee (greenlee@ulm.edu).

On 22 June 2019, Poverty Point celebrated its 5th anniversary as a World Heritage Site. Visitors got to watch and/or participate in a variety of demonstrations and activities such as spear throwing with an atlatl, flint knapping, water screening for artifacts, fire starting, and mat weaving. The Advocates for Poverty Point provided light refreshments, including a beautiful and tasty anniversary cake (Figure 2)!

Binghamton University researchers Tiffany Raymond, Anna Patchen, and Misha Westover spent June at the Poverty Point WHS engaged in a variety of research tasks. They conducted magnetic gradiometer surveys in the area of the Dock, Mound B Field, and north and east of the dormitory at Poverty Point, around Lower Jackson Mound, and at the Horseshoe Church site near Mer Rouge, LA, in order to identify magnetic anomalies that could indicate the presence of subsurface features. They collected artifacts and soil samples from a disked portion of Mound B Field (Figure 3) as part of their investigation of a magnetic anomaly documented there. And, they assisted with the Station's pedestrian survey in the Poverty Point Compatible Use Zone. They hope to return later this year to excavate in the Mound B Field area.



Figure 2. Anniversary cake for the fifth anniversary of Poverty Point being designated a World Heritage Site. The cake was provided by the Advocates for Poverty Point.

Figure 3. Binghamton University researchers (arrow) collecting artifacts and soil samples in Poverty Point's Mound B Field.



Grand Lake Alligator Effigy Mound

By Trent Gremillion, Southwest Louisiana Archaeology, Facebook

Southwest Louisiana was once dotted with a constellation of shell mounds. These large heaps of discarded clam shell were a mystery to early settlers. Who or what created them? Upon examination the mounds were proven to be accumulated by prehistoric man. One site in particular stood out from all the rest as it appeared to have been shaped in the form of Louisiana's most iconic reptile.

The alligator effigy (shaped) Indian mound on the southeast shore of Grand Lake was believed to be the only known mound of its kind along the Gulf Coast of Louisiana.

The effigy mound sat atop Chenier du Fond, formally known as Chenier du Faux in full recognition of its man-made origins. Located in the northern section of the chenier plain, it is one of the oldest ancient shorelines in that area. Today most of the original chenier has subsided below sea level.

The monument was composed almost entirely of *Rangia cuneata*, a small brackish water clam found along the Gulf coast in prehistoric times. Sometimes called kitchen midden, the shell heap was equivalent to a modern day trash dump. These leftovers of early human occupation typically consisted of animal bone, botanical material, pot shards, and on occasion human remains.

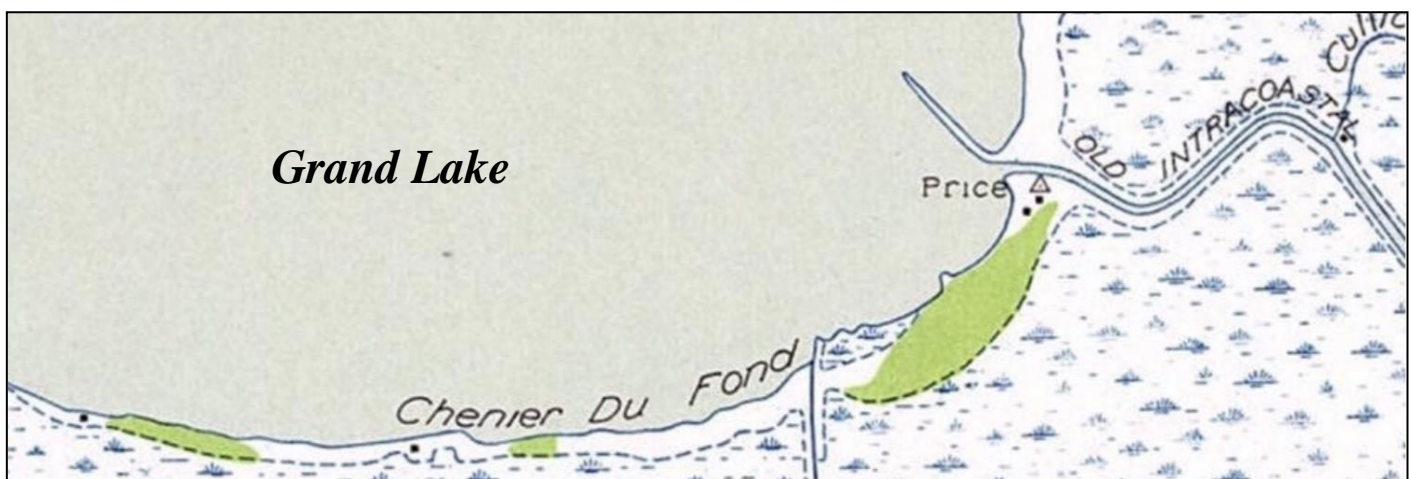
The site measured a quarter mile long, 400 ft wide and over 25 ft above sea level when surveyed in the 1930s. Waves caused by strong northerly winds had eroded much of the mound. Only a portion of the alligator's torso, tail and two limbs remained.

Archaeologist Dr. Fred B. Kniffen dated the site to the late Plaquemine period (A.D. 1200 - 1700). Dr. Kniffen didn't attribute the mound to the local Atakapa citing its "symmetry and size" made it too complex for such a tribe. This idea was supported by the fact that the remaining Native Americans in the area claimed to know nothing about the mounds origin or purpose. It was thought the mound was constructed during a single lifespan and that environmental conditions had changed enough to make the site impossible to replicate in modern times.

By the 1940s the Alligator Mound was completely gone, having been removed by barge to be sold as road and fill material. Destruction of this site highlights the sad fate of the many shell ridges and diminutive cheniers once common throughout the Gulf Coast region.

We can only speculate as to the cultural significance behind this particular choice of effigy design. The Atakapa tribe was said to hold the alligator in high regard; valued for its protein rich meat and versatile hide. Natives also collected natural oils from the alligator, prized for its mosquito repellent properties.

Archaeologists now believe the Morton Shell Mound on Weeks Island (south of Avery Island) is arranged in the form of an alligator. This observation was made after the site was surveyed in the latter part of the twentieth century.





Large kitchen midden, or shell heap, on Chenier du Fond, south of Grand Lake, Cameron Parish, Louisiana.

Alligator Mound on southeast corner of Grand Lake, Cameron Parish, Louisiana.



Chenier du Fond after the removal of the Alligator Mound. (c.1950)

New Wilkinson County Mound Exhibit Explores Louisiana and Mississippi Mound Sites

By Meg Kassabaum, University of Pennsylvania

The Wilkinson County Museum in downtown Woodville, Mississippi, is home to a newly installed exhibit that discusses the pre-contact Native American occupation of the region. This exhibit was curated by members of the Smith Creek Archaeological Project (SCAP), a research project and archaeological field school run through the University of Pennsylvania, in collaboration with the Wilkinson County Main Street Association.

It opened in June 2019 and is designed to educate both locals and tourists about Native American mound sites in Louisiana and Mississippi. It emphasizes the importance of protecting these sites and respecting past and present Native communities in the area.

Following Mississippi Mound Trail excavations in 2013, SCAP has conducted major excavations since 2015 at Smith Creek, a Native American mound-and-plaza center in Wilkinson County. Smith Creek was occupied at various times between at least 200 BC and AD 1300 and SCAP excavations have revealed an enormous amount about the range of activities that constituted daily life over this extensive period of time. Much like the town of Woodville, Smith Creek and other surrounding mound sites were once thriving communities. The Wilkinson County Mound Exhibit is designed to connect visitors with the past inhabitants of their shared land by emphasizing familiar activities.

We encourage visitors to consider how a common landscape has led to similar lifeways through time, such as hunting, fishing, and cooking similar game, using familiar vegetation and natural resources, and constructing communal and ritual structures. There are three cases displaying artifacts from sites in Wilkinson County. One contains ceramic sherds, one contains stone tools, and one contains artifacts related to food preparation activities. Two replica vessels – a pot and a plate – were created by artist Tammy Beane and help connect the fragmentary archaeological remains with recognizable objects. The cases are surrounded by a series of panels that construct a timeline of moundbuilding cultures in the Lower Mississippi Valley from 6000 BC to the historical period. Each panel details the development of four key cultural

traits – social organization, subsistence, architecture, and technology – as well as a case study of a mound site in either Louisiana or Mississippi. An exhibit brochure explains these traits, as well as SCAP and the Louisiana and Mississippi Mound Trails, and an activity booklet helps kids explore the exhibit through a series of fun activities.

The Wilkinson County Mound Exhibit is open and free to the public, so go check it out in downtown Woodville, Mississippi!



View of the new Wilkinson County Mound Exhibit in downtown Woodville, MS.



Visitors view artifacts from Smith Creek and other nearby sites during the June 2019 opening event.

LOUISIANA ARCHAEOLOGY IN THE MEDIA

Archaeologists unveil evidence of lost mound

By Sabrina Robertson

The Natchez Democrat, July 27, 2019

NATCHEZ, Miss. (AP) — How many mounds are located at the Grand Village of the Natchez Indians?

Up until very recently, the obvious answer would have been three, researchers said during a presentation at the Grand Village on Thursday evening. However, their recent studies of the land indicate otherwise.

The face of the Grand Village has changed over centuries of erosion, plowing and other work done on the site, Grand Village director Lance Harris said, adding ongoing archaeological studies may change the Grand Village once again — this time restoring some of what was lost.

Thursday (July 18) evening, Vin Steponaitis, a professor of archaeology and anthropology at the University of North Carolina at Chapel Hill, presented maps from the early 1700s that show a cluster of at least five mounds on the Grand Village site where only three mounds are still visible today. "There are two missing mounds here that there's bound to be evidence of, somewhere," Steponaitis said.

Steponaitis said some maps and early writings reference structures sitting on top of Mounds B and C, including a house for the Natchez chief and a Natchez temple, while mound A is believed to have been abandoned before the Natchez Indians ever arrived.

In 1730, the French Colonial militia laid siege to the Natchez village and took refuge in forts on St. Catherine's Creek, Steponaitis said. The French may have repurposed the temple mound as a military headquarters and used an adjacent mound where an "old temple" stood as a field hospital for the wounded, Steponaitis said.

The National Park Service recently awarded an American Battlefield Protection Program grant for the University of Mississippi Center for Archaeological Research in collaboration with the Grand Village to do an extensive study on the site. Tony Boudreaux, the director of the Center for Archaeological Research and associate professor of anthropology and the University of Mississippi, said he and a team of archaeologists used radar sensors that send signals into the ground to locate anomalies in the soil.

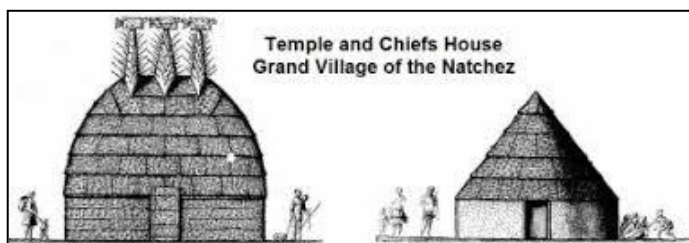
During this study, Boudreaux said he was able to pinpoint where one of the mounds might be, and after some digging found marble-like patterns in the dirt that resemble areas where natives may have dislocated earth from one area and dumped it in a new location — which they would have done to construct a mound. "We think we have found the northernmost missing mound," Boudreaux said.

Harris said The Grand Village is fundraising to expand its facility to better accommodate visitors and tell the story of the original Natchezean as some of the information that the center currently displays has changed. "We plan to use this information," Harris said. "It's not just something we're going to take and stick on a shelf somewhere, talk about it every now and again and then forget about it. That is not the case at all. We have some exciting plans for the Grand Village of the Natchez Indians."

Harris said the Grand Village is working on an approximately \$6 million development plan that would increase the visitor capacity for the museum and auditorium, revamp welcome signs leading into the Grand Village and perhaps re-create structures that once stood on top of the mounds.

After further studies at the Grand Village, Harris said ghost mounds, or markers, could be used to depict where the missing mounds were located. A new virtual reality exhibit could open later this year, Harris said, which would also depict missing features on the site.

"There are powerful, powerful stories here," Harris said. "The story of colonization and the story of conflicts with the French colonists sits right here at the Grand Village of the Natchez Indians. It's an exciting story that I'm looking forward to telling in the future."





Tony Boudreaux, second from left, Director of the Center for Archaeological Research discusses plans for the day with Wilson Utley, Erin Jessup, Riley Freeman and Stephen Harris at the site of an archaeological dig at the Grand Village of the Natchez Indians. Photo by Ben Hillyer

Archeologists Stephen Harris from University of Mississippi hands intern Riley Freeman a shovel at an archaeological dig at the Grand Village of the Natchez Indians. Photo by Ben Hillyer



In July 19 2019 photo, archaeologist intern Erin Jessup uses a trowel to shave off a layer of dirt in a pit she and a group of archaeologists from the Center for Archaeological Research at the University of Mississippi have dug at the Grand Village of the Natchez Indians. Photo by Ben Hillyer

By Touch Alone

By Charles Lussier, Baton Rouge Morning Advocate

June 13, 2019

Students at Louisiana School for the Visually Impaired in Baton Rouge are getting an introduction this summer to archaeology, including a taste of what it's like to participate in an excavation.

This mock dig began Wednesday and finishes Thursday, the high point of a three-week summer camp at the school on Brightside Lane. Twenty-six students are participating in the camp, though only a dozen were present Wednesday.

The students were feeling their way through a series of wooden boxes with layers of mulch, dirt and sand. Lurking underneath somewhere was an array of artifacts, ranging from pennies and bottles to historic pottery and tools. The different layers are meant to take students back in time, to before the arrival of Europeans in the Americas.

The project emphasizes “not only how important archaeology is, but also Louisiana history,” said Val Feathers, outreach coordinator with the Division of Archaeology, an arm of the state's Department of Culture, Recreation and Tourism.

Melanie Brenckle, LSVI's principal, said she was looking for something different to try for this year's summer camp, something that would allow students to “really experience the things they'd been learning in the classroom during the year.”

Feathers helped create the archaeology curriculum, trying it out for the first time last August with students at Glasgow Middle School in Baton Rouge. She spent two months adapting the lessons for LSVI children, who are either blind or have other visual impairments. She said she thought she'd have to move slower and spend more time on each lesson, but that hasn't been the case at all. “I have had to come up with more lessons,” Feathers said. “The students are just eating it up.”

Allen Crosby, 16, said he was having a good time. “Yeah, I like being outside and digging in the dirt,” Crowley said. “I like discovering stuff. It's better than doing oil changes. You don't get oil on you.”

It wasn't long Wednesday before Crosby was covered in dirt. “Want a hug, Mr. Ellers,” said Allen Crosby, stretching his dirty hands out to the school employee.



From left, Will Smith, 15, and Allen Crosby, 16, look through mulch and dirt as Steve Fullen, executive director of ANHA, holds the screen as visually impaired students involved in a three-week summer camp at the Louisiana School for the Visually Impaired participate in a “mock” archaeological dig Wednesday June 12, 2019, in Baton Rouge, La. This done with the Division of Archaeology, a branch of the state Department of Culture, Recreation & Tourism. Large boxes were created and gridded into quadrants with dirt of where artifacts were buried. A group of students worked in each quadrant, excavating and screening the dirt while checking it for artifacts.

-photo by Bill Feig

“I went to school so I didn’t have to dig in the dirt every day,” joked David Ellers, who works in information technology. “That’s funny. I went to school so I would have to work in the dirt,” responded Steve Fullen, the Atchafalaya National Heritage Area executive director who was helping with the summer camp.

Evan Hoffmann, 11, said he’s enjoying learning about archaeology, but he’s not sure about it as a career. He’s also interested in electrical engineering, construction, gaming and YouTubeing. The best part of Wednesday’s dig, he said, was finding a big bone. “I want to find a lot of bones,” Hoffman said. “They’re cool because they’re creepy.”

Charles "Chip" McGimsey, state archaeologist, was on hand Wednesday. He said that during the final days of the camp the students will have to analyze the results of their dig. “The final product for them will be to come up with a story for what they found in each box,” McGimsey said. “What’s the history, what’s the difference between the layers ... just like any archaeologist would do.”

McGimsey said that in the right circumstances any one of the LSVI students participating in the camp could one day be an archaeologist, though doing excavation work might be hard for someone completely blind. Nevertheless, the field is broad, offering many niches. And those with a strong sense of touch have an advantage, he said. “You get very sensitive to feeling for changes in the dirt and what not,” he said. “Archaeology is a very tactile science.”



*From left Krista Ricard 16, Megan Kenny, archaeologist, and Tianna Blandin, 17, check out a find from the dirt they were looking through as visually impaired students. Large boxes were created and gridded into quadrants with dirt of where artifacts were buried. A group of students worked in each quadrant excavating and screened the dirt checking it for artifacts.
-photo by Bill Feig*



*Austin Dugars checks through what is left in the screen during the SVI mock archaeological dig Wednesday in Baton Rouge.
-photo by Bill Feig*

SHOWCASING LOUISIANA: Group uncovers forgotten plantation cemeteries

Armed with a machete and a sense of responsibility, Martin's crusade to save these graves is infectious.

By **Graham Ulkins** | May 30, 2019 at 5:13 AM CDT – WAFB TV, Baton Rouge, LA

WEST BATON ROUGE PARISH, La. (WAFB) - There's something hidden in the sugarcane fields of West Baton Rouge Parish. Just beyond seemingly random tree lines are the graves of thousands of people. Many were slaves that worked the earth where they now lie. Others are their descendants. One group is working to make sure they're never forgotten.

Debbie Martin runs the Westside Cemetery Preservation Association. She recently took me to a handful of hidden cemeteries she's cataloged over the last several years. "If you look across the land, and you see all the ripples in the ground, that indicates burials," she said as we stood a few yards off River Road in dense vegetation.

Poplar Grove cemetery is just a five-minute drive from Port Allen City Hall. The old church that once stood nearby is long gone. Like most plantation cemeteries, Poplar Grove now sits on private property, flanked by industry and agriculture. There are no signs and no fences, yet there are likely hundreds of graves. The oldest *known* burials date back to the early 1900s. Most are unmarked, and some stones are handwritten. More recent graves have traditional headstones.

"You have quite a few veterans in this cemetery. World War I and World War II veterans," Martin explained.

She's made it her mission to find out everything she can about the souls resting there. Several members of the Grimes family are among the 31 graves she's added from Poplar Grove to findagrave.com.

But that's just one of at least 17 plantation cemeteries Martin has documented. "With all of the African-American cemeteries in this parish, we've documented over 3,500 burials," she said.

She believes there are many more burial grounds yet to be uncovered, and many permanently lost to Mother Nature or industrial development. "I'm working with other groups, and we're trying to form a nationwide database of these cemeteries and the burials so families can trace their ancestors," Martin explained.

She's made it her mission to find out everything she can about the souls resting there. Several members of the Grimes family are among the 31 graves she's added from Poplar Grove to findagrave.com. But that's just one of at least 17 plantation cemeteries Martin has documented. "With all of the African-American cemeteries in this parish, we've documented over 3,500 burials," she said.

She believes there are many more burial grounds yet to be uncovered, and many permanently lost to Mother Nature or industrial development.

"I'm working with other groups, and we're trying to form a nationwide database of these cemeteries and the burials so families can trace their ancestors," Martin explained.

Thousands of cars pass daily through the interchange where US-190 meets LA-415. Most drivers have no idea they're just feet away from St. Catherine cemetery, which sits in that corner, shrouded by overgrown trees.

The same goes for Chamberlin cemetery further north off 415. Silvery cemetery sits in a soybean field off Rosedale Rd. The vegetation there was so dense on our recent trip that we couldn't even go beyond the tree line.

But others are in better shape thanks to Martin and her volunteers. Orange Grove and Ashland cemeteries are now fully owned by St. Mark Baptist Church. It's a feat that recently helped get the church onto the National Register of Historic Places.

"Most people forget 'em," said LeeDell Woods Jr, who serves on the Board of Deacons. "They don't want to forget 'em, but time passes." Many former St. Mark members are buried in the two cemeteries along with their families. New burials are still allowed.

It was in Ashland cemetery where Woods first met Martin. "Ms. Martin just showed up with boots on, and she proceeded to go throughout... I said, 'Ms. Martin, you're gonna get bitten.' She's just a brave lady," he recalled. Armed with a machete and a sense of responsibility, Martin's crusade to save these graves is infectious.

“There's artisans in this cemetery, brick builders in this cemetery, talented people in this cemetery (who helped build Port Allen), and their stories should be told, so I joined her group,” Woods said.

The Association organizes clean-up days and works to spread their values of dignity and respect for all people – regardless of their status in life. “It moves you to think all of these people in this cemetery,” Martin said as she stood in Ashland. “They have a story to tell. They lived life just like all of us lived life, and this is what happens in the end.”

But she and Woods both worry about what may happen when they're no longer around. “I'm 65. I don't know how long I got on this earth, but we need somebody else to take the torch after a while. I can do it for a little while, but other people, other families that live in this area need to step it up,” Woods said.

“Many of these (cemeteries) we could never restore,” Martin added. “We're fighting a losing battle most of the time, but that doesn't mean we should allow them to be destroyed.”

That's why they're making noise now. They hope to teach younger generations what lies beyond those tree lines, and who lies below the brush.

The group has had a bit of success in the Louisiana Legislature, helping pass a bill in 2018 that created the Slavery Ancestral Burial Grounds Preservation Commission.

At the very least, Martin wants a sign placed at each cemetery explaining who lies there. For more information or to volunteer your time, contact Debbie Martin through the group's Facebook page, or by emailing savethegraveswbrp@gmail.com



Graham Ulkins and Debbie Martin stand in Poplar Grove cemetery. (Source: WAFB-TV)



Chamberlin cemetery off LA-415. (Source: WAFB-TV).

Unearthing homestead of early Acadian ancestor helps fulfill one Canadian's life

By Claire Taylor, Staff Writer, The Acadiana Advocate, Aug. 18, 2019

PORT HILL, Prince Edward island, Canada — When Claude Henry Arsenault returned to his hometown of Port Hill after a more than a 30-year absence, he didn't know what to do with himself.

A friend, also an Arsenault, took him to an archaeological site where the provincial government had just begun excavating the remains of the one-time home of one of their ancestors. The site was where Pierre Arsenault, the founder of the first settlement in the area, lived some time between 1728 and 1758, before the Acadian expulsion by the British.

When Claude Arsenault visited the site at Pointe-aux-Vieux on the shore of Malpeque Bay, it changed his life. "I became intrigued," he said, saying it took over his body and soul. "I became enthralled with it. It has become the reason I live." In the 10 years since he first learned of the dig, Claude Arsenault, now 71, has become an expert volunteer. He's helped uncover hundreds of artifacts, from dozens of mini-balls for shooting birds and small game to a stone with a hole in it.

Arsenault, who was attending a family reunion as part of Congrès Mondial Acadien, said Saturday that unearthing a religious artifact with a painting on it was a profound experience that gives him goose bumps still today as he talks about it. "I felt the whole entire world stand still," Arsenault said. "I felt like I had been struck by a bolt of lightning. It was an immediate connection with an ancestor."

Officials stumbled upon the Pierre Arsenault site in 2017. Helen Kristmanson, Director of Aboriginal Affairs and Archaeology with the provincial government of Prince Edward Island, talked about the accidental discovery of the site in a presentation to the family reunion Saturday. She said she was working with Mi'kmaq Indians who had lived across the bay on Lenox Island when strong winds forced their boat ashore at Gillis Point.

-Continued on next page



Winter storms in 2010 destroyed part of the Pierre Arsenault excavation site near Port Hill, Prince Edward Island, Canada. The site is shown in this Aug. 17, 2019 photo by Claire Taylor.

Continued from previous page

As Kristmanson and the others walked along the beach, someone noticed an indentation in the ground. Upon inspection, she identified artifacts that told her it was an early Acadian site.

Samuel Holland in 1764-65 made a map of the area, noting homes and settlements of the Acadians who had been removed by the British

Kristmanson's site was on the map identified as a settlement founded by Pierre Arsenault, his son, Charles, and family friend Jean Lambert. It started with 17 people in two houses and grew to more than 32 homesteads with more than 200 residents, including Richards, Poirriers and Blanchards.

The house, by the time it was discovered, had collapsed into the cellar, most of the wood rotted away. Unlike Acadians from areas like Grand Pre', Nova Scotia, where the British burned the homes as they expelled the Acadians, the homes on Prince Edward Island were spared. The artifacts left behind are largely small pieces of pottery and glass.

The Arsenault house was next to a church and cemetery that were lost to storms and erosion, Kristmanson said, "And we nearly lost the house as well."

In December of 2010, three big storms hit the coast within three weeks, claiming about 15 feet of the Arsenault site. The excavation, she said, became a salvage operation.

Although much was lost, much was saved, and the remains of the home, including animal bones and broken glass, provide insight into how the early Acadians lived. An ink well proves someone in the home was able to read and write. Animal bones show they ate small game, fish and song birds.

"I want you to understand how precious this information is for me and for you," Kristmanson told dozens of Arsenault descendants from Canada and the U.S., in a packed King George Hall. Excavation at the home is complete.

Kristmanson's team recovered more than 16,000 artifacts including more than 1,000 hand-forged nails, door brackets, knife handles made of bone, straight pins, window glass and evidence they had access to goods from Europe, including stemmed glasses.

The site, she said, was filled in and planted to remove evidence the archaeological team was ever there. A stone mason in 2011 built a stone wall on the shoreline to protect the site from further erosion.

This is one of several archaeological sites, including homesteads of the early Acadians, the Canadian government has excavated. While money is tight, the government pays Kristmanson's salary and one staff archaeologist. She relies largely on volunteers and students.

In Louisiana, there's only one project to try to find an early Cajun settlement headed by Marc Rees, a professor at the University of Louisiana at Lafayette. Rees is searching along Bayou Teche for the first camps, homes, or the graves of Joseph "Beausoleil" Broussard and his brother Alexandre and others they led to Louisiana in 1765 following the expulsion from Acadie. It's called the New Acadia Project.

"It has been recorded forever that this is where they settled," Rees said recently. Historian Carl Brasseaux pointed out in a 1987 book that a priest buried more than 30 people at three camps from the first group to arrive in New Acadia in 1765.

"Unfortunately, there's no map," Rees said. So the first step is searching for and identifying sites that may be the Broussard camps and graves. Field work started in the summer of 2014, he said, with more than 24 archaeological sites identified along a 10-mile section of Teche Ridge between St. Martinville and New Iberia.

"They have a footprint. They found something," said Donald Arceneaux, who splits his time between Lafayette and Idaho and is on a committee supporting the New Acadia Project. "We haven't found a house or buried remains." When Rees finds something, he marks it to do further research as Kristmanson did, Arceneaux said. "And it's not cheap." Arceneaux is among the Louisiana residents who made the trek to Canada for Congrès Mondial Acadien and attended Kristmanson's presentation.

Back in Louisiana, Rees has discovered anomalies in the ground using remote sensing, that could be unmarked graves that he hopes to further study. He found prehistoric sites that are 1,300 years old because the high elevation of Teche Ridge made it the best place for natives to live 1,300 years ago and for the Acadians 250 years ago.

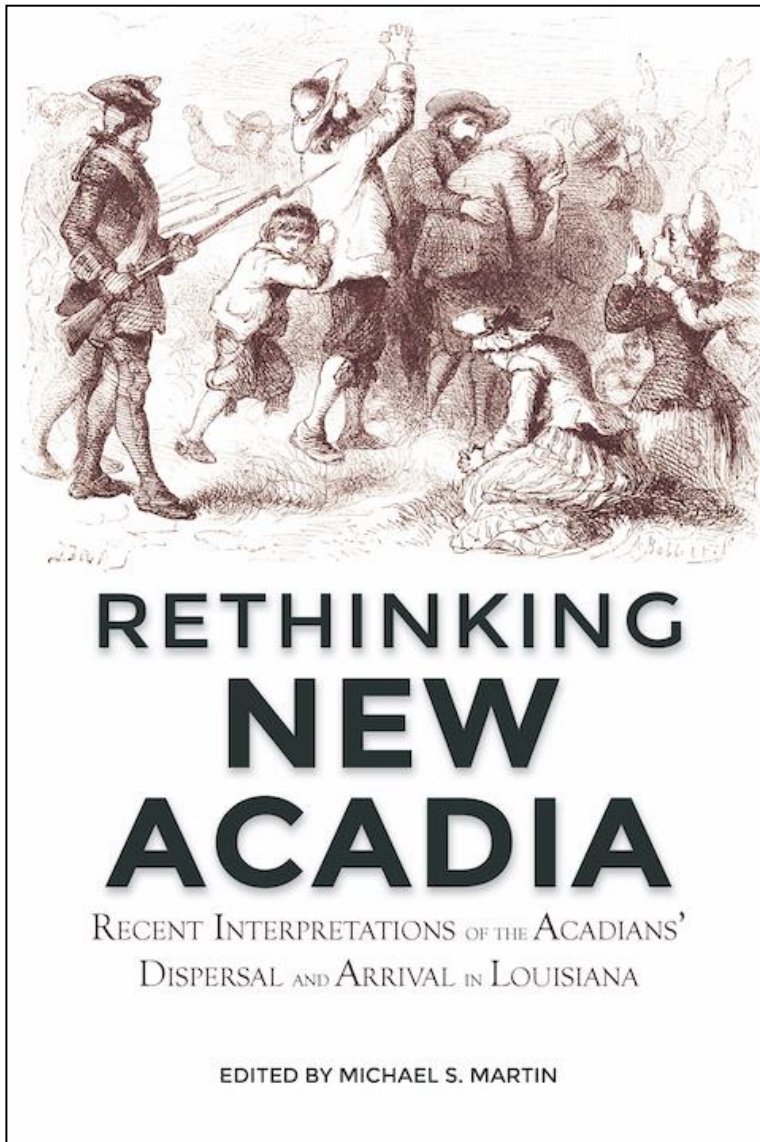


Donald Joseph Arceneaux of Lafayette, La., and Idaho, visits Aug 17, 2019 with Claude Arsenault of Port Hill, Prince Edward Island, about a dry sink artifact Arsenault found excavating the Pierre Arsenault home site. Photo by Claire Taylor.

Helen Kristmanson, director of aboriginal affairs and archaeology with the Prince Edward Island province in Canada, speaks with an Arsenault following her presentation, Aug. 17, 2019 at Port Hill Prince Edward Island. Photo by Claire Taylor



BOOKS OF INTEREST FOR LOUISIANA ARCHAEOLOGY



Rethinking New Acadia: Recent Interpretations of the Acadians' Dispersal and Arrival in Louisiana

Edited by Michael S. Martin

Rethinking New Acadia presents cutting edge research into and new ways of thinking about the dispersal of the Acadians and their arrival in southwestern Louisiana. This book is required reading for historians, genealogists, and anyone else interested in understanding Le Grande Dérangement more deeply than ever before.

Essays include:

"The Expulsion of the Acadians in a Broader Context" by John Mack Faragher (Yale University)

"The Acadian Refugees in France" by Jean-François Mouhot (Les Courmettes, France)

"The Environmental Context: Bayou Teche as the Acadians Found It" by Shane Bernard (McIlhenny Company)

"The Initial Acadian Settlement: A New Look at its Location in the Attakapas" by Donald J. Arceneaux (independent scholar)

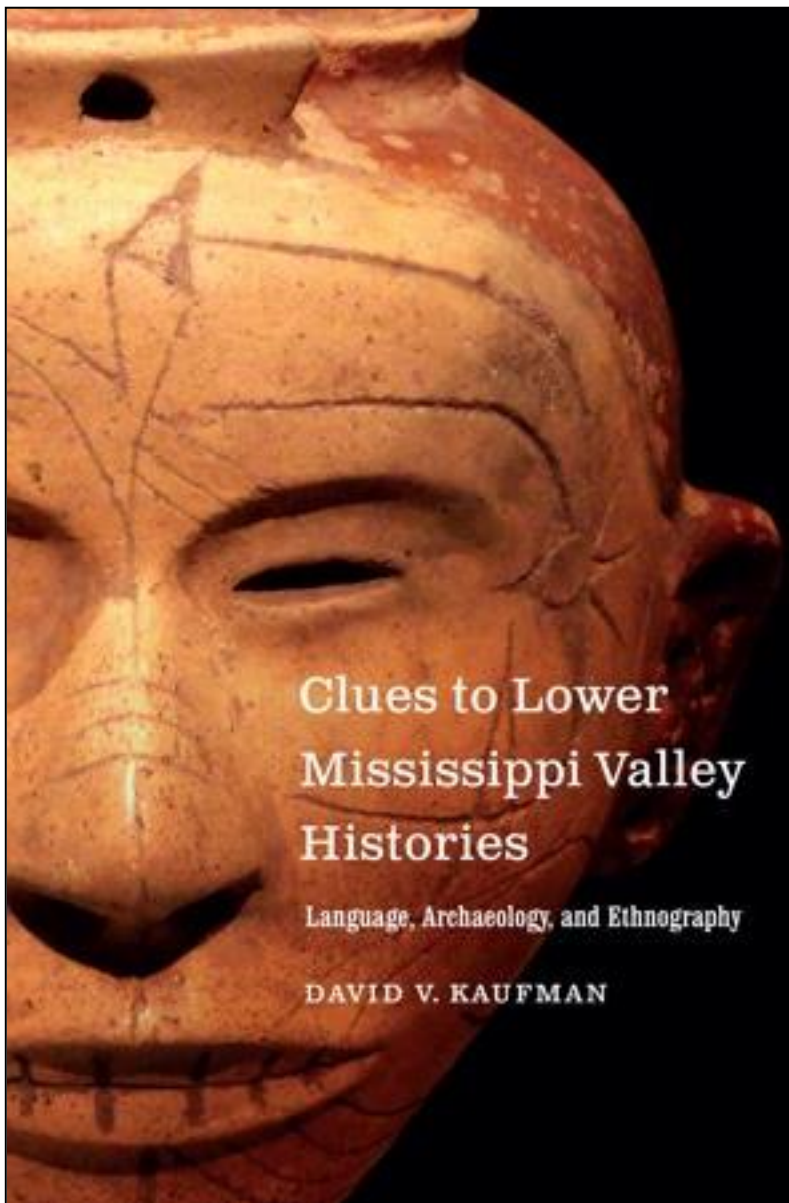
"Finding Nouvelle Acadie: Lost Colonies, Collective Memory, and the New Acadia Project" by Mark Rees (University of Louisiana at Lafayette)

"Indians, Settlers, and Slaves on a Colonial Frontier: The Acadians among Other Peoples" by Daniel J. Usner (Vanderbilt University)

ISBN: 9781946160461
Softcover, 136 pp., © 2019

\$19.95 available at
<https://ulpress.org/collections/acadian-history-and-culture/>





**Clues to Lower Mississippi Valley Histories:
Language, Archaeology, and Ethnography**

By David V. Kaufman

University of Nebraska Press

240 pages, 3 photographs, 9 illustrations, 2 maps,
16 tables,

1 appendix, index

Hardcover and eBook, August 2019, \$75.00

<https://www.nebraskapress.unl.edu>

In *Clues to Lower Mississippi Valley Histories* David V. Kaufman offers a stunning relational analysis of social, cultural, and linguistic change in the Lower Mississippi Valley from 500 to 1700. He charts how linguistic evidence aids the understanding of earlier cultural and social patterns, traces the diaspora of indigenous peoples, and uncovers instances of human migration. Historical linguistics establishes evidence of contact between indigenous peoples in the linguistic record where other disciplinary approaches have obscured these connections.

The Mississippi Valley is the heartland of early North American civilizations. The region is a rich and diversified center of transportation for every part of eastern North America and to Mesoamerica. The Lower Mississippi Valley region emerged as the home of the earliest mound-building societies in the Americas and was home to some of the most impressive kingdoms encountered by Spanish and French explorers. The languages of the region provide the key to the realities experienced by these indigenous peoples, their histories, and their relationships. *Clues to Lower Mississippi Valley Histories* focuses on relationships that constitute what linguists call a *sprachbund* (language union), or language area. Kaufman illuminates and articulates these linguistic relationships through a skillful examination of archaeological and ethnohistorical data.

Clues to Lower Mississippi Valley Histories examines the relationship between linguistics and archaeology to elucidate the early history of the Lower Mississippi Valley.

MEETINGS, FIELDWORK, EXHIBITS, WEBSITES, ETC.



Southeastern Archaeological Conference

76th ANNUAL SEAC MEETING November 6-9, 2019 Jackson, Mississippi

The 2019 annual meeting will bring SEAC back to the Magnolia State for a third time, with this being its second time in Jackson (1991 was the first). The meeting hotel is the Jackson Marriott (200 E. Amite Street). For single and double occupancy, the nightly room rate is \$139 (plus 11% local and state tax, plus \$0.75 occupancy tax). The cutoff date for this rate is October 16. Room reservations can be made by phone (601-969-5100). Be sure to let them know that you are with the Southeastern Archaeological Conference when placing reservations. If you have any questions, please contact any one of the conference organizers; Jay Johnson, Maureen Meyers, or Tony Boudreaux at the Department of Sociology and Anthropology, University of Mississippi, University, MS 38677.



The 2020 annual meeting of the Louisiana Archaeological Society will be a joint meeting with the Mississippi Archaeological Association (MAA).

This meeting will be held in Natchez, Ms. February 7-9, 2020.

The Hotel Vue on the bluff overlooking the Mississippi River and bridge across it will be the site of this meeting in Natchez.

Plans are still in development.

Watch for updates and more information on the LAS and MAA websites and Facebook pages.

Program chairs for the meeting are:

Rachel Watson (LAS) – rwatson@crt.la.gov

Lance Harris (MAA) – lharris@mdah.ms.gov

We invite you to join us for the joint 62nd Caddo Conference and 27th East Texas Archeological Conference on February 28 and 29, 2020 in Tyler, Texas, on the University of Texas at Tyler campus.

The Caddo Conference rotates annually among Texas, Arkansas, Oklahoma and Louisiana to promote and to stimulate interest in the archeology, history, and ethnology of the Caddo region. The East Texas Archeological Conference is hosted annually at the University of Texas at Tyler to bring together people interested in the archeology and cultural heritage of East Texas. About every 4 years, they are hosted jointly in Tyler.

This year's conference will be in support of the Caddo Nation and rebuilding of facilities at Caddo Mounds State Historic Site recently damaged by a tornado. The organizers will be announcing keynote speakers, public speakers and associated gatherings over the next several months.



9:00 a.m.	5K Teddy Bear Run/Walk
9:30 a.m.	Holt's Hound Dog Hoopla Dog Show
10:00 a.m.	Prehistoric Mound Tour <small>(meet @ Rolling Fork Visitors Center)</small>
11:00 a.m.	Tim Johnson "Elvis"
11:30 a.m.	Chuckburger Eating Contest
Noon	Jewel Bass and These Days
1:15 p.m.	Mississippi Snakes <small>(S-I library courtyard)</small>
1:30 p.m.	Eden Brent
2:00 p.m.	Prehistoric Mound Tour <small>(meet @ Rolling Fork Visitors Center)</small>
3:00 p.m.	Luckenbach
4:30 p.m.	Keith Johnson & Big Muddy Band
6:00 p.m.	Paul Thorn
7:30 p.m.	Fireworks!

9 a.m. - until Arts, Crafts & Food Vendors
 11 a.m. - 4 p.m. Activities for Children
 Chainsaw carving by Artistry in Wood all day

WWW.GREATDELTA BEARAFFAIR.ORG



The Great Delta Bear Affair will be held in Rolling Fork, Mississippi on October 26, 2019.

Among the activities will be tours of mound sites in the Mississippi Delta led by Sam Brookes. Details available at the event's website.

**Louisiana Archaeological Society
Membership Application and Dues Renewal**

For Year _____

Membership Category _____

Regular.....	\$20.00	_____
Associate.....	\$5.00	_____
Student.....	\$12.00	_____
Life.....	\$200.00	_____
Sustaining.....	\$300.00	_____
Institutional (Museums, Libraries, Agencies (etc.)	\$20.00	_____
	Subtotal	_____

Member Information

Name _____

Organization/Affiliation _____

Address _____

City _____ State _____ Zip _____

Phone Number _____

E-mail _____

Associate Member Name(s): _____

Back Issues of LAS Bulletins are \$8.00, but discounts are available for large orders. Out of print bulletins are available at the LAS website for free download.

- | | | | | |
|---------------------------|----------------|----------------|----------------------------------|----------------|
| #1- 1974 - out of print | #13 - 1986 () | #25 - 1998 () | #37 - 2010 () | #41 - 2014 () |
| #2 - 1975 - out of print | #14 - 1987 () | #26 - 1999 () | #38 - 2011 () | #42 - 2015 () |
| #3 - 1976 - out of print | #15 - 1988 () | #27 - 2000 () | #39 - 2012 () | #43 - 2016 () |
| #4 - 1977 - out of print | #16 - 1989 () | #28 - 2001 () | #40 - 2013 () | #44 - 2017 () |
| #5 - 1978 - out of print | #17 - 1990 () | #29 - 2002 () | | |
| #6 - 1979 - out of print | #18 - 1991 () | #30 - 2003 () | Special Publications | |
| #7 - 1980 () | #19 - 1992 () | #31 - 2004 () | #1 Stone Points of NW LA \$4 () | |
| #8 - 1981 () | #20 - 1993 () | #32 - 2005 () | #3 Radiocarbon Dates \$4 () | |
| #9 - 1982 () | #21 - 1994 () | #33 - 2006 () | #4 Petit Anse Project, \$40 () | |
| #10 - 1983 - out of print | #22 - 1995 () | #34 - 2007 () | | |
| #11 - 1984 () | #23 - 1996 () | #35 - 2008 () | | |
| #12 - 1985 - out of print | #24 - 1997 () | #36 - 2009 () | Subtotal | _____ |

Optional Tax Free Donation: Roger T. Saucier Memorial Fund _____

Send Payment to:
Julie Doucet, LAS Treasurer
7784 Castello Rd
Ethel, LA 70730
www.laarchaeology.org

Membership,
Publications, and Donation
Total: _____
Make Checks Payable to:
Louisiana Archaeological Society

Information for Subscribers

The Newsletter of the Louisiana Archaeological Society is published three times a year for the society. Subscription is by membership in the Louisiana Archaeological Society (LAS). Annual membership dues are \$20 for individuals, libraries, and institutions, \$5.00 for associates (relatives of individual members), and \$12 for students. Life membership dues are \$200 for individuals. Sustaining membership dues for individuals or institutions are \$300. In addition to the newsletter, members receive one issue per year of the LAS bulletin *Louisiana Archaeology*. Membership requests, subscription dues, changes of address, and back issue orders should be directed to the Treasurer. Unless otherwise indicated, opinions stated herein are those of the editor or authors and do not necessarily reflect society policy.

Information for Contributors

Send all notes, news, graphics and other communication to:

Dennis Jones, LAS Editor

1801 Ormandy Dr. Baton Rouge, LA 70808

archaeoman.jones@gmail.com

Articles should be submitted by email, preferably in Microsoft Word. Digital images are encouraged. Please send in TIF, JPG, or Word format. Contact editor via email with all questions.

LAS OFFICERS

President- Jeff Girard, Shreveport

Vice President-Amanda Evans, Baton Rouge

Secretary-Megan Kenney, Baton Rouge

Treasurer-Valerie Feathers, Baton Rouge

Editor-Dennis Jones, Baton Rouge

Webmaster-Paul French, Natchitoches



Editor – Louisiana Archaeological Society
1801 Ormandy Dr.
Baton Rouge, LA 70808