

Louisiana Archaeological Society

NEWSLETTER OF THE LOUISIANA ARCHAEOLOGICAL SOCIETY

Vol. 4, No. 1



January 1977

IN THIS ISSUE:

The Good, The Bad, and The Ugly ... 1; Editorial Preface ... 2 ; Policies and Goals for Cultural Resource Management ... 4; A Crisis Indeed ... 5 ; Third Annual Meeting of the LAS ... 6 ; LAS Membership... 15.

"THE GOOD, THE BAD, AND THE UGLY",
REFLECTIONS FROM A PAST PRESIDENT

by

Jon L. Gibson
LAS Member

With the memories of the best yet annual meeting still fresh in mind, I pause to reflect on the past year. It has been an eventful year, and it has been good. The Monroe conference was excellent. I enjoyed meeting during the year with several of the chapters, Imperial Calcasieu and Delta. Turnouts for both were impressive. The executive committee get-together at the Grand Village of the Natchez reminded me of a mini-annual meeting. And the finale at Lake Concordia lent extraordinary credence to the fact that man cannot live by bread alone, he must have catfish. A casual gathering of immediate past, then present, and future presidents at Hodges Gardens

The newsletter of the Louisiana Archaeological Society is published quarterly by the Society from its editorial office at the University of Southwestern Louisiana, Department of Social Studies, Lafayette, LA 70504. Unless otherwise indicated, opinions stated herein are those of the editor or other individuals and do not necessarily reflect Society policy.

produced some discussion of long-term plans and goals for the Society and for Louisiana archaeology in general. Correspondence was ever flowing. The officers were in constant contact. Members patiently waited the bulletin, and the wait was worthwhile. Members, I believe we have witnessed the full maturation of the Louisiana Archaeological Society in 1976. I wish to thank all of you for making this possible.

Yes, it has been an eventful year, and it has been bad. Louisiana Antiquities legislation was tested and came out second-best. Some archaeological surveys have shown the continued widespread destruction of archaeological sites. The traditional reluctance to publish archaeological reports seems to have continued. The message of archaeology has been slow in getting to the public via agencies devoted to that purpose. Crisis after crisis has effectively suppressed any long-range planning and goal-formulation.

The year has indeed been eventful, and it has been ugly. Governmental reorganization has led to uncertainties about the effectiveness of our state survey and commission. Political activism, so often rejected by archaeologists, will be essential to come to grips with this major problem. Leadership within the profession must be evidenced. Petty quarrels among archaeologists must be put aside to move archaeology forward.

We have done a lot, we can be proud. There is still much to do. President Gagliano, you have a large responsibility, but with the support of the membership, I know it will be met with vigor and proper direction. Thanks, LAS members for making my year as president one as I will remember and cherish always.

EDITORIAL PREFACE

Bulletin Published. Louisiana Archaeology, Number 2 rolled on the presses the day before the annual meeting. Its 230 pages include articles on "Louisiana's Historic Indians" (Kniffen), "Chitimacha Basketry" (Gregory and Webb), "Mounds Plantation..." (Webb and McKinney), "The Poverty Point Site: North Sector Excavations" (Kuttruff), "The Poverty Point Culture, as Seen From Southeastern Texas" (Patterson), "Prehistoric Settlement Patterns of the Young's Bayou Drainage..." (Smith), "Fire Pits at Mount Bayou..." (Gibson), and "The Cicada in Southeastern Archaeology..." (Hunter). The bulletin seems to have been a long time in coming, but actually was only one year almost to the day after Bulletin 1. However, I believe that those of you who have seen the bulletin will agree it was worth the wait. It is fortunate that your editor is modest and keeps his pride in the Society suppressed; otherwise, he would compare the Louisiana bulletin favorably with any published anywhere in the country.

Bulletin Distribution. Bulletins were distributed at the annual meeting to those members who had paid 1975 dues. Our by-laws require that bulletins be given only to those members who are paid for a particular year and not merely to those who are current members. So some of you who joined for 1976

and 1977 will not automatically receive the 1975 bulletin. If you wish to receive a copy, please send \$10.00 to W.S. Baker, P.O. Box 637, Jonesville, Louisiana 71343. Bulletins will be mailed to all other 1975 members during February. Appended to the end of this newsletter is a membership list which indicates the kind of membership, whether dues were paid for 1975, 1976, and 1977, and whether bulletin was picked up or mailed. Please give this list careful scrutiny. If you believe a mistake has been made and that you are entitled to a bulletin but are not slated to receive one, please inform the treasurer, Baker, at the address provided above.

1976 and 1977 Bulletins. It is the editor's goal for 1977 to become current with the bulletins. This means publishing both 1976 and 1977 issues during 1977. I believe this can be done; our print shop is almost back into full operation and has just about caught up on its enormous backlog of work. The big Hiedelburg press is really a wonder to behold. We could become current with bulletins, that is, if the members will submit articles for publication. At present, I have only 2 for the 1976 issue; the Bel Site and Bayou Jasemine. Shame, shame! Franz you promised; Haag, you too; Hunter and Baker? The editor will solicit certain articles shortly; don't let the readership down. I will publish names.

The Year for Conferences. If the number of archaeological conferences is any indication, Louisiana is headed for a banner year in 1977. Please mark these dates on your calendar and plan to attend.

1. Louisiana Archaeological Society, Third Annual Meeting. Held at Howard Johnson's Airport West, Metairie, on January 15 - 16. Hosted by Delta Chapter and the University of New Orleans. Reports on this excellent meeting are contained in this newsletter.

2. Caddo Conference, 1977. To be held in Room 142, Arts and Sciences Building, Northwestern State University, Natchitoches, Louisiana, on March 25 - 27. Hosted by NSU and Hiram Gregory. For further information write: Dr. Hiram Gregory, Department of Social Sciences, Northwestern State University, Natchitoches, LA.

3. Society for American Archaeology, Annual Meeting. To be announced in later newsletter.

4. Southeastern Archaeological Conference. To be held at the College Inn, University of Southwestern Louisiana, Lafayette, LA on a date yet to be selected in October. Hosted by the University of Southwestern Louisiana and Dr. Jon Gibson (program chairman). For further information write: Gibson, P.O. Box 4-0198, USL Station, Lafayette, LA 70504.

POLICIES AND GOALS
FOR CULTURAL RESOURCES MANAGEMENT

by
Sherwood M. Gagliano
LAS President

The annual meeting, held in Metairie, Louisiana in January, provided convincing testimony to the health and vigor of the LAS. During the course of the meeting and its related social activities, many exciting projects and important needs were discussed. These included: 1) a summer field workshop; 2) society member participation in major excavations; 3) establishing new chapters; 4) membership drive; and 5) an organized public relations program. While each of these topics is important, I have chosen to discuss a subject which in my opinion has the highest priority. That is, the role of the LAS in developing a meaningful cultural resources management program for Louisiana.

For the last few years, there has been a growing awareness of the exceptionally rich prehistoric and historic heritage of our state. There is a realization of the value of historic and archaeological sites that is being reflected in plans for new parks, growing state and federal cultural resources programs, a public concern for the destruction of sites, and a generally enlightened public interest. The LAS is a part of this trend and to some extent has helped to stimulate it, but in a larger sense the movement is one result of the overall regional trend of rapid growth and development.

This rapid growth and development has resulted in "the archaeological crisis". Archaeological sites are being destroyed at an unprecedented rate as a result of land modification related to urban and industrial development, highway and utility line construction, agricultural land clearing, flood protection and drainage projects, navigation projects, mineral extraction activities, etc. This crisis has not gone unnoticed. There is a substantial national commitment toward conservation and preservation of cultural resources. This commitment takes the form of protective legislation, and equally importantly it provides for a positive program of inventory, evaluation, preservation, management, research, and public presentation. There is now a body of laws at both the state and federal level that recognize the value of cultural resources and provides procedures and funding for their management. Indeed, there is presently a commitment for a multi-million dollar cultural resource management program for Louisiana.

As in the case of most governmental programs, it would be foolish to allow our elected and appointed officials to develop policy and programs in a vacuum, without the benefit of public input into the decision-making process. The LAS has an important role to play in helping to fill this vacuum. Our society represents a significant cross-section of the public

that is interested in, concerned with, and informed about the cultural resources of Louisiana. We have an interest in and a responsibility toward developing appropriate policy and programs for cultural resource management. We are further concerned in seeing that such policies are adequately and effectively administered.

As members of the LAS (and as taxpayers) it is appropriate to raise a number of key questions at this time. What kind of program do we want for Louisiana? What are its goals? Who has the responsibility for the program? How much will it cost? How will it be funded? What mechanisms are there for quality control? What will we achieve in 5 years? 10 years? How many sites should be acquired for public ownership? What kind of data will be permanently archived in our museums? Can we expect major contributions to our knowledge of processes, past environments, etc.?

The LAS is in a unique position to play a major role in formulating culture resource management policy and programs and thus make a lasting contribution to Louisiana Archaeology. We can achieve this in a number of ways, but the key is through the concept of the citizen - archaeologist. By participating as members of the LAS, we express an interest in prehistory and history. We are active through our individual interests in archaeology and through meetings and activities at the local chapter and state society level. The citizen-archaeologist draws on his expert knowledge of the history and prehistory of the area and translates it into questions and terms that assist the decision makers. He transmits his ideas to the decision maker, either directly or through the LAS. He is a volunteer monitor who can define problems, report site destruction, comment on the quality of archaeological work and generally insist on a good program and good work. The citizen-archaeologist is an active participant in those matters pertaining to cultural resources.

The LAS provides the framework for a meaningful exchange of information and ideas. It also provides a vehicle for directing the ideas of the membership to those elected and appointed decision makers who have the official responsibility for cultural resource management. As President of the LAS, I am working with the Executive Committee in developing a policy statement on cultural resources management. This statement will be made public and will be submitted to officials of appropriate state and federal agencies. Hopefully, it will have some influence. I am also attempting to meet with appropriate officials to the greatest extent possible to discuss these matters. Your input in this process is needed. I urge you to transmit your ideas either through members of the Executive Committee or directly to me. I am convinced that the LAS can be an important force in developing a truly meaningful cultural resources program in our state.

A CRISIS INDEED

by

Jon L. Gibson

Member, Louisiana Archaeological Survey and Antiquities Commission

I have only just returned from a meeting of the Louisiana Archaeological Survey and Antiquities Commission. Rumors of potentially bad news have been

reaching my ears for some time, but now the rumors have become more, they have become advance warning of a possibly disastrous setback for archaeology in Louisiana. Under governmental reorganization, the Antiquities Commission appears heading for a strictly advisory role in new government and the State Archaeologist and Survey will be stripped and absorbed by the State Parks Commission. The former State Office of Cultural and Historical Preservation may take on new authority but will almost certainly continue to be understaffed and quite pressed to perform its own vital functions, much less than on new ones.

Many have worked long and hard to see a State-supported archaeology program. Bill Haag, the prime mover, invested much time and energy and deserves many commendations. Almost every practicing archaeologist in Louisiana had input into its formation. Now it is just about gone without ever really getting out of its infancy.

To lay blame on its demise is inappropriate. The fault is everyone's with a vested interest in Louisiana archaeology. Admittedly some were closer to the problem and therefore more cognizant of the inevitable, but simple awareness has not and will not get us out of the quandry. It may in fact be too late, but let's try anyway. I would encourage each and everyone of you to write to your senator and congressman; write to Rep. Harmon Drew (1005 Elm St.; Minden, LA 71055) and Sen. James Brown (P.O. Box 737; Ferriday, LA 71334), our friends in the House and Senate; write to Ms. Sandra Thompson (Atchafalaya Basin Div.; P.O. Box 44361; Baton Rouge), the new secretary of the Division. Tell them you are concerned about the fate of the Commission and of the Office of State Archaeologist. Tell them these must be included on new government in something other than an advisory role. Write before March 1. Political sensitivity is the only thing that will save Louisiana Archaeology.

LOUISIANA ARCHAEOLOGICAL SOCIETY
THIRD ANNUAL MEETING JANUARY 15 & 16, 1977

Hosted by
DELTA CHAPTER - L.A.S.
And
THE DEPARTMENT OF ANTHROPOLOGY, U.N.O.

The People Responsible.

Meeting Coordinator:	Joseph O. Manuel, Jr.
Program Committee:	E. Dan Shipman, Jon Gibson, Sherwood Gagliano, Richard Shenkel, J. Charles Collins and Joseph O. Manuel, Jr.
Publicity:	Brian Duhe
Hospitality:	June Shaikewitz
Registration:	Norma Bissel
Displays:	Melvin Glory, Forrest Travirca, Explorer Post 332
Audio Visual:	Isabelle Olson
Coffee Break:	Betty Pendley

A Word From the Meeting Coordinator, Joseph O. Manuel, Jr.

One hundred and seventy-eight amateur and professional archaeologists turned out for the third annual meeting of the Louisiana Archaeological Society in Metairie.

Judging from the numerous compliments received by members of the host chapter, the meeting rated top scores in every category. The day and a half meeting featured twenty-one speakers; Woody Gagliano, Clarence Webb, James Bruseth, Eric Lacefield, Frank Servello, Charles Bollich, Joe Frank, Dan Shipman, Joe Manuel, Jon Gibson, William Haag, Stu Neitzel, Forrest Travirca, Marco Giardino, Brian Duhe, James Fogleman, Robert Neuman, Lynne Staub, Tommy Ryan, and Dottie Gibbens.

Rick Shenkel moderated Saturday's symposium on the Louisiana Coastal Plains and Clarence Webb chaired Sunday's activities.

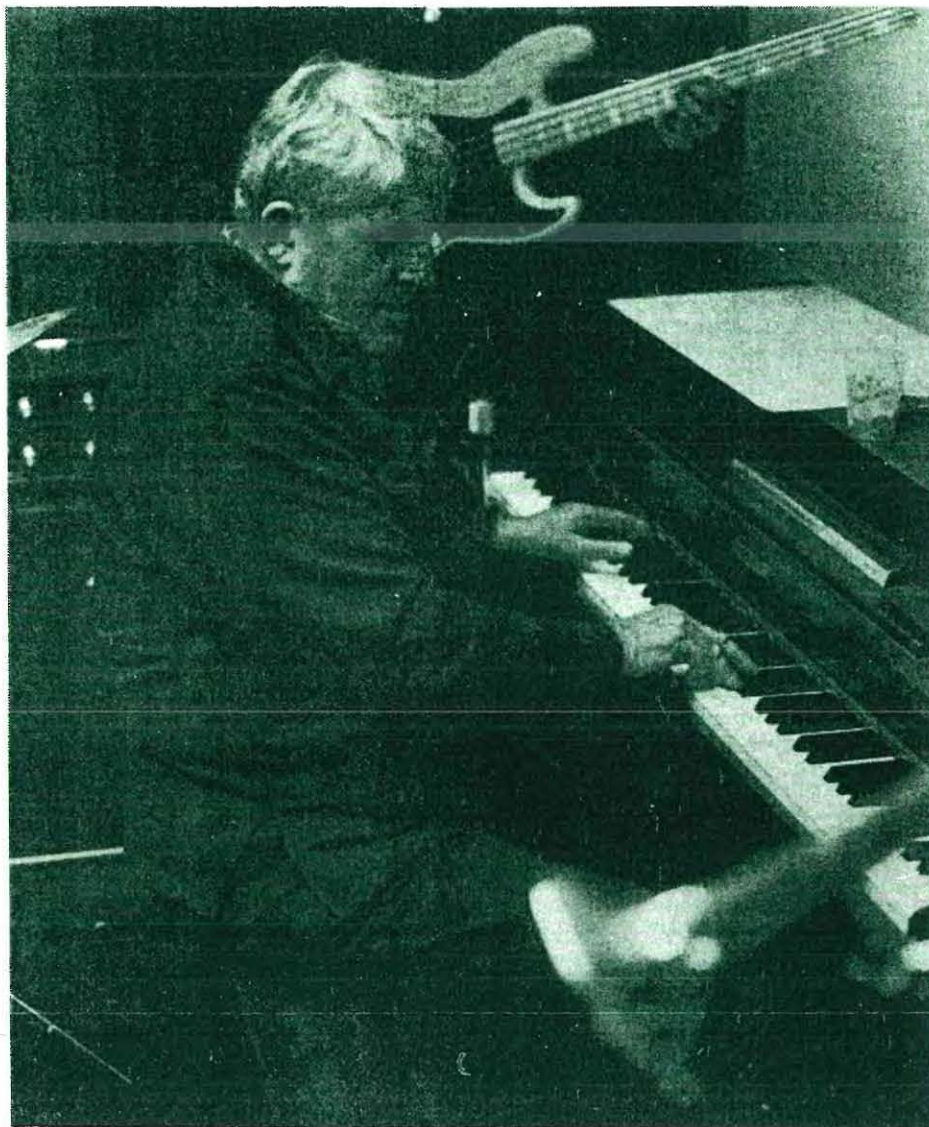
Jon Gibson had the honor of presenting to Clarence Webb the first James Alfred Ford award for outstanding contributions to archaeology in Louisiana. As Dr. Webb moved forward to receive the award the audience rose, applauding in a unanimous display of affection for a man loved by those who know him and respected by those who know of him.

Exhibits had been arranged by Melvin Glory, Forrest Travirca, Explorer Post 332 and Brian Duhe. Of especial interest were exhibits of quantities of bone artifacts and processual bone materials, presumably of Tchefuncte and Poverty Point periods, from the Bayou Jasmine site.

At 6 p.m. on Saturday members of Delta Chapter opened the doors to a New Orleans style hospitality room. One of the city's finest jazz ensembles, from the New Orleans Center for Creative Arts, entertained during the evening. A Dixieland jam session evolved with the one and only Stu Neitzel at the piano. Bourbon Street never had it so good.

After a series of papers Sunday morning the business meeting was called to order. The meeting, presided over by President Woody Gagliano, will be reported on in this letter by Tommy Ryan.

I would like to add a word of thanks from the members of the Delta Chapter to all of you who attended the meeting--thanks for the memories.



The Program.

SATURDAY, JANUARY 15

Registration, displays, refreshments

Call to order, welcome: Co-Hosts, Dan Shipman and Richard Shenkel.

5-minute chapter reports

SYMPOSIUM: LOUISIANA COASTAL PLAIN Shenkel, Moderator

Sherwood Gagliano: Pleistocene to Poverty Point; Geomorphic History

Clarence Webb: Poverty Point Manifestations on the Gulf Coast

James Bruseth: The Puzzle of Poverty Point in the Pontchartrain Basin

Eric Lacefield: Burials on Bayou Malotte

Frank Servello: Middens and Mounds in the Atchafalaya Basin (1974-5)

Kathleen Byrd: The Brackish Water Clam (Rangia cuneata): A Prehistoric
"Staff of Life" or a Minor Food Resource
(Introduction of state officers and committee persons)
Charles Bollich: Archaeology of Sabine Lake
Joe Frank: Little Pecan Island
DeMarcay, Shipman, Manuel: A Preliminary Report on Fleming-Berthoud
Jon Gibson: Settlement Analysis of the Mermentau Basin in South-Central La.
Clarence Webb: Discussion and Critique, Coastal Plain Symposium

William Haag: Update on Poverty Point at Epps
Robert S. Neitzel: Update on Fatherland Site
Jon Gibson: Presentation of the James A. Ford Award

SUNDAY, JANUARY 16

Call to order, Brian Duhe; Chairman, Clarence H. Webb
MOVIE: Preserving the Past for the Future; courtesy of the Arkansas Program
in Public Archaeology, 8 a.m.
Marco Giardino: Osteological Report on the Population of the Mt. Nebo
(16MA18) Site, Madison Parish, La.
Brian Duhe: Preliminary Evidence of an Extensive Seasonal Fishing Activity
at Bayou Jasmine
James Fogleman: Archaeology in the Elementary School
Robert Neuman: Complicated Stamped Pottery in Louisiana; its Spatial
Distribution and Chronology
Lynne A. Staub and J. Stephen Perry: Preliminary Investigation of a Riverboat
at Shaw, La. (16C051)
Tommy Ryan: Archaeology and the Environmental Review Process
Dottie Gibbens: Problems of Inadequate Work

Business Meeting: call to order by Joseph Manuel
(Presided over by President Sherwood Gagliano)
Close of Third Annual Meeting

Highlights of Program, LAS Annual Meeting, as noted by Editorial Staff.
(Speakers will please pardon errors occasioned by old ears, microphone
squeaks, tired seats, coffee breaks, nature walks and illegible notes).

The coastal plain symposium was initiated by Gagliano's concise geological-archaeological background summary from Pleistocene times through the prehistoric eras, showing the relationship between river, lake, terrace and upland systems and man's habitation. He especially emphasized the formation of the Pontchartrain Basin by faulting and the impoundment by sand beaches and the natural levees of the easternmost Mississippi River delta system between 4000 and 2000 years ago, the shift westward to the Teche delta and the return to the St. Bernard system during this time, and the successive deltas during the past 2000 years. These geomorphic changes correlate with and help to explain the presence of extinct animals and early man on old land masses like Avery Island, the Natchez loess, and near Baton Rouge; the finding of late Paleo-Indian fluted and lanceolate points on terraces north and west of the delta;

the association of middle and Late Archaic habitation with the north and east higher lands near Lake Pontchartrain and of Poverty Point and Tchefuncte cultures with the Mississippi natural levees and beaches south of the lake and westward in the Lafayette area; and the association of later cultures with the Atchafalaya Basin and the relict or active streams and bays of the entire deltaic land mass.

Bruseth and Webb raised the question of conflict in dating of Poverty Point sites around Lake Pontchartrain, specifically Linsley, Bayou Jasmine, Garcia and Claiborne. Bruseth pointed out the evidence of change in salinity about 2000 B.C. as responsible for the shift from oysters in Archaic sites to *Rangia* predominance in Poverty Point sites, also the dates between 1800 and 1700 B.C. for Poverty Point at Linsley and Teoc Creek in the Yazoo Basin. The single date of 1240 B.C. at Cedarland was questioned by both, with agreement that 2000 B.C. is a more likely time for this site; simultaneous occupation of Cedarland and Claiborne for hundreds of years is deemed unlikely. Webb reported good evidences of Poverty Point occupation along the coast between Claiborne and Florida, especially at Applestreet and Point aux Chenes, possibly at Greenwood Island, all near Pascagoula; steatite sherds are missing and fiber-tempered pottery is rare; sandy paste pottery prevails and podal supports, mammiform and wedge, are numerous; projectile point types are predominantly Pontchartrain, with Gary, Ellis and Kent; trade is shown by yellow chert from the Mississippi hills, orthoquartzite from Alabama and opalized shell, all traits found at Claiborne. Contacts between Claiborne and Choctaw-hatchee Bay in Florida, especially the presence at the latter of novaculite, quartz, Jaketown perforators and cores, and 2-hole gorgets, and the presence at Claiborne of Florida Archaic points and materials, also Elliott's Point-like clay balls in the early levels.

Byrd questioned the efficacy of *Rangia* clams as a major food source, citing the near adequacy of protein but the low caloric value of clams (2/3 protein content of venison but only 1/3 to 1/4 the caloric value of animal meats), and equating caloric equivalence of one adult deer (100 pounds) to 40,000 clams. In discussion it was pointed out that this equates a 1-pound meal of venison with 800 clams and it was suggested that these figures should be carefully checked; it was generally agreed that in most circumstances vegetal foods, including high caloric nuts, constituted the major dietary intake.

Lacefield's report concerned burials on Bayou Malotte, St. Bernard Parish, apparently associated with a shell-earth midden containing bones of alligator and deer, *Rangia* shells, and pottery of the Bayou Cutler period. Male and female interments, extended and bundle, were found. The DeMarcey-Shipman-Manuel report of the Fleming-Berthoud site in the Baritaria Basin chiefly concerned the analysis of more than 5700 sherds, found with bone tools at this mound site. Preliminary analyses indicate pottery of the Coles Creek, Plaquemine, cult material and shell tempered wares; new varieties of L'Eau Noir and Evansville punctated types have been separated.

Bollich, Servello, and Gibson discussed surveys or sites on the western edge or west of the deltaic mass. The ceramics around Sabine Lake are predominantly sandy, Bollich states, including Tchefuncte, Goose Creek,

Conway and San Jacinto series, often resembling sandy Baytown or Thom's Creek (South Carolina) ceramics; most of it is plain or with linear incising. Frank states that Little Pecan Island also has sandy paste pottery with Coles Creek decoration; Caddoan trade sherds have been found. The survey of Atchafalaya Basin during 1974-5 enabled Servello to distinguish a variety of settlement patterns, including small and large shell middens, earth middens, mixed middens, with small and large single and multiple mounds of earth or shell. The earliest occupations seem to have been Troyville-Coles Creek single or multiple occupation seasonal sites, followed by larger year round sites of Coles Creek or Plaquemine peoples, then a late reversal to seasonal occupations during later Plaquemine times. Gibson states that settlements along the Mermentau and Nezpique rivers had been related to stream bank positions and vegetation; above Lake Arthur settlements related to dry hardwood, cutbank location and often near the inflow of tributaries, whereas south of the lake the settlements were often in marsh, with none of the above special associations. The situation, he felt, was consistent with the Attakapas ethnographic record.

Haag stated that the past season's work at Poverty Point site showed the platform or terrace of Mound A (the tail of the bird effigy) to extend downward more than 10 feet below the present talus, a total height of 20 feet, with typical mixed loading of artificial construction. He reiterated the belief that large post molds inside the innermost ridge of the west sector were related to astronomical observations and outlined projected studies to demonstrate the astronomical orientation. Neitzel described studies and excavation techniques at the Fatherland site at Natchez.

SUNDAY JANUARY 16 PROGRAM

After presentation of the Arkansas film "Preserving the Past for the Future", Giardino reported on bone pathology found in the Mt. Nebo population, including a stone projectile point imbedded in a tibia and with some evidence of healing. Duhe's description of surface finds at the Bayou Jasmine site included hundreds of bone tools from collections by Glory, Guillie, Gehegan, Allen and himself, presumably of Tchefuncte and Poverty Point cultural provenience. Stone artifacts were minimal but included projectile points of Pontchartrain, Gary, Ellis, Kent and possibly Delhi; a few Jaketown perforators but no cores; bifaces and side scrapers; sandstone saws and abraders, hammerstones, pumice, grooved plummets and small grooved weights, a quartz crystal and one stone bead. Poverty Point clay balls include types biconical plain, extruded and grooved; cylindrical plain, with lateral grooves and end extrusions; spheroidal, cross-grooved, melon-shaped, melon with end grooves, amorphous, biscuit-shaped and biscuit-shaped, grooved. Pottery sherds covered almost the full range of Tchefuncte types, rare fiber tempered, and moderate amounts of Marksville and Coles Creek types, indicating repeated occupations of a multi-component site. There were one stone pipe and fragments of tubular clay pipes. Ornaments were few but included bone pendants; bone, shell and one stone bead, and the quartz crystal. Human and dog burials and human coprolites have been found. Based on the paucity of ornaments and exotic materials, the relatively small numbers of stone projectile points and plummets, the abundance of fish and

other aquatic remains (alligator, turtle, gar, etc.), the presence of nuts, and the preponderance of tools presumably related to fishing (fish hooks, harpoons, bone points, fish gorges, bone objects interpreted as harpoon finger rests and float valve plugs, plaited cordage and a carved wood spool), Duhe concludes that Jasmine was a summer and fall seasonal camp, repeatedly used, rather than a year-round settlement.

Fogleman discussed elementary school archaeology at the Stelly site, attesting to the feasibility of using and training students. This is a multiple mound site near Le Beau which shows occupation in the Marksville, Coles Creek and Plaquemine periods, but with baked clay balls, plummetts and projectile points of Evans, Gary and Pontchartrain types indicating a Poverty Point occupation.

Neuman documented the widespread distribution of complicated stamped pottery in the Louisiana Coastal Plain, north to Avoyelles Parish. Most of these sherds have been found in Coles Creek context and have not predated Marksville. More than 80 complicated stamped sherds have seemed to include Weeden Island, Swift Creek, Woodstock and Etowah types, with 9 unaligned.

The preliminary investigation of a buried river boat, reported by Staub and Perry, indicates that it was a flat-bottomed barge used to transport cattle and farm products. Further excavation and declaration of the wreck as a State Landmark are hoped for.

The final two papers, by Ryan and Gibbens, concerned archaeology and the environmental review process. The speakers pointed out the increasing volume of such work, with approximately 150 projects during 1975, the necessity of being acquainted with the essentials of federal compliance, the desirability of consultation with the National Register and the National Advisory Council on Procedure, and the desirability of becoming involved in the review process. Inadequate reports and infrequent publications were deplored.

During the meeting the results of the recent society and chapter representatives elections were announced. Officers for 1977 are:

President: Sherwood H. Gagliano

President-elect: E. Dan Shipman

Recording Secretary: Tommy Ryan

Corresponding Secretary: Brian J. Duhe

Treasurer: William S. Baker, Jr.

Chapter Representatives on Executive Committee:

Delta Chapter: Joseph O. Manuel, Jr.

East Central Chapter: Delson Chevalier

Northeast Chapter: Les Davis

Imperial Calcasieu Chapter: Joe Frank

Annual Business Meeting, reported by Tommy Ryan.

The meeting was called to order by the President, Sherwood Gagliano, who expressed his appreciation for the opportunity of serving in this capacity.

The minutes of the 1976 Annual Meeting, as submitted by the Recording Secretary, were approved by voice vote.

The Treasurer's report, attached hereto, was approved. This shows a membership at the end of 1976 of 249, with a bank balance of \$4,966.60 and with expenditures during the year well within the annual income.

The Editor, Jon Gibson, reported that four newsletters had been issued during the year and that the 1975 Bulletin, Louisiana Archaeology, was being distributed during and after this meeting. It is planned to issue two Bulletins during 1977, in order to become current with publications. Clarence Webb has been assistant Editor since June, 1976.

A discussion of activities ensued. A Field School is planned for the summer of 1977 and possibilities of time and place were discussed. A committee was authorized, with Tommy Ryan and Jon Gibson (co-chairmen). The need to enlarge the membership and to increase public information was presented and a committee was proposed to develop an action-oriented plan for these purposes. The President appointed Mrs. Dale Brown and Joe Frank as co-chairpersons for this committee.

The society's role in cultural resource management was discussed at some length. It was agreed that the Executive Committee would prepare a statement on this topic for submission to the State Archaeologist. On motion, duly seconded and unanimously passed, the President and Executive Committee were authorized to pursue this activity further, including the appointment of a committee if deemed desirable.

A motion was invited by the President, duly made, seconded and passed unanimously, thanking the host, Delta Chapter, all committee chairmen and members, Dr. J. Richard Shenkel and the University of New Orleans, the Howard Johnson Motel, the New Orleans Center of Creative Arts for the Jazz Ensemble, and the sponsors, all of whom contributed to the pleasure and success of the meeting.

An invitation extended by Robert W. Neuman to hold the next Annual Meeting in Baton Rouge was accepted with thanks.

The President announced the following archaeological meetings to be held in the state during the current year: Caddo Conference, Natchitoches, March; Society for American Archaeology, New Orleans, in May; and Southeastern Archaeological Conference, Lafayette, October.

The meeting, on voice vote, was adjourned.

Louisiana Archaeological Society, Treasurer's Report, Year of 1976, by
W.S. Baker, Jr.

Balance in bank 12-31-75 \$3,607.93

Receipts:

Memberships	\$2,236.00	
Publications	321.40	
Donations		
Publication Fund	250.00	<u>2,807.40</u>
		Total Receipts
		6,415.33

Expenditures:

Printing Cost	\$1,147.01	
Annual meet exp.;		
Northeast Chapter (1976)	25.00	
Delta Chapter (1977)	100.00	
Postage	105.44	
Award Plaque	34.28	
Office Supplies	27.00	
Refund of dues	10.00	
		Total Expenditures
		<u>1,448.73</u>
		Bank Balance 12-31-76
		\$4,966.60

1976 Membership.

Regular	186
Associate	41
Institutional	18
Life	3
Sustaining	<u>1</u>
	249

NOTICE, EXECUTIVE COMMITTEE MEETING

An Executive Meeting has been called by Woody Gagliano, Pres. L.A.S. in conjunction with the Caddoan Conference in Natchitoches, La. on March 25, 26 & 27, 1977. The meeting will be held in the Museum Annex on the campus of Northwestern Louisiana State University at 7:30 P.M., Saturday, March 26, 1977. (Meeting Room will be announced upon arrival).

You are urged to make every effort to attend this very important Executive Meeting.

AGENDA:

1. Public relations program.
2. Membership drive and new chapters.
3. Summer field workshop.
4. Rotating speaker program for chapters.
5. Bumper stickers, belt buckles, etc.
6. Cultural resources management policy statement.
7. Other business.

Brian J. Duhe
Recording Secretary, LAS

LAS MEMBERSHIP

NAME	1975	1976	1977	1975 BULLETIN	
				PICKED UP	MAILED
<u>REGULAR</u>					
Able, Paul	x	x		x	
Abney, Lincoln	x				x
Adams, James		x			
Alexander, Carl	x	x			x
Allain, Van	x				x
Albritton, Myron	x	x	x	x	
Allen, Glenn			x		
Ashurst, Mrs. Melissa	x	x			x
Atkins, William	x	x		x	
Aucoin, Barbara	x	x	x	x	
Baker, James	x	x	x		x
Baker, W.S.	x	x	x	x	
Barilleau, Loella		x			
Beckman, Michael	x	x		x	
Bell, Robert		x			
Bennet, Edith	x				x
Bernard, Lowell	x				x
Bissel, Joseph	x	x	x	x	
Bodin, Roland	x	x		x	
Boersma, Mrs. Nell	x	x			x
Boese, Mrs. H. Lamar	x	x			x
Bollich, Dr. Charles	x	x		x	
Bonnin, Jack	x	x	x		x

NAME	1975	1976	1977	1975 BULLETIN	
				PICKED UP	MAILED
<u>REGULAR</u> (continued)					
Bourn, Bill	x	x			x
Braselman, Lin		x			
Braud, Rev. Dominic	x	x	x	x	
Brazda, Steven		x			
Brewerton, M.T.	x	x	x		x
Bride, Gloria			x		
Broussard, Francia	x	x		x	
Brown, Ian		x			
Brown, Sen. James H.	x	x			x
Brown, Kenneth	x	x			x
Brown, Thomas	x	x	x	x	
Bruce, Dr. J.B.	x	x	x	x	
Bruder, Joan	x	x		x	
Bruseth, James	x	x		x	
Burden, Eileen	x	x		x	
Butcher, Mrs. William	x	x			x
Byrd, Kathleen			x		
Capers, William			x		
Carrigee, Janet		x	x		
Casey, Jean			x		
Cassy, Max	x				x
Castille, George	x		x	x	
Chevalier, Delson	x	x			x
Chiasson, Kathy		x			x
Christian, James	x				x
Clark, Dr. Charles	x	x			x
Cobb, Herschel	x	x			x
Collins, J. Charles	x	x		x	
Comardelle, Michael			x		
Connaway, John	x	x			x
Cooper, Bob	x	x			x
Cosgrove, Alvin	x	x	x	x	
Coustance, George	x				x
Crawford, S. Cooke	x	x		x	
Cross, Mrs. Charles	x				x
Crowe, C. Murry		x			
Cuccia, Dominick		x	x		
Darnell, Ralph			x		
Davis, Hester	x	x			x
Davis, Lester	x	x		x	
DeMarcay, Gary	x	x		x	
Deville, Nancy		x			
Dodd, Monroe		x			
Drew, Margaret	x	x		x	
Ducote, Greg	x	x		x	

NAME	1975	1976	1977	1975 BULLETIN	
				PICKED UP	MAILED
<u>REGULAR</u> (continued)					
Dugas, Tim	x	x		x	
Duhe, Brian	x	x	x	x	
Dupont, Larry	x				x
Dupuy, Marc	x	x		x	
Du Ra Pav, Norman	x				x
Durham, F. Manning	x	x		x	
Durio, Charles	x	x			x
Dye, David	x	x			x
Evans, Mrs. V.B.	x				x
Exnicios, Joan			x		
Farris, John	x				x
Fayard, Marguerite	x				x
Fleming, Charles	x	x		x	
Fogleman, James	x	x	x	x	
Foster, Weldon	x	x		x	
Fox, Gary		x			
Frank, Joe	x	x	x	x	
Franz, Richard	x	x			x
Fredlund, Glen	x	x		x	
French, Ronald	x				x
Friedburg, Linda	x	x		x	
Friedman, Ben	x	x	x	x	
Fulgham, Susan		x	x		
Fullen, William			x		
Futch, Robin		x			
Gagliano, Dr. Sherwood	x	x	x	x	
Garcia, Dr. Angel	x	x			x
Gertjejansen, Doyle		x			
Gibbens, Dottie	x	x		x	
Gibson, Dr. Jon	x	x		x	
Glory, Melvin	x	x	x	x	
Greene, Dr. Glen	x	x			x
Gregory, Dr. Hiram	x	x			x
Groene, Dr. Bertram	x	x			x
Guichard, Jacqueline		x			
Guy, John Jr.			x		
Guy, John Sr.		x			
Haag, Dr. William	x	x	x	x	
Haigh, Norman	x	x		x	
Hale, Judson	x	x			x
Hanson, Jo Ann	x	x		x	
Hardy, Nelson	x	x		x	
Harper, Luther			x		
Harris, Lou	x	x		x	
Hattenbach, Mrs. A.B.	x	x		x	

NAME	1975	1976	1977	1975 BULLETIN	
				PICKED UP	MAILED
<u>REGULAR</u> (continued)					
Head, Lawrence	x	x	x		x
Hillman, Mitchell	x	x		x	
Hodges, Paul	x	x		x	
Hoff, Cheri	x				x
Holland, Mary	x				x
Holley, George	x				x
Hollier, Mona	x				x
Hudson, Jack	x				x
Hudson, Kay	x				x
Hufnagel, Brenda	x			x	
Hunter, Donald	x	x		x	
Jeane, David	x	x			x
Johnson, Paula	x		x	x	
Johnson, Tommy			x	x	
Jones, Recca	x	x		x	
Kahoe, Michael		x			
Kibbe, Edward	x	x		x	
Kopera, Anthony P.	x				x
Kuttruff, Louis	x	x	x		x
Laborde, Alden		x			
Lacayo, Joseph		x			
Lacefield, Eric			x		
Leblanc, John	x				x
Leggett, Leo	x				x
Leutze, Willard	x	x	x		x
Lintoff, William	x				x
Litteral, Caroline			x		
Lochlaum, Chris			x		
Long, James	x	x			x
Loumiet, Betty	x	x	x	x	
Lozano, Robert	x	x		x	
Machen, R.O.	x				x
Mamalakis, Vance	x	x			x
Manry, John	x	x			x
Manuel, Joseph	x	x		x	
Mapp, Marcus	x	x	x	x	
Mathews, Billie	x				x
Mathews, Harry	x	x		x	
Mathews, Michelle	x	x			x
McKenzie, Charles	x			x	
McKenzie, Mrs. Charles	x			x	
McKinney, Ralph	x	x			x
McMullan, Dennis	x				x
Miller, Layton	x	x		x	

NAME	1975	1976	1977	1975 BULLETIN	
				PICKED UP	MAILED
<u>REGULAR</u> (continued)					
Mitchell, C.H.	x				x
Moore, Major Edwin	x	x			x
Morehead, James			x		
Morgan, James	x	x		x	
Morse, Dr. Dan	x	x			x
Morse, Mrs. Phillis	x				x
Mosher, Elizabeth	x	x			x
Mundie, James			x		
Murry, Robert	x	x	x	x	
Neitzel, Robert	x	x		x	
Neuman, Robert	x		x	x	
Oliver, Dr. James	x	x		x	
Olson, Isabelle		x	x		
Owens, Jack	x	x	x	x	
Palermo, Jacqueline		x			
Parker, Dr. Edwin	x				x
Parker, Fred		x			
Parker, Thomas	x				x
Passmore, Ted		x			
Patterson, Leland	x	x			x
Peck, Donald		x			
Percy, George	x				x
Perry, Stephen			x		
Phillips, Gary			x		
Phillips, Philip	x	x	x		x
Pine, Walter		x			
Plauche, Vance	x			x	
Poland, Billie	x	x			x
Polk, John	x	x		x	
Poole, Russell	x	x			x
Price, G.R. Dennis	x	x	x		x
Rabensteiner, G.A.	x				x
Raby, Mrs. Mona	x	x		x	
Reis, Frank	x	x		x	
Rice, Mary Ellen	x	x			x
Richardson, Dr. Miles	x	x			x
Rivet, Philip	x	x		x	
Robinson, Dewey	x	x		x	
Rolingson, Martha	x	x			x
Rose, Dorothy			x		
Rucker, Marc	x	x			x
Ryan, Thomas	x	x	x	x	
Saucier, Roger		x			
Savoie, Clarence	x	x	x	x	
Schofield, John	x				x

NAME	1975	1976	1977	1975 BULLETIN	
				PICKED UP	MAILED
<u>REGULAR</u> (continued)					
Scott, Everett	x	x		x	
Servello, Frank		x			
Sewell, J. Logan	x	x	x	x	
Shaikewitz, Mrs. T.B.		x			
Shenkel, Dr. J. Richard	x	x		x	
Shiner, Dr. Joel	x	x			x
Shipman, E. Dan	x	x	x	x	
Sibley, J. Ashley	x	x			x
Sibley, Mrs. J. Ashley	x				x
Sibley, Lynn	x			x	
Simmons, Edward	x	x		x	
Simmons, Lanier	x	x		x	
Sims, Gerald			x		
Sisemore, H.B.	x	x			x
Sloane, Bryan	x	x		x	
Smith, Albert	x				x
Smith, Brent	x	x			x
Smith, Gerald	x	x	x		x
Smith, Jewel	x				x
Smith, Ronda		x			
Springer, Dr. James	x	x			x
Stafford, Mary		x	x		
Starbird, Leonard	x	x	x	x	
Staub, Lynne			x		
Steponaitis, Vincas		x			
Story, Dr. Dee Ann	x	x			x
Strother, Barbara	x				x
Stroud, W.J.	x	x		x	
Struben, W.C.	x	x		x	
Stutson, William	x	x			x
Talley, Jeanette	x				x
Tarver, John	x				x
Taylor, Marilyn	x	x		x	
Thibodeaux, Harry	x	x		x	
Thompson, Lynn	x				x
Toca, Glenn	x				x
Toth, E. Alan	x	x			x
Townsend, Margie	x				x
Trapolin, Jeanne		x			
Travirca, Forrest		x			
Treadaway, Ben	x	x	x	x	
Tuten, Frank	x	x		x	
Varnado, Dana	x			x	
Vautrot, Lloyd			x		

NAME	1975	1976	1977	1975 BULLETIN	
				PICKED UP	MAILED
<u>REGULAR (continued)</u>					
Verzwyvelt, Bill			X		
Waguespack, Leslie		X			
Walden, W.M.	X				X
Walker, Richard	X	X	X	X	
Webb, Dr. Clarence	X	X	X	X	
Weber, Dr. J. Cynthia	X	X			X
Webster, William	X				X
Weinstein, Richard	X	X		X	
White, Lola	X	X		X	
Whitley, B.J.	X	X			X
Winters, Mrs. Joe	X	X			X
Womack, Alma		X			
Woodiel, Deborah	X	X	X	X	
Wooster, Gordon		X			
Yancey, Clarence	X	X			X
Zirkle, Robert	X	X		X	
 <u>Institutional</u>					
Bossier Parish Library	X	X			X
Caldwell Parish Library	X				X
Dupre Library, USL	X	X		X	
Iberville Parish Library		X			
Jefferson Davis Parish Lib.		X			
Junior Arch. Society		X			
Lafayette Public Library	X				X
Lafourche Parish Library	X	X			X
Lake Charles Public Lib.	X			X	
LSU in Shreveport (Lib.)		X			
La. Arch. Survey & Antiquities Comm.			X		
La. State Library	X	X			X
LSU in Baton Rouge (Lib.)	X	X			X
McNeese State University	X			X	
Memphis State University	X	X			X
Museum of the American Indian Library	X	X	X		X
Natchitoches Parish Lib.		X			
New Orleans Public Lib.		X	X		
St. John the Baptist Par.	X	X			X
Tensas Parish Library	X				X
Texas A & M Univ. Lib.	X	X	X		X
Tozzar Library	X	X			X
Tulane Univ. Library	X	X			X
Univ. of South Florida Lib.		X	X		

NAME	1975	1976	1977	1975 BULLETIN	
				PICKED UP	MAILED
<u>Associates</u>					
Allain, Judith	x				
Allbritton, Mrs. Vonnie	x	x	x		
Allen, Glenn			x		
Baker, Patsy	x	x	x		
Baumgardner, Mrs. J.H.	x				
Bissel, Norma	x				
Bodin, Barbara	x				
Brown, Gloria	x	x	x		
Bruder, Alfred	x				
Carrigee, Henry		x			
Chevalier, Mrs. Billie	x				
Cosgrove, Cindy	x	x			
Cosgrove, Jewell	x	x	x		
Cosgrove, Patricia	x	x			
Cuccia, Mercedes		x	x		
Davis, Claire		x			
Duhe, Charlene	x	x	x		
Fleming, Myrna	x	x			
Foster, Jane	x	x			
Frank, Carol	x	x	x		
Friedman, Majorie		x	x		
Gervase, Edward (Lt. Col.)		x			
Gervase, Mrs. E.		x			
Gibson, Mary Beth	x	x			
Glory, Phyllis		x	x		
Greene, Lorraine	x	x			
Guy, Billie		x			
Guy, John Jr.		x			
Guy, Larry		x			
Guy, Leslie		x			
Guy, Robert		x			
Haigh, Marion	x	x			
Harris, D.	x				
Hillman, Ann	x				
Holland, Fred	x				
Jeane, Anne	x	x			
Jeffries, Dennis	x				
Johnson, Tommy			x		
LeBlanc, Marion	x				
Loumiet, Ronald	x	x	x		
Lozano, Nina	x				
Manuel, Benjamin	x	x			
Manuel, Joseph	x	x			
Manuel, Thomas	x	x			

NAME	1975	1976	1977	1975 BULLETIN	
				PICKED UP	MAILED
<u>Associates (continued)</u>					
Mapp, Elise		x	x		
Mathews, Kellie	x				
McKenzie, Bernard	x				
McKenzie, Sue	x				
McMullan, Denise	x				
McMullan, Dennis	x				
McMullan, Evelyn	x				
Murry, Ellen		x			
Parker, Ester	x				
Passmore, Josephine		x			
Phillips, Gary			x		
Polk, Lena	x				
Polk, Patricia	x				
Rose, Julian		x	x		
Sewell, Renzz	x		x		
Sibley, Mrs. Shery	x				
Sloane, Karen	x				
Smith, Betty	x				
Stroud, Martha	x				
Treadaway, Paul	x				
Verzwyvelt, Mary			x		
Walker, Rose		x	x		
Webb, Mrs. C.H.	x	x			
White, Marie Ann	x	x			

