

# Louisiana Archaeological Society

NEWSLETTER OF THE LOUISIANA ARCHAEOLOGICAL SOCIETY

Vol. 4, No. 4



October, 1977

---

## IN THIS ISSUE:

From the Editor's Desk ... 1 ; Boatstones: Function and Manufacture ... 2 ; Executive Committee Meeting, Minutes ... 5 ; Treasurer's Report ... 7 ; Proposed By-law Changes ... 9 ; 1978 Annual Meeting ... 10; Bumper Sticker Slogan Contest ... 11; LAS Summer Workshop ... 11; Current Research ... 17; Chapter News ... 19.

---

\*\*\*\*

## FROM THE EDITOR'S DESK

The Bulletin Has Gone To Press! The third LAS bulletin, Louisiana Archaeology, has gone to the printer. After what has seemed like an interminable wait, we finally received an article which put us over our goal of about 150 printed pages, a total recommended by the executive committee at its spring meeting. This issue will contain articles by Duhe on Bayou Jasmine, by Frank on the Bel site, by Neuman on coastal investigative techniques, by Byrd on Rangia food potentiality, by Patterson on Catahoula point distribution, by Gibson on Lacadon arrowheads and Jaketown perforators, by Shiner on Nerevo Leon survey, by Webb and Baker on Catahoula Points, and by Springer on Seriation. If we encounter no printing difficulties we should have the bulletin by the time of the annual meeting in Baton Rouge.

Keep in mind this is the 1976 bulletin. We are still a year behind in spite of our advowed intentions to get caught up. This is due to two principal factors: a) our late start on bulletin 1 (the Society was not organized until mid-1974 and it was well into 1975 before we had enough

---

The newsletter of the Louisiana Archaeological Society is published quarterly from its editorial office at the University of Southwestern Louisiana, Department of Social Studies, Lafayette, LA 70504. Send articles, notes, and news to Dr. Jon L. Gibson, at the preceding address. Unless otherwise indicated, opinions stated herein are those of the editor or other individuals and do not necessarily reflect Society policy.

articles to publish for the 1974 bulletin) and b) people are simply not submitting papers. In my 3½ year tenure as LAS editor, only two papers submitted for publication have been returned to authors and one of those was only returned for revision. It seems that we will either have to be patient and wait until we have enough publishable material or we will have to start submitting more papers. I certainly would prefer the latter.

Remember that only those members who paid for 1976 will receive this bulletin. If you are a new member you must pay an additional \$10.00 for the bulletin.

Newsletter Difficulties. Summer is an exceptionally difficult time for newsletter publication. A number of unavoidable problems emerge in the summer; the result this time was an insufferably late July newsletter. Our print shop personnel take their vacations during this time, and fiscal year constraints generally crop up. These seasonal things coupled with some unusual coincidences produced our difficulties. Vacation schedules took Earl, who duplicates the newsletter, out for two weeks; Booney, who does the photography, was gone the next two weeks. After their return, the film used for photo reproduction failed to come in and had to be reordered after the 1977-78 fiscal year budget was approved. Thus, we experienced a delay of five weeks. The editors extend their apologies and will investigate ways of alleviating these summertime difficulties, which promise to be recurrent.

Behind the Newsletter Scene. I thought it might be informative to the members to describe the processes behind newsletter production. About a month to a month and a half before the projected mailing date, Webb writes letters and begins to assemble notes on current research, chapter news, and other items. He puts this information together in a coherent fashion and sends it to Gibson, who adds additional notes and news. Gibson gives the edited version to Ms. Paulette Landry, who types the final copy. It is carried to the print shop where it is duplicated. It is then returned to the editor's office where pages are collated, folded, and stapled. Mailing labels are typed and affixed to newsletters. Newsletters are then sorted by bulk mailing guidelines and sent to members. If everything goes without a hitch, the entire process takes between 4-6 weeks and, not counting contributors, involves the efforts of 7-10 people.

Call for Articles. Please send articles, reports, comments, and book reviews to Gibson for Bulletin 4. I would like to go to press by March 1, 1978 for the 1977 bulletin and then produce the 1978 bulletin for the 1979 annual meeting. Let's all work hard to get current with our annual bulletin.

\*\*\*\*

BOATSTONES: FUNCTION AND MANUFACTURE  
Paul L. Hodges  
Monroe, Louisiana

Many functional interpretations of the boatstone have been suggested in the past, but the true use remains an enigma today. The author has

explored various hypotheses concerning this development, mainly to see if they were well supported.

Some hypotheses relate that boatstones were used as religious symbols for individuals or groups on journeys or in war parties, traveling by boat (Dr. Hiram A. Gregory, personal communication). It has also been suggested that the boatstone might have been a shaman's stone used in magico-religious rituals as a possible expectorant vessel (H.F. Gregory, personal communication). Another hypothesis says that it was a graveside food container placed on a new gravesite (H.F. Gregory, personal communication). When the container was seen empty later it was assumed that the dead person's spirit had eaten the food. Another belief is that boatstones were used as atlatl weights in many culture areas. This is based on the fact that preserved atlatls have been found with boatstones attached.

Boatstones and abrasive stones in the author's private collection were examined and found to possess varying degrees of abrasiveness as do modern whetstones. To sharpen a knife quickly coarse sandstone is used primarily. Harder stone is used later to procure a finer edge. It was observed that abrasive stones became hollowed out as they were used. The more wear they had, the deeper the depression became. If the sharpening or shaping stroke was carried completely to the edge of the stone a complete surface groove was made. But, if the object being worked was lifted at the end of the stroke a hollow in the center of the stone resulted.

Stream-roll of a stone would tend to round it. Butt-fracturing on one side would leave a flat surface which could be used advantageously for sharpening or shaping stone, bone, wood, canes, antler tips or other material. The probable series of steps involved in producing a boatstone is given in Figs. 1-2.

In consideration of the shamanistic magico-religious use hypothesis, it must be recognized that in any native American group the shaman was an extraordinary figure. He usually possessed distinctive personal traits that set him apart from the others. In some groups this was native intelligence and a high social rank or possibly variations of these traits. Ethnographically described shaman medicine kits contained many unusual objects of stone, wood, metal, feathers and other fetish material. Boatstones may have been used as magico-religious paraphernalia.

There is little plausibility that it might have been a graveside food container, since natural relationship and common sense would dictate recognition that some sort of animal or bird would have eaten unburied food. Aboriginal burials with boatstones as burial furniture may have served some magico-religious purpose, however.

Most hypotheses concerning boatstone use have not been subjected to rigorous quantitative testing. It remains for some enterprising archaeologist to perform a wide-ranging analysis of both public and private collections where good control is in force.

It is felt by the author that a strong possibility exists for some sort of shamanistic use. A rigorous review of ethnological data might well bear this out. However, the primary mental template most likely would have been that of some sort of abrading uni-purpose or multi-purpose tool. Later refinement into a symmetrical ritualistic object might explain the end product found archaeologically.

In conclusion, it must be stressed that the archaeologist must appraise a wide range of explanations for tool use. The boatstone might well be one of those tools that fulfills functions in both material and non-material aspects of culture.

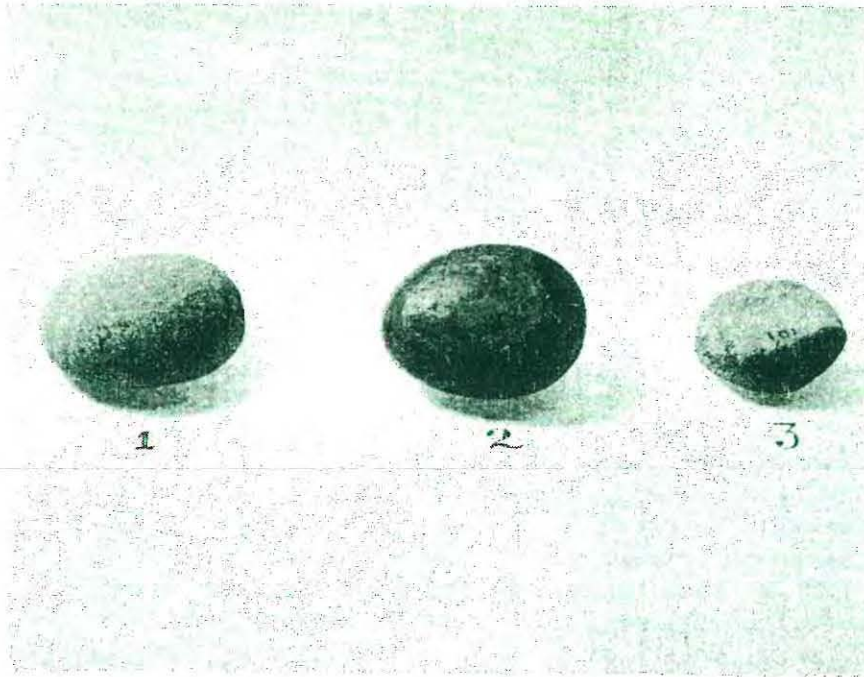


FIG. 1. INITIAL STAGES IN BOATSTONE MANUFACTURE. 1. Stone that was rounded in shape by natural causes; 2. Rounded stone that has been fractured on one side, leaving a flat surface; 3. Stone that was used as an abrasive with the sharpening stroke NOT being lifted up at either end, leaving a hollowed out groove for the full length of the stone.

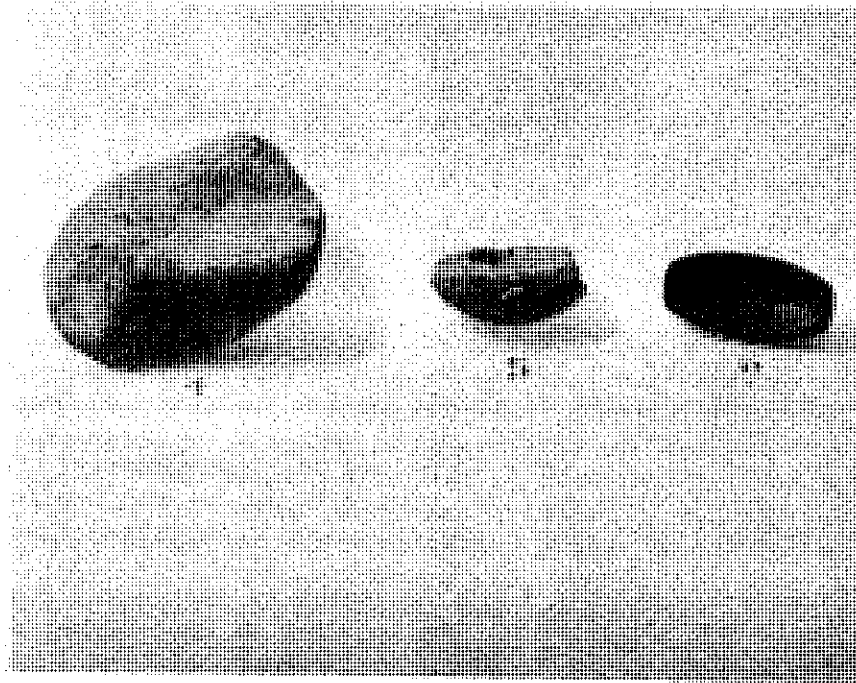


FIG. 2. FINAL STAGES OF MANUFACTURE. 4. Stone used as an abrasive with the stroke being lifted up at one end only, leaving a hollowed out central part of the stone except at the end where the stroke was NOT lifted; 5. Stone used as an abrasive with the stroke having been lifted at both ends of the stone, leaving a rough, unpolished canoe shaped stone. This stone has been broken at one end but not far enough back to break into the hollowed out portion; 6. Boatstone that has been shaped and polished, both inside and out, after having been hollowed out inside, thus producing the finished artifact.

Paul L. Hodges

\*\*\*\*

LAS EXECUTIVE COMMITTEE MEETING, MINUTES  
Brian Duhe  
Corresponding Secretary

President W. Gagliano called the meeting to order at 2:15 p.m., September 10, at the Sheraton Inn, Alexandria. Members present were President Woody Gagliano, Vice President Dan Shipman, Treasurer Bill Baker, Corresponding Secretary Brian Duhe, Assistant Editor Clarence Webb, Delta Chapter Representative

Joe Manuel Jr., Imperial Chapter Representative Joe Frank, Northeast Chapter Representative Les Davis, and East-Central Chapter Representative Logan Sewell. Absent were Tommy Ryan, Recording Secretary, and Jon L. Gibson, Editor.

LAS Bulletin - Jon L. Gibson was absent and Dr. C.H. Webb expressed concern about the Bulletin not being out yet. He stated that he thought that we would catch up and print two bulletins this year. Dr. Webb also stated that the material for the quarterly newsletter had been sent to Dr. J.L. Gibson and did not know why the newsletter had not been sent out yet. He said that we should not draw any conclusions without first hearing from the Editor, Dr. Gibson.

Fish Creek-Three Day LAS Workshop-Dr. Jon L. Gibson, T. Ryan, and D. Woodiel were not present and could not give a report. B. Duhe, Corresponding Secretary, gave out Certificates of Participation to Local LAS Chapter Representatives to bring back to their local chapters to those who participated. The balance of the certificates will be mailed out individually. The Executive Committee decided to keep this workshop committee active and decided to hold another similar workshop next year. Suggestions for improvement are needed.

Public Relations Booklet-Joe Frank presented an outline of what he thought should be in the booklet. W. Gagliano and D. Woodiel met with Director of Tourist Commission and requested \$5000.00 matching funds to publish this booklet. The proper forms are being prepared for this request.

Cultural Resource Management Policy-W. Gagliano had not yet completed the statement.

Student Membership-Motion made by Joe Frank and seconded by D. Shipman that Joe Frank, Chairperson, draw up necessary by-law changes-membership applications, rules to present at the annual meeting for approval. Student members would include any full-time student through undergraduate college level, dues \$5.00, would receive quarterly newsletter, not annual bulletin, no voting rights. Extra \$5.00 would entitle student to annual bulletin. Student membership would be beneficial to high school students participating in Science Fair projects, Boy Scouts, etc., and is in the best interest of the Louisiana Archaeological Society's policy of educating the general public.

New Chapters: Bogalouosa - J. Manuel still working but chances are not too good; Baton Rouge - W. Gagliano - first local meeting September 22, 1977, in Old State Capitol Building; Lafayette - Several people in Lafayette belong to Lake Charles Chapter. Someone should try to organize a Lafayette Chapter; Shreveport - Dr. C.H. Webb suggested that Pete Gregory be contacted in Natchitoches to organize a Shreveport-Natchitoches chapter.

Local chapter representatives gave a report on what each local chapter was doing. Imperial Calcasieu and Northeast chapter were not engaged in any archaeological projects at present. East Central Chapter was working on Cow Pen Slough Burial Site, under direction of Bill Baker and Dr. Webb. Delta Chapter is working at a partially destroyed Gravel Pit Site (Hornsby Site) Archaic-Tchefuncte, Marksville in context and doing historic archaeology at the Destrehand Manor Plantation.





\*\*\*\*\*

### PROPOSED BY-LAW CHANGES

The membership is hereby notified of proposed changes in the LAS by-laws. These will be submitted for adoption by the membership during the business session at the annual meeting.

#### ARTICLE 1 - MEMBERSHIP AND DUES

Section 1. The six (proposed change to seven) classes of membership in the Society shall pay the following dues: .....(add, "student, \$5.00" at end of sentence).

Section 2. Institutions and other organizations may subscribe to the Society's publications upon annual payment of \$10.00. Such institutions... of the Society. (Proposed addition: Orders for available back issues of the Society's annual publications (bulletin, special releases, and quarterly newsletters) shall cost \$10.00 for each year desired. If only the bulletin is desired, the cost shall be \$7.50. Individuals, who do not wish to become Society members, may purchase the annual bulletin only for \$7.50 and/or the quarterly newsletters for \$2.50 as long as issues are available).

Section 3. Regular, Associate, (insert, "and student") members....

#### ARTICLE II - PUBLICATIONS

Section 2. Except for associates, all classes of membership (proposed deletion, "and subscribing institutions") shall receive (proposed change: "the newsletter") of the Society. (proposed change: "Associate and student members may receive all Society publications by payment of the difference between their reduced dues and regular member dues.").

#### ARTICLE III - OFFICERS, EXECUTIVE COMMITTEE, EDITOR, AND DUTIES

Section 9. The executive committee shall consist of all officers of the Society, one representative from each duly incorporated local chapter (proposed change: ", and two at-large representatives from the general membership"). (Proposed addition: "Affiliated chapters shall choose their representatives through local elections or appointments. At-large representatives shall be appointed by the president from recommendations of the executive committee.)

\*\*\*

THE 1978 ANNUAL MEETING

The 1978 meeting of the Louisiana Archaeological Society will be held at the Sheraton Baton Rouge Motor Hotel, I-10 at College Drive on January 27-29, 1978. Registration will start on the evening of Friday, January 27th. Technical sessions and a luncheon are scheduled for Saturday, January 28th. A reception will be held on Saturday evening and the technical meetings will continue on Sunday morning, January 29th. Housing accommodations and other details will be mailed at a later date along with registration blanks and program.

The annual meeting is the highlight of LAS activities. Last year's meeting in Metairie set a precedent that will be hard to beat. However, preliminary plans suggest that the members will have every opportunity to participate in an interesting technical program, "talk archeology" and just "socialize."

"Late Mississippi and Historic Contact Periods" has been suggested as a theme for a symposium session. However, in order to encourage broad participation in the technical session, a general call for papers is being issued to the membership at this time. Hopefully a strong and interesting program can be put together from volunteer papers. If you like the theme and wish to contribute a related paper, please do. If you prefer to report on another topic, your paper will be welcomed. If you have another suggestion for a symposium theme, the program committee will be pleased to take it under consideration. Remember, much of the success of the annual meeting depends on papers contributed by the membership.

Please submit paper titles and an abstract of 150 words or less to:

---

Richard A. Weinstein  
LAS Program Committee  
1260 Main Street  
Baton Rouge, LA 70802

Papers will normally be 20 minutes in length. Titles and abstracts should be submitted by November 30, 1977.

The Great Pumpkin will be grateful!

\*\*\*\*

BUMPER STICKER SLOGAN CONTEST  
Brian Duhe, Reporter

We have received several suggestions for slogans for LAS bumper stickers:

1. Your Past is Your Future LAS  
Charles Fleming  
Rt. 4, Box 188  
Lake Charles, LA 70601
2. We Preserve the Past for the Future  
Forrest A. Travicca III  
P.O. Box 181  
Lockport, LA 70374
3. Unearth Knowledge - Support the Louisiana Archaeological Society  
Tommy Johnson  
307 Dulles Blvd.  
Lafayette, LA 70506
4. Happiness is a Thing of the Past  
Join LAS and Say it with a Smile. L.A.S.  
Myrna Fleming  
Rt. 4, Box 188  
Lake Charles, LA 70601
5. Digging for Knowledge  
Louisiana Archaeological Society  
and  
Archaeologist Do It In the Dirt  
John W. Crader  
411 N. Craig  
Jennings, LA 70547
6. I Dig You Man  
Dr. C.H. Webb  
3904 Creswell Road  
Shreveport, LA 71106

Additional suggestions should be sent to: Brian Duhe, LAS Corresponding Secretary, P.O. Drawer B, Reserve, Louisiana 70084.

\*\*\*\*

LAS SUMMER FIELD WORKSHOP  
Debbie Woodiel, Reporter

The first LAS summer field workshop held July 22-24 investigated a portion of the Fish Creek Site (16GR17) in Grant Parish. The multiple mound

site, which had never been studied by archaeologists, was well suited to the surface collecting, instrument survey, and excavating exercises. Camp Kwanokaska, whose use was generously provided by Mr. W.H. "Dub" Holmes of Georgetown, made an ideal place for lectures and lab activities.

The workshop began Friday morning (preliminary lessons in anthropological belly dancing were given the night before by Myrna Fleming) with a welcome address by Jon Gibson, followed by Tom Guderjan's lecture on field notes. Activities then moved to the site and included topographic map reading (George Castille) and grid lay-out and surface collecting (Frank Servello and the Fort Polk survey crew). An evening lecture on ceramic manufacture by Alan Toth completed the first day's activities.

Saturday morning began with Kass Byrd's lecture on identification of faunal remains followed by Jon Gibson's sampling lecture, preparatory to excavation activities of the afternoon. Three test pits were opened and excavators worked with shovels, trowels, and screens and recorded their observations. Concurrent with the excavations were training sessions in instrument surveying conducted by Bill Spencer and Richard Beaver. Geologist John Lenzer pointed out stratigraphic zones and related them to the geomorphic processes which produced them.

A delicious BBQ dinner (prepared by Mike's Barbeque, Tullos, LA) was fun but the highlight of the evening was Dr. Joel Shiner's presentation on chipped stone artifacts. Dr. Shiner, Professor of Anthropology at Southern Methodist University, not only lectured, but also demonstrated his expertise by making chipped stone tools. His presentation was both enjoyable and profitable to all.

The final morning was set aside to analyze the results of our field investigations. Three groups, led by Dr. Shiner, Tommy Ryan, and Jim Moorehead, analyzed the artifacts collected on the previous two days. Jon Gibson also conducted an exercise in statistical analysis by demonstrating a Chi-square test of the lithic artifact distribution.

Special thanks are due to all those instructors who gave of their time and abilities, to Dr. Shiner and Mr. Holmes, and to the field workshop committee members (Jon Gibson, Tommy Ryan, and Debbie Woodiel) who organized this event. But the program's success must be credited to the enthusiastic participation of so many LAS members who provided the motivation and good company for all of us. We all had such a good time and hope to see everybody again next year for another workshop.

If any LAS member has any suggestions to make next year's program better, please send it to the corresponding secretary, Brian J. Duhe.

The following people attended the workshop.

Aucoin, Barbara A.	Baker, Bill	Baker, Irma
2545 Madrid St.	P.O. Box 637	P.O. Box 637
New Orleans, LA 70122	Jonesville, LA 71343	Jonesville, LA 71343

Baker, Pat  
P.O. Box 637  
Jonesville, LA 71343

Barnes, Rain  
Ft. Polk Archaeological  
Survey

Beavers, Richard C.  
2109 Celham  
New Orleans, LA 70118

Bissel, Joseph J.  
502 Sena Dr.  
Metairie, LA 70005

Bissel, Norma  
502 Sena Dr.  
Metairie, LA 70005

Bissel, Todd  
502 Sena Dr.  
Metairie, LA 70005

Brooks, Kathy  
Coastal Environments, Inc.  
1260 Main Street  
Baton Rouge, LA 70800

Brown, Gloria  
809 Jeff. Hts. Ave.  
Jefferson, LA 70121

Brown, Tom  
809 Jeff. Hts. Ave.  
Jefferson, LA 70121

Bruder, Al  
1811 Benjamin St.  
Arabi, LA 70032

Bruder, Joan  
1811 Benjamin St.  
Arabi, LA 70032

Buckley, Ruth  
1616 Fulton Dr.  
Alexandria, LA 71301

Burden, Eileen  
Coastal Environments, Inc.  
1260 Main St.  
Baton Rouge, LA 70800

Burrows, Anita  
3708B Rockford Heights  
Metairie, LA 70002

Byrd, Kathleen  
(Cass talked on faunal  
analysis)  
Dept. of Geography &  
Anthropology  
LSU  
Baton Rouge, LA 70893

Comardelle, Brenda  
40 Gardenia Lane  
Waggaman, LA 70094

Comardelle, Michael  
40 Gardenia Lane  
Waggaman, LA 70094

Carrigee, Janet  
308 Central Ave.  
Jefferson, LA 70121

Castille, George  
1165 Seyburn Dr.  
Baton Rouge, LA 70800

Cooper, Bob  
6620 Fennwood  
Zachary, LA 70791

Cooper, Liza  
6620 Fennwood  
Zachary, LA 70791

Dixey, Rusty  
Fort Polk Arch. Survey

DuCote, Greg  
Fort Polk Arch. Survey

Duhe, Brian J.  
P.O. Drawer B  
Reserve, LA 70084

Duhe, Lafayette T.  
P.O. Drawer B  
Reserve, LA 70084

Fleming, Charles  
Rt. 4, Box 188  
Lake Charles, LA 70601

Fleming, Myrna  
Rt. 4, Box 188  
Lake Charles, LA 70601

Fogleman, James A.  
P.O. Box 81  
Morrow, LA 71356

Fredlund, Glen  
Fort Polk Arch. Survey

Gast, Douglas  
7309 Edward St.  
New Orleans, LA 70126

Gast, Jacque  
7309 Edward St.  
New Orleans, LA 70126

Gast, Stewart  
7309 Edward St.  
New Orleans, LA 70126

Gibson, Jon L. (Dr.)  
120 Beta Dr.  
Lafayette, LA 70506

Gillard, Clara  
1008 Elizabeth St.  
Westlake, LA 70669

Gillard, Ronnie  
1008 Elizabeth St.  
Westlake, LA 70669

Gillard, Bart  
1008 Elizabeth St.  
Westlake, LA 70669

Goldsmith, Wayne  
Fort Polk Arch. Survey

Guderjan, Tom  
Fort Polk Arch. Survey

Guichard, Jacqueline  
305 Central Ave.  
Jefferson, LA 70121

Gullie, Ruth B.  
114 Brooklyn Ave.  
Jefferson, LA 70121

Hanson, Eileen M.  
4601 Cardenas Dr.  
New Orleans, LA 70127

Hanson, Sarah  
4601 Cardenas Dr.  
New Orleans, LA 70127

Henson, Joan  
5032 Purdue Dr.  
Metairie, LA 70001

Hodges, Paul  
319 Egan St.  
Monroe, LA 71201

Jeane, David R.  
305 Hickory  
Springhill, LA 71075

Johnson, Tommy  
307 Dulles Blvd.  
Lafayette, LA 70501

Johnson, Britt  
307 Dulles Blvd.  
Lafayette, LA 70501

Klare, Arthur  
Rt. 4, Box 184 KL  
Lake Charles, LA 70601

Klare, Sue  
Rt. 4, Box 184 KL  
Lake Charles, LA 70601

Koncinsky, George  
1612 Fulton Dr.  
Alexandria, LA 71301

Koncinsky, Helen  
1612 Fulton Dr.  
Alexandria, LA 71301

Landry, Laura  
P.O. Box 21327  
LSU  
Baton Rouge, LA 70800

Lenzer, John P.  
(talk on stratigraphy)  
P.O. Box 1145  
Denham Springs, LA 70726

Miranda, Sue  
503 Sena Dr.  
Metairie, LA 70001

Miranda, Liza  
503 Sena Dr.  
Metairie, LA 70001

Morgan, Jim  
Fort Polk Arch. Survey

Morehead, Jim  
Fort Polk Arch. Survey

Neuman, Robert  
LSU  
Baton Rouge, LA 70800

Neuman, P.  
Fort Polk Arch. Survey

Olson, Isabelle  
225 No. Alexander St.  
New Orleans, LA 70100

Orr, Hazel  
P.O. Box 471  
Pass Christian, MS 39571

Pendley, Bettie  
5627 Bancroft Dr.  
New Orleans, LA 70100

Perry, Steve  
13303 Aberdeen  
Baton Rouge, LA 70808

Phillips, Tim  
Fort Polk Arch. Survey

Poole, Russel  
2040 Francais Dr.  
Shreveport, LA 71108

Reggio, Judy  
1913 Eisenhower Dr.  
Metairie, LA 70001

Ryan, Thomas M.  
109 W. William David Parkway  
Metairie, LA 70005

Richardson, Miles  
1352 Aberdeen  
Baton Rouge, LA 70800

Richardson, Victoria  
1352 Aberdeen  
Baton Rouge, LA 70800

Sanders, Earl  
2545 Madrid St.  
New Orleans, LA 70100

Servello, Frank (Dr.)  
1604 Bertrand Drive  
Lafayette, LA 70501

Sibley, Ann Higgins  
2118 Edinborn  
Metairie, LA 70001

Sibley, Jason  
1907 Shannon Rd.  
Alexandria, LA 71301

Sibley, Lynn  
1907 Shannon Rd.  
Alexandria, LA 71301

Sibley, Sherry  
1907 Shannon Rd.  
Alexandria, LA 71301

Spencer, Bill  
1526 Kenmore Ave.  
Baton Rouge, LA 70808

Stout, Michael E.  
1309 Marengo St.  
New Orleans, LA 70115

Talley, Jeanette B.  
16 San Mater Ave.  
Jefferson, LA 70121

Vrbaskovich, Robert  
541 Warrington Dr.  
New Orleans, LA 70100

Willig, Judy  
Fort Polk Arch. Survey

Toth, Alan  
349 Flannery Rd., #30  
Baton Rouge, LA 70815

Walker, Richard  
Rt. 2, Box 213-A  
Deville, LA 71328

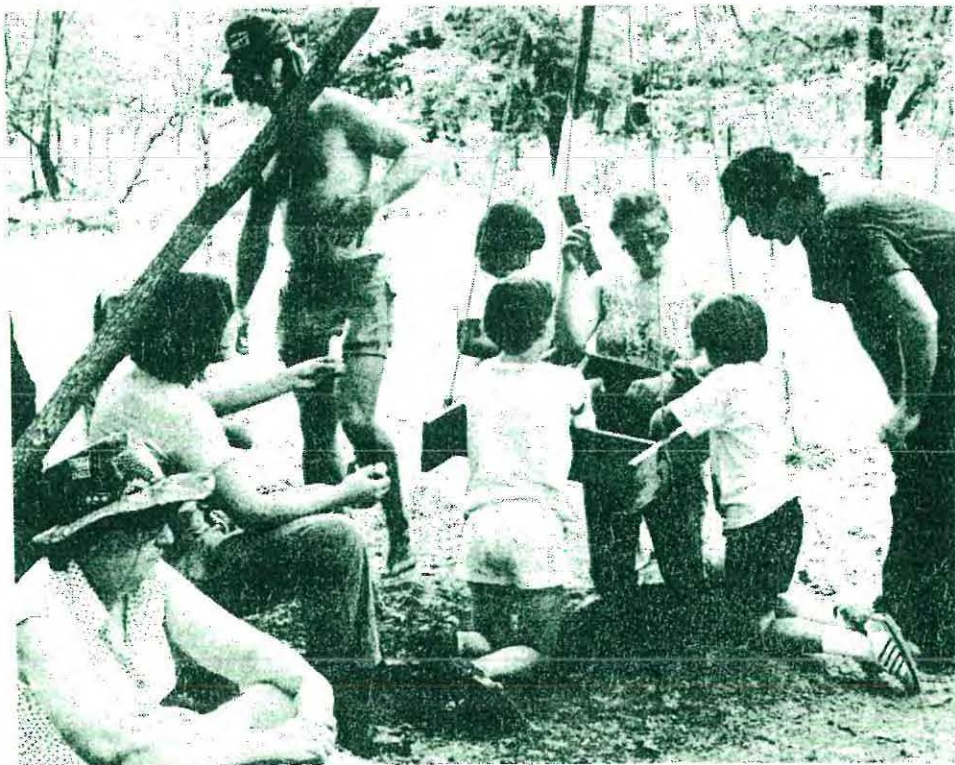
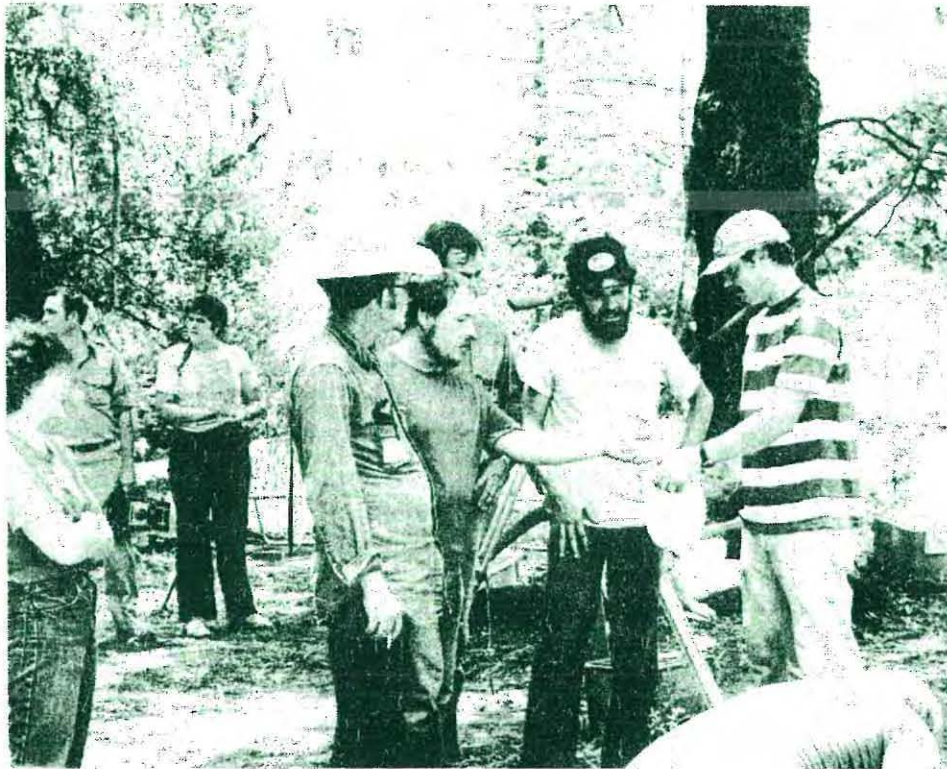
Woodiel, Debbie  
1645 Nicholson Dr.  
Baton Rouge, LA 70802

Toth, Carolyn  
349 Flannery Rd., #30  
Baton Rouge, LA 70815

Walker, Rose  
Rt. 2, Box 213-A  
Deville, LA 71328

Everyone who registered and participated in the three day LAS Field Workshop will receive a certificate indicating that they attended and participated. An alphabetical listing of LAS Workshop Attendance is attached. Please check to see that your name is on the list and that it is spelled correctly. Make sure that your correct address is listed. If there are any omissions, misspellings, etc., contact Mr. Brian Duhe, Corresponding Secretary, LAS, P.O. Drawer B, Reserve, LA, phone--536-1161.







\*\*\*\*

#### CURRENT RESEARCH

News from State Archaeologist's Office, George Castille, Reporter.

1. Civil War Cannon. On September 21, 1977, the staff of the State Archaeologist's Office, Division of Archaeology and Historic Preservation, participated in the raising of a Civil War cannon from Lake Pontchartrain. The cannon is about 9 1/2 feet long and weighs roughly 6000 lbs. According to Dr. Bertram Groene, history professor at Southeastern Louisiana University, it was probably an 18-pound siege or garrison piece placed along the shore

of Lake Pontchartrain during the Civil War to protect a nearby railroad. Prior to abandonment, the cannon had been rendered unserviceable. One trunnion and the cascabel were broken off by the Civil War defenders to prevent the other side from reusing the cannon. The Office of State Parks supervised the raising of the cannon from the lake. State Parks also will be responsible for the treatment and stabilization of the cannon. State officials are currently seeking additional funding for future survey and evaluation of the underwater site from which the cannon was raised. Such a survey would provide useful information for the management of this and other underwater cultural resources. Some time during this stabilization period (it will take about one year) the Louisiana Archaeological Survey and Antiquities Commission will make recommendations as to who will become custodian of the cannon. The final decision will be made by Sandra Thompson, Secretary of the Department of Culture, Recreation and Tourism.

2. Angola Excavations. Between October 11 and October 22, Dr. Jeffrey P. Brain of Harvard University's Peabody Museum will direct excavations at the Bloodhound Hill site (16WF21). Initial excavations revealed a possible village area at this early historic Indian site (see LAS Newsletter Vol. 4, No. 3, p. 13). Hopefully, this year's excavations will determine the true identity of the occupants of this significant community.

USL Center for Archaeological Studies, Jon Gibson, Reporter.

1. Melvin Cousins and Paul LaHaye, USL undergraduates, are conducting an intensive survey, based on quadrant sampling techniques, in a confined area near Arnaudville, Louisiana. This area lies between the Coteau Ridge (western escarpment of the Mississippi alluvial valley) and the Teche Ridge, north and slightly east of Lafayette. The area is known to contain several late Archaic sites as well as Poverty Point and early, middle, and late Tchefuncte components.

2. Kass Byrd, Research Assistant at LSU, is analyzing faunal materials recovered by Center personnel during a survey of the Lower Atchafalaya River and several of its tributaries, south of Morgan City, Louisiana. Preliminary identifications point to utilization of deer, muskrat, and numerous fish species.

3. Dr. Jon L. Gibson, Center Director and Department Head, is conducting a working seminar on ceramic classification for the fall semester. A reconstituted type-variety typology, based on statistical attribute associations is being applied to Tchefuncte potteries from throughout the state in an effort to improve existent systems. Participating in the seminar are USL students Bobby Jordan, Mel Cousins, Tom Ledbetter, Mary Matson, Greg DuCote, Tim Phillips, and Rain Barnes. Recurrent visitors include Center personnel on the Fort Polk dig and LSU graduate students.

4. The USL Center for Archaeological Studies announces several new staff appointments: Rain Barnes, Diane Dixey, and Lee Dishman. These individuals will be responsible for collection preparation, maintenance, and curation, and additionally will provide assistance on continuing cultural resource surveys.

MESA (Morrow Elementary School Archaeology), James A. Fogleman, Reporter.

1. Students involved in the Archaeology enrichment program at Morrow Elementary School, under direction of this reporter, have been involved in surface collecting of the Bordelon-Mayberry mound. The site is located on an old Teche-Mississippi meander belt ridge, flanked by Bayou Jack, about 8 miles east of Morrow in northern St. Landry Parish.

About a third of the 3.5m high conical mound was recently removed for land fill. Subsequent ditching operations and heavy rains around the mound flank exposed two extended burials at the mound base. Crania lay about 1.0m apart with feet extending in opposite directions along an east-west axis. In the chest cavity of the easternmost burial were three greenstone beads; one large tubular (55mm x 8mm) and two small "fat" discs (2-4mm long x 5-6mm diameter). Other cultural materials consisted of a few small badly eroded sherds.

Students participating in the work included: Larry Aymond, Paul Cormier, Weston Cormier, and Roger Simpson. Work at the site has been suspended temporarily awaiting the exodus of an army of black widow spiders.

2. Plane table mapping of the important Stelly mound group on Bayou Petit Prairie, near LeBeau in St. Landry Parish, has been completed by the MESA team. The completed map shows the alignment of the 2 largest mounds and connective ridge to be 80° W of north, coinciding with the orientation of several other well-known Poverty Point sites. Controlled surface collections are also being made by the MESA team. Poverty Point objects (typically biconical and amorphous), microliths, dart points, hematite plummetts, stone beads, debris, and debitage are major constituents of the material cultural inventory.

\*\*\*\*

CHAPTER NEWS

Imperial Calcasieu Chapter, Myrna Fleming, Reporter.

In the last six months the ICC has been honored by some ten speakers, all active members:

J.B. Toups ..... "Pottery Making Techniques of Ancient Louisiana Indians;"  
"Yucatan Trip."  
Tim Dugas ..... "The Relativities of Anthropology and Archaeology;"  
"Mexico Trip."  
Tommy Johnson .... "Mounds in Lafayette Parish."  
O'Neal Smith ..... "Poverty Point Trip."  
Mark Wentz ..... "The Arkansas Society Field School, 1977."  
Art Klare ..... "LAS Fish Creek School, 1977."  
Sue Klare ..... "Red River Explorations;" "LAS Fish Creek School, 1977."  
Joe Frank ..... "History of the Caddoan Conference;" "Pottery Identification."  
Clara Gillard .... "Cahokia Mounds;" "Koster Site, III."  
Myrna Fleming .... "Sites in Winn, Natchitoches, Red River, and Vernon Parishes."

In addition to speakers we have seen these films: "The Ancient Africans," "Ancient America Speaks," "Pompeii, Death of a City," "The Ancient Indians of Peru," and "Coastal Road Building in Louisiana." (These films are available through the Calcasieu Parish and Louisiana State libraries with the exception of the "Ancient America Speaks", film courtesy of the Mormon Church.)

Artifact displays have been furnished by: J.B. Toups, Mark Wentz, Tim Dugas, Clara Gillard, Sue Klare, Art Klare, Joe Frank, Gordon Wooster, Tommy Johnson, Myrna and Charles Fleming, Bob Coleman, O'Neal Smith, Terrell Wosley and Ralph Darnell.

Members attending the Fish Creek LAS Field School were: Sue and Art Klare, Tommy and Brent Johnson, Myrna and Charles Fleming, Clara, Ronnie and Bart Gillard.

We would like to take this opportunity to thank everyone responsible for making the Fish Creek school the pleasant success it turned out to be. It was a warm, gratifying experience...especially WARM. In spite of the intense heat, there was the continuous hum of merriment and excitement amongst the participants and the cool nights were amazingly rejuvenating. Our teachers were patient, kind and extremely effective--in fact, these three words might well sum up the Fish Creek weekend: Perspiring, Inspiring and Aspiring!

Due to the inflexibility of responsibilities, time conflicts, heat, bugs, snakes, and possibly old age, we have not had a chapter dig this summer; however, certain ICC members have courageously or crazily braved the aforementioned hazards and ranged far and wide in the names of Anthropology and Archaeology (example: see list of speakers and subjects).

We have around thirteen members who are adept with metal detectors and most of them are interested in the Civil War in Louisiana and the recovery of related artifacts; hence, the explorations of the Red and Sabine rivers by the Klares, Gillards, Flemings and D. Kinbrough involving some other Louisiana historic components as well as ancient Indian sites.

Our faithful projectionist, Charles Fleming, has discovered an apparently undisturbed mound near Campti, Louisiana. He has, also, surveyed another mound near Campti which he appropriately designated "Seedtick Mound." Thanks to the encouragement of Frank Servello, we can expect a report of the Campti Mounds from Charles before too long.

Because a chapter is the cohesive for its members, it is satisfying to observe the ICC functioning well in its basic purpose. We are extremely fortunate in our number of excellent contacts this summer; people all over Louisiana are coming forward in the interest, defense, and preservation of Louisiana's heritage.

Each ICC member in their own way is "digging": digging into history by means of a library, earth removal tools, Old Timer's tales, and excursions; therefore, there is more truth than poetry when we call to each other in passing, "See you at the dig!"

Delta Chapter, Joe Manuel, Reporter.

Delta Chapter is now meeting in room 140 of the Liberal Arts Building on the campus of UNO. This is the first floor auditorium in the east end of the building. You are invited to join us there for our regular monthly meetings at 7:30 P.M. on October 20th and November 17th. In fact, you are invited to become a member of our chapter. I have noticed in looking over the state membership list that a number of our state members who live in and around New Orleans are not members of our chapter. This is probably the case in other areas of the state. Chapter membership is optional, but if you are not a member of a chapter you may be missing much of the fun and companionship in Louisiana archaeology. Chapter membership offers you field activities, a chapter newsletter and informative monthly meetings. Our September meeting was typical of what can be expected. Dr. Alan Toth presented a dynamic talk on "Marksville-Hopewell relations in Louisiana". He included as part of that presentation slides of artifacts and mounds from those cultures.

In case some of you missed it, I would like to call attention to an article in the States-Item, Wednesday, September 28, 1977, Section D, page 1. John Pope, a staff writer for the paper, devoted almost the whole page to the Father of the Fatherland Site, also known as the Grand Man of the Grand Village, better known as Stu Neitzel. The title of the article is "Bob Neitzel, Down-Home Archaeologist".

Work at the Hornsby Site continues with plans to excavate the mound as well as some hopefully undisturbed areas on the midden.

East Central Louisiana, J. Logan Sewell, Reporter.

At the September meeting the club voted to skip the October, November and December meetings and to convene again at the January date.

According to the by-laws, we must furnish you the nominations for new officers in December for you to elect at the January meeting. Accordingly, the nominating committee will mail you their nominations and at the January meeting you may make nominations from the floor.

We will also launch our year 1978 with plans for a social and "hunt" in the spring. Please plan to attend our election and business meeting and participate in a better year in 1978!

B A L L O T

After soliciting recommendations from the membership and ascertaining the willingness of these persons to serve as officers, the LAS nominating committee (composed of C.H. Webb, J. Frank, and J. Manuel) proposes the following nominations.

FOR PRESIDENT-ELECT

..... William G. Haag

FOR TREASURER

..... William S. Baker, Jr.

Please vote. These officers cannot be automatically elected. A vote of the membership is required. Return ballots by November 30 to:

Tommy Ryan  
LAS Recording Secretary  
U.S. Army Corps of Engineers  
New Orleans District  
P.O. Box 60267  
New Orleans, LA 70160

GIBSON, DR JON L  
120 BETA DR  
LAFAYETTE LA  
70501

Handwritten notes and stamps in the bottom left corner, including a date stamp that appears to read "OCT 29 1967".

UNIVERSITY OF SOUTHERN CALIFORNIA  
OFFICE OF THE REGISTRAR  
STAMP IN THE bottom right corner.