



NEWSLETTER OF THE LOUISIANA ARCHAEOLOGICAL SOCIETY

Spring 2007

Vol. 35, No.1

LAS site tours to Wolf Creek Rock Shelter and Fullerton Mill Site - 2/9/07



Scenes from the 2007 LAS Meeting in Leesville, La. February 9, 10, & 11. More photos and meeting news on p. 4



Dr. Jay Johnson of Ole Miss giving keynote address



LAS Newsletter printed courtesy of
R. Christopher Goodwin and Associates, Inc.
New Orleans

LAS Chapter and Membership News

Baton Rouge LAS Report

The Baton Rouge Chapter of LAS has continued to meet the **last Wednesday of every month**. At each meeting we've had good fortune with a wide variety of speakers.

January 30

Bill Lee gave a presentation concerning the collections held by the LSU Museums of Natural Science and Natural History.

February 27

Dr. Charles McGimsey gave a presentation entitled "Some Civil War sites in South Louisiana." This talk illustrated some of the Civil War investigations that Dr. McGimsey has had the opportunity to conduct over the last 10 years. These investigations ranged from searching for various gunboats, to exploring small skirmishes, to documenting various earthworks. The sites discussed were found within a region between the Sabine River to Bayou LaFourche and north into Avoyelles Parish.

March 27

Ms. Rachel Watson of the Louisiana Division of Archaeology, Department of Culture, Recreation and Tourism, gave a talk entitled "Louisiana State Historic Preservation Office Perspectives of Hurricanes Katrina & Rita: Balancing Recovery Efforts and Archaeological Preservation." Also included during the presentation was a preview of cultural resources data base being developed by the Division of Archaeology.

A number of the Baton Rouge Chapter members also attended the LAS Annual Conference at the Landmark Hotel in Leesville on February 9, 10, and 11, 2007, hosted by The West-Louisiana Archaeology Club. At the conference Baton Rouge Chapter Member Norm Davis gave a presentation on "The General Orientation and Dimensions of the Watson Brake and Poverty Point Sites."

Northeast LAS

The Northeast Chapter usually meets on third Thursday of the month except December and June-August, but we are adaptable if a program is available at other times. We are meeting at present in the new Natural History Museum-3rd floor Sandel Hall (former library) ULM campus in Monroe. The new meeting place is a program in itself with all the exhibits assembled from all over the university.

In **November**, Jeff Girard gave a program on Caddo salt works. **January and February**, Les Davis, a charter member 44 years ago, led a sharing of memories of our "Good Old Days". We also remembered the starts and stops involved in the beginnings of LAS.

The **March** meeting was our party and we enjoyed the food and fun together. **April and May** we will catch up on what Joe Saunders is doing (we declared him a life member of NELAS) The topic is probably going to be about Poverty Point Owls. If we are very fortunate, Marvin Jeter will be there. When he has the program we get information/education in the most pleasing form!!

West Louisiana Archaeology Club

The West Louisiana Archaeology Club meets at the West Louisiana Museum, 803 N. Third Street, Leesville, Louisiana, on the **third Thursday of the month**. In **February 2007**, the club hosted the 33rd annual Louisiana Archaeological Society's Conference. The conference had approximately 70 participants. The club appreciates the support of the Vernon Parish Tourism Commission. Through their financial support, we were able to provide refreshments in the hotel hospitality room to the conference participants.

The West Louisiana Archaeology Club is assisting the Anacoco Elementary School's Challenge Club with speakers. The Challenge Club is a group of approximately 60 students from grades third to sixth. Each month the Challenge Club studies fields of academia. During **the month of April**, the Challenge Club will study archaeology and has requested members of the West Louisiana Archaeology Club to lecture on the subject matter.

The West Louisiana Archaeology Club is open and available to the general public. In keeping with the spirit of the Louisiana Archaeological Society's mission, this local chapter hosts educational lectures to the general public, assists local regional archaeologists, investigates local archaeological sites for the Louisiana Archaeological Conservancy and offers educational lectures to local area schools. For more information about the West Louisiana Archaeology Club you may contact the club president, John Guy, (337) 238 - 3277.

*LAS Chapter and Membership News (continued)***Central Louisiana Archaeology Club News**

Officers are as follow: President-Nancy Affeltranger, Vice President – Tommy Delrie, Secretary – Rachael Conner, Treasurer – Tommy Sayer, and LAS Representative – Margaret Cheramie

We continue to have good speakers. Dr. Pete Gregory spoke on "When Indian Artifacts Are Not on Indian Sites, or Why Indian Artifacts Are Found on European Sites". Tim Phillips spoke on CCC camps. He pointed out that many were taken down and the wood used to make new camps. These camps were created to employ young men during the Great Depression, so that when WWII came along, most of them were fit.

We are also going to help George Avery by adding to his knowledge of Camp Beaugard. Charlie Affeltranger found a single marked grave at the camp that we have information about on the family's genealogy. His name was Cornelius Nugent (1810-1865). He was an early farmer on Flagon Creek. Kathleen Adams also has information on the area.

We have two upcoming projects with Jeff Girard. One is on Tommy Delrie's family's property and another on a plantation.

Editor's Corner-Dennis Jones

The first order of business is to thank the good people at R. Christopher Goodwin and Associates (RCG) for offering to print the LAS newsletter. This is an enormous savings to LAS and I look forward to working with them on future issues. Special thanks go to Jim Eberwine, Heidi Post, and Bill Athens of the New Orleans office of RCG.

You will notice that this issue is thicker than previous issues. That's because we have the minutes of two meeting cycles, as well as many submissions from our members. The minutes are complete records of the decisions that impact LAS membership. The executive committee, which includes me, think that it's important that the membership know what's going on. "Transparency" is always a good thing!! Also, the minutes in this issue are the last ones recorded by Maureen Downey. She did a great job and was always on time (pretty much) with getting them to me for the newsletter. Rachael Watson is taking over for Maureen and I'm sure that she will continue to meet the high standards set by Maureen. I want to say thanks to them for doing what is often a thankless job.

As to the number of submissions, I find that very gratifying. One of the main reasons I took on the job as newsletter editor is because I thought it was important that people knew the amount of archaeology going on in the state. The Regional Archaeologists have been great with their consistent and in depth contributions!! I would like to hear more from the various contract archaeologists in the state, though, and I will continue to nag them about future contributions.

Finally, I had a great time at Leesville, seeing old friends and actually learning a lot during the papers. The highlight for me, though, was seeing the Wolf Creek Rock Shelter and Fullerton Mill sites. Velicia Bergstrom of the US Forest Service led a large convoy to those very interesting places and gave everyone a good background about each site. I hope we continue to make site tours a part of our yearly meetings.

Delta Chapter News

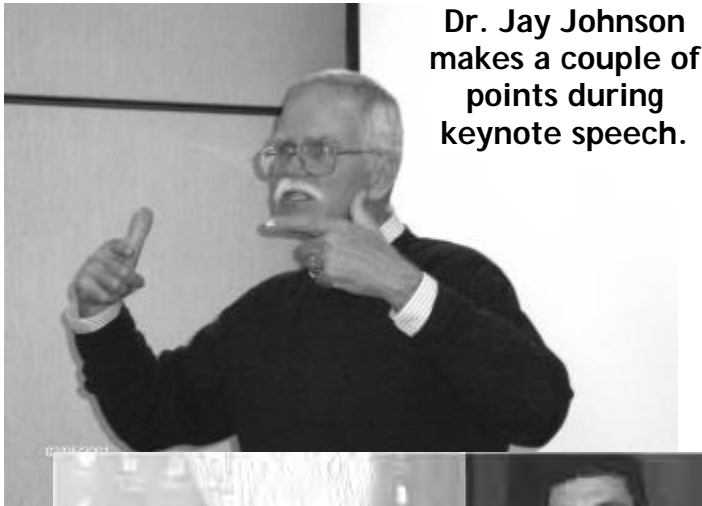
The Delta Chapter of LAS now meets on the 3rd Saturday of each month at 2:00 pm at the St. Charles Parish Library located in Luling, LA. The address is 105 Lakewood Dr., Luling. Their email address is www.stcharles.lib.la.us. The Delta Chapter also now has a website at www.dclaarchaeology.org. If you have any questions or program ideas contact Lucretia McBride. Her contact information is (985)223-0685, fgm@dclaarchaeology.org or forensicgal@bellsouth.net or Lucretia McBride, P.O. Box 1271, Grey, Louisiana 70359-1271.

DON'T FORGET !!!

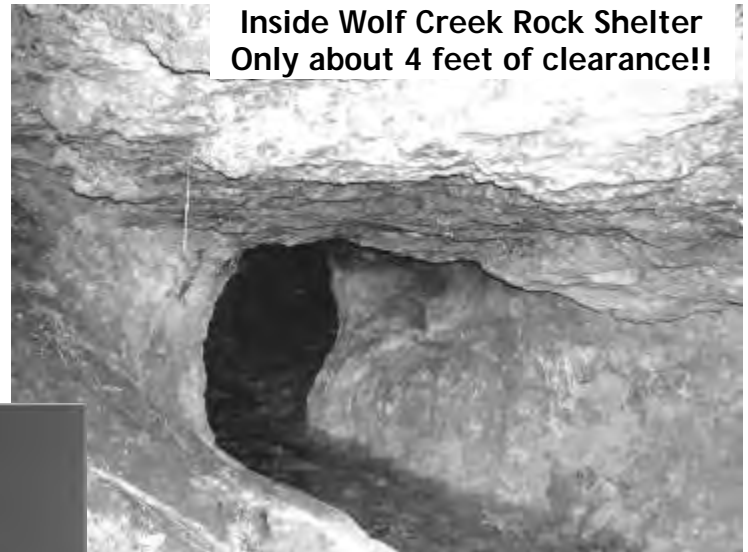
LAS gets a commission from the \$\$ for every order to Barnes and Nobles when accessed from the LAS website. Click on the Barnes and Nobles icon at the bottom of the home page to order books, CDs, DVDs and other products. The website is www.laarchaeology.org

Double Don't Forget !!!

Please remember to renew your membership for LAS in 2007 if you have not done so. Send check to:
 Josetta LaBoeuf/LAS Treasurer
 9364 Rainford Rd
 Baton Rouge, LA 70810



Dr. Jay Johnson makes a couple of points during keynote speech.



**Inside Wolf Creek Rock Shelter
Only about 4 feet of clearance!!**



LAS President, Ellen Ibert, presents Mr. Dustin Fuqua the first Marie Standifer Award for contributions by a student to Louisiana archaeology. This award honors the memory and accomplishments of recently deceased LAS member Marie Standifer.

Schedule of Papers

- 8:00 - 8:10 Welcoming Remarks - **Ellen Ibert**, LAS President
- 8:10 - 8:40 Louisiana State Historic Preservation Office
Perspectives of Hurricanes Katrina & Rita:
Balancing Recovery Efforts and Archaeological
Preservation - **Rachel Watson**
- 8:40 - 9:00 Seeking Input on the State's Historic Preservation Plan - **Nancy Hawkins**
- 9:00 - 9:20 Preserving the Tangible and Intangible: Heritage Resources Management at Cane River
Creole National Historical Park - **Dustin Fuqua**
- 9:20 - 9:40 A New History of Poverty Point? Perspectives from Recent Excavations at Mound A –
T.R. Kidder et al. (delivered by **Tim Schilling**)
- 10:00 -10:20 How do You Get Your Site on the World Heritage List? Current Efforts on Behalf of
Poverty Point State Historic Site - **Diana Greenlee**
- 10:20 -10:40 Recent Investigations at the Sims Site (16SC2) -**Rob Mann**
- 10:40 - 11:00 Comments on Early Caddo Culture - **Jeff Girard**
- 11:20 - 11:40 Ways to improve the relationship between archaeologists and members of the public involved in
African-American cemetery excavations - **Jim Eberwine**
- 11:40 - 12:00 Putting Fort Polk on the Map - **Ellen Ebert**
- 1:30 - 1:50 (16BE99) Screaming Eagle Site, Site Evaluation -- **John H. Guy, Jr., and Ellen Ibert**
- 1:50 - 2:10 Preliminary Faunal Analysis from the Portage Site (16SM5) - **Taylor Lasley**
- 2:10 - 2:30 Preliminary Investigations at the Jeff Simmons Site (16CM84) –**Nathanael Heller**
- 2:50 - 3:10 Hedgepeth-Again ? – **Joe Saunders, Thurman Allen, and John Norris**
- 3:10 – 3:30 The Tew Site: A Multicomponent Site in Beauregard Parish –**James Allen Green**
- 3:30 – 3:50 Prehistoric Astronomy at the Watson Brake Site –**Norm Davis**
- 7:00 pm Keynote Address during Banquet – *Remote Sensing, Geophysical Survey, and Ground Truth Archaeology in the Lower Mississippi Valley* – **Dr. Jav Johnson**. University of Mississippi.

For those of you who missed the LAS meeting, this is the program of speakers on Saturday, Feb. 10.

The C. C. Jones Collections from a Protohistoric Caddo Site in the Vicinity of Shreveport, LA

By Timothy K. Perttula

Three Caddo vessels given to or purchased from Charles C. Jones, Jr. in the 19th century are in the American Museum of Natural History (AMNH) collections (2-866, 2867, and 2-868) from a late 17th to early 18th century site in northwestern Louisiana. I recently had the opportunity to document these vessels as part of a Caddo Nation of Oklahoma Native American Graves Protection and Repatriation documentation project (Gonzalez et al. 2005).

One of the vessels, a well-made Keno Trailed, *var. Glendora* bottle, is currently on display in the Eastern Woodlands People exhibit at the AMNH. The other two vessels include a second Keno Trailed, *var. Glendora* bottle and a trailed-punctated bottle that has a meandering negative scroll motif otherwise regularly executed with engraved lines on Hodges Engraved bottles. Walker (1936:13) and Webb (1945:64) have both commented on the similarity of the vessels in the Jones collection to other finely decorated burials from historic Caddo cemeteries in sites between Natchitoches and Shreveport, Louisiana.

These vessels were obtained by the American Museum of Natural History between 1869-1890, given or purchased by Charles Colcock Jones, Jr. Mr. Jones (1831-1893) was a Harvard-educated lawyer, and mayor of Savannah, Georgia, as well as a well-known antiquarian, at the beginning of the Civil War. According to Stoltman (2004:17), Jones, and his brother Joseph, inaugurated "serious archeological research in the Southeast" during the early modern era (1861-1933).

The only information available at the AMNH about the vessels is that they came from a site in the vicinity of Shreveport, Louisiana. Robert Neuman (1984:16) had noted that Charles Jones, Jr., had illustrated in an 1873 publication (Jones 1873: 45, Figures 3 and 4) "two vessels purportedly taken from an ancient burial ground in the Mississippi Valley, near Shreveport." The AMNH vessels are believed to be from this site mentioned by Jones in his now classic *Antiquities of the Southern Indians*

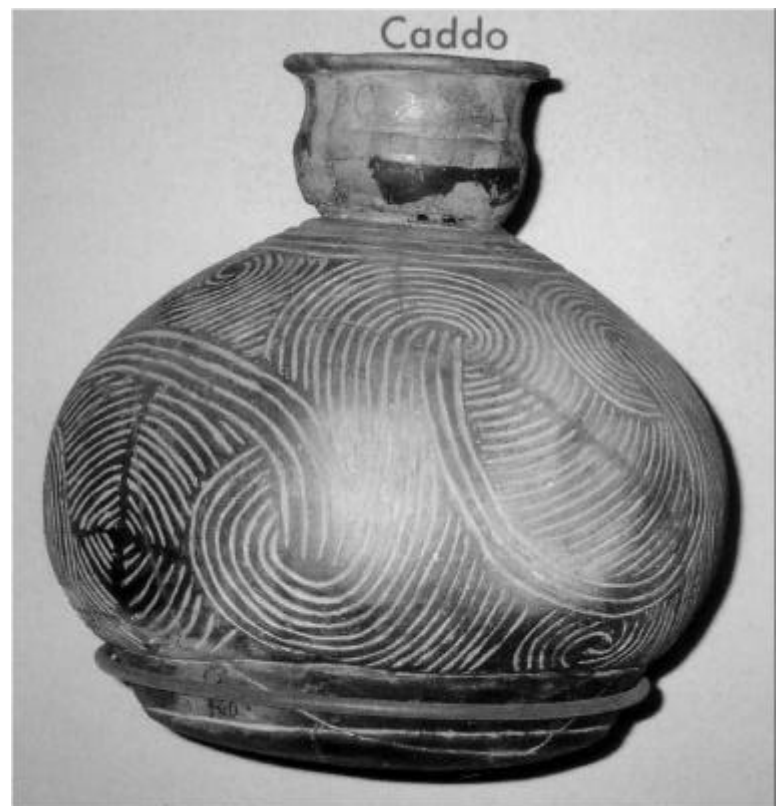
CADDO VESSELS IN THE C. C. JONES, JR. COLLECTION

VESSEL: 2-866 (on display in the Eastern Woodlands exhibit at the AMNH)

FORM: Bottle with a short spool neck, a flaring lip, and a rounded base (Figure 1)

DECORATION: trailed, interlocking continuous scrolls repeated several times around the vessel body (probably three times, but we were unable to physically inspect the vessel because it is on exhibit). There are also three horizontal trailed lines encircling the base and below the bottle neck. There may be traces of red pigment in the trailed lines.

TYPE: Keno Trailed, *var. Glendora*





VESSEL: 2-867
NON-PLASTICS: probably shell-tempered
VESSEL FORM: Bottle with a short spool neck and a flat base
HEIGHT: 7.3 cm
ORIFICE DIAMETER: 3.0 cm at the rim, and 8.9 cm along the vessel body
DIAMETER AT BOTTOM OF RIM OR NECK: 3.15 cm
BASE DIAMETER: 5.26 cm
DECORATION: trailed, continuous scrolls repeated three times around the vessel body; there are also three horizontal trailed lines encircling the base and below the bottle neck (Figure 2).
TYPE: Keno Trailed, *var. Glendora*
 Figure 2. Keno Trailed, *var. Glendora* bottle (2-867).

VESSEL: 2-868

NON-PLASTICS: none apparent

VESSEL FORM: Bottle with a spool neck and a flat disk base

WALL THICKNESS: 3.8 min on the vessel body

HEIGHT: Indeterminate

ORIFICE DIAMETER: 12.3 cm on the vessel body

DIAMETER AT BOTTOM OF RIM OR NECK: 4.29 cm

DECORATION: trailed-punctated; interlocking trailed scrolls separated by zoned scroll dividers filled with small circular punctations (Figure 3a-b) The motif is repeated four times around the vessel.

There are also three horizontal trailed lines above the base and below the bottle neck.

TYPE: Unidentified; however, the interlocking scroll motif resembles the scroll motifs executed with engraved lines on Hodges Engraved vessels, except that the decoration is executed with trailed and circular punctated elements instead of engraved lines and crosshatched scroll dividers or panels.

Figure 3. Trailed-punctated bottle (2-868): a, body and partial bottle neck; b, lower body and base.



Perttula (continued)

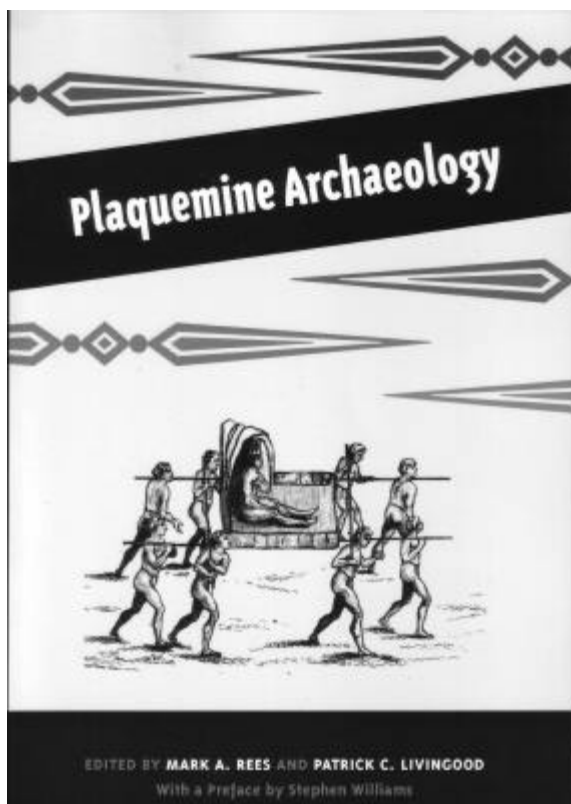
DISCUSSION

There is one known late 17th century Caddo site present on the Red River across from Shreveport -called the Beene Plantation site (16BO19) in Bossier Parish, Louisiana-that has the same kinds of decorated vessel sherds as are represented in the three vessels at the AMNH (see *Jeff Girard's article in this issue*). The site is adjacent to a relict channel of the Red River, on the river's east bank near Bossier City, Louisiana (Gulf South Research Institute 1975:49). Clarence H. Webb, a well-known avocational archeologist, had reported the site back in the 1940s, and, as we mentioned above, commented on the similarity of the vessels found there to two historic Caddo sites in the Natchitoches, Louisiana area (cf. Walker 1936; Webb 1945). Harris and Harris (1980:225) also have noted that a Natchitoches Engraved vessel (made between ca. A.D. 1680-1800) has been found at the site. In the 1970s, the Beene Plantation site was revisited, and ceramic pottery sherds were collected (Gulf South Research Institute 1975:49), including several that had shell-tempering; the use of shell temper in pottery vessels by the Caddo in this area occurred in the 17th and early 18th centuries. All the available evidence-both archeological and historical -points to the fact that this may be the site with the "ancient burial ground" mentioned so long ago by Jones (1873).

There is little doubt that three vessels were recovered from a late 17th to early 18th century Caddo burial in northwestern Louisiana. It is now also believed that they are associated with fragments of a human skull (accession no. 1869-90-81, catalog no. 21390) that were repatriated to the Caddo Nation of Oklahoma by the AMNH on June 4, 2003 (Gonzalez et al. 2005:1-2). These remains were found "in the vicinity of Shreveport, possibly Caddo Parish or Bossier Parish, Louisiana" (AMNH Letter of Transmittal, June 4, 2003 and *Federal Register*, Vol. 66, No. 35, p. 11043, February 21, 2001). These human remains were acquired by purchase or gift by the AMNH in 1877 from Charles Jones, Jr., the same donor that provided the three Caddo vessels that remain in the AMNH collections that came from "in the vicinity of Shreveport." Documenting the three vessels brings this project full circle, and now it is possible reunite the vessels with the human remains temporarily stored in Binger, Oklahoma, at the Caddo Nation's tribal complex.

REFERENCES CITED

- Jones, C. C., Jr.
1873 *Antiquities of the Southern Indians: Particularly of the Georgia Tribes*. D. Appleton & Co., New York.
- Gonzalez, B., R. Cast, T. K. Perttula, and B. Nelson
2005 *A Rediscovering of Caddo Heritage: The W. T. Scott Collection at the American Museum of Natural History and Other Caddo Collections from Arkansas and Louisiana*. Historic Preservation Program, Caddo Nation of Oklahoma.
- Gulf South Research Institute
1975 *Red River Waterway, Louisiana, Texas, Arkansas, and Oklahoma: Mississippi River to Shreveport, Louisiana and Shreveport, Louisiana to Daingerfield, Texas*. Environmental Analysis, Design Memorandum No. 15. Gulf South Research Institute, Baton Rouge, Louisiana
- Harris, R. K. and I. M. Harris
1980 Distribution of Natchitoches Engraved Ceramics. *Louisiana Archaeology* 6:223230
- Neuman, R. W.
1984 *An Introduction to Louisiana Archaeology*. Louisiana State University Press, Baton Rouge.
- Stoltman, J. B.
2004 History of Archeological Research. In *Handbook of North American Indians, Volume 14, Southeast*, edited by R. D. Fogelson, pp. 14-30. Smithsonian Institution, Washington, D.C.
- Walker, W. M.
1936 *A Caddo Burial Site at Natchitoches, Louisiana*. Miscellaneous Collections. Bureau of American Ethnology, Smithsonian Institution, Washington, D.C.
- Webb, C. H.
1945 A Second Historic Caddo Site at Natchitoches, Louisiana. *Bulletin of the Texas Archeological and Paleontological Society* 16:52-83.



From the back cover:

Plaquemine, Louisiana, about 10 miles south of Baton Rouge on the banks of the Miss. River, seems an unassuming southern community for which to designate an entire culture. Archaeological research conducted in the region between 138 and 1941, however, revealed distinctive cultural materials that provided the basis for distinguishing a unique and cultural manifestation in the Lower Mississippi Valley. *Plaquemine Archaeology* brings together eleven leading scholars who map a clearer understanding of Plaquemine culture and its relationship to other Native American societies. The authors provide a thorough, focused review of previous research, recent revelations, and directions for future research. They present pertinent new data on cultural variability and connections in the Lower Mississippi Valley and interpret the implication for similar cultures and cultural relationships. This volume incontrovertibly demonstrates the accomplishments and importance of Plaquemine peoples in the long history of native North America.

Contributors: Virgil Roy Beasley III, Ian W. Brown, Marvin D. Jeter, Tristram R. Kidder, Patrick C. Livingood, Mark A. Rees, Lori Roe, Malcolm K. Shuman, Richard A. Weinstein, Douglas C. Wells, Stephen Williams.

Edited by Mark A. Rees, Assistant Professor of Anthropology at the University of Louisiana at Lafayette and Patrick C. Livingood, Assistant Professor of Anthropology at the University of Oklahoma. Preface by Stephen Williams. Published by University of Alabama Press, Tuscaloosa, AL 35487-0380 - www.uapress.ua.edu

Remote Sensing in Archaeology: An Explicitly North American Perspective, edited by **Jay K. Johnson**.

Published jointly by the University of Alabama Press, The Center for Archaeological Research at the University of Mississippi, the University of Mississippi Geoinformatics Center, and NASA Earth Science Applications Directorate at the Stennis Space Center. 2006. **Reviewed by Chip McGimsey**

Remote sensing is rapidly becoming the “in” thing in field archaeology with most of the professional crowd having been exposed to the wondrous data it can produce, and fervently wishing we had the time, money and/or expertise to do “it” at our site. In addition, nearly every avocational archaeologist is also aware of remote sensing and asks about its possibilities for the site or topic of interest to them. In my own experience, I usually get at least one call a year from someone who wants to use remote sensing to find a forgotten cemetery. This book will help many of us figure out what can and can’t be done with these techniques.

Jay Johnston, the editor, notes in an introduction that the book has three goals. First, although there are a number of available publications that address remote sensing techniques, the technology and computer processing capability is advancing so rapidly that manuals become quickly outdated. Second, nearly all of the available books are written by European archaeologists and focus on their kinds of sites; and third, there is a great deal of uncertainty among us non-specialists as to when and where a specific technique can be employed. A primary goal of this book is to provide an overview of the various remote sensing options to guide folks in the selection and application of the appropriate technique. Not every magical instrument will produce a magical map for every site.

This book is written by professionals for the professional audience, however the basic information of each chapter is accessible to most folks. The heart of the book is a set of chapters that each tackles a specific remote sensing approach. These include airborne photography and spectral imaging, conductivity, resistivity, ground-penetrating radar, magnetic susceptibility and magnetometry. These typically address basic principles of the technique, equipment selection, appropriate ground conditions, data collection and processing, and factors to consider in deciding whether to use it. Each of these chapters is accompanied by a considerable number of photographs and images illustrating what you can get with that technique’s application.

The volume also includes chapters that address ground truthing the results of remote sensing, the power of multiple method surveys, a cost-benefit examination of the relative cost of remote sensing and, perhaps most useful for most of us, a comparative guide to the various magical methods. This book is not intended for light reading before bedtime, but the chapters are well written and make their point clearly and concisely. It is strongly recommended for anyone contemplating using remote sensing for any archaeological project. It will give you a much better idea of what each technique can do, as well as what it cannot.

Tew Site (16BE78) Photographs and Additional Information

James A. Green, Jr.

Photographs and additional information have been found on the Tew Site (16BE78) (Figure 1), the subject of my recent presentation at the LAS Annual Meeting in Leesville, Louisiana. For those of you who were not present at this year's meeting, a short synopsis of the Tew Site is in order.

In late 1978 and early 1979 John Guy, Sr., Robert Guy, Michael Tew, and I excavated eight 1 x 1 meter units at a site in Beauregard Parish near DeRidder that was being destroyed by relic hunters. The site is located on a small knoll overlooking a tributary of Bundick Creek. Cultural materials recovered from the site indicated that it had been occupied during the late Paleo-Indian/Early Archaic, Middle Archaic, and Late Archaic through Late Woodland periods. Projectile points recovered from the site included San Patrice *var. Hope*, San Patrice *var. St. Johns*, San Patrice *var. Keithville*, Kirk Corner-Notched, Evans, an early Sinner variant, Calcasieu *var. I*, Calcasieu *var. II*, Marshall, Marcos, Ellis, Yarbrough, Williams, Kent, Pontchartrain, Palmillas, Alba, Hayes, Friley, and Catahoula. Other lithic tools included adzes, preforms, blanks, and drills. Prehistoric ceramics recovered from the site included Marksville and Troyville-Coles Creek types (discussed below). San Patrice points at the Tew Site (16BE78) occurred at seven times the density per unit than the per unit density from the John Pearce Site (16CD56) that Webb, Shiner, and Roberts (1971) excavated in Caddo Parish.

Of interest was the fact that most of the San Patrice and Late Archaic through Middle Woodland points from the site exhibited offset hafting elements and asymmetrical blades, suggesting that a specialized activity was being conducted at the site. An archaeobotanist proposed that palmetto, a plant that grows profusely only in this area and known to have been used for thatching and textiles, was being collected from the floodplain.

Cultural materials recovered from the Tew Site were taken to Texas for processing and analysis by an archaeologist who was doing work at Fort Polk at the time. Most of the projectile points and a few other bifaces were returned to John Guy, Sr. after almost five years, but none of the excavation notes, ceramics, flakes, shatter, cores, special samples, etc. The hunt is still on for the missing material.

The positive feedback from LAS members on my Tew Site (16BE78) presentation at the LAS Annual Meeting in Leesville was very encouraging. Many people expressed their concerns and regrets that cultural site

materials and associated paperwork could be lost by people charged with the analysis. Additionally, I heard several people comment on the density of the San Patrice component and the hope that additional work will someday be performed at the site.

In response to the interest generated by my presentation, I have further news and information. First, plans are underway to get permission from the current landowner to allow Chip McGimsey, John Guy, Jr., and me, along with other volunteers, to conduct more work at the site. Second, I have found some of the photographs from the site excavation. Third, someone from the original crew photographed a few of the larger sherds and bifacial lithics recovered from the site.

Relic hunters had been very active at the site by the time we arrived (Figures 2). I believe that most of the holes were ca. 60 centimeters deep. Areas away from the relic hunters' diggings were heavily vegetated and greatly affected the placement of units. Even then, roots made it very difficult to keep the unit walls straight.

While Robert Guy (Figure 3) worked diligently excavating units at the site, John Guy, Sr. put himself in charge of the camera and survey transit. Those of us who had the chance to work with John Guy, Sr., know how hard it was to get a photograph of him actually working.

In my presentation I questioned several times whether the graduate student writing her dissertation on the Tew Site had returned all of the projectile points. One photograph was found that shows several of the projectile points recovered from the site. Figure 4 is a rough mosaic showing the projectile points not in the returned material. Top row from left; possible Palmillas, Calcasieu *var. II*, possible Calcasieu *var. II*, and Yarbrough. Middle row from left; Marshall, possible Delhi, and San Patrice *var. St. Johns*. Bottom row from left; Evans (3) and Ellis. It is probable that there were other projectile points recovered that we have no record of.

The one photograph that I found confirms that the site contains Marksville and Coles Creek ceramics. I was able to extract and enhance the sherds from the photograph (Figures 5 and 6). Although I assigned varieties to some of the sherds, without physically inspecting them, those designations should be viewed as tentative at best. Figure 5 shows the Marksville period sherds. Top row from left; Churupa Punctated (2) and possible Marksville Incised. Bottom row from left; Marksville Incised (2) and Marksville Incised rim. Figure 6 shows the Coles Creek period sherds. Top row from left; Chevalier Stamped *var. Chevalier* rim and French Fork Incised *var. Laborde*. Bottom row from left; Coles Creek *var. Hardy* and Coles Creek *var. Coles Creek*.

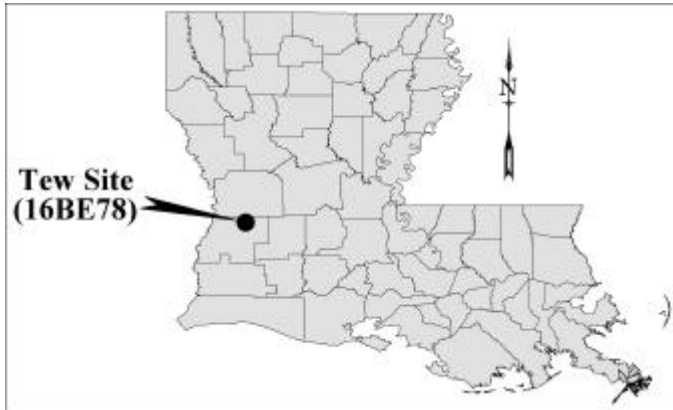


Figure 1: Location map of the Tew Site (16BE78) in Bearegard Parish.



Figure 2. Units 7 and 8 (background) located next to relic hunter holes

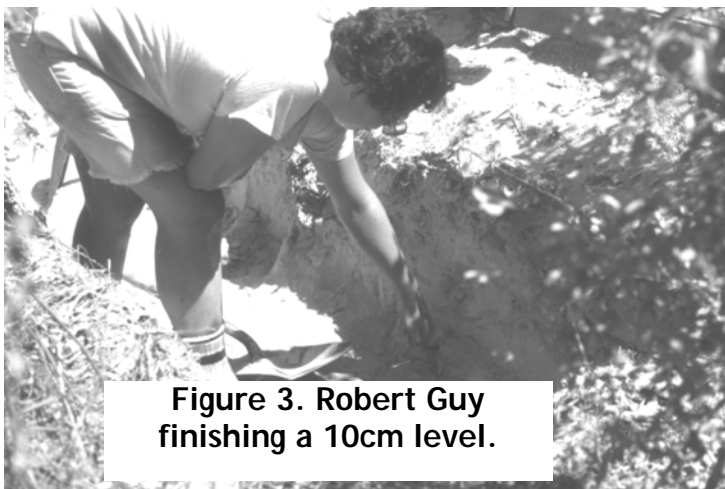


Figure 3. Robert Guy finishing a 10cm level.

Figure 4. Additional projectile points from the Tew Site (16BE78).

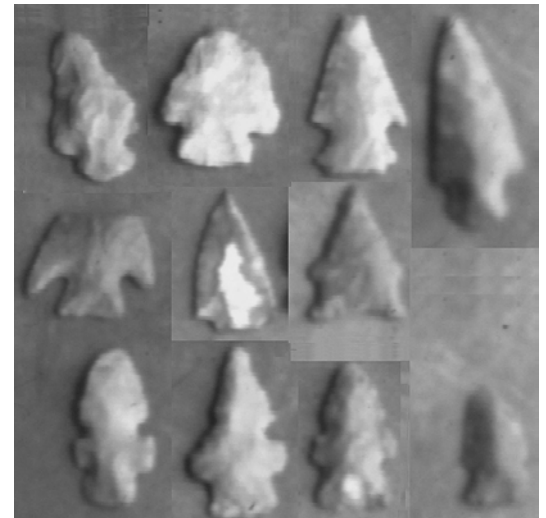


Figure 5. Marksville period sherds recovered from the Tew Site (16BE78)

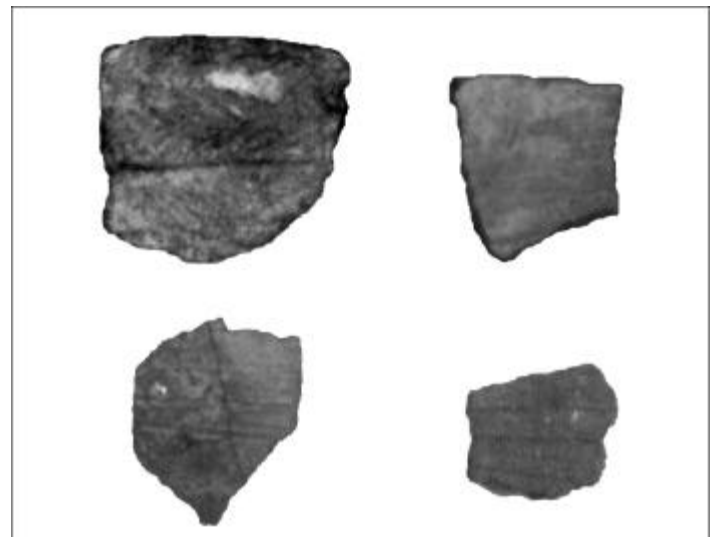
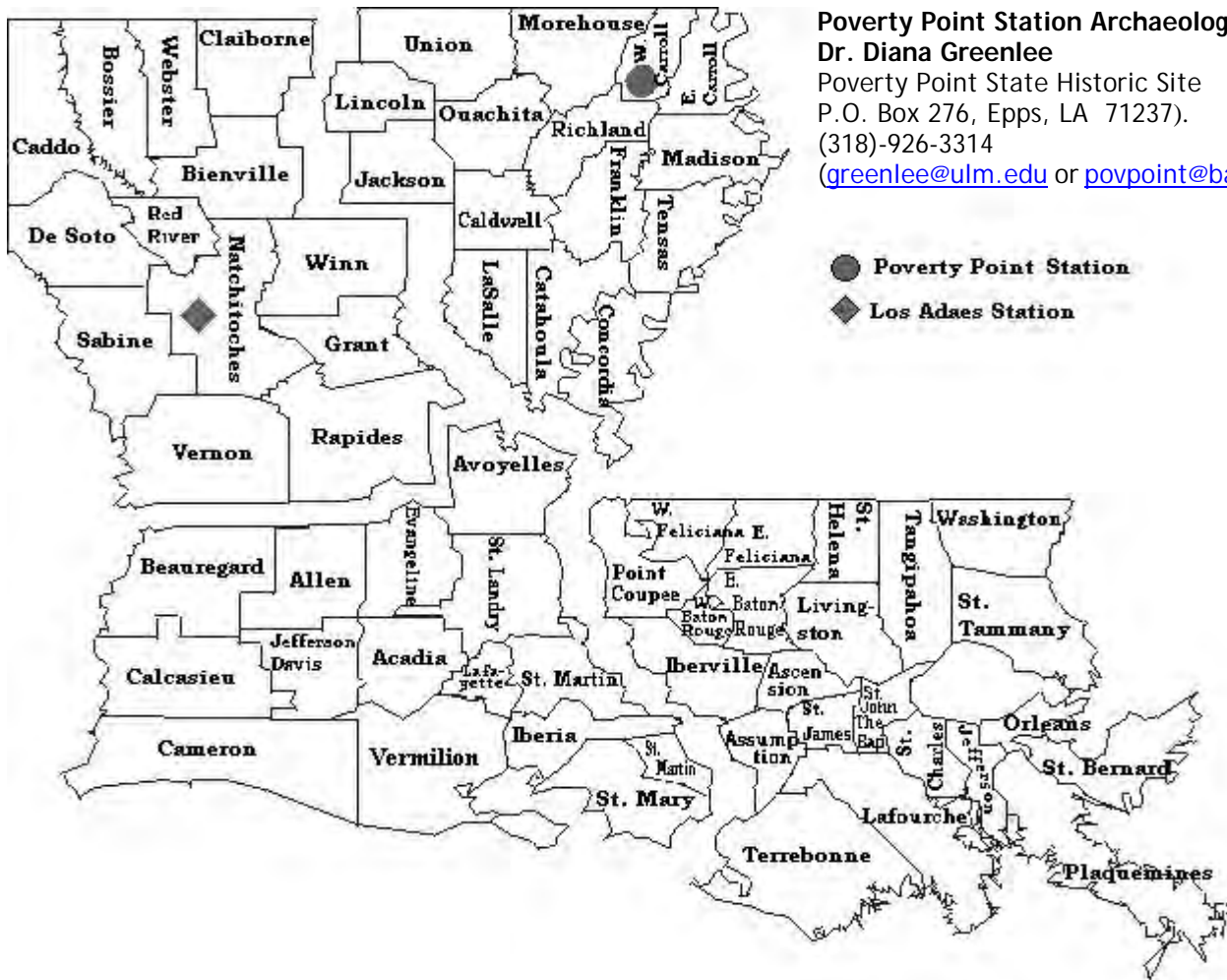


Figure 6: Coles Creek period sherds recovered from the Tew Site (16BE78).

Regional Archaeology News



Poverty Point Station Archaeologist Dr. Diana Greenlee

Poverty Point State Historic Site

P.O. Box 276, Epps, LA 71237).

(318)-926-3314

(greenlee@ulm.edu or povpoint@bayou.com),

● Poverty Point Station

◆ Los Adaes Station

Northwest Region

Jeff Girard

Regional Archaeology Program

Department of Social Sciences

Northwestern State University

Natchitoches, LA 71497

(318) 357-5471 girardj@nsula.edu

Southwest Region

Dr. Charles R. "Chip" McGimsey

Regional Archaeology Program

Department of Sociology and

Anthropology

University of Louisiana - Lafayette

PO Box 40198

Lafayette, LA 70504-0198

(337) 482-5198

mcgimsey@louisiana.edu

Northeast Region

Dr. Joe Saunders

Regional Archaeology Program

Department of Geosciences

University of Louisiana - Monroe

Monroe, LA 71209

(318) 342-1899

saunders@ulm.edu

Southeast Region

Rob Mann

Regional Archaeology Program

Museum of Natural Science

Louisiana State University

Baton Rouge, LA 70803

(225) 578-6739

rmann1@lsu.edu

Current Efforts to Get Poverty Point on the World Heritage Site List

By Diana Greenlee

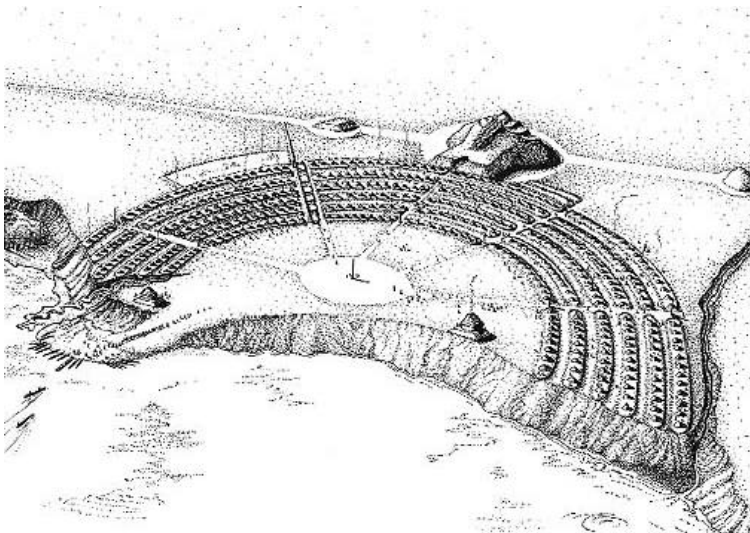
Station Archaeologist at Poverty Point State Historic Site

I have been working on an application to nominate the Poverty Point site for inclusion on the United States World Heritage Tentative List. The U.S. Tentative List is an inventory of cultural and natural properties that are deemed by the National Park Service Office of International Affairs to be the best candidates for the World Heritage List. Beginning in 2009 and for the next decade, U.S. nominations to the World Heritage List will be drawn from the new Tentative List.

Sites on the World Heritage List are recognized internationally through the United Nations Educational, Scientific and Cultural Organization (UNESCO) as the most outstanding examples of the world's cultural and natural heritage. To be on the World Heritage List, a site must be of outstanding universal value, defined by UNESCO in the *Operational Guidelines for Implementation of the World Heritage Convention* (p. 14) as "... cultural and/or natural significance which is so exceptional as to transcend national boundaries and to be of common importance for present and future generations of all humanity. As such, the permanent protection of this heritage is of the highest importance to the international community as a whole." In addition to being of outstanding universal value, a nominated site must meet at least one of ten criteria. Poverty Point is proposed for the Tentative List under criterion *iii*: bears a unique or at least exceptional testimony to a cultural tradition or to a civilization which is living or which has disappeared.

The Tentative List application, due 1 April 2007, is just the first step in a lengthy process toward inscription on the World Heritage List. All applications will be evaluated by a committee of the National Park Service. They may recommend inclusion on the list, request amendments to the application, or recommend against inclusion. After additional reviews, the official U.S. Tentative List will be submitted to the World Heritage Centre by February, 2008. The U.S. may then begin drawing from it for its nominations, no more than two per year and one must be a natural heritage site. The nomination requires a formal proposal, which is subject to further review prior to submission to the World Heritage Committee. Once submitted, advisory bodies review thoroughly each nomination and conduct on-site inspections. Finally, the World Heritage Committee decides whether or not to include the property on the World Heritage List.

Of the 830 currently recognized World Heritage Sites, 20 are located in the United States. Eight of the U.S. World Heritage Sites are cultural sites, and only three of those (Cahokia, Chaco Canyon, and Mesa Verde) are prehistoric archaeological sites. We (LA Division of Archaeology and Office of State Parks) believe that the Poverty Point State Historic Site not only merits inclusion on the U.S. Tentative List, but that it should be on the World Heritage List as well. If you have any questions about our efforts, contact Diana Greenlee at 318-926-3314; greenlee@ulm.edu; or c/o Poverty Point State Historic Site, P.O. Box 276, Epps, LA 71237.



Artists reconstruction of the central ridged enclosure at the Poverty Point site as it may have appeared in 1350 B.C.

From - *Poverty Point: A Terminal Archaic Culture of the Lower Mississippi Valley* Second Edition May 1996

Jon L. Gibson (emeritus)

University of Southwestern Louisiana

Printed by: Department of Culture, Recreation and Tourism and Louisiana Archaeological Survey and Antiquities Commission.

Search for the Beene Plantation Site (16B019)

By Jeffrey S. Girard

Regional Archaeology Program

Northwestern State University of Louisiana

When ascending the Red River in search of the Kadohadacho villages in 1690, Henri de Tonti encountered a Caddo group called the Natches about 30 leagues north of Natchitoches. Approximately 10 leagues upstream, he found the Yatasi, and noted that the Nadas and Choye lived nearby. A decade later, Jean Baptiste Le Moyne, Sieur de Bienville took a similar journey and arrived at the village of the Nakasas on the 16th of April. Their party continued north and Bienville spent several days in the Yatasi village looking for pirogues and corn for a journey to the Kadohadacho villages. He reported that he went inside forty different huts and traded axes, glass beads, and other trifles for the needed supplies (McWilliams 1981).

David Kelley reconstructed Bienville's route and concluded that a portion of the Nakasas village is represented by the McLelland and Joe Clark sites in southern Bossier Parish (Kelley 1994). Bienville probably encountered the Yatasis along the northern periphery of modern Shreveport-Bossier City. The best evidence of the possible Yatasi village comes from a site known as Beene Plantation located immediately east of the river along an abandoned channel segment. The site was identified by Clarence Webb in the early 1940s. Unfortunately, due to extensive changes in the cultural landscape since that time, it now is difficult to locate precisely where he observed and collected artifacts.

I attempted to find the site after Bobby Gonzalez, Robert Cast, Tim Perttula, and Bo Nelson identified several Caddo ceramic vessels at the American Museum of Natural History in New York in the fall of 2004. Three vessels obtained by the museum between 1869 and 1890 from Charles Colcock Jones, Jr., reportedly were found "in the vicinity of Shreveport, Louisiana" (see *Perttula's article this issue*; Gonzalez et al. 2005). The represented types appear to date to the 17th century or later, and therefore might relate to the historic Yatasi village visited by Tonti and Bienville.

In the fall of 2005, LAS members Louis Baker, David Jeane, and I found two sparse scatters of Caddo sherds and chipped stone in an area that seemed to correspond to that described in Webb's field notes. Auger tests revealed stratified alluvium, but no buried surfaces with detectable soil horizons. Mottling of the deposits suggested disturbances to at least 75 cm below the surface. We concluded that we were on

the southern margin of the site, and that the primary area collected by Webb lay in a locale that now is used to stockpile and load sand and gravel on railroad cars (Figure 1). The degree of subsurface disturbance in that area is not known, but it is likely that most of the site has been severely impacted, if not destroyed. Despite our disappointment regarding the condition of the site, analysis of Webb's collection of slightly over 1000 artifacts provided interesting information. The sherd collection is dominated by the types Natchitoches Engraved, Foster Trilled Incised, Emory Punctated Incised, Belcher Ridged, and Karnack Brushed Incised (Figure 2). This range of types, together with the abundance of shell temper, indicates that the site post-dated the well-known Belcher Site (Webb 1959), and probably was occupied in the late 17th to early 18th centuries. Only a small number of stone artifacts were collected by Webb. The only complete arrow point is of the Nodena type (Figure 2). Unfortunately, no 18th century French trade goods are present in the collection.

Given the range of pottery present, along with Kelley's historic reconstruction, the Beene Plantation site likely represents a portion of the Yatasi village visited by Bienville in 1700 (and perhaps by Tonti as well). The site also is the possible place of origin for the complete vessels in the American Museum of Natural History. Although most of the site has been destroyed or is inaccessible, Webb's Beene Plantation collection provides an important link for studying protohistoric to historic changes in Caddo material culture.

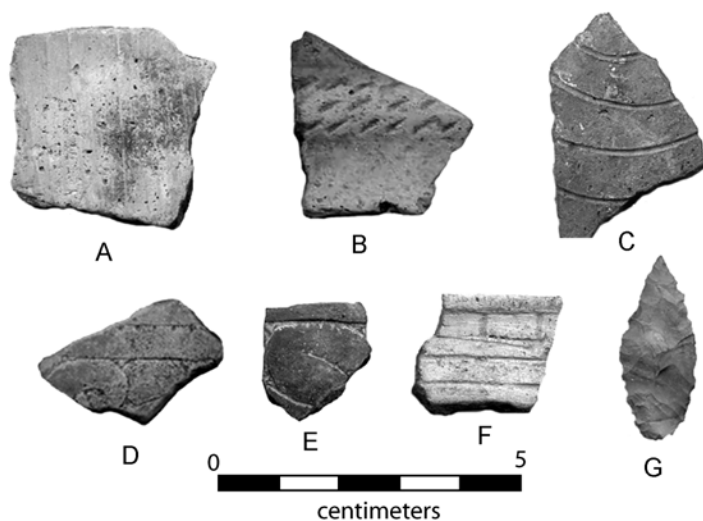
References

- Gonzalez, Bobby, Robert Cast, Timothy K. Perttula, and Bo Nelson
2005 *A Rediscovering of Caddo Heritage, The W.T. Scott Collection at the American Museum of Natural History and Other Caddo Collections from Arkansas and Louisiana*. Caddo Nation of Oklahoma, Historic Preservation Program, Binger, Oklahoma.
- Kelley, David
1994 *The McLelland and Joe Clark Sites: Protohistoric-Historic Caddoan Farmsteads in Southern Bossier Parish, Louisiana*. Report submitted to the U.S. Army Corps of Engineers, Vicksburg District. Coastal Environments Inc., Bator Rouge.
- McWilliams, Richebourg G.
1981 *Bienville's Gulf Journals*. University of Alabama Press, University, Alabama.
- Webb, Clarence H.
1959 *The Belcher Mound: A Stratified Caddoan Site in Caddo Parish, Louisiana*. Society for American Archaeology Memoir 16, Salt Lake City.



Figure 1. Looking northeast across existing portion of the site. Gravel and sand stockpiles are visible in the background.

**Figure 2. Selected artifacts:
A Belcher Ridged, B Emory Punctated Incised, C Foster Trailed Incised, D-F Natchitoches Engraved, G Nodena point**



Continuing Work at the Hedgepeth Mounds (16LI17)

By Joe Saunders

Regional Archaeology Program

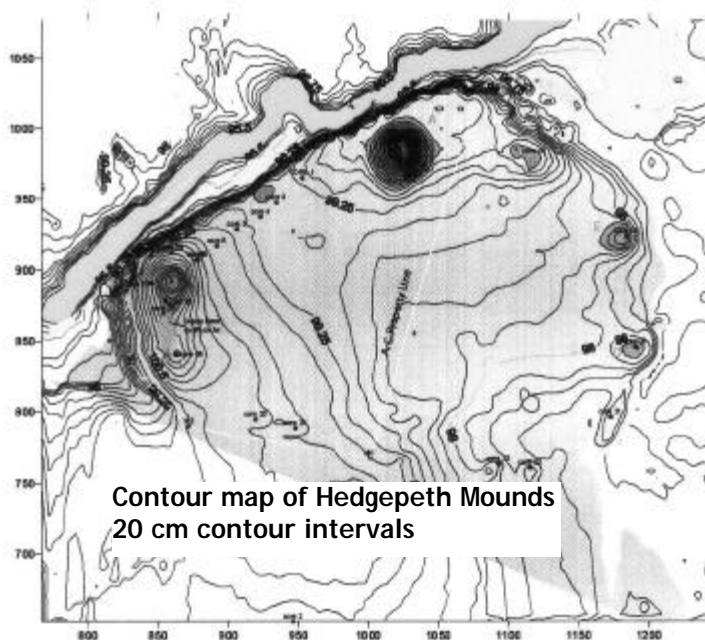
University of Louisiana at Monroe

Work completed at Hedgepeth Mounds (16LI17) identified four additional mounds at the site (see map). None are substantial in size. Mounds D and F were probed in the first field season and were considered to be natural rises. A third, Mound C, was identified, but not verified, two years ago. The fourth and largest, Mound E, was missed. Coring detected a two stage mound with a very rich midden in Mound E.

Twenty nine soil cores examined on site failed, as have earlier attempts, to locate midden deposits associated with the mounds. This strategy failed, as have other attempts. To date the existence of cultural deposits at the site remains a mystery. The aggrading environment may be responsible for the low number of artifacts.

Core 29, between Mounds B and C, hit a feature of burnt clay ca. 70 cm below surface. Three 2m interval soil probe transects consistently identified what is presumed to be a buried A horizon between 90 and 115 cm below surface. Five auger excavations on the C-29 transect failed to encounter burnt clay. Thus, the C-29 feature is very localized. Excavation of this feature is under consideration.

Dr. John Norris, M.D. mapped the site and Mr. Thurman Allen described the cores. Mrs. Frank Thomas and the Archaeological Conservancy provided permission for the work conducted on their respective properties.



The Allen Darby Collection from 16IB101

Chip McGimsey

Regional Archaeology Program

University of Louisiana at Lafayette

Allen Darby lived in New Iberia and had a life-long interest in archaeology. He collected almost exclusively from two sites, 16IB63 and 16IB101, around New Iberia. His collection from 16IB63 was described in an earlier Newsletter article (McGimsey 2007). After his death in the mid-1990s, his family maintained his collections and recently allowed the author to examine them.

16IB101, the Darby or Nelson Canal site, is located on the Prairie Terrace overlooking the Mississippi alluvial valley and the modern Bayou Teche. At this location, the Terrace is only 1.5-2.0 m higher than the alluvial valley and it disappears beneath younger sediments several miles to the southeast (Saucier 1994). This site is thus one of the southernmost landforms in this region that is elevated above Holocene flood events and could contain an extensive cultural record. The site lies on the west bank of Nelson Canal that presently flows along the base of the Prairie Terrace. Today, the Canal is heavily canalized and 5-6 m in width. The site occupies a slight rise on the Terrace and extends approximately 100 m along the terrace edge. The field has been cultivated for many years and is a cane field today. Although no test excavations have been undertaken at the site, it is very likely that few, if any, undisturbed deposits remain at the site. Test excavations at 16IB63 in an identical topographic setting indicated the entire site lay within the modern plow zone (McGimsey 2007). The original site form, filed by Lanier Simmons, notes the "base of a small earth mound" is present; family members who collected the site with their father do not have any recollection of a mound at the site.

The Darby collection consists of two parts. The first part is a large glass board with over 200 artifacts from the site glued to it. This exhibit was assembled by Mr. Darby many years ago, perhaps with the assistance of Lanier Simmons of Avery Island. The artifacts, mostly points, are grouped by type. The second part of the collection is a large bag of material loaned to Dr. Jon Gibson at the University of Louisiana at Lafayette many years ago. This bag was tabulated by the author and returned to the family at the conclusion of this project.

The Darby collection from 16IB101 is extensive (Table 1). It appears that Mr. Darby picked up every rock and possible artifact that he saw during his many visits to the site. His diligence is reflected in the small size of many items; many flakes are less than 1 cm long. Consequently, this collection should provide a good approximation of the frequency of items and types

present at the site. The collection is dominated by lithic materials. It is very surprising that only 2 ceramic sherds were collected. Given that an abundance of Gary and Kent points, along with a few arrow points were found at the site, a greater density of sherds would be anticipated. Either this site served only as a small, occasional hunting camp during the ceramic period, or the continual plowing had a very detrimental affect upon the ceramic artifacts.

The site exhibits occupations from at least the Middle Archaic through the late prehistoric. One item is tentatively identified as an Early Archaic lanceolate with basal thinning (Figure 1b), although it lacks the characteristic parallel flaking and ground base. The Middle Archaic occupations are relatively sparse with only the Bulverde and Evans points (Figure 2) to mark them. The stone beads (Figure 3) may also date to this period, leading to the curious question as to why there are as many beads as points remaining from these occupations. But it is after 5,000 BP that the occupation intensity really increases. There is a great diversity of point types from the 5,000 – 3,000 interval, with Kent and Gary points dominating after that time. Virtually all of the indeterminate points and point fragments date to this same 5,000 – 1,500 BP interval. The post-1,500 BP period is evidenced by six arrow points, indicating only sporadic occupation after that date.

One large bifacial blade is present in the collection (Figure 1a). It is tentatively identified as an Oversize Cache Blade (following McGahey 2000:117) for lack of anything better to call it. If correct, it would also date to the Middle Archaic period and along with the beads, may suggest that a burial was once present at the site.

The beads (Figure 3) include eight tubular forms and one life-saver shaped example (Figure 3i). The tubular beads range in length between 21 and 41 mm, with widths varying between 10 and 14 mm; the drilled holes vary between 2.8 and 3.8 mm in diameter. Six are made of red jasper (Figure 3a, c, d, e, g, i), the remaining three are made of an unidentified very fine-grained stone. Several of the red jasper beads have been only minimally rounded and exhibit broad facets on multiple surfaces (Figure 3a, e, g).

The Darby collections from 16IB63 and 16IB101 are very similar and offer nearly identical views of the cultural history of the Prairie Terrace around New Iberia. Both sites are situated on the edge of the terrace overlooking the Mississippi alluvial valley and the modern Bayou Teche. Each has only minimal Early and Middle Archaic occupations, with occupational frequency increasing dramatically after 5,000 BP. The late Middle Archaic and Late Archaic periods represent the height of occupation frequency at both sites, and frequency drops off significantly as the bow and arrow

Table 1. Inventory of materials in the Darby collection from 16IB101

Description	Count
Flakes	1184 (24 novaculite)
Angular fragments	217 (1 novaculite)
Bifaces and biface fragments	387 (3 novaculite, 1 indeterminate chert)
Drills	9
Adzes (polish on the bits)	2
Cores and core/hammerstones	3
Retouched pieces	15 (1 novaculite)
Early Archaic lanceolate	1
Archaic side-notched point reworked into scraper	1
Bulverde points	2
Evans points	7
Marcos points	21 (1 indeterminate chert)
Yarbrough points	8
Williams points	4
Birds Creek points	1
Ellis points	1
Marshall points	2
Little Bear Creek points	3
Macon points	4
Late Archaic barbed points	6
Kent points	28
Gary points	19 (5 novaculite and 1 crystal quartz)
Gary/Kent points	1
Pontchartrain points	2
Late Archaic stemmed points	12 (2 novaculite)
Indeterminate dart points and fragments	72 (1 indeterminate chert)
Alba point	1
Indeterminate arrow points	5
Oversize cache blade (?)	1
Baytown Plain rim with lip notches	1
Marksville Stamped, var. <i>Manny</i>	1
Stone beads	9
Historic Kaolin pipe stems	2

**Figure 1. Oversize Cache Blade (a) and Early Archaic lanceolate (b) from 16IB101.****Figure 2. Evans points from 16IB101.**



Figure 3. Stone beads from 16IB101.

McGimsey (Continued)

period arrives. At least part of this pattern may reflect the development of the alluvial valley. The main channel of the Mississippi River would have been at or very near to the Terrace edge during the Middle Archaic period, and it seems likely that an extensive backwater area would have existed in this area for some time after the river shifted eastward. Sites situated on high ground above seasonal floods immediately adjacent to these backwater areas were preferentially selected for their ready access to a wide diversity of resources. As the river channels slowly in-filled and the Bayou Teche system developed, occupation may have shifted away from the Terrace onto natural levees in the alluvial valley itself.

Perhaps the most important lesson from the Darby collections is the value of multiple visits to a site. Although each ultimately produced hundreds of points, it took tens of visits to each site to accumulate each collection. One is also left to wonder how many sites contain beads that are simply missed or remain buried at the time they are visited. Certainly, the 13 beads from these two sites represent the largest assemblage of beads that I know of from southern Louisiana, and there is no obvious reason why these two sites should be unique. The Darby collections raise the issue of what the actual occupational history of the many sites recorded along the Prairie Terrace margin might be,

given that most of them have been visited only once or twice. Sites like 16IB63 and 19IB101 give us a glimpse of what the actual occupational history of this region may have been, a view possible only because of the dedicated effort of Mr. Allen Darby and his family.

References Cited

McGahey, Samuel O.

2000 *Mississippi Projectile Point Guide*. Mississippi Department of Archives and History Archaeological Report 31. Jackson.

McGimsey, Chip

2007 The Allen Darby Collection from 16IB63. *Louisiana Archaeological Society Newsletter* 34(3):15-18.

Saucier, Roger

1994 *Geomorphology and Quaternary Geologic History of the Lower Mississippi Valley*. U.S. Army Engineer Waterways Experiment Station, Vicksburg, MS

Father Odilo Alt and the Bedico Creek Site (16TA17): A Little Know Episode in Louisiana Archaeology

Rob Mann

Regional Archaeology Program

Louisiana State University

The Bedico Creek site (16TA17) is a shell midden on the west bank of Bedico Creek in Tangipahoa Parish. Chip McGimsey and I visited the site in 2003 and I will describe our investigation of the site below. The site was first professionally recorded in 1957 by Roger Saucier and Sherwood Gagliano, who described it as a single *rangia* shell midden of unknown cultural affiliation (Saunders 1993:20). The site was described by Ken Drude in 1968 as two discrete Coles Creek period shell middens (Saunders 1993:20). The site was mentioned by Al Saltus (1988) in a report about submerged archaeological sites on the waterways along the north shore of Lake Pontchartrain. The site was visited and updated in 1993 by Rebecca Saunders (1993:20-21), who was the Southeast Regional Archaeologist at the time. Saunders (1993:20) described the site as "a single large oval to semi-circular *rangia* deposit, with a large swath of shell removed from the central area of the site." These professional investigations, however, do not tell the full story of the archaeology of the Bedico Creek site.

In February 2003 a visitor to an artifact identification program that Chip McGimsey, Butch Lee and I were conducting at the Lake Pontchartrain Basin Maritime Museum in Madisonville, Louisiana described a shell midden on Bedico Creek that had been excavated in the 1930s by Father Odilo Alt, O.S.B., of the Saint Joseph Abbey near Covington, Louisiana. Intrigued, I went looking for confirmation of the story. As it happens, former Curator of Anthropology at the LSU Museum of Natural Science, Robert Neuman, was also aware of Father Alt. Neuman had contacted Father Dominic Braud at Saint Joseph's regarding Father Alt's archaeological endeavors. Father Braud, who is an avocational archaeologist, sent Neuman several photographs of Father Alt's excavations and copies of the Abbey's newsletter, the *Abbey Chronicle*, which contains reports of Father Alt's excavations at Bedico Creek. Neuman (1984:43-44) described Alt's excavations in his chapter on the beginnings of archaeology in Louisiana. Neuman (1984:43-44), though, never explicitly connects the site excavated by Father Alt to the site on Bedico Creek recorded by Saucier and Gagliano in 1957. There is, however, a handwritten note on Neuman's copy of the *Abbey Chronicle* that says "possibly 16TA17" and is initialed RWN. Based on the available information I concur with

Neuman and it appears that the site excavated by Father Alt was the Bedico Creek site (16TA17).

Though his excavations were clearly uncontrolled and he made only very general notes about where on the site he dug, Father Alt's study of the Bedico Creek site is a thorough description of what he did, what he found and what he thought it meant, which given his lack of formal training makes his report both interesting and informative. Father Alt (1934a; 1934b) reported his excavations in two small articles in the *Abbey Chronicle*. In the first article he (1934a:49) describes how finding "arrow-points on my walks along the banks of the scenic Bogue Falaya... and of other smaller creeks as well as farms in the vicinity of our Abbey" led to a "lively interest" in the early history and archaeology of southeastern Louisiana. Father Alt (1934a:49) learned of a "peculiar large heap of shells between Madisonville and Ponchatoula on the Bedico River." After asking around, Father Alt (1934a:50) learned that the "shell bank" had been purchased by the Nelson Construction Company in 1925 "for road construction purposes."

Determined to make a personal investigation, I visited the place December 17, 1933. Before me on the bank of the Bedico River about three miles from its junction with the Tangipahoa, and bordered on the east by the swamp, lay the heap of shells about which my old friend has spoken to me [Alt 1934a:50].

Father Alt found that the site had been disturbed by the shell mining. "I soon realized that it was but a part, the sad remains, of what seems to have once been a considerable shell mound" (Alt 1934a:50). The outline of the original mound, according to Father Alt (1934a:50) remained intact "with the exception of the part on the river side whence the shells had been removed" (Figure 1). The original mound was "somewhat oblong in form, being about 120 feet long and ninety feet wide" (Alt 1934a:50). Father Alt was told that the center of the shell mound originally reached a height of eight feet. He went on to describe the rest of the site, "The outer edge of the east and south portion remain, while the greater portion of the southwest corner, which was untouched by the company is over grown with palmettos" (Alt 1934a:50). Father Alt (1934a:50) saw pottery and bone scattered on the surface of the site and wondered:

Can this possibly be an ancient burial ground?...I then began to remove some of the shells in the southwest corner and at a depth of only one and one-half feet I came



Figure 1. **Bedico Creek site (16TA17) as it looked in 1933. Father Odilo Alt is standing in background.** Courtesy LSU Museum of Natural Science.

Mann (continued)

upon a human skull together with a collection of bones, which, however, crumbled when I touched them. I no longer doubted that I had at last found a genuine Indian mound. On account of lack of time and the fact that it was a Sunday, I was not in a position to do any more work that evening.

Father Alt returned to the site with a small "crew" from the Abbey eleven days later on December 28, 1933 (Alt 1934b:68). Returning to the spot where he had previously found human remains, Father Alt and crew "commenced to remove the shells, working from the center of the mound towards the outer edge of the west side." They quickly encountered pottery and Father Alt (1934b:68) noted that while most "pieces were plain," "some showed pleasing designs." These designs, he (1934b:68) further noted, were "mainly geometric figures, linear and curved." At a depth of about two feet the excavators encountered human remains, "which were in a fair state of preservation" (Alt 1934b:68). The bones, he (1934b:68) noted, "appeared to be the arm and leg bones of an adult (Figure 2). At the same level he uncovered three badly decayed skulls that could not be removed. Proceeding deeper the excavators encountered "Four more skulls, lying close

together" (Alt 1934b:68). Below these remains Father Alt (1934b:68) notes that they "came upon a bed of charcoal, ashes, odd pieces of pottery, half burnt bones and shells. On the edge of this bed was lying the greater part of a human skull which showed clear signs of having been burnt." Following out this feature, Father Alt concluded that it was approximately eight feet square. Not finding any complete burials below this feature, he shifted his attention to "an almost untouched section to the left of our starting point." Here he and his crew exposed a "perfectly preserved skull," which they were able to remove intact with the exception of the lower jaw which broke in half (Alt 1934b:69). Father Alt (1934b:69) must have had advanced knowledge of human osteology and physical anthropology for he described the skull in great detail:

The peculiar formation of this cranium, even at first sight, is very striking and reminds one of the "Flatheads" we read so much about. The skull is remarkable for the complete absence of the forehead. The frontal bone retreats directly behind the superciliary arch, forming an almost flat level. This flatness can hardly be the result of artificial formation, since thus the other parts would have been deformed, where-



Figure 2. Father Odilo Alt excavating at the Bedico Creek site (16TA17) in December 1933. He appears to be holding a long bone, possibly human. Courtesy LSU Museum of Natural Science.

Mann (continued)

as the skull in all its other parts shows a normal cranial development. The jaw bones are very prominent. On the left parietal bone there is a circular spot or scarification about 2½ inches in diameter which extends over the coronal suture to the frontal bone. This wound must have been inflicted long before death, a fact evidenced by the reparative growth of the spicules. The teeth are in a surprisingly good state of preservation. They are very noteworthy for their large size. Whilst the incisors have preserved their chisel-like form, the others are worn off to a quite marked extent, a condition which points to a coarse vegetable diet.

Continuing in this new pit, Father Alt found two more poorly preserved skulls and near them several large pieces of pottery that "bore the same linear design." Later Father Alt was able to mend several of these sherds. Further on in their excavations the crew recovered another intact skull. This one was described as a medium sized skull that resembled the first except that the flattening of the forehead was not as pronounced. This skull exhibited "an almost rectangular

hole about 7-8 of an inch long and about 5-8 of an inch wide reaching to the lower end of the lambdoid suture" (Alt 1934b:69). Father Alt concluded that the hole was caused by a violent blow that also caused a crack nearly an inch long in the right parietal bone. He did not speculate as to whether or not the blow occurred peri- or postmortem. As they continued the excavators exposed another rectangular hearth feature. This one was larger than the first and contained ash and charcoa deposits up to eight inches thick. Among the bones and pottery of this feature Father Alt (1934b:69) recovered "two rough pieces of obsidian," the first stone they had encountered in their excavations. Digging deeper, the crew encountered several more poorly preserved crania. By the end of the day Father Alt (1934b:69) estimated that they had uncovered "about 18 skulls." Father Alt (1934b:70) returned to the site twice more but besides "a number of bones and some pottery as before I found nothing new other than one well shaped arrow head about a foot below the surface of the mound." He also dug a hole through the shell layer to see if any there were any deposits below. Digging "about a foot into the black ground" under the shell he found no evidence of pottery or bones.

Based on these excavations Father Alt formed several conclusions about the site. First, he

Mann (continued)

(1934b:70) noted that the shell mound was human-made and that it was likely the result of the “mere accumulation of empty shells” built up over time by the “early inhabitants in the vicinity” who “regularly assembled there to feed on fish and mollusks which they found in such vast quantities in the river and lake.” He further determined that the site was “prehistoric” due to the lack of any European-made materials at the site, that the human remains were the result of secondary burials, that the fire pits may have been associated with secondary burial practices (though he earlier notes that they may be related to feasting at the site), and finally that the pottery was broken either during rituals related to secondary burial practices or during the “repasts” that took place at the site (Alt 1934b:70, 74).

In order to try and tie together all that is known about the Bedico Creek site I contacted Father Dominic Braud of the Saint Joseph Abbey and he confirmed that the Abbey still had Father Alt’s collection, which included materials from several other sites as well as the Bedico Creek assemblage. I visited Father Braud in May 2003 and he was kind enough to show me Father Alt’s entire collection, which has become somewhat mixed over the years. The collection consists of several drawers of lithic artifacts, the results of Father Alt’s walks along the creek banks and in the farm fields around the Abbey. One drawer contained a large collection of pottery that Father Braud believes is from the Bedico Creek excavations. Father Braud agreed to loan these artifacts to me for inventorying and identification. It can be reasonably assumed that these artifacts are from the Bedico Creek site (16TA17).

The collection consists of a total of 181 items, including 170 ceramic sherds, six unmodified stones, three prehistoric lithics, one piece of unidentified bone (0.05 grams) and one small clay (pinch?) pot that likely is not from the Bedico Creek site (see Table 1). The collection includes the partial vessel that Father Alt mended. It is a Marksville Incised, *var. Spanish Fort* jar/storage vessel with a scalloped rim (Figure 3). It has a rim diameter of 28 cm, very close to Father Alt’s (1934b:69) estimation that the “original vessel must have had a diameter of more than a foot.” The collection also contains six pieces of stone, but no obsidian. Two pieces of a bluish-gray metamorphic rock identified as serpentinite by Dr. Dale Henry of the LSU Geology Department may be the “two rough pieces of obsidian” mentioned by Father Alt (1934b:69). The lithics in the collection consist of just one small ovoid biface and two pieces of shatter. The “well shaped arrow head” found by Father Alt (1934b:70) has probably been mixed in with

the extensive collection of lithics and projectile points from other sites. Father Alt also kept at least one of the two well-preserved skulls he recovered. A photograph of a skull presumably from the site is included in the collection of photographs of Father Alt’s excavations donated to the LSU Museum of Natural Science by Father Braud in 1986. It shows an adult with cranial deformation similar to that of the skull described by Father Alt (1934b:69). The skull was not present among the collection when I visited the Abbey and Father Braud was not sure when it disappeared, but the collection used to be loaned out to schools in the area and it likely disappeared at that time.

In April 2003 Chip McGimsey and I visited the Bedico Creek site (Mann 2003). It appears to be in just about the same shape as it was when Saunders (1993:20) last visited the site in 1993. It is a large oval to semi-circular *rangia* shell midden that has been extensively disturbed in at least two areas. The only minor change is that a wooden dock has been added and the remains of an aborted attempt to construct a camp are now present on the site. Chip and I made a visual inspection of the site and collected a very small sample of artifacts. These include three Baytown Plain, *var. unspecified* sherds and one sherd of Mabin Stamped, *var. Crooks*. While I mapped the site, Chip took three push probe soil cores across the site. During our inspection of the site we also encountered a small fragment of human bone on the surface near a rodent hole. It appeared to be a fragment of a human tibia and exhibited possible cut marks. We photographed the fragment and replaced it where it was found. I informed Tom Eubanks, then State Archaeologist, and Kim Walden of the Chitimacha Tribe of Louisiana that we had encountered human remains and that the bone was not collected from the site.

Despite extensive disturbance from shell mining, excavation and pot hunting, the Bedico Creek site (16TA17) appears to still contain intact cultural deposits. Diagnostic artifacts indicate that the site was occupied during the Tchefonche, Marksville, Coles Creek and Mississippi Periods. Soil cores demonstrated that there is anywhere from .5 to one meter of intact shell and earth midden deposits on the site. Father Alt’s excavations indicate that there are substantial surface features including large hearths and human burials. Our cursory examination of the site confirmed the presence of human remains. Though disturbed, the Bedico Creek site remains just what Father Alt believed it to be; a “considerable” shell midden, which still holds the potential to inform us about the lives of the “early inhabitants” of the region.

Mann (continued)

References Cited

Alt, Odilo.

1934a A Prehistoric Find at Bedico, LA. *The Abbey Chronicle* VIII(4):49-50.

1934b A Prehistoric Find at Bedico, LA. *The Abbey Chronicle* VIII(5):68-70, 74.

Mann, Rob

2003 *2003 Annual Report for Management Units IV and V, Regional Archaeology Program, Museum of Natural Science, Louisiana State University.* Report on file at the Division of Archaeology, Baton Rouge.

Neuman, Robert W.

1984 *An Introduction to Louisiana Archaeology.* Louisiana State University Press, Baton Rouge.

Saltus, Allen. R., Jr.

1988 *Submerged Cultural Resources Investigations of Various Waterways of Lake Ponchartrain's North Shore.* Report on file at the Division of Archaeology, Baton Rouge.

Saunders, Rebecca.

1993 *1993 Annual Report for Management Units 4 and 5 Regional Archaeology Program, Museum of Natural Science, Louisiana State University.* Submitted to the Division of Archaeology, Department of Culture, Recreation and Tourism, Baton Rouge, Louisiana.

Table 1. The Father Odilo Alt Collection, 16TA17

Artifact Type	Count	Comment
Baytown Plain, var. unspecified	99	72 body (1 drilled), 27 rims
Marksville Incised, var. Spanish Fort	24	at least 17 mend to one vessel
Marksville Incised, var. Marksville	13	all body sherds
Marksville Stamped, var. Marksville	1	
French Fork Incised, var. unspecified	6	
Leland Incised (?), var. unspecified	1	
Mazique Incised, var. unspecified	8	
Coles Creek Incised, var. Coles Creek	3	
Coles Creek Incised, var. unspecified	1	
Ponchartrain Check Stamped, var. unspecified	3	
Troyville Stamped, var. unspecified	1	
Larto Red, var. unspecified	1	
Anna Incised, var. unspecified	1	
Unidentified Interior Incised	1	
Alexander Incised (?)	1	
Tchefuncte Incised, var. unspecified	2	
Tammany Punctated, var. unspecified	1	
Mississippi Plain, var. unspecified	1	
Unidentified Punctated	1	
Biface	1	Ovoid
Shatter	2	
Unidentified bone	1	0.05 grams
Unmodified stone	6	
Small clay effigy(?) pot	1	Probably not from Bedico Creek

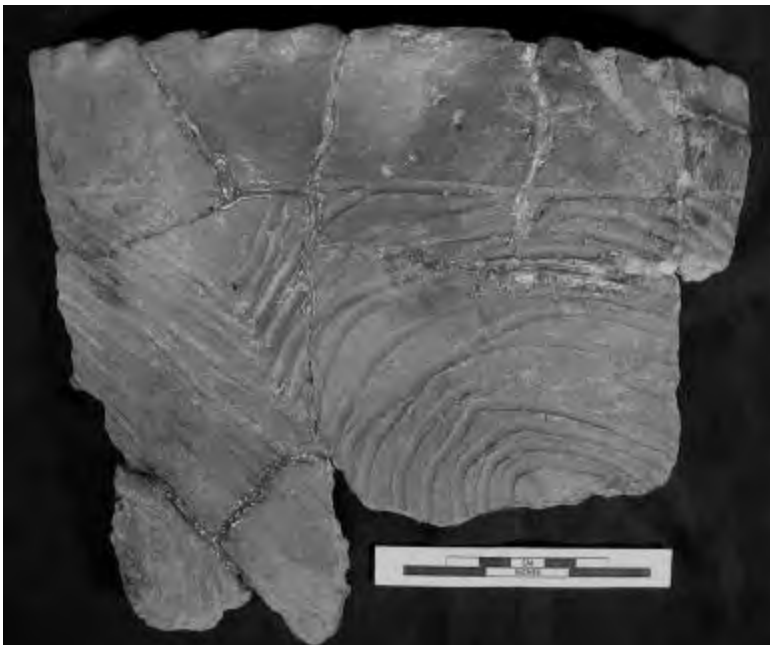


Figure 3. Marksville vessel from Father Odilo Alt

LOUISIANA ARCHAEOLOGICAL SOCIETY EXECUTIVE COMMITTEE MEETING

December 2, 2006
Pineville, Louisiana

The Executive Committee of the Louisiana Archaeological Society met Saturday, December 2, 2006 at the USDA Forestry Service Conference Room in Pineville, Louisiana. President Ellen Ibert called the meeting to order at 11:20 A.M. Members present were:

Ellen Ibert – President

George Riser – Vice President/President Elect

Maureen Downey -- Secretary

Chip McGimsey -- Bulletin Editor

Dennis Jones – Newsletter Editor

Junior Doughty – Web Site Editor

John Guy – LAS Representative at Large

Reca Jones – Northeast Chapter Representative

Nancy Affeltranger -- CLAC President

Marc Dupuy

Velicia Bergstrom

Scott Wehner

Minutes: Dennis Jones made a motion, seconded by John Guy, to accept the minutes of the August 26, 2006 LAS Executive Committee meeting. The motion passed unanimously.

REPORTS

President: Ellen Ibert welcomed everyone. She opened discussion on the 2007 Annual Meeting that will be held in Leesville on February 9-11, 2007. Rooms are \$60.00. Registration is \$25.00 (\$35.00 at the door) and the banquet is \$25.00. Tours will be held on Friday and Sunday. Keynote speaker will be Dr. Jay K. Johnson. Items for the silent auction may be sent to Chip McGimsey who will be coordinating the auction. John Guy announced that the WLAC would have t-shirts for sale at the meeting. Reca Jones motioned that the new award in honor of Marie Sandifer sponsor an outstanding graduate student at the LAS Annual Meetings. The recipient of the award will be required to present a paper at the Meeting. John Guy seconded the motion that was unanimously approved. An announcement of the award will be placed in the Newsletter. Nominations are to be submitted to Chip McGimsey. Discussion was held regarding registration for the Annual Meeting on the LAS web site.

Vice President: George Riser reported on the search for a new state archaeologist.

Treasurer and Membership: Josetta LeBoeuf was unable to attend the meeting.

Bulletin Report: Bulletin Editor Chip McGimsey stated that the Bulletin is expected to be completed shortly. He will use the bulk mailing permit if it is still valid at the time

of the mailing. Chip emphasized the need for submissions to the Bulletin.

Newsletter Report: Newsletter Editor Dennis Jones said that he has received few submissions so far. Since he believes that the casual format of the Newsletter should support items of interest from all members, he welcomes all submissions. He plans to place the Annual Meeting information in the next Newsletter. Also included will be minutes from the Antiquities Commission meetings. Dennis plans to limit the Newsletters to no more than 28 pages and to use standard mailing as approved by the Executive Committee at its last meeting.

Web Site: Junior Doughty reported that the LAS web site is averaging 86 hits a day. He reminded everyone to use the Barnes & Noble link on the LAS web site when ordering books. The LAS receives a percentage of the purchase price.

CHAPTER REPORTS

Northeast Louisiana: Reca Jones described the Archaeology Week programs in the Northeast region and reported that they were well attended.

Central Louisiana Archaeology Chapter: Nancy Affeltranger described the Archaeology Week activities sponsored by the CLAC. She said that the activities received much favorable comment.

West Louisiana Archaeology Club: John Guy reported that the WLAC-sponsored Archaeology Week activities were very successful. Ellen Ibert said that the brown bag lunches held at Fort Polk were also well attended. John announced that a number of archaeological sites have been exposed because of lowered water in Lake Vernon.

Baton Rouge Chapter: Dennis Jones stated that Stephanie Perrault was doing a great job as the program chairperson for the Baton Rouge Chapter. Norm Davis recently spoke at the Chapter on his research on the Poverty Point site.

Lake Charles: Scott Wehner said the club now had approximately 9 members who were meeting on a regular basis at the library at McNeese on the third Thursday of the month.

Delta Chapter: Ellen Ibert related a report given to her by Rogers Serpas. He stated that he was contacting past Delta Chapter members regarding scheduling meetings. The Committee discussed possible procedures to resolve the Chapter's problems

ONGOING/UNFINISHED BUSINESS

Ellen Ibert thanked Marc Dupuy for donating the funds to purchase the camcorder to be used to record the Annual Meetings. The Committee is attempting to discover the location of missing tapes of early meetings recorded by John Polk.

12/02/06 LAS Exec. Comm. Mtg. minutes (cont.)

A committee to seek nominations for the position of LAS secretary was formed. The members of the committee will be George Riser, Velicia Bergstrom, and Jr. Doughty, Chair. An announcement will be placed in the Newsletter.

The next Executive Committee meeting will be 5:00 P.M., Friday, February 9, 2007 at the Landmark Hotel, Leesville, LA.

There being no further business, a motion was made by John Guy and seconded by Recca Jones, to adjourn the meeting. Motion passed unanimously and Ellen Ibert adjourned the meeting at 12:55 P.M.

LOUISIANA ARCHAEOLOGICAL SOCIETY EXECUTIVE COMMITTEE MEETING

February 9, 2007
Leesville, LA.

The Executive Committee of the Louisiana Archaeological Society met Friday, February 9, 2007, at the Landmark Hotel, Leesville, LA. Attendees were Ellen Ibert, President; George Riser, Vice President/President Elect; Maureen Downey, Secretary; Chip McGimsey, Bulletin Editor; Dennis Jones, Newsletter Editor; Junior Doughty, Web Site Editor; John Guy, LAS Representative at Large; Recca B. Jones, NE Chapter Representative; Nancy Affeltranger, CLAC President; and Velicia Bergstrom, Pineville.

December 2, 2006 minutes approved.

The former Shreveport Chapter forwarded funds left in their treasury to the LAS requesting that the funds be available if the chapter is reestablished. The Executive Committee agreed but will consult treasurer before making decision on how it should be handled.

The LAS approved a motion to write a letter in support of adding the Poverty Point State Historic Site to the World Heritage List.

Ellen Ibert will represent the LAS at interviews of the five State Archaeologists candidates.

Dennis Jones will check into a request from *The Coastal Archaeological Newsletter* for articles by LAS members. It will be discussed further at the next Executive Committee meeting.

The Nominating Committee (George Riser, Junior Doughty, and Velicia Bergstrom) to meet after the Executive Committee meeting to discuss candidates for LAS secretary.

LAS 2006 Financial Report: Savings account -- \$9,192.02. Checking account --\$8,378.38. Total assets as of 12/31/2006 -- 7,570.40.

02/09/07 LAS Exec. Comm. Mtg. Minutes (cont.)

Membership Report: 2006 members -- 203. Contacting non-renewing members from past years will be considered at the next Executive Committee meeting.

Bulletin No 27 is expected to be mailed soon. Plans are to publish more than one bulletin this year. The Production Editor has moved and the membership will be ask for volunteers. Submissions are needed and this is to be addressed at the General Membership meeting.

Submissions requested for Newsletter. Next Newsletter will focus on the 2007 Annual Meeting. Increase in the overall expense of the Newsletter attributed to first class postage to address problems with receipt of the Newsletters and to increase of prices by printer. Possibilities of a new printer to be investigated. Suggestion made to place a sample Newsletter on the LAS web site.

In January, the LAS web site averaged 148 hits/day. Membership reminded to use the Barnes & Noble link on the web site when ordering books.

WLAC thanked for hosting the Annual Meeting and for a job very well done. Last minute problems took much hard work to resolve.

Northeast Louisiana Chapter meets the third Thursday of the month at ULM.

Latest CLAC meeting featured talk by Pete Gregory and was well attended. CLAC meets the second Thursday of the month at Ball Municipal Bldg.

The Baton Rouge Chapter meets regularly at the Bluebonnet Library. Stephanie Perrault is program chairperson.

The Executive Committee will attempt to help the Delta Chapter resolve its problems.

Proposed Amendment to LAS By-Laws would change the wording in Article III, Section 4 and 6 of the By-Laws to state that both the President and the Treasurer will be required to sign checks of \$500.00 or more; but checks under \$500.00 will require only one signature. Proposed amendment to be submitted for approval at the General Membership meeting.

Location for the 2008 Annual Meeting will be discussed at the General Membership Meeting.

Proposal to hold a joint Louisiana and Mississippi Annual Meeting was received. Motion approved to hold discussion on the proposal at the General Membership Meeting. The Executive Committee will then further consider the proposal at its next meeting.

Next Executive Committee meeting at Kisatchie National Forest Complex, Pineville, LA, date to be announced.

Meeting adjourned at 6:35 P.M.

**LOUISIANA ARCHAEOLOGICAL SOCIETY
MINUTES OF THE 33rd ANNUAL GENERAL MEMBERSHIP MEETING
February 10, 2007**

The LAS Annual General Membership Meeting was held Saturday, February 10, 2007 at the Landmark Hotel, Leesville, LA. Meeting called to order at 4:10 P.M.

Minutes of the LAS Annual General Membership Meeting held 2-4-2006 approved as published in the Spring 2006 LAS Newsletter, Volume 34, No. 1.

President Ellen Ibert will represent the LAS at the interviews of the five State Archaeologists candidates.

The membership voted in favor of submitting a letter in support of adding the Poverty Point State Historic Site to the World Heritage List.

There were 63 registered attendees at the Annual Meeting and 47 persons registered for the banquet at which Dr. Jay K. Johnson will give a talk entitled *Remote Sensing, Geophysical Survey, and Ground Truth Archaeology in the Lower Mississippi Valley*.

Ellen Ibert introduced George Riser, Vice President, President-Elect of the LAS.

LAS 2006 Financial Report: Savings account -- \$9,192.02. Checking account -- \$8,378.38. Total assets as of 12/31/2006 -- \$17,570.40.

2006 LAS membership -- 203. Past President John Polk praised for his efforts in increasing institutional membership.

Bulletin No 27 expected to be at the printer shortly and mailed soon afterward. Content for three other Bulletins is presently in the editing process. Plans are to publish more than one Bulletin this year. Submissions are needed for future Bulletins. Bulletin Production Editor has relocated to another state. Anyone interested in the position may contact Bulletin Editor Chip McGimsey.

Submissions requested for the Newsletter. Newsletter Editor Dennis Jones' contact information is located on the LAS web site and in the Newsletter. The three Newsletters published each year are to coordinate with events important to the Society. Next Newsletter will focus on the 2007 Annual Meeting. Two reasons for the recent increase in the overall expense of the Newsletter: first class postage to address problems with receipt of the Newsletters, and increase in the printer's prices. Plans are to investigate other possibilities for the printing of the Newsletter.

In January, the LAS web site averaged 148 hits/day. The week previous to the 2007 Annual Meeting the site was averaging 300 hits/day. The membership was reminded to use the Barnes & Noble link on the LAS web site when ordering books. The LAS receives a percentage of the purchase price. Junior Doughty explained the procedure to use the link.

Grant Chairperson Ann Wehner invited members to contact her with ideas and suggestions. Nancy Affeltranger and Stephanie Perrault volunteered to assist Ann on the committee.

The membership gave their appreciation for a job extremely well done to the WLAC, host of the Annual Meeting. Some last minute problems that took much hard work to resolve were encountered. John Guy reported on the evaluation of the Screaming Eagle site in Beauregard Parish.

The latest CLAC featured a talk by Pete Gregory that was very well attended. In addition to other activities, the Chapter recently participated in Native American Day. CLAC President Nancy Affeltranger recommended all Chapter try to participate in as many community events as possible. The CLAC meets the second Thursday of the month at Ball Municipal Building.

Program Chairperson Stephanie Perrault reported a very successful year in 2006 for the Baton Rouge Chapter with interesting speakers and well attended meetings. She wishes to expand Chapter activities in the coming year to include more than just speakers. She reminded Chapters of the \$100.00 available from the LAS for speaker expenses. The Baton Rouge Chapter meets the last Wednesday of the month in the library on Bluebonnet.

Reca Jones reported that the Northeast Chapter was meeting regularly on the third Thursday of the month at ULM.

The new Southwest Louisiana/Lake Charles archaeology club now has approximately 9 members who meet on a regular basis at the McNeese Library the third Thursday of the month. The club wishes to become a LAS chapter.

The proposed amendments to the LAS By-Laws change the wording in Article III, Sections 4 and 6 to state that both the President and the Treasurer will be required to sign checks of \$500.00 or more. Checks under \$500.00 will require only one signature to allow the Treasurer to more timely conduct business. A motion to modify the proposed amendments to state that both the President and the Treasurer will be required to sign

MINUTES OF THE 33rd ANNUAL GENERAL MEMBERSHIP MEETING (cont.)

checks of \$500.00 or more; but checks under \$500.00 will require only one signature on the condition that the treasurer is bonded in an amount to cover all funds in the LAS accounts. The motion was seconded and passed with three members opposing.

A resolution presented to the membership for approval stated that immediately upon the inception of the term of the new president of the LAS, a checking account signature card be signed by the new president enabling the requirements of the amended Article III, Sections 4 and 6 to be effortlessly and timely met. A motion was made and seconded to approve the resolution. The motion passed, one member opposing.

A nominating committee consisting of George Riser, Junior Doughty, and Velicia Bergstrom presented Rachel Watson as nominee for the position of LAS secretary. Rachel Watson was elected unanimously.

A decision on the proposition that Louisiana and Mississippi hold a joint Annual Meeting was delayed until further discussion could be held.

The 2008 Annual Meeting will be held in the New Orleans area. Further information will be included in the Newsletter.

Earth Day, Baton Rouge -- April 22, 2007. Joesetta LeBoeuf will be at the LAS table and she encouraged everyone to attend.

Ellen Ibert urged everyone to join the Louisiana Archaeological Conservancy. She described the LAC and its work, explaining that it is a non-profit organization dedicated to preserving Louisiana's archaeological heritage. It assists private landowners to protect sites on their properties and also awards archaeological research grants. The LAC presently has three sites protected by Archaeological Conservation servitudes. Information on becoming a member can be found in the LAS Newsletter.

UPPA will hold its Spring meeting March 16-18, 2007 at Poverty Point State Historic Site. Norm Davis is the new president of UPPA.

Ellen Ibert reminded everyone a new Vice President/President-Elect would be elected at the 2008 Annual Meeting. Nominations may be sent to any Executive Committee member.

Chip McGimsey announced that the silent auction would be ending shortly after the meeting.

A motion to adjourn the meeting was made, seconded, and passed unanimously. Meeting adjourned at 5:40 P.M.

LOUISIANA ARCHAEOLOGICAL CONSERVANCY**Leesville, Louisiana****February 9, 2007**

President Kathleen Bergeron called the meeting to order at 6:45 P.M., Friday, February 9, 2007 at the Landmark Hotel, Leesville, Louisiana. Present were Kathleen Bergeron, President; Stu Braud, Vice President; Maureen Downey, Secretary; Marc Dupuy; Ellen Ibert; Velicia Bergstrom; Roger Bergstrom; Dennis Jones; and Jim Delahoussaye.

Corrected minutes of the December 2, 2006 LAC meeting held in Pineville, LA were approved.

Kathleen thanked Dennis Jones for placing the LAC flyer in the last LAS Newsletter and at the LAS registration table. Dennis will present the draft of the redesigned LAC brochure at the next meeting.

It was decided it was not necessary for the LAC to attempt any action regarding the two Union gunboats located on the Corps of Engineers right-of-way at Eastport on the Red River. The boats were never decommissioned and are still the property of the Navy. For the benefit of new members, the LAC as an organization and its purposes was discussed. Dennis Jones will make sure that the new owner of the

Highland Stockade is aware of the servitude. Marc Dupuy suggested that a sign be placed on the Jake's Cabin servitude donated by Marie Sandifer. Mr. Kurt Feigly is still interested in the donation of an archaeological conservation servitude for the site that research suggests was the location of "McGehee's Camp" during the Civil War. The site still needs to be visited for verification.

LAC checking account balance as of 2-9-2007 -- \$8,906.16. A motion that formal financial report be submitted by the Treasurer at regular intervals was made and seconded. Motion passed.

Marc Dupuy has filed the Domestic Corporation Annual Report with the Secretary of State.

Kathleen Bergeron will send a letter to the new State Archaeologists to ensure that he is aware of the LAC and its activities in the state. Kathleen will also send a letter for the LAC supporting inclusion of Poverty Point State Historic Site in the World Heritage List.

LAC officers for 2007 are Kathleen Bergeron, President; Stu Braud, Vice President; Scott Wehner, Treasurer; Velicia Bergstrom, Secretary. Directors for 2007 are Dennis Jones, Roger Bergstrom, Ellen Ibert, Marc Dupuy, Joesetta LeBoeuf, and Maureen Downey.

LAC Minutes (cont.)

Date and time of the next meeting of the LAC will be announced later. Kathleen Bergeron suggested that the LAC meet first and the LAS meet after the LAC meeting.

The meeting was adjourned at 7:50 P.M. Minutes reported by Maureen Downey, Secretary

**LOUISIANA ARCHAEOLOGICAL SURVEY AND
ANTIQUITIES COMMISSION
December 12, 2006**

The Louisiana Archaeological Survey and Antiquities Commission met in regular session on Tuesday, December 12, 2006, at 1:30 p.m. in the Capitol Annex Building, 1051 North Third Street, Conference Room 238A, Baton Rouge, Louisiana.

Members Present:

Dr. Heather McKillop, Mr. Gregory DuCote, Mr. Marc Dupuy, Jr., Mr. James Fogleman, Dr. George Riser

Members Absent: Ms. Paige Ashby, Ms. Pam Breaux

Others Present:

Ms. Jessica Dixon, Ms. Agnes Fogleman, Dr. Diana Greenlee, Ms. Nancy Hawkins, Ms. Eleanor McKillop, Ms. Karen Richardson, Mr. Duke Rivet, Ms. Sherry Wagener, Ms. Rachel Watson, Ms. Cheraki Williams

Welcome & Introductions

Dr. Heather McKillop called the meeting to order at 1:30 p.m. Ms. Pam Breaux was unable to attend the meeting and had given her proxy to Mr. Duke Rivet. Dr. McKillop expressed her appreciation to the Division of Archaeology for their efforts in processing an increasing number of Section 106 reviews while at the same time experiencing a staffing shortage.

The first order of business was the approval of the minutes from the Commission Meeting held September 12, 2006.

MOTION: *A motion was made by Mr. James Fogleman and seconded by Mr. Marc Dupuy, to accept the minutes of the September 12, 2006, Antiquities Commission Meeting as written. The motion carried unanimously.*

Old BusinessGIS Update

Ms. Rachel Watson spoke briefly to the Commission on the progress of the new GIS System installation. The hardware and software had been installed with some glitches yet to be worked out.

Staffing Update

The State Civil Service application period for the Section 106 Archaeologist 1 and Archaeologist 2 positions ended on November 30th. Lists of qualified applicants are expected momentarily. The State Civil Service announcement for the State Archaeologist position will close on December 15th. A list of qualified applicants is expected shortly thereafter. An update on the status of these positions will be presented at the next commission meeting.

Section 106 Update

Mr. Duke Rivet reported to the Commission that the commencement of burial excavations under the "Treatment Plan for Additional Phase III Burial Recoveries at Site 16CA114, Bayou de Chene Reservoir, Caldwell Parish, Louisiana" was scheduled for October 30th. Due to right-of-entry issues, expropriation proceedings will have to take place. Consequently, the resumption of the burial excavations will have to wait until this is completed.

New BusinessQuapaw NAGPRA Repatriation

Ms. Sherry Wagener reported that the curation facility is currently in possession of artifacts from the donation in 1982 and 1985 of the Pohler collections. The collections, which consist largely of whole vessels and lithics, contain over 34,000 artifacts. Most of the artifacts are from other states and obtained by the Pohlers on the open market. Ms. Wagener has been in consultation with Ms. Carrie Wilson, the NAGPRA officer with the Quapaw Tribe and will repatriate 642 whole, Mississippian-period vessels from the collection. Artifacts from the Archaic period are of unknown tribal origin and will be retained by the state curation facility. Color photographs will be taken of the remaining vessels and of a representative sample of the lithics for distribution to other states for possible identification and repatriation.

Ms. Wagener also informed the commission that Fort Jackson is the recipient of a Save America's Treasures Grant that will be used to stabilize the Fort Jackson artifacts damaged by Hurricane Katrina and build a museum outside the fort.

Annual Update-Poverty Point Station Archaeologist

Dr. McKillop introduced the new Poverty Point Station Archaeologist, Dr. Diana Greenlee, to the commission. Dr. Greenlee received her Ph.D. from the University of Washington. Her research interests include the study of prehistoric subsistence and diet, and how they relate to paleoenvironment and settlement. Dr. Greenlee noted that relatively little is known about subsistence at Poverty Point and much of the little that is known is based on samples from other sites of the same

Antiquities Commission Meeting (continued)

time period. She expressed her interest in applying new technologies to the study of the archaeology at Poverty Point with minimal disturbance to the site. Dr. Greenlee described to the commission several projects that she has undertaken since she began work at Poverty Point. She has worked with the site manager, Mr. Dennis LaBatt, to address several erosion problems. One problem area, affecting Ridges 4 and 5 North, involved the installation of a culvert by DOTD to channel the flow of rainwater into Harlan Bayou. When digging the trench for the culvert, DOTD encountered a small feature that contained charred wood and PPOs. After consultation with Dr. Joe Saunders and the Division of Archaeology, Dr. Greenlee removed the feature. She also arranged for the dirt from the culvert trench to be transported to the lab for future screening. Another significant area of erosion, located behind Mound B, will be repaired with funds provided by the US Army Corps of Engineers and the Louisiana Office of State Parks. Lastly, several tree falls at various locations will require work to prevent future, additional erosion to the site.

Drs. Hargrave and Clay continued their survey of the plaza and Ridges 1 and 2 using a magnetic gradiometer. They have documented several circular to oval magnetic anomalies about 25 to 30 meters in diameter. Additionally, they were able to identify a gap in the ridges that seems to correspond to a western aisle leading to Mound A. Dr. Saunders and Mr. Thurman Allen collected cores from some of the anomalies, and Dr. Greenlee provided sediment samples from them to Dr. Rinita Dalan for magnetic susceptibility analysis to determine the source of the anomalies.

Other activities Dr. Greenlee has been engaged in include: 1) outreach activities during Fall School Days, Archaeology Week events and talks at local schools that have involved approximately 850 students; 2) evaluating the current status of cataloging and curation efforts at the station; and 3) working with Dr. Mark Barnes of the NPS on Poverty Point's application for the U.S. World Heritage tentative list. The WHS applications are due April 1, 2007, and Dr. Greenlee expects to have a draft ready by mid-Jan.

There being no further questions, comments, or other business to bring before the commission, Dr. McKillop entertained a motion to adjourn

MOTION: *A motion to adjourn was made by Dr. George Riser and seconded by Mr. Gregory DuCote. The motion carried unanimously and the meeting adjourned at 3:30 p.m.*

Louisiana DOTD Archaeology

Liz Davoli

R. Christopher Goodwin and Associates will soon begin data recovery investigations at the Star Hill Sugar Mill Refinery site (16WF39) adjacent to US 61 in West Feliciana Parish. The site will be impacted by the widening of US 61. Two brick ruins, outside the project area can be seen from the highway.

Limited archaeological investigations were conducted in 1994 and 2000. In 94, a small portion of the site was within the required right-of-way and shovel testing recovered brick fragments. The landowner rescinded access after 11 shovel tests had been excavated. In 2000, shovel testing was again conducted at the site a high concentration of brick was noted in the vicinity of the standing brick ovens. As a result, a backhoe was used to excavate 6 trenches in the vicinity of the standing brick ovens. Intact subsurface brick features were discovered during the trenching. However, the landowner rescinded access to the property shortly after the discovery of these features. DOTD purchased the right-of-way and investigations can begin again.



View of the remains of the Star Hill Sugar Mill Refinery Site (16WF39) in West Feliciana Parish near Highway 61.

Meetings, Fieldwork, Exhibits, Etc.

Society for American Archaeology (SAA), 72nd Annual Meeting, Austin, Texas, April 25-29, 2007. Hilton Austin Hotel, 500 East 4th St., Austin, Texas 78701. Further information at www.saa.org.

Making Preservation Matter! –Louisiana Preservation Conference and Honor Awards.

May 4-6, 2007. The Atrium Hotel and Conference Center, 2001 Louisville, Monroe, La.

Tours, site visits, presentations. Sponsored by the Louisiana Trust for Historic Preservation, the Louisiana Division of Historic Preservation, and the Louisiana Division of Archaeology.

Questions? –Call Stacy Jamieson at (225) 344-6001.

See brochure enclosed with this newsletter.

The Station Archaeology Program at Poverty Point is looking for volunteers to help with screening dirt and/or sorting artifacts. Interested folks can contact Diana Greenlee via phone (318-926-3314) or email (greenlee@ulm.edu) for more information.

Arkansas Archeological Survey and Arkansas Archeological Society will cosponsor a Training Program in Archaeology June 9-24, 2007, at the Jones Mill Site (3HS28) in Hot Spring County, Arkansas. The Jones Mill Site, which is listed on the National Register, may have served as a home base during Middle and late Archaic periods for local groups of hunter-gatherers who worked novaculite from nearby quarries.

No experience is necessary to participate, and both adults and children as young as 8 (accompanied by an adult) are welcome. Participants receive hands-on instruction in field methods and have the opportunity to enroll in week-long seminars on a variety of archeological topics. Minimum length of stay is 3 days. Fees and expenses vary depending on length of stay. Registration costs are estimated to be about \$45-\$65, and participants cover their own costs of room and board. For more information, check the Arkansas Archeological Society web site at www.arkarch.org, or contact Barbara Scott at bhscott@uark.edu, or 479-575-3556.

Mobile's Exploreum museum premiers exhibit on Pompeii.

For the first time, Gulf Coast residents will be able to experience "a day in Pompeii" without leaving the region. Mobile's Gulf Coast Exploreum will host the major exhibition "A Day in Pompeii", January 12 to June 3, 2007, in collaboration with the Soprintendenza Archeologica di Pompei.

Southeastern Archaeological Conference (SEAC) 64th Annual Meeting

October 31st - November 3, 2007, Knoxville, Tennessee

The Archaeological Research Laboratory and Department of Anthropology at the University of Tennessee are pleased to host the 2007 Annual Meeting of the Southeastern Archaeological Conference in Knoxville.

Conference Hotel:

Holiday Inn Select Downtown

525 Henley St.

Knoxville, TN 37902

865-522-2800

865-523-0738(fax)

<http://www.hiselect.com/tys-downtown>

Also, check SEAC web site at www.southeasternarchaeology.org

LAS MEMBERSHIP APPLICATION AND DUES RENEWAL

Regular Membership	Annually \$20.00
Associate Membership	Annually \$5.00
Life Membership	\$200.00
Sustaining Membership	\$300.00
Student Membership	Annually \$12.00
Libraries & Institutions	Annually \$20.00

PLEASE PRINT OR TYPE

Name _____

Organization (optional) _____

Address _____

City _____ State _____ Zip _____

Email Address _____

Names of Associate Members _____

All memberships are for the calendar year, January 1 through December 31. Regardless of the time of year during which you join the society, you will receive all publications for the year specified.

Back Issues of LAS Bulletins, \$15.00 each. Orders of 10 to 14 copies, \$13.50 each;

orders of 15 or more copies, \$12.75 each. Available Bulletins are:

#1(1974), #3(1976), #7(1980), #8 (1981), #9 (1982), #10 (1983), #11 (1984), #12 (1985), #13 (1986), #14 (1987), #15 (1988), #16 (1989), #17(1990), #18(1991), #19(1992), #20(1993), #21(1994), #22(1995), #23(1996), #24(1997), #25(1998), #26 (1999).

Back Issues of LAS Special Publications:

SP #1 Stone Points and Tools of Northwestern Louisiana (1981, Reprinted 2000)	\$4.00
SP #2 LAS 10th Anniversary Issue (1984)	(out of print)
SP #3 Louisiana's Archaeological Radiometric Database	\$4.00

Optional Donation: Roger T Saucier Memorial Fund \$ _____ -

Make checks payable to:
Louisiana Archaeological Society

Send payment to:
Josetta LeBoeuf, LAS Treasurer
9364 Rainford
Baton Rouge, LA 70810

Information for Subscribers

The Newsletter of the Louisiana Archeological Society is published three times a year for the society. Subscription is by membership in the Louisiana Archaeological Society (LAS). Annual membership dues are \$20 for individuals, libraries, and institutions. \$5.00 for associates (relatives of individual members) and \$12 for students. Life membership dues are \$200 for individuals. Sustaining membership dues for individuals or institutions are \$300. In addition to the newsletter, members receive one issue per year of the bulletin Louisiana Archaeology. Membership requests, subscription dues, changes of address, and back issue orders should be directed to the Treasurer. Unless otherwise indicated, opinions stated herein are those of the Newsletter Editor and do not necessarily reflect society policy

Information for Contributors

Send all notes, news, graphics and other communication to:

Dennis Jones-LAS Newsletter Editor

Snail mail: 224 W. Parkland Dr, Baton Rouge, LA 70806

Email: archaeoman2003@yahoo.com

If possible articles should be submitted on computer disk or by email, preferably in Microsoft Word. Digital images are encouraged. Please send in JPG or TIFF format. Contact editor via email with all questions.

LAS Web Site

www.laarchaeology.org

LAS OFFICERS

President: Ellen Ibert, P.O Box 145, Anacoco, LA Tel 337 392 6104

Vice President: Dr. George Riser, Covington, LA.

Secretary: Maureen Downey, 103 Beaupre Dr., Luling, LA 70070 Tel. 504 785 25545

Treasurer: Josetta LeBoeuf, 9364 Rainford Rd., Baton Rouge, LA 70810

Bulletin Editor: Charles McGimsey, Dept. of Sociology and Anthropology, University of Louisiana at Lafayette, P.O. Box 40198, Lafayette, LA 70504 Tel. 337 482 6198

Newsletter Editor: Dennis Jones, 224 W. Parkland Dr., Baton Rouge, LA. Tel. 225 572 5464

Webmaster: Junior Doughty, 218 Major Doughty Road, Tullos, LA 71479. Tel. 318 534 6290

All officers can be contacted through the LAS website: www.laarchaeology.org

Louisiana Archaeological Society

9364 Rainford Rd.

Baton Rouge, LA,

70810

