



NEWSLETTER OF THE LOUISIANA ARCHAEOLOGICAL SOCIETY

Winter 2013/2014

Vol. 41, No. 3



**2014 Annual LAS Meeting
Northwestern State University
Natchitoches, LA
February 7-9, 2014
Sponsored by
National Center for Preservation
Technology and Training
(NCPTT) (below)
Information inside
Pages 2-4**

**2014 LAS Annual Meeting,
Banquet, and other functions
will be in
the Friedman Student Union
on NSU campus
(above)**



**LAS Newsletter printed courtesy of
R. Christopher Goodwin and Associates, Inc.
New Orleans**

LAS 2014 Annual Meeting

The 2014 Annual LAS meeting will be held Feb 7-9, 2014 on the campus of Northwestern State University in Natchitoches, Louisiana and hosted by the National Center for Preservation Technology and Training (NCPTT) on the campus of Northwestern State University in Natchitoches, Louisiana. The reception is from 6:00 to 8:00 pm at the Williamson Museum on Friday, Feb 7. Exhibits, book sales, and a silent auction are scheduled from 8:00 am to 5:00 pm on Saturday, Feb 8 in the Friedman NSU Student Union Ballroom, and the LAS business meeting is scheduled for 5:00 pm also in the NSU Student Union Ballroom. The banquet is scheduled for 7:00 pm in the Ballroom where **Dr. Thomas Guderjan** will deliver the Keynote address "**New Perspectives on Two Decades of Research on the Ancient Maya of Belize.**" Sunday activities on Feb 9 will be a tour of Cane River Plantations (see below).

Pre-registration (before February 1, 2014) is \$20.00
Registration after February 1, 2014 and at the meeting is \$25.00
***Cochon De Lait* Banquet: \$30.00 (limited to 65 persons)**
Payable by PayPal (preferred) on the website, or mail to:

Julie Doucet
 LAS Treasurer
 886 Bayside Avenue
 Baton Rouge, LA 70806

The conference is hosted on the Northwestern State University campus and there is no conference hotel. There is a list of hotels in the area where you may choose according to your needs on the LAS website: www.laarchaeology.org, as well as in this issue of the LAS newsletter. Several Bed and Breakfasts are located close to the NSU campus, but as these establishments have a limited number of rooms, please make your reservations early to ensure availability and to get the best pricing.

Paper Submissions and Abstracts

Presentations on Feb 9 will be limited to 20 minutes. If you would like to present a paper, email the title and abstract (100 words or less) by **January 15, 2014** to:

John (Tad) Britt, Program Chair for LAS 2014
 Chief, Archeology and Collections
 National Center for Preservation Technology and Training
 645 University Parkway
 Natchitoches, LA 71457, E-Mail: tad_britt@nps.gov
 Telephone: 318-521-5641 x 258 Cell: 318-521-5641



LAS Tour of Cane River Plantations Sunday Morning, Feb 9

A tour will be organized at the LAS meeting for attendees interested in visiting the special sites and sights in the Cane River Creole National Historical Park south of Natchitoches. This area, administered by the National Park Service, contains Melrose Plantation, Oakland Plantation, Magnolia Plantation, as well as the Creole community of Isle Brevelle.

Keynote Speaker for the 2014 LAS Annual Meeting

Dr. Thomas Guderjan

Tom Guderjan is an Associate Professor of Anthropology at the University of Texas at Tyler where he is the coordinator of the Social Sciences major. He is also the Director of the Blue Creek Archaeological Project. He began his career with a two year project at Fort Polk but since has conducted other fieldwork in Belize, Peru, Mexico, Texas and elsewhere. He is founder and Director of the Blue Creek Archaeological Project in Belize. Dr. Guderjan holds a Ph.D. from Southern Methodist University and has previously taught at Texas Christian University, St. Mary's University and been a senior staff member at the University of Texas Institute of Texan Cultures and can't figure out why he can't get a job outside of Texas! He has published several books and numerous articles and is currently co-editing a monograph on the research at Blue Creek and a volume on Maya commodities. His LAS keynote address will be:

New Perspectives on Two Decades of Research on the Ancient Maya of Belize

The University of Texas-Tyler is the lead institution in a consortium known as the Maya Research Program which has undertaken annual field research in NW Belize since 1992. This discussion will offer some background on those two decades of field work and outline the accomplishments of the 2013 field season and glimpse into the plans for 2014. In 2013, fieldwork included excavations of elite residences, a Maya council house, an elite lineage head complex, ancient agricultural systems, and inside Maya caves. These efforts were coupled with ongoing bio-archaeological work, ground surveys, remote sensing and digital recording efforts. In addition, 107 students from 6 countries were trained while joining the staff in their efforts.



Dr. Thomas Guderjan is on the faculty of the Social Sciences Department at the University of Texas-Tyler

**Accommodation Options
LAS 2014 Annual Meeting
Natchitoches, Louisiana
February 7-9, 2014**

The 2014 Annual Meeting of the Louisiana Archaeological Society will be held on the Northwestern State University campus in Natchitoches, so **there is no conference hotel**. The table below is a summary of the options for accommodations, grouped by location along with approximate pricing, and followed by contact information. Please make your reservations early to get the best pricing and to ensure availability.

I-49 Options	Hwy 1 Bypass Options
Hampton Inn- \$99/night	America's Best Value Inn - \$74/night
Quality Inn - \$70/night	Super 8 - \$61/night
Econo Lodge - \$68/night	
Best Western - \$109/night	Near Historic District and NSU Campus
Days Inn - \$68/night	Riverview Inn (50 rooms) \$70-\$80/night
Holiday Inn Express - \$114/night	Church St. Inn (20 rooms) - \$125/night
	College Inn - \$70/night

I-49 Options

Hampton Inn – 318.354.0010
5300 University Parkway 71457

Quality Inn – 318.352.7500
5362 University Parkway 71457

Econo Lodge Inn & Suites – 318.214.0700
5335 University Parkway 71457

Best Western – 888.771.3486
5131 University Parkway 71457

Days Inn – 38.352.0783
5135 University Parkway 71457

Holiday Inn Express – 800.315.2621
5137 University Parkway 71457

Hwy 1 Bypass Options

America's Best Value Inn – 318.357.8281
7624 Hwy 1 Bypass 71457

Super 8 – 318.352.1700
5821 Hwy 1 Bypass 71457

Near Historic District and NSU Campus

Riverview Inn – 318.357.0423
1316 Washington Street 71457

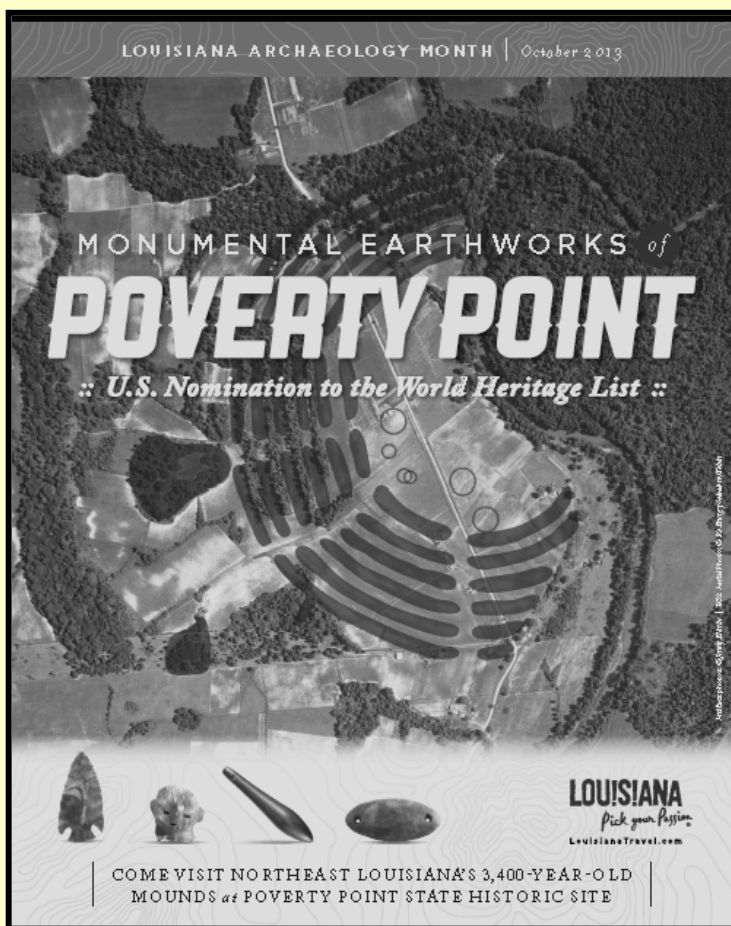
Church Street Inn – 800.668.9298
120 Church Street 71457

College Inn – 318.352.4426
1000 University Parkway 71457

Don't forget the LAS Silent Auction

All items relevant to archaeology, anthropology, art etc. may be donated to the LAS. Please contact Chip McGimsey at cmcgimsey@crt.la.gov with any questions or bring items with you to the annual meeting.

2014 LOUISIANA ARCHAEOLOGY MONTH



Above: Elderly visitor to the Louisiana Book Festival, Nov 2, 2014 in Baton Rouge, looks over offerings at the LAS booth. This event was incorporated into 2013 Louisiana Archaeology Month. Right: Charles Affeltranger demonstrates the accuracy of blow dart gun at an Archaeology Month event in Tioga.

Louisiana Archaeology Month is an annual celebration in October that promotes archaeology through talks, demonstrations, tours and displays for the public. The 2013 Archaeology Month calendar included 34 events in 17 communities throughout the state. Some activities were also part of the Archaeological Institute of America's (AIA) International Archaeology Day celebration. Although AIA focused on a single day, October 19, it also publicized archaeology events happening throughout the month of October.

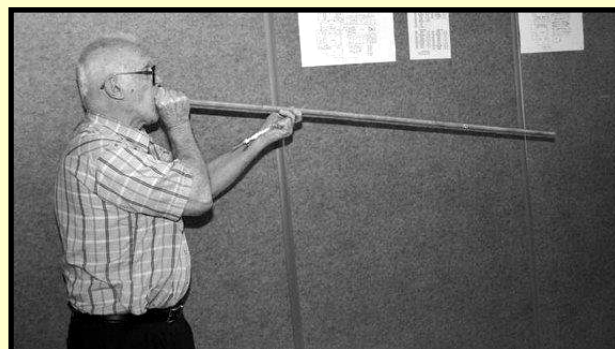
The Louisiana Archaeological Society (LAS), the U.S. Forest Service Kisatchie National Forest, and the state Division of Archaeology within the Department of Culture, Recreation and Tourism worked together to provide the framework for 2013 Louisiana Archaeology Month. The key tasks for the celebration were: 1) planning events, 2) compiling an online schedule, 3) working with news media and 4) preparing and distributing the Archaeology Month poster.

For 2013, the LAS executive board selected Poverty Point as the site to be featured on the poster, and it publicized the web address for the online schedule. Several LAS chapters, including the Central Louisiana Archaeology Club, the West Louisiana Archaeology Club, the Baton Rouge Chapter and the Northeast Chapter, arranged and promoted Archaeology Month events.

Many LAS members also organized and led programs in association with museums, universities, libraries, the Office of State Parks and the National Park Service. These individuals and organizations submitted information about their activities to the Division of Archaeology and contacted local news media to encourage publicity.

Kisatchie National Forest funded the design, printing and distribution of the Archaeology Month publicity poster. The Division of Archaeology coordinated the poster production and distribution as well as the online schedule.

If you have questions or recommendations, 2014, please contact anyone on the LAS executive board or Nancy Hawkins [nhawkins@crt.la.gov] at the Division of Archaeology. –*Nancy Hawkins*





Another event that was part of 2014 Louisiana Archaeology Month was the 15th annual meeting of the South Central Historic Archaeology Conference (SCHAC) held at the LSU Rural Life Museum in Baton Rouge, Oct. 4-6.

Over 50 people attended for a Friday, reception at the Museum and the presentations on Saturday. Several hardy souls from the conference also attended an early Sunday morning tour of the excavations at the Chatsworth Plantation site (16EBR192) during blustery conditions.

Honorees at the conference included the coveted tiara for the most clever paper title. Michael Carpenter of Coastal Environments, Inc (CEI) won with *Not Just Another Brick in the Wall: An Introduction to the Firebrick Industry in the Upper Ohio Valley and its Impact on the Louisiana Sugar Industry*.

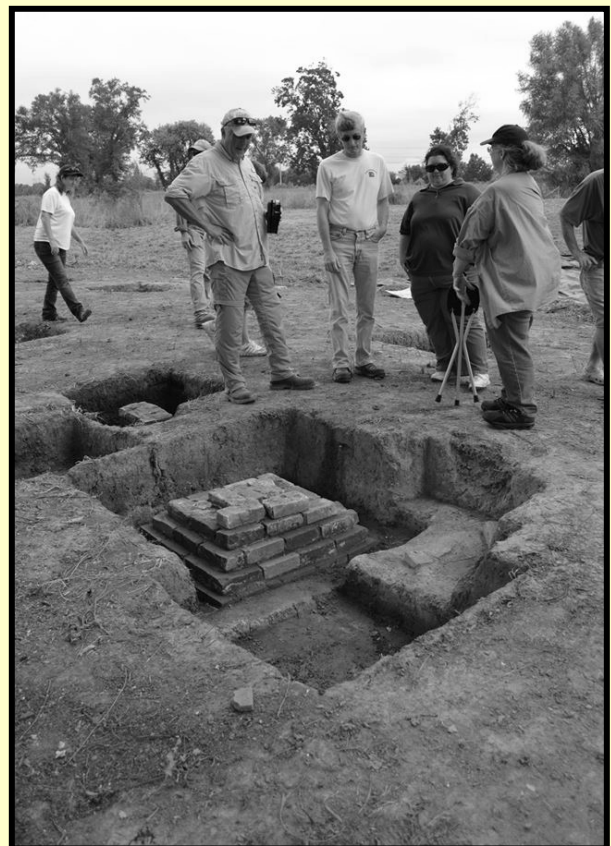
The 2014 SCHAC meeting is tentatively scheduled for Memphis, TN next autumn.



Michael Carpenter beams with pride upon receiving the SCHAC crown jewels.



Chauffeur driven ATV for the tour of Chatsworth Plantation was one of the many perks for those making the SCHAC tour.



SCHAC attendees ponder an excavated pier at the quarters area of Chatsworth Plantation.

LAS MEMBERSHIP AND CHAPTER NEWS

THE GOLDEN ERA OF POVERTY POINT

The humanity trek to North America
 "Where no man had gone before"
 Earth cover was three-fourths water
 The Ice Ages had closed the door
 With water frozen and land exposed
 The Bering Strait Land Bridge was discovered
 With the water level 200 feet lower
 In America Asian DNA was recovered
 Around fifteen thousand years ago
 These early explorers gave chase
 Heading South to better hunting lands
 Their movement was at a rapid pace
 The Pacific coast route seemed harsh
 Of potential highways South were two
 But east of the Rocky Mountains
 The Mackenzie Corridor broke through
 Not like Moses parting the waters
 They followed water flowing South
 A comfortable stream close to the Mississippi
 On the Macon Ridge they built a house
 With fish and game in abundance
 Many homes and monuments were built
 These folks being hunters and gatherers
 Filled baskets with dirt to the hilt
 To construct their monumental mounds
 Perhaps to honor their gods
 With no stones or granite available
 Great structures were built with dirt clods
 Six massive half circle long ridges
 Provided dry areas for each family to play
 Poverty Point left for the world to see
 Their main structure we call Mound A
 They settled thirty-seven hundred years ago
 And lived like New York City today
 We want to do our best
 So these remnants have a place to stay
 With their trade from Great Lakes to the Gulf
 And signal mounds with perfect location
 Their six hundred year era was Golden
 We should forever study their unique situation

Russ Greer, M.D.
 October 31, 2013

Poverty Point Site



Most of us who have visited the Poverty Point site are appropriately impressed. Few of us are inspired to the point of poetry, however. Dr. Russ Greer, lifetime member from Monroe, La. was so moved by the saga of Poverty Point that he did provide the verse here.

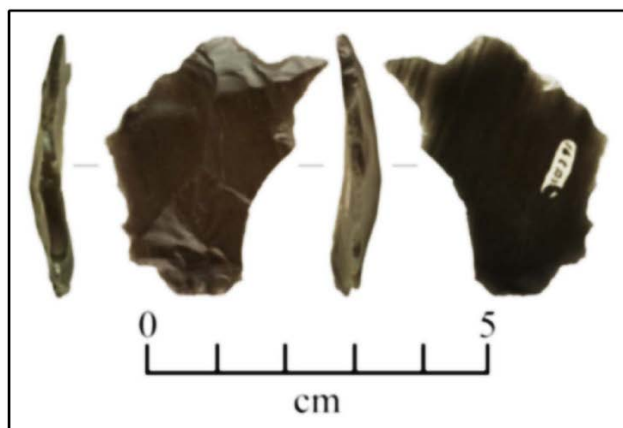
If the archaeology of Louisiana should lead others to be creative, please feel free to share your inspiration with others.
 -LAS Editor



LOUISIANA ARCHAEOLOGY

No. 37

2010



Contributions to Paleoindian Studies in Louisiana

Nest LAS Bulletin Coming Soon!

The 2010 issue of Louisiana Archaeology will be available in early 2014 just in time for the annual meeting in Natchitoches if everything goes as planned.

This issue focuses on the Paleoindian period within Louisiana prehistory, easily the least understood time for archaeologists working here and other parts of the Southeast.

Articles include a detailed construction of Anacoco Phases I, II, and III by James Moorehead and Brad Laffitte for the Late Paleoindian times in the Fort Polk area of west-central Louisiana.

Matthew Boulanger et al. from the Archaeometry Lab at the University of Missouri provide important data about the source of the first well documented obsidian artifact in Louisiana from the Twin Birds Islands site (16CD118).

Diana Greenlee and colleagues take a closer look at the obsidian artifacts recovered from Poverty Point. Their reassessment clarifies some of the past claims about Poverty Point's trade network.

Finally, Charlotte Pevny provides a detailed analysis of the Paleoindian artifacts from the Twin Birds Islands site. The use-wear analysis of these artifacts establishes a new standard of study for Paleoindian relics.

RESEARCH NEWS

A Mysterious Fire Transformed Prehistoric Cahokia around AD 1170

www.westerndigs.org, Sept. 26, 2013

Right around AD 1170, a devastating fire ripped through the main ceremonial plaza at the center of prehistoric Cahokia. After the fire, it appears that the city was a changed place: New architectural designs sprung up, along with new defensive walls. There was also a sudden influx of clay plates featuring sun symbolism. What happened? Who started that fire?

A new scientific investigation recently published in the *Journal of Field Archaeology* attempts to puzzle out what caused the fire, and what happened in the aftermath. University of Illinois at Urbana-Champaign archaeologist Timothy R. Pauketat and his colleagues pored over new dig sites in East St. Louis, and examined the evidence for the fire. The evidence is extremely strange.

The researchers believe that the fire might have been an accident, or caused by warfare. But far more likely is that it was actually a ceremonial fire, a kind of mass sacrifice, which marked a dramatic shift in the cultural and political life of Cahokia. It wasn't uncommon for the Mound Builders to burn the structures they built at the top

of mounds in ceremonial events. Often, they would include offerings like the ones found in the burned houses of Cahokia, especially corn kernels.

Pauketat and his fellow researchers also note that in the wake of the fire, Cahokia culture seemed to change in very specific ways. One very interesting shift is that people no longer built large, mansion-like homes that we believe were reserved for aristocrats and priests. These "mansions" were built in characteristic L and T shapes, and sometimes a ceremonial building would be circular. After the fire, all of the buildings and homes were square or rectangular. It's possible, suggest Pauketat and colleagues, that the fire was part of an uprising against an established group that had once occupied these more ostentatious homes.

Most archaeologists regard Cahokia as the "hearth" of Mississippian Culture and any transformative events there likely had ramifications throughout eastern North America. This includes Louisiana and other parts of the Lower Mississippi Valley.

PHASE II TESTING AT THE KITCHEN AND GARDEN AREAS OF THE EDWARD DOUGLASS WHITE HISTORIC SITE (16LF38)

By Malcolm K. Shuman, Harry Brignac, Jr., and Phillip K. Taylor
Surveys Research Associates Inc. (SURA)

In 2009 Surveys Research Associates Inc. (SURA) conducted a Phase II cultural resources project at the Edward Douglass White State Historic Site (16LF38), Lafourche Parish near Thibodaux.

The Edward Douglass White home, a National Historic Landmark, was the residence of Edward Douglass White (Sr.), Louisiana governor from 1835 to 1839, and his son, Edward Douglass White (Jr.), who served on the United States Supreme Court from 1894 to 1921 and was Chief Justice from 1910 to 1921.

The plantation dates from the late eighteenth century to the 1830s and is an example of the Creole-style cottage. It was later transformed into a Greek Revival house in the 1840s. For more information go to website www.lsm.crt.state.la.us/ed_white.htm.

The areas to be tested were to be developed for construction of a kitchen and the planting of a garden. These two areas are both located just behind (south of) the main house. The proposed kitchen area measures 16 feet (ft) by 30 ft (4.88 meters [m] by 9.14 m), and the proposed garden area measures 15 ft by 30 ft (4.57 m by 9.14 m).



Photograph of E.D. White Jr., the only Louisiana resident to ever serve on the U.S. Supreme Court



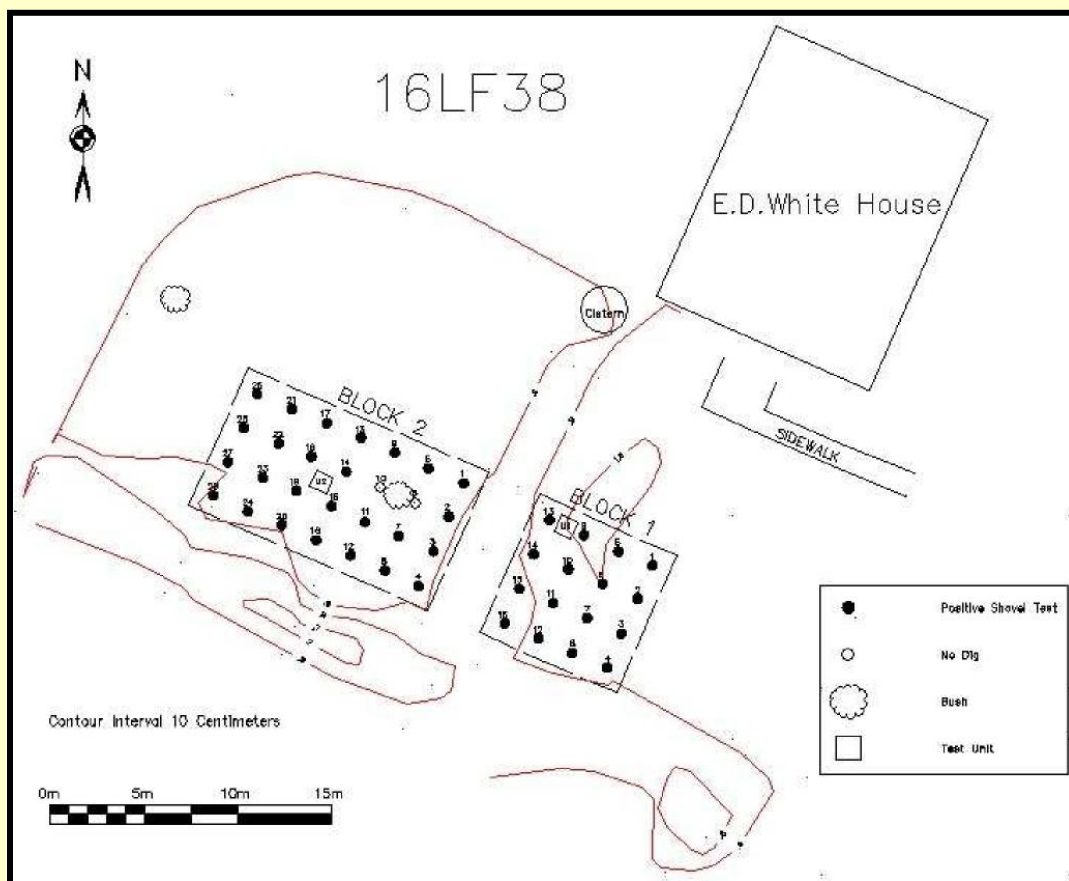
Photograph of the plantation home at the E.D. White State Historic Site

In general, the artifacts recovered during this project reinforced the experience of previous investigators, who recorded large numbers of 19th century materials, with an emphasis on the first half of that span. The following describes the classes of diagnostic artifacts encountered:

The vast majority of ceramics date to the antebellum period, which is precisely the time when the plantation, under the direction of the senior E. D. White, was in its prime. The quality of the ceramics suggests wares used for formal occasions, with 43% of the material being pearlware, most of which was decorated. As would be expected, however, whiteware is the most prevalent ceramic type, as it is today. Some of the whiteware was doubtless used in the post Civil War period, as is suggested by other artifacts recovered.

Continued from previous page

Plan of the archaeological testing done at the E.D. White House in preparation for changes being made to the state historic site



Several fragmentary bottles were discovered; all were from before the invention of the Owens Automatic Bottle Machine shortly after 1900 (SHA n.d.). The most interesting was a reconstructed ink bottle. This item, however, is relatively late, bearing the number “22,” which indicates manufacture by the Owens-Illinois Glass Company. This was probably used for Scheaffer’s ink, which began business in 1913 (SHA n.d.).

By an overwhelming percentage (91.21%), cut nails form the majority of nails recovered during the project. Cut nails were manufactured in great quantities from shortly after 1800 to the development of the Bessemer process in 1889 and small amounts continue to be made. A heavy compliment of cut nails, however, strongly suggests the 19th century (Edwards and Wells 1994). Wire nails were developed as a result of the Bessemer process and became the principal nail type after 1900.

Two ceramic, three brass and four glass buttons were recovered. The brass buttons are almost certainly 19th century in origin, although brass buttons were used, especially on military

uniforms, until well into the 20th century. The ceramic buttons are mid to late-19th century: in 1840, a machine was invented to manufacture Porcelain buttons from a dry china-clay powder (Epstein and Safro 1991:74). Glass buttons are somewhat later. Two-hole buttons are generally older. The four-hole button was introduced to men’s fashion around 1900 and soon became the standard for women’s blouses as well (Epstein and Safro 1991:135).

A total of 79 animal bones (chicken, pig and cow) and five mammalian teeth were found. Many of the bones had butcher marks. Chicken, pig and cow bones were also recovered by Wilkie et al. (1996:28) and by Kender (2000:69). The only surprise is that no fish bones were found, leading to the conclusion that meat was preferred on the White plantation and the owners had the means to indulge themselves.

The Porcelain doll is similar to a “Frozen Charlotte,” common in the mid- through late-19th-century. The “Frozen Charlotte” name derives from an 1840 song that told of a young woman, Charlotte, who froze to death while riding to a ball

Continued from previous page

in a sleigh with her beau. The doll from 16LF38, however, had moveable parts, which a true Frozen Charlotte does not (http://reviews.ebay.com/Frozen-Charlotte-And-Charlie-Antique-Doll-Buyers-Guide_W0Qqugi). Nevertheless, it seems likely that this doll would have dated from about the same time.

The bricks encountered were mostly fragmentary) and were probably hand-made. These types of bricks were common on 19th century plantations. This accords with Kender's results (Kender 2000:68).

Slate, probably from a roof, brass belt buckle parts, ceramic pipe stems, a ceramic bead and a number of other materials from the 19th century were found. These items are all consistent with what is known of the plantation and its dates of occupation.

There were few surprises, but some differences between the present work and that of earlier researchers should be pointed out. First, and most notably, this project found no creamware, though small amounts had been reported by Wilkie et al. (1996) and a large amount by Kender (2000). On the other hand, the current excavations produced small numbers of a potentially even older ceramic type, specifically, Redware, which was not recorded by Kender (2000) but was found in small amounts by Wilkie et al. (1996:40). Interestingly, though Wilkie et al. (1996) and Kender (2000) list Ironstone wares, none were found in the current excavations. These differences are probably accountable by sampling error. Also, no brick or structural features, such as those recorded by Kender (2000), were observed. This probably reflects the fact that the area tested during the present project was too far behind the big house for any construction to have occurred.

This work was made possible by funding from the Friends of the Edward Douglass White Historic Site and the Louisiana State Museum. The authors wish to thank Sherry Wagener, Malcolm Hodnett, and Herb Adams for their help during the course of the undertaking.

REFERENCES CITED

Epstein, Diana and Millicent Safro
1991 *Buttons*. Harry N. Abrams Publishing Company, New York.



Photograph of a "Frozen Charlotte" doll made of porcelain from (16LF8). This artifact dates from the mid to late 1800s

- Edwards, Jay D. and Tom Wells
1994 *Historic Louisiana Nails: Aids to the Dating of Old Buildings*. Fred B. Kniffen Cultural Resources Laboratory Monograph No. 2. School of Geoscience, Louisiana State University, Baton Rouge.
- Kender, Carolyn M.
2000 *Analysis of Ceramics from the Kitchen of the Edward Douglass White State Historic Site (16LF38)*. Unpublished M.A. thesis, Dept. of Geography & Anthropology, Louisiana State University, Baton Rouge.
- SHA (Society for Historical Archaeology)
n.d. *Bottles*.
- Wilkie, Laurie A., Paul Farnsworth
1995 *Archaeological Testing at the E.D. White State Historic Site, Lafourche Parish, Louisiana*. Unpublished report submitted to the Louisiana Division of Archaeology.
- Wilkie, Laurie, Paul Farnsworth & Stephen P. Bull
1996 *1995 Archaeological Testing at the E.D. White State Historic Site, Lafourche Parish, Louisiana*. Unpublished report submitted to the Louisiana Division of Archaeology, Baton Rouge.

The 2013 Excavations at Drake's Salt Works

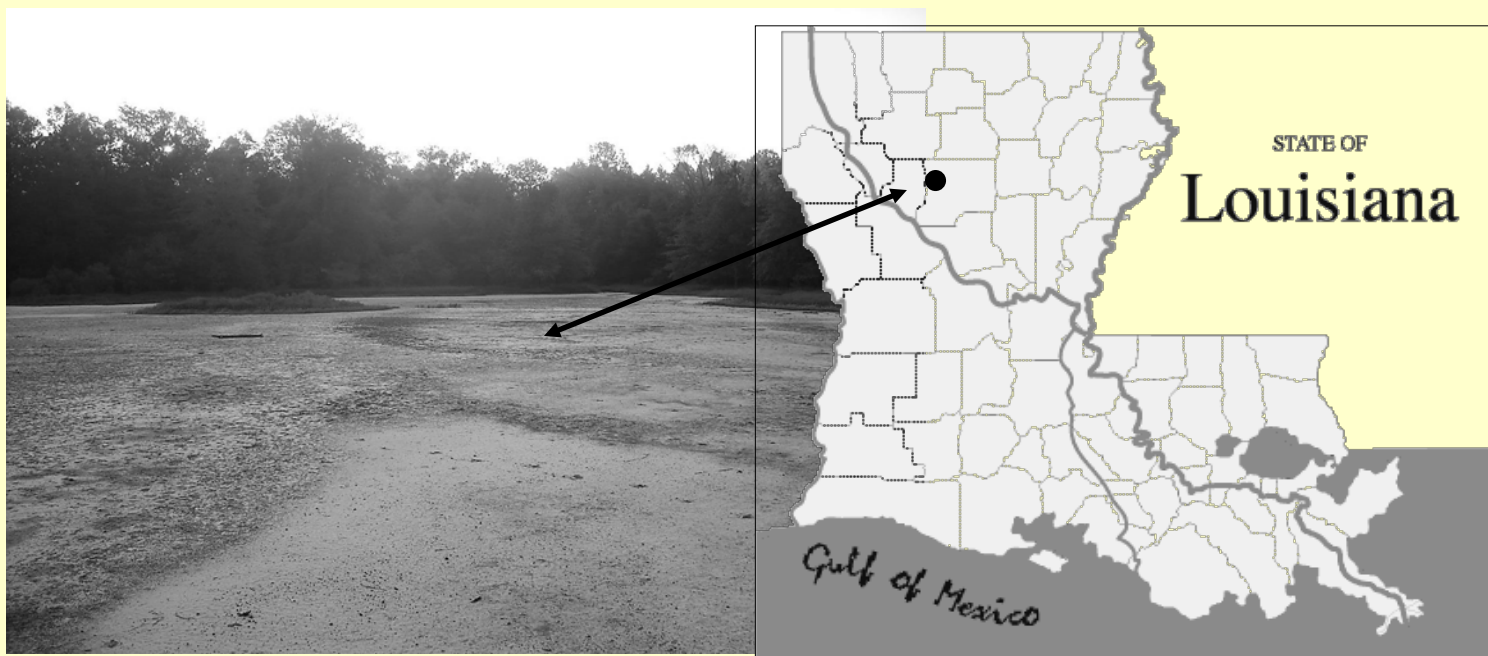
By Paul N. Eubanks-University of Alabama

In the fall of 2013, the United States Forest Service and the University of Alabama conducted archaeological excavations at the Upper (16WN30) and Little (16NA11) salt licks at the Drake's Salt Works Site Complex near Goldonna, LA. These two salt licks are less than a kilometer apart, and both were used by the Caddo Indians for salt production during the protohistoric and early historic periods. According to the historic record, the Caddo at these sites may have made hundreds of pounds of salt each year, and most of this salt was probably traded to the nearby French and to other groups without direct access to this commodity.

Among the four test units excavated during the 2013 field season, one was placed into a mound of salt production debris (including potsherds, burned earth, and charcoal) at the Little Lick salt flat. From this single test unit, we recovered several thousand potsherds and more than a dozen large pieces of charcoal that can be used for radiocarbon dating. Many of the recovered sherds were also quite large and could be reassembled into whole or partial bowls. As with most salt production sites in the Southeast, the overwhelming majority of the recovered pottery was plain.

Also contained within the mound of salt production debris were deposits of relatively pure gray clay. This clay can be found in areas surrounding the Little Lick, but it is almost always mixed with large quantities of sand thus making it unsuitable for pottery production. However, if the Caddo were collecting dried salt from the nearby sandy salt flat, then the salt would have needed to be filtered with water in order for it to separate from the sand. In doing so, these salt makers may have also filtered out the clay, which could then be used to make pottery for heating and evaporating brine. In addition, deposits of oyster shells, which would have been used to temper the salt production vessels, were also found scattered among the deposits of gray clay within this mound.

Elevated areas away from the flood-prone salt flats were also surface collected and shovel tested in an attempt to identify potential living areas that would have been used by the salt makers. Two such candidates were identified during this survey. Test units in these locations revealed a higher proportion of lithic and faunal materials compared to the salt flats thus hinting at the possibility that the salt makers may have had a nearby camp or living site. Plans to revisit these areas in the summer of 2014 are currently in the works.



The Little Lick Salt Flat at Drake's Salt Works

LOUISIANA ARCHAEOLOGY IN THE MEDIA

Archaeologists search Bayou Teche for early Acadian roots

By Richard Burgess, rburgess@theadvocate.com

Baton Rouge Morning Advocate, December 27, 2013

LAFAYETTE — Fieldwork could begin as early as June on an archaeology project to find some of the earliest settlements of the Acadian exiles who made their way to Louisiana.

The current focus is along Bayou Teche near Loreauville in Iberia Parish, where Cajun folk hero Joseph “Beausoleil” Broussard helped lead a group in 1765 after unsuccessfully battling British efforts to remove the French Acadians from what is now Nova Scotia.

More than 30 of them died within months of their arrival, likely from disease, leaving few clues about where or how they lived or even where they were buried. “Very little is known about them. We don’t know what kind of material culture they brought with them,” said Mark Rees, a University of Louisiana at Lafayette archaeologist and anthropologist.

A fundraising effort began this year to raise money for the research effort, dubbed “The New Acadia Project.” The project got a boost this month with a \$25,000 donation from the Gustaf Westfeldt McIlhenny Family Foundation of New Orleans, which comes on top of about \$10,000 in other donations, said Cheryl Broussard Perret, a descendant of the early Broussard settlers who is helping to seek private funds for the research.

She said the goal is to raise at least \$90,000 through donations — money that could be used to match additional funding being sought from other sources, including a request for \$290,000 from the Louisiana Board of Regents.

While the fundraising continues, Rees said preparations are being made for preliminary archaeology work in June. “We have identified several places of interest. We have some leads,” he said.

The work planned for this summer is digging at promising sites to see if any objects can be found from the time period when the early Acadians arrived, such as bits of pottery or other ceramic items, Rees said.

Researchers might also use ground-penetrating radar and other sensing techniques to

to locate items such as a chimney, a fire pit, post holes or a grave — indications of a settlement.

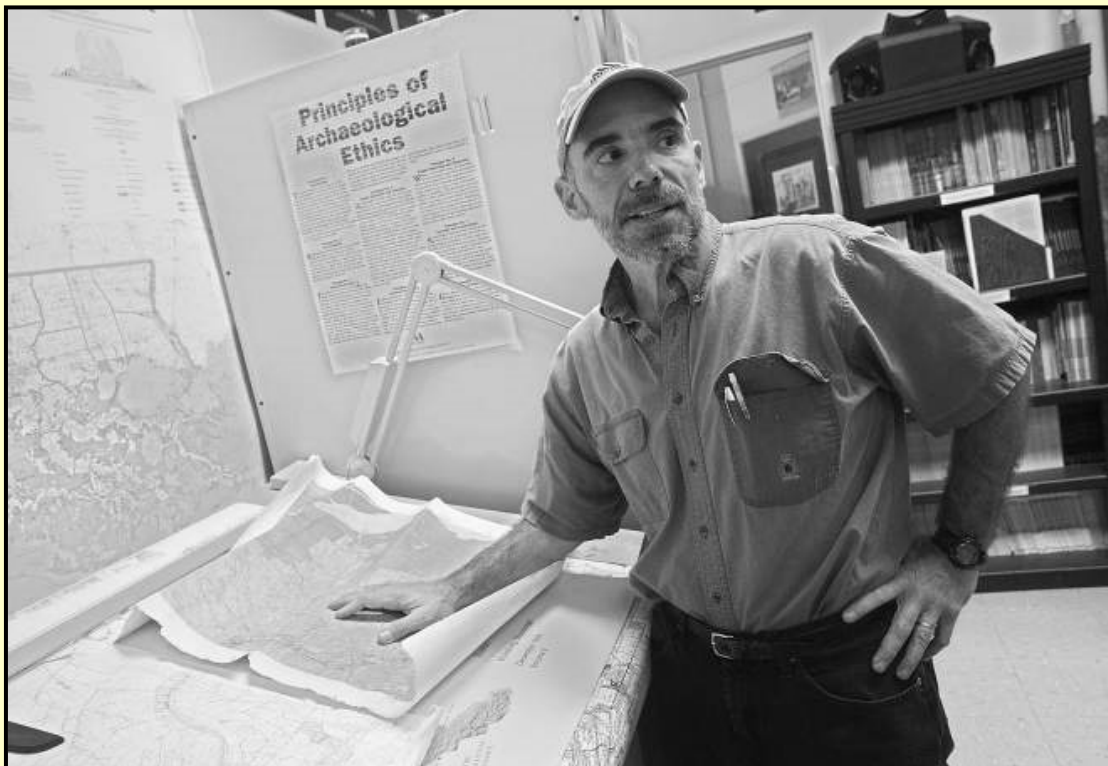
Rees said similar archaeology work has already been done on Acadian settlements in other areas, notably Nova Scotia and states along the eastern seaboard where some Acadians settled. “A lot of research has been done on Acadians in other areas,” he said. “We haven’t done much here, but we are hoping to change that.”

Perret said the long-term goal, assuming the early settlements can be found, is to capitalize on the historical significance of the sites to boost cultural tourism in an area of the state where Cajun culture is already a big draw. “This will be an asset to Acadiana,” she said.

For more information on the project, visit www.AcadianMuseum.com/New_Acadia_Project.html.



Advocate map
Location of Loreauville on Bayou Teche in Iberia Parish. Graphic from Baton Rouge Morning Advocate.



Photos by Bryan Tuck from July 13, 2013 article in Baton Rouge Morning Advocate. Above: Dr. Mark Rees discussing the Nouvelle Acadie Projet in his office in Mouton Hall at the University of Louisiana-Lafayette. Below: Rees shows ceramic and glass artifacts recovered from near Loreauville.



State warehouse seeks funds for archaeological artifacts

By MICHELLE MILLHOLLON

mmillhollon@theadvocate.com

December 27, 2013, Baton Rouge Morning Advocate

Tucked into a warehouse off River Road are boxes holding what remains of a Spanish frigate that foundered off Cameron Parish nearly 250 years ago.

The El Nuevo Constante — carrying gold, silver, goat skins and a box of chocolate — collided with a hurricane in 1766 and got mired in mud miles from shore. The crew and passengers abandoned ship in a rowboat, but later returned to salvage what they could. Archaeologists found the shipwreck in 1979 and brought broken dishes, ceramic bowls, buckles and ballast stones to shore.

An archaeological curation fund is supposed to accumulate dollars for an expansion of the state warehouse where the wreck and other artifacts are stored.

The federal government and businesses pay the state a storage fee. The fee is supposed to be used to pay an employee to work on collections, stabilize the artifacts and buy more shelving and file cabinets.

With the strain on state finances, however, legislators have been raiding the fund to help balance the state's operating budget. In a two-year span, a grab was made for \$101,424 from the fund, reducing the collected dollars down to roughly \$20,000.

The artifacts are stored in a warehouse that serves as the ultimate attic space for whatever Louisiana archaeologists dig up or send divers down to retrieve. It's a hoarder's paradise as well as a library for future researchers interested in shipwrecks or in artifacts that date from the 1700s to the 1900s.

The cavernous warehouse, an upgrade from the flood-prone basement that the state once used, is rapidly running out of room for archaeologists' discoveries. Remnants found during pipeline and building construction as well as shipwrecks rest in boxes on collapsible shelving.

The warehouse holds 4,000 boxes — containing glass, pottery, animal bones, charcoal and other bits and pieces — and has shelf space for only 400 more.



Advocate staff photo by Bill Feig-State Archaeologist, Charles "Chip" McGimsey talks about the state of Louisianan running out of places to store artifacts, largely because legislators have taken storage fees that could be used to fund an expansion. Artifacts that have been catalogued and stored are in the moveable shelves on the left, items still awaiting processing are in boxes on shelves, right.

State archaeologist Charles "Chip" McGimsey said he can barely meet payroll for the warehouse's single worker, let alone buy additional shelves for artifacts from Louisiana's past. The fund generally generates \$40,000 a year. The built-up surplus now is virtually gone.

"It's putting us in a difficult situation because we don't have the money that accumulated in the good years," McGimsey said.

At the same time, Jill Yakubik, president and owner of the New Orleans-based Earth Search Inc., is washing and sorting artifacts from a pre-Civil War neighborhood that once sprawled across 12 city blocks in an area bounded by South Claiborne Avenue, Canal Street, Galvez Street and Tulane Avenue.

The state hired her to excavate the land that soon will be occupied by a new medical center complex. Maps and census records tell the area's history. It became a neighborhood in the 1830s. Businesses, including a barrel maker, located there. A

Continued from previous page

school was built, along with an 8- to 9-foot privy in the days before plumbing.

Yakubik found a sword, slate pencils, children's toys, tools, jewelry fragments and bones from long-ago dinners. "Pretty much everything you would expect if you didn't have municipal

garbage pickup," she said. Her finds fill nearly 1,000 boxes, far too many for the state's remaining storage space. The collection will have to be culled. "It's heartbreaking," Yakubik said. "You know this stuff, by rights, should be curated so other people can access it and utilize it. We're just going to have to start making hard decisions."

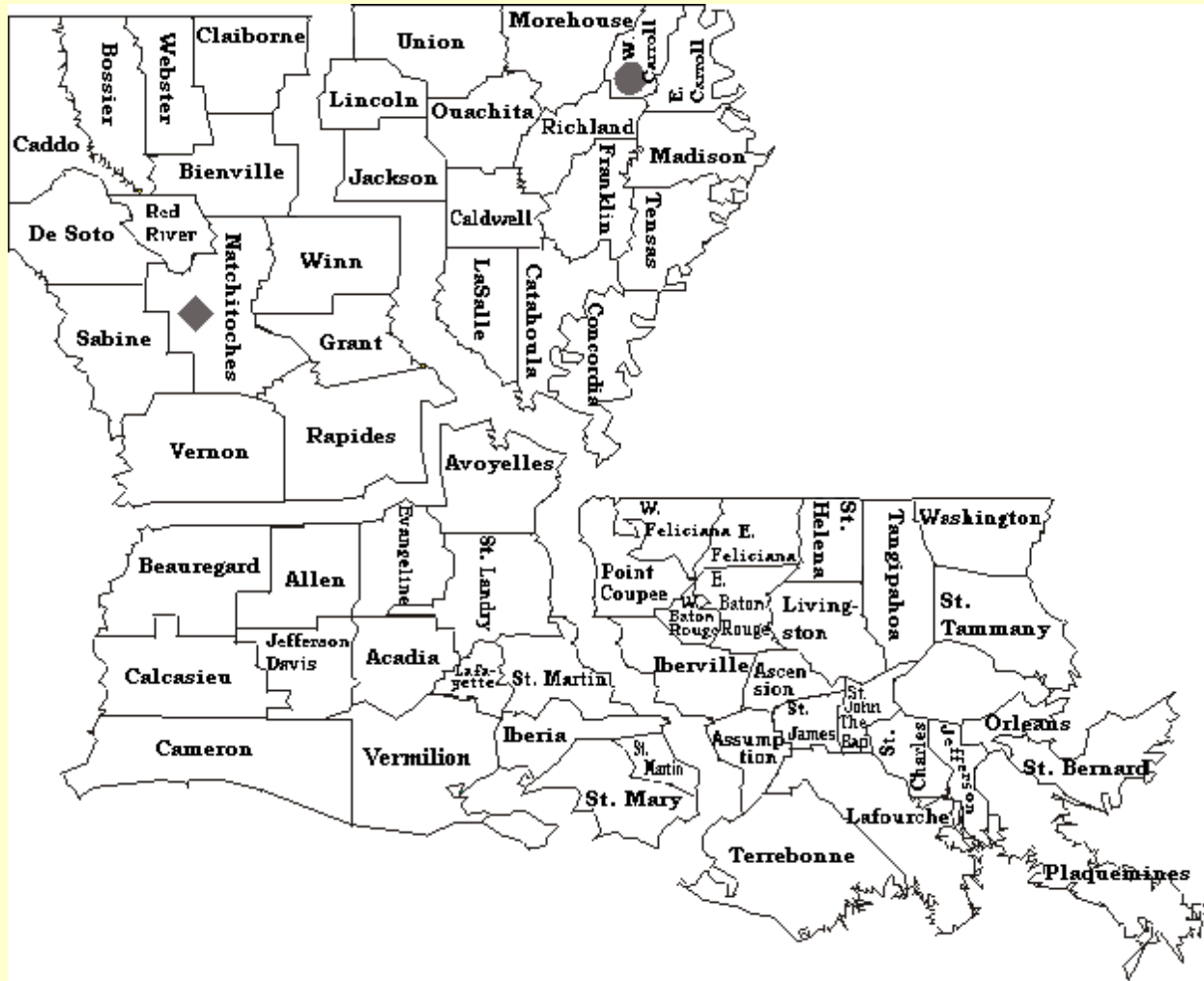


Advocate staff photo by Bill Feig -- State archaeologist Charles "Chip" McGimsey holds an artifact from the El Nuevo Constante, which sank near what is now Cameron Parish in 1766. The remains of the shipwreck were discovered in 1979. A number of artifacts, including buckles, ballast stones and dishes, were brought to shore. The state of Louisiana is rapidly running out of places to store artifacts, largely because legislators have taken storage fees that could be used to fund an expansion



Google Earth street view of the building at 1835 North Third St, River Road, Baton Rouge. The Division of Archaeology's curation facility occupies the second floor of the structure, while the Capital Area Police Department's headquarters are on the first floor. This image was not part of the original article in the Baton Rouge Morning Advocate.

REGIONAL ARCHAEOLOGY NEWS



Northwest Region

Jeff Girard

Regional Archaeology Program

Department of Social Sciences

Northwestern State University

Natchitoches, LA 71497

(318) 357-5471

girardj@nsula.edu

Poverty Point Station Archaeologist

Diana Greenlee

Poverty Point State Historic Site

P.O. Box 276, Epps, LA 71237.

(318) 926-3314

greenlee@ulm.edu

What I Learned During My Time in the Louisiana Regional Archaeology Program . . .

By Robert C. Connolly, former Station Archaeologist at Poverty Point

The last Newsletter of the Louisiana Archaeological Society had bad news. Louisiana's Regional Station Archaeology Program is now effectively disbanded because of state budget cuts. There remains one regional station in Northwest Louisiana along with the Poverty Point Station Archaeologist. As Poverty Point was recently nominated as a World Heritage Site of UNESCO, hopefully the state will continue to fund the Station Archaeology Program at this premier earthwork complex in the New World.

From 1996 – 2003, during my seven years as the Station Archaeologist at Poverty Point, under the direction of the late State Archaeologist Tom Eubanks and the current Manager of the Outreach, Regional, and Station Archaeology program Nancy Hawkins, my commitment to public outreach was formed. Both Tom and Nancy's vision of public engagement never wavered. In fact, it was under the 20 plus years of leadership by Nancy Hawkins that the Louisiana's Regional program helped set the standard on which other state archaeology programs were built.

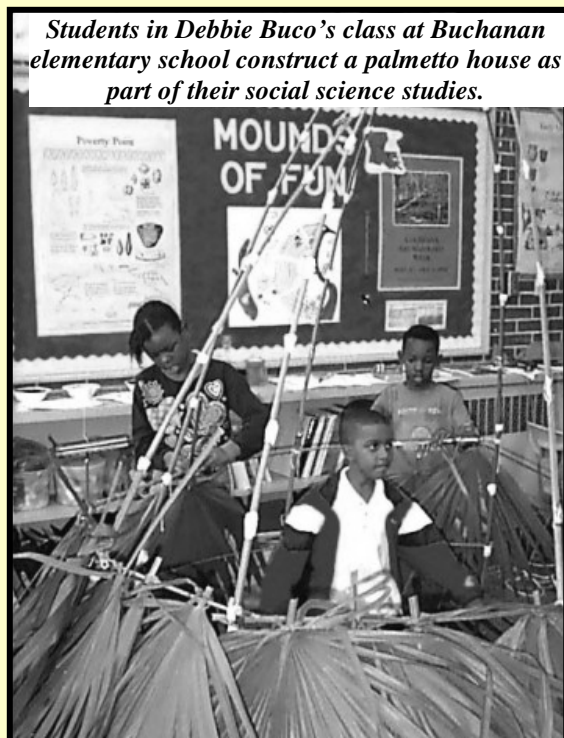
During my tenure as the Poverty Point Station Archaeologist, I was first able to respond to the challenge I received in my first field school experience: to act as a public servant who performed tasks that were relevant to those whose tax dollars paid my salary.

One of my first experiences in public outreach in Louisiana archaeology was with Debbie Buco, a very enthusiastic Talented and Gifted teacher from Baton Rouge. Nancy put me in touch with Debbie who was using the archaeology of Poverty Point to teach natural sciences, humanities, and social sciences to her second through fifth grade students. After my first few conversations with Debbie, I was not certain how I could fit into her work, but I knew I wanted to tap into her enthusiasm. For a period of several months in 1997 I had a regular email exchange with her students answering questions about the prehistoric life at Poverty Point. What did the Indians eat? What did the kids do for fun? What were there houses like? As we went back and forth via email, I learned valuable lessons on how to use archaeology to engage with the students.

Toward the end of the 1997 school year, I made the trip to Debbie's classroom at Buchanan Elementary in a clearly underserved section of Baton Rouge. When I walked into the classroom, I was humbled by the enthusiasm the students had for a visit from the archaeologist who had been writing to them about Poverty

Point and drove all the way to their school for a visit. After climbing inside the palmetto hut they built inside their classroom along with at least three of the students, we began a conversation in the less cramped setting outside the structure. I asked the question: "so, if you built this house outside and came back in a hundred years after it had rotted away, how could you tell it was ever there?" To which there was silence at first and then a response: "by the rotted sticks . . . no the postmolds . . . yeah, by the postmolds" the students concluded in unison. We talked about that some, then I held up a bladelet and asked: "Do you know what this is?" and I expected responses like "a rock" or at best a knife or tool, but the students responded immediately in unison with the same confidence that they knew $2 + 2 = 4$: "A microlith!"

Though impressive, it was not that the second through fifth grade students had learned to memorize the names of artifact types they had only seen in pictures or that they could understand formation processes better than some undergraduates in Introduction to Archaeology classes I have taught. Rather, archaeology had set the students on fire in learning to read, conduct scientific experiences and more. Ultimately Debbie Buco produced the volume *Poverty Point Expeditions*, a workbook that uses archeology to teach physics, scientific experimentation, story-telling, and more. Nancy saw to it that the Louisiana Division of Archaeology produced thousands of copies of the book for distribution to teachers throughout the state. A streamlined version of the book is available online from the website of the Louisiana Division of Archaeology.



Continued from previous page

Nancy organized Archaeology Week (later Month) in Louisiana and during my time at Poverty Point it was always a big deal. I enjoyed the opportunity to take the archaeology show on the road as it were for up to two weeks every year. My *m.o.* was to arrange for a school presentation during the day and then a public presentation at a library or other civic center in the evening. I have spoken in a good number of the small Louisiana towns that might have only one traffic light and a small library.

I learned a lot about public outreach from the library meetings in the small towns where farmers and surface collectors would come to show what they had plowed up. During these presentations, I came to appreciate the interest avocational archaeologists had not just in their “arrowheads” but for their true respect and interest in the prehistory of the fields they plowed each year. I spoke several times at the public library in Belzoni, Mississippi, just down the road from the Jaketown site. In one talk I discussed how Carl Alexander, an avocational archaeologist who collected at the Poverty Point site, would label where he had picked up many of his artifacts. I noted that because Carl recorded the provenience of his collections, today we could better understand how the different ridges and sectors of the Poverty Point site were the locations of different types of activities in prehistory.

I showed how a large percentage of the whole projectile points were found in the north end of the site, perforators on the southwest sector of ridges, and the ubiquitous clay cooking balls had their greatest densities along the edges of the Bayou Macon. I then asked: “Do you all see a similar pattern of artifact types in the different areas where you collect around the Jaketown site?” And the collectors nodded in agreement and began to talk about the clusters. The next year when I spoke at the Belzoni library a couple of the collectors reported they had begun to take note of where they were recovering different types of artifacts. Today there is a small museum in Belzoni where some collectors have donated portions of their collections from the Jaketown site.

Back at Poverty Point, for school group visits during Archaeology Month, I developed a 20-minute program for when a couple thousand school children jammed through the site each day over a three-day period. My assigned station was to show how archaeologists used artifacts to interpret prehistory I talked about how archaeologists primarily examine the garbage left by the people who lived at the site. To illustrate that process I would take a made bucket of dirt and artifacts and dump the content through a set of large to small nested geologic sieves. I would then invite the students to pick out a piece of garbage from the sieves moving from large to small, and guess what the garbage represented. In so doing, we covered everything from trade and exchange based on raw material types, subsistence from faunal remains, tool manufacture, and more. For the last station in the 20 minute presentation I would scoop some light fraction (the stuff that rises to the top) from a soil sample placed in a barrel of water. I said that the bits of seeds and bone were: “not ‘like’ what the people were eating at Poverty Point nearly 4000 years ago, but the very food the people were eating.”

Without fail for seven years, even the most restless student would grow quiet and strain to see those bits of prehistoric garbage. I could ramble on with many more examples of the lessons I learned in applied archaeology and public outreach during my time as a part of Louisiana’s Regional Archaeology Program. I am in debt to the Louisiana Division of Archaeology for giving me the opportunity to learn these skills. Though the Regional Archaeology Program may be gone, the 20 years of work by Tom Eubanks, Nancy Hawkins, and all of my archaeological colleagues in the state will surely result in new and innovative directions for the preservation and presentation of the rich cultural heritage of Louisiana.

The front of the Jaketown Museum in Belzoni, Mississippi, the closest town to the Jaketown archaeology site in the Yazoo Delta region



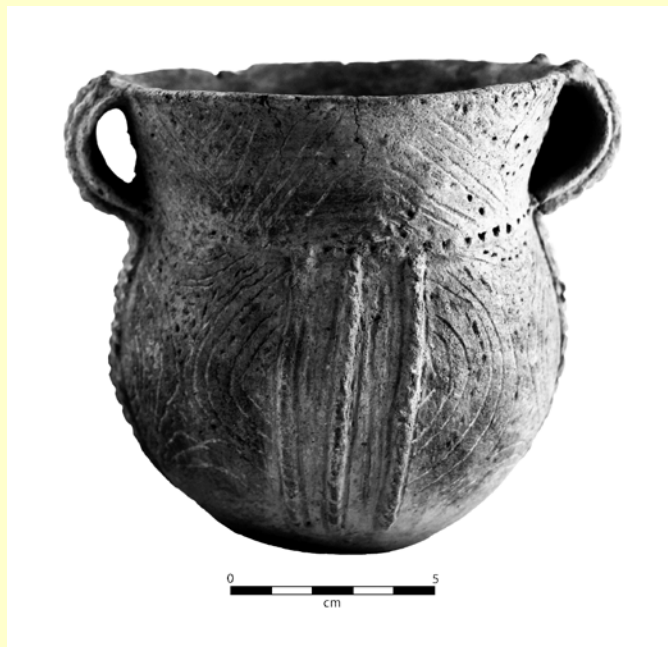
The W.W. Todd Collection at the Lincoln Parish Museum

By Jeff Girard, NW Regional Archaeologist

The Lincoln Parish Museum houses a collection of pottery and stone tools that was acquired in the early 20th century by Mr. W.W. Todd of Gibsland, Louisiana. The collection was stored away for many years, but has recently been put on temporary display and plans are underway for a permanent exhibit. Museum director Margaret Ann Emery and the museum board recently invited me to examine the collection and photograph the artifacts.

The circumstances regarding how the collection was acquired are not known. Some of the items may have come from north Louisiana, but others are from Arkansas, and at least one item (a chunky stone) was marked "Fayette Co., Illinois." Dr. Clarence H. Webb was aware of the collection and illustrated several Clovis points in a paper titled "Evidences of Pre-Pottery Cultures in Louisiana" that was published in *American Antiquity* (1948, Vol. 13, No. 3, pp. 227-232). Unfortunately, although there are numerous dart and arrow points in the existing collection, none of the Clovis points illustrated by Webb are present.

A total of 33 ceramic vessels are in the collection. Illustrated here are a few of the specimens. Most of them likely originated in the Caddo Area, but a few are from the Lower Mississippi Valley and one black-on-white painted vessel from the Four Corners region.



Above: Haley Complicated Incised jar

Below: Glassell Engraved bowl



The Lincoln Parish Museum is located at 609 North Vienna Street in Ruston, Louisiana in the Kidd-Davis House, built in 1886. The museum is open Tuesday through Friday, 10 am to 4 pm and on weekends by appointment (318-251-0018).

Continued from previous page



Applique effigy bottle



Engraved bowl



Hudson Engraved bowl



Engraved seed jar

Continued from previous page



Incised Jar (Cowhide Stamped or Foster Trailed Incised?)



Keno Trailed jar



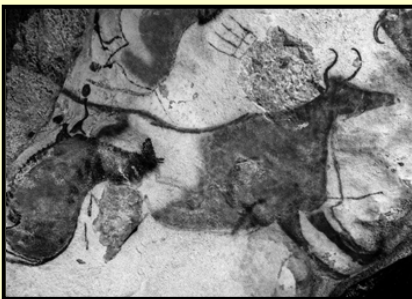
*Of special interest in Mr. Todd's collection is a pair of beaded leather moccasins with a note that states they were "Given to W. W. Todd by a Native American chief during the Shreveport Centennial." The "chief" likely was a member of the Caddo Nation (probably Chairman Charles Adams) who was part of the delegation that attended the Shreveport Centennial celebration in 1935 (see the front cover of *Archaeology of Louisiana*, edited by Mark Rees, LSU Press, 2010).*

MEETINGS, FIELDWORK, EXHIBITS, WEBSITES, ETC.



40th Annual Meeting
Louisiana Archaeological Society
Northwestern State University
Natchitoches, LA
February 7-9, 2014
(See pages 2-4 of this newsletter)

2014 Annual Meeting
Jackson, MS
March 7 - 8, 2014
Meeting Venue/Hotel:
Hilton-1001 East County Line Road
Jackson, MS 39211
601-957-2800



Scenes from the Stone Age:
The Cave Paintings of Lascaux
October 18, 2013 – March 23, 2014
Houston Museum of Natural Science

Caddo Conference, March 27-29, 2014
Ornelas Activity Center, 3402 Old Omen Rd.
University of Texas at Tyler
Please send paper titles and abstracts by January 31,
2014 to Dr. Timothy K. Perttula, tkp4747@aol.com.
See www.caddoconference.org for more
information.



SAA 79th Annual Meeting
Austin, Texas
April 23-27, 2014
www.saa.org

Information for Subscribers

The Newsletter of the Louisiana Archeological Society is published three times a year for the society. Subscription is by membership in the Louisiana Archeological Society (LAS). Annual membership dues are \$20 for individuals, libraries, and institutions, \$5.00 for associates (relatives of individual members), and \$12 for students. Life membership dues are \$200 for individuals. Sustaining membership dues for individuals or institutions are \$300. In addition to the newsletter, members receive one issue per year of the LAS bulletin *Louisiana Archaeology*. Membership requests, subscription dues, changes of address, and back issue orders should be directed to the Treasurer. Unless otherwise indicated, opinions stated herein are those of the editor and do not necessarily reflect society policy.

Information for Contributors

Send all notes, news, graphics and other communication to:

Dennis Jones, LAS Editor

1801 Ormandy Dr. Baton Rouge, LA 70806

archaeoman.jones@gmail.com

Articles should be submitted by email, preferably in Microsoft Word. Digital images are encouraged. Please send in TIF, JPG or Word format. Contact editor via email with all questions.

LAS Web Site

www.laarchaeology.org

LAS Officers

President: Brad Lafitte, Mansfield, LA

Vice President: Mark Richard, Lafayette, LA

Secretary: Rachel Watson, Baton Rouge, LA

Treasurer: Julie Doucet, Baton Rouge, LA

Editor: Dennis Jones, Baton Rouge, LA

Webmaster: Carlos Perez, Baton Rouge, LA

All officers can be contacted through the LAS website



Editor - Louisiana Archaeological Society
1801 Ormandy Dr.
Baton Rouge, LA 70808