



Louisiana Archaeological Society NEWSLETTER

RICHARD A. WEINSTEIN, Newsletter Editor

COASTAL ENVIRONMENTS, INC.,

BATON ROUGE, LOUISIANA 70802

Volume 21, No. 2

Summer 1994

FROM THE EDITOR

As the membership can see, this is a relatively short newsletter. I waited about as long as I could before going to press, with the hope that I would receive a few articles and short notes. However, only one brief article, one short note, and an update on the contents of L. A. S. bulletins were submitted. Perhaps, now that summer vacation is over, folks will send in stories and/or articles concerning their summer exploits, and the next issue will contain a bit more information.

Rich Weinstein
Newsletter Editor

UPCOMING 1994 L. A. S. FIELD PROJECT

The Louisiana Archaeological Society is planning to conduct another field project at the Marksville site in 1994. Dr. Carl Kuttruff and Dennis Jones will direct the project again this year. The work will be centered on Enclosure B and Mound 7 at the site (Figure 1). This part of the Marksville site has received little attention since it was first reported in the scientific literature in 1927.

The project will consist of mapping, soil probing, test excavations, and profiling. There will also be lectures about Louisiana archaeology and a tour of the Marksville State Commemorative Area, which contains much, but not all, of the Marksville site.

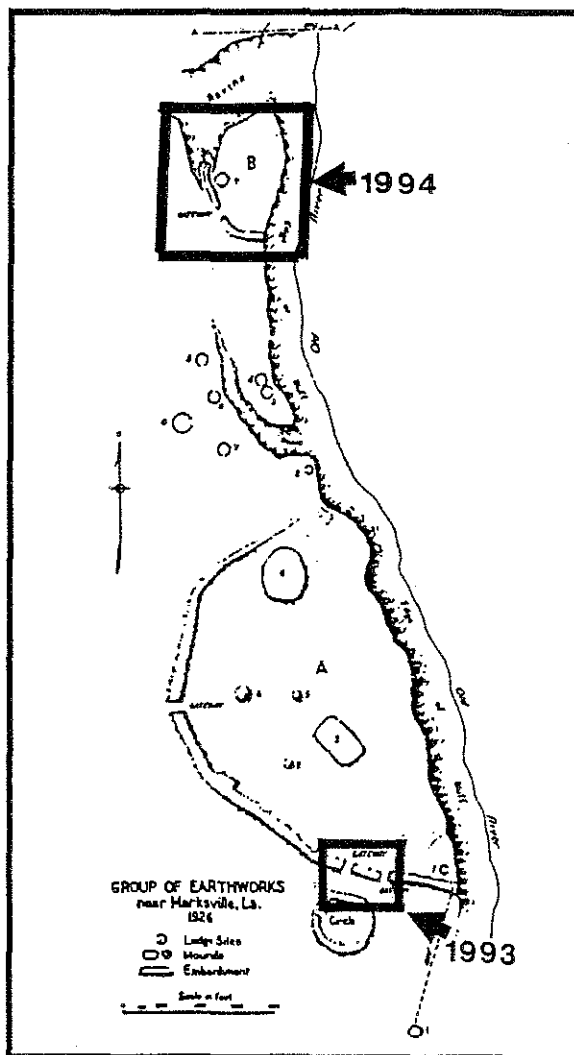


Figure 1. A portion of Fowke's 1926 map of the Marksville site. Boxes indicate 1993 and 1994 project areas.

The project will be conducted from October 15 through October 23. This time period includes two weekends which should allow

maximum participation by L. A. S. members. Food and lodging will be provided again this year, and there will be a registration fee of \$20.00. This fee allows you to participate as much or as little as you wish. The project is open only to current members of the L. A. S., so if you or someone you know is interested, but not a dues-paying member, you or they need to join the society.

A special announcement and registration form will be mailed out to L. A. S. members in early October, and will include additional information. Meanwhile, if you have any questions, please call Dennis Jones at (504) 388-3313.

UPDATE ON THE L. A. S. ARCHIVES

Linda Jackson, L. A. S. President, reports that Ray Fredlund of the Baton Rouge Chapter has agreed to serve as head of an Archive Committee that will be responsible for organizing and cataloguing L. A. S. archival material that eventually will be housed at the Louisiana Division of Archaeology.

If you have L. A. S. material that you feel should be included in the archive, then please contact Ray at:

2800 July St., #36
Baton Rouge, LA 70808
Tel.: (504) 336-0106

UPDATE ON THE L. A. S. SPEAKERS BUREAU

As mentioned in the last newsletter, the L. A. S. plans to institute a Speakers Bureau consisting of those individuals who are willing to attend local chapter meetings to present papers, slide shows, discuss their latest finds, etc. The L. A. S. will then reimburse local chapters up to \$100.00 per year for travel expenses incurred by their speakers.

Unfortunately, the Speakers Bureau has gotten off to a relatively slow start. Donita

Burton, L. A. S. Secretary, reports that only two individuals have volunteered to participate in the bureau. Obviously, we need more speakers if the bureau is to become a viable part of the society. So, if you have been thinking about submitting your name, but are one of the many who has yet to do so, please provide Donita with the topic(s) that you are willing to present, along with any travel or time restrictions that you might have. The Executive Committee thanks you.

L. A. S. YUCATAN EXPEDITION

There are still a few of slots open for the L. A. S. tour to the Yucatan, February 27 to March 5, 1995. If you have been contemplating joining the expedition, but have not done so yet, then please submit you application form and deposit as soon as possible. Consult the last issue of the newsletter for details, or contact "Marcus" at UNIGLOBE Hibernia Travel: outside New Orleans at 1-800-486-7578; in New Orleans at 891-8800.

LELAND W. PATTERSON RECEIVES CRABTREE AWARD

Long-time L. A. S. member and contributor to the L. A. S. Bulletin and Newsletter, Leland W. Patterson of Houston, Texas, was the 1994 recipient of the Crabtree Award sponsored by the Society for American Archaeology. Patterson joins Dr. Clarence H. Webb, recipient of the first Crabtree Award in 1985, as the second L. A. S. member to be so honored. The Crabtree Award is presented by the SAA to avocational archaeologists for "significant contributions to scientific archaeology in the Americas."

Lee recently retired from a career as chemical engineer with Tenneco. His contributions to archaeology stem from his prolific writing (over 300 articles in local and national journals) in the field of lithics, and his promotion of amateur/professional relationships. Congratulations to Leland Patterson.

**MINUTES OF THE L. A. S.
EXECUTIVE COMMITTEE MEETING**

**Piccadilly Restaurant
Alexandria, Louisiana
April 16, 1994**

**Reported by
Donita Burton
L. A. S. Secretary**

The L. A. S. Executive Committee Meeting was held at the Piccadilly Restaurant in Alexandria, Louisiana. Members present were:

Linda Jackson — L. A. S. President
Donita Burton — L. A. S. Secretary
Rich Weinstein — L. A. S. Newsletter Editor
Robert Neuman — L. A. S. Bulletin Editor
Harold Brice — Northwest Chapter President
Donald Duncan — Northwest Chapter Representative
Ida Dodge — Central Chapter Representative (Alt.)
John Guy — L. A. S. At-Large Representative
Ellis Denning — Central Chapter
Gayle Denning — Central Chapter
Newt Jackson — Delta Chapter

Linda Jackson called the meeting to order. Donita Burton read the minutes of the last Executive Committee Meeting. Ellis Denning made a correction to the minutes concerning the name of the museum referred to as the "Alexandria Museum." The minutes were changed to read the "Pineville Museum." With no further corrections or additions, Bob Neuman made the motion to accept the minutes as read. Newt Jackson seconded. Motion carried.

Reports

Due to the absence of David Jeane, Newt Jackson read the treasury report. David did not send in a membership report. Donita Burton made a motion to accept the treasury

report as read. Linda Jackson seconded. Motion carried.

Rich Weinstein presented the L. A. S. Newsletter report. The next issue of the newsletter (Vol. 21, No. 1) should be mailed out by the end of April or the beginning of May. Rich has received three or four articles which may be published in the newsletter.

Bob Neuman gave an L. A. S. Bulletin update. Bulletin No. 16 (for 1989) should be out within the next couple of months. Bob has sent the galleys to the authors for their approval. Bob hopes to have another bulletin ready by the end of the year.

The quality of the photographs in the last bulletin (No. 20 for 1993) was brought up for discussion. The photos did not seem as clear as in previous bulletins. Bob provided an explanation regarding the quality of the photos, and reassured the Executive Committee that there would not be similar problems with future issues.

Bob also brought to the Committee's attention the fact that he was having difficulty with a particular article that already had been sent out for review. Rich made the motion that the article be sent to another, independent reviewer. The new reviewer will examine both the article and any comments received from previous reviewers. He then will decide whether the article is worthy of publication, subject to changes requested by the previous reviewers. Newt Jackson seconded. Motion carried.

Old Business

Linda Jackson opened a discussion on ways to revive lost chapters (i.e., Bogalusa, New Iberia, Lafayette, Northlake, and Lake Charles). As one option for reviving interest, Linda suggested forming a Speakers Bureau comprised of people who would be willing to travel to various chapters to present lectures, talks, and/or slide shows. The list of speakers would be published in the L. A. S. Newsletter and made available to L. A. S. chapters. Rich Weinstein then presented a motion to ac-

cept Linda's suggestion and to form an L. A. S. Speakers Bureau:

MOTION: It is moved that a Speakers Bureau be formed and that the names of its member speakers be made available to active L. A. S. chapters. The L. A. S. will make \$100.00 available, per year, for each qualifying chapter to serve as reimbursement for any travel expenses incurred by their speakers during the year. Qualifying chapters have to meet the requirements of a local chapter of the society, as set forth in the L. A. S. By-Laws, Article 5. Said chapters must also send a representative to at least one L. A. S. Executive Committee meeting during the year.

Newt Jackson seconded. Motion carried.

Linda then discussed the importance of collecting and properly storing all of the L. A. S. information from the past and present. Linda contacted Claudia Holland at the Louisiana Division of Archaeology, who, in turn, provided Linda with information on the procedures to follow in order to establish an archive.

Rich suggested that we begin by sending a letter to all past L. A. S. officers requesting information on what items they might have that could be placed in the L. A. S. Archive.

Linda will formulate such a letter, and Donita will research the current addresses of past officers. Rich will print a brief announcement in the L. A. S. Newsletter.

An Archive Committee consisting of officers and members who are locally available to help with the project will be formed. Preliminary regional members of the Ad Hoc Archive Committee will be:

Northwest — Donald Duncan
Southwest — Donita Burton
Southeast — Rich Weinstein
Central — Nancy Affeltranger

Any member is welcome and encouraged to assist in any capacity with this project.

New Business

Chapter reports then were presented:

Northwest — Harold Brice
Central — Ellis Denning
Delta — Newt Jackson
Baton Rouge — Rich Weinstein

Linda then initiated discussion on the 1994 L. A. S. Field School. She read a report that had been sent to her by Dennis Jones suggesting that the L. A. S. Field School be conducted at the Marksville site again this year. Ellis Denning also suggested that the L. A. S. consider working with the Central Chapter's ongoing excavation of a nineteenth-century cistern in Pineville.

A suggestion of possibly changing the term for the field school to something less formal was discussed. L. A. S. Field Schools are usually held over a weekend or on consecutive weekends, and consist mostly of members acquiring hands-on experience. They are not formal "schools." There are neighboring states, such as Arkansas and Texas, that offer more intricate and formal training that more appropriately can be termed a "field school."

The name change was tabled for future discussion. In addition, the Executive Committee encourages L. A. S. members to investigate all opportunities for learning more about archaeology.

Rich reported that he had received a postcard from an individual in Texas who was willing to purchase or trade artifacts. He requested that Rich publish his solicitation in the L. A. S. Newsletter.

Linda asked Donita to send this individual a letter explaining that the L. A. S. has a policy that forbids the membership from buying or selling artifacts. We will not publish the request in the newsletter.

Rich also announced that he has checked with several copy companies in Baton Rouge, and found that the cost of photocopying the newsletter would be more than the current offset printing costs. Rich did find,

however, that printing the newsletter with another company would be less costly than the printers currently being utilized. The cost of printing could be reduced further if the newsletter was printed on 11-by-17-inch paper, folded and then stapled along the center fold. This would produce a newsletter in the form of a booklet similar to the newsletter put out by the Southeastern Archaeological Conference.

Bob made a motion requesting that Rich follow up on the various options for printing the newsletter, using his discretion to come up with the most cost efficient and visually appealing product. Donita seconded. Motion carried.

With no further business, the meeting was adjourned.

**DELTA CHAPTER, L. A. S.,
ASSISTING ARCHAEOLOGICAL
SURVEY OF A
SPANISH COLONIAL VILLAGE
IN THE BARATARIA UNIT
OF THE JEAN LAFITTE
NATIONAL HISTORICAL PARK**

Delta Chapter, L. A. S., is providing the field crew for a survey of the remains of a Spanish Colonial village in the Barataria Unit of the Jean Lafitte National Historical Park. Work began on the survey in 1992. It is being supervised by Betsy Swanson and Thurston Hahn, under the direction of Dr. Charles Pearson of Coastal Environments, Inc. Funding is from Jefferson Parish, and grants made through the Delta Chapter. The purpose of the project is to add the village sites and features to the National Historic District in the park.

The village, which was established in 1778 by the Spanish government for Canary Islander immigrants, is now reforested after it was destroyed by numerous storms and floods. The linear agricultural settlement stretched for seven miles along Bayou de Familles, which was named for the Isleño families settled there. The house sites are located a few hundred feet apart along the

Camino Real de Barataria, which still follows the natural levee crest of the old distributary.

A total of 18 village house sites has been located in the park, some with auxiliary building sites nearby. The house sites consist of low mounds of earth measuring about 40 feet in diameter. They are usually associated with pits which were probably dug for borrow and/or the making of *bousillage* for wall construction.

The Spanish house sites are invariably situated on aboriginal middens containing potsherds dating from the Marksville to Historic periods. Other shell middens are also located along the corridor of village building sites in the park.

Both the Spanish and aboriginal sites are being shovel tested with 10-foot grids and measured with a transit to attain both elevations and horizontal extent. A two-mile-long baseline, with control points set at 100-foot intervals, was laid out through the park in order to map the village. The positions of the building sites are being recorded in relation to the reforested agricultural systems and other cultural features that comprise the Historic District.

European artifacts recovered from the village sites include British creamware and pearlware, French faience, and Spanish majolica, as well as coarse earthenwares, brick, daub or *bousillage*, mortar, glass sherds, and gunflints.

The sites were examined with metal detectors, and numerous metal artifacts were recovered. These include hoes, shovels, keys, musket pieces, a pewter spoon, buttons and buckles, strap hinges, pintles, hooks, nails and spikes, iron musket balls and lead shot, a pewter candlestick base, fragments of iron pots, and a pistol.

A number of the metal artifacts are being conserved as museum pieces by Delta Chapter member Malcolm Theriot under the direction of archaeologist Don Hunter of Coastal Environments, Inc. All of the artifacts are cleaned, sorted, and bagged by Delta Chapter volunteers (Figures 1 through 4). The

artifacts are then photographed before being analyzed by the CEI archaeologists.

The survey of the Spanish village will resume in October. All members of the L. A. S. are invited to join the field crew. Please call Betsy Swanson at (504) 461-5503 for more information. We hope to see you there.

(Photographs appearing as Figures 1 through 4 were taken by Linda Jackson.)



Figure 1. Duane Lassiter, Dan Shipman, and Betsy Swanson examining one of two whole, hand-made bricks dating to ca. 1778 and found at one of house sites.

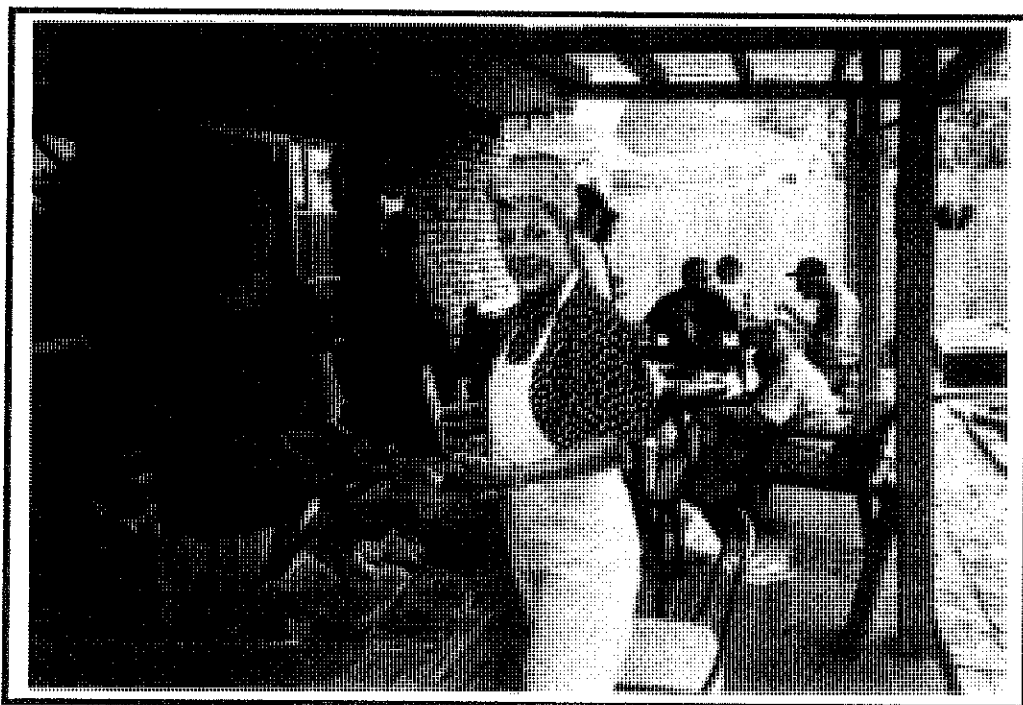


Figure 2. Betsy Swanson and Wilma Isbell cataloguing one of the two whole bricks found at one of the house sites.



Figure 3. Washing and sorting artifacts from the Isleños house sites. Left to right: Dan Shipman, Du Martin, Wilma Isbell, Bill Edwards, Malcolm Teriot, with Betsy Swanson supervising.

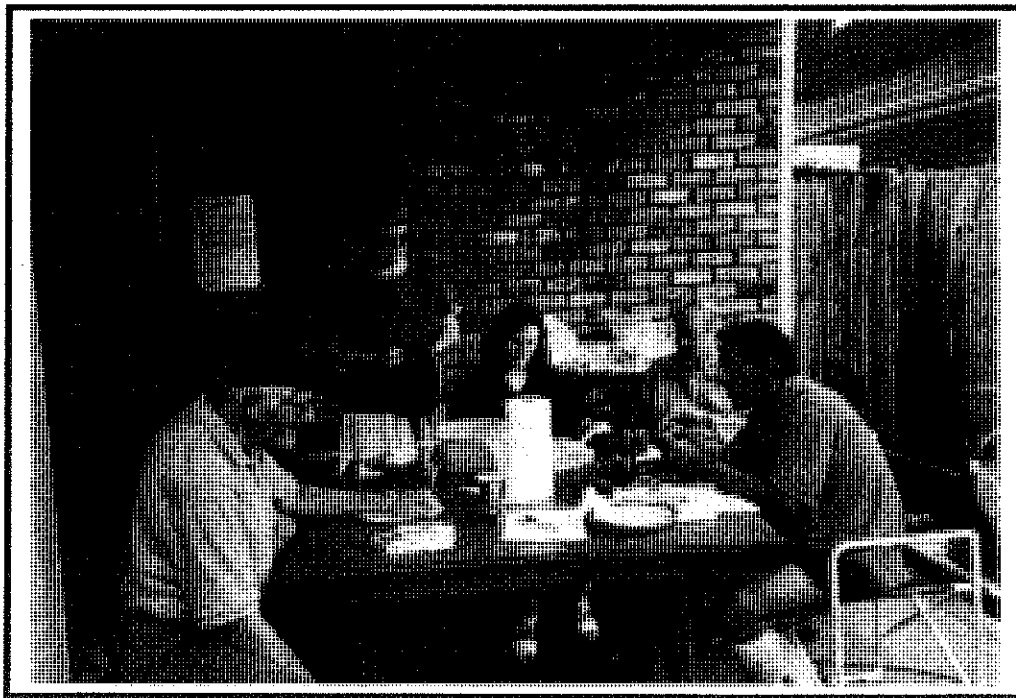


Figure 4. Washing and sorting artifacts at Roquey Jones's house. Left to right: Dan Shipman, Betsy Swanson, Maureen Downey, Roquey Jones, and Bobby Vrbaskovich.

CONTENTS OF LOUISIANA ARCHAEOLOGY

Submitted by
David Jeane
L. A. S. Treasurer

It has been eight years since the former Newsletter Editor, Charles Pearson, published a list of the contents of individual issues of the L. A. S. Bulletin, *Louisiana Archaeology*. Since I frequently receive requests from individuals concerning the contents of a specific bulletin, I thought it would be worthwhile to provide the membership with an up-to-date list of the articles, reviews, notes, etc., that can be found in the various issues of the bulletin.

It should be noted that Jon L. Gibson served as Bulletin Editor from inception of the publication until 1983 (Nos. 1 through 10). Robert W. Neuman then took over and has been Editor since the 1984 issue (No. 11). Unless otherwise noted, the year for which a particular number was produced also is the year of publication.

Number 1, 1974

- The Inaugural Issue of *Louisiana Archaeology*, by Jon L. Gibson.
Can the Professional and the Amateur Archaeologist Cooperate?, by Clarence H. Webb.
The Rise and Decline of Poverty Point, by Jon L. Gibson.
Big Oak and Little Oak Islands: Excavations and Interpretations, by J. Richard Shenkel.
Lithic Reduction Strategies at the George C. Davis Site, by Harry J. Shafer.
The Bruly St. Martin Site and its Implications for Coastal Settlement in Louisiana, by James W. Springer.
A Catahoula Stone Mask, by W. S. Baker, Jr.

Number 2, 1975

- Louisiana's Historic Indians, by Fred B. Kniffen.
Chitimacha Basketry, by Hiram F. Gregory and Clarence H. Webb.
Mounds Plantation (16CD12), Caddo Parish, Louisiana, by Clarence H. Webb and Ralph R. McKinney.

- The Poverty Point Site: North Sector Test Excavations, by Carl Kuttruff.
The Poverty Point Culture, as Seen from Southeastern Texas, by L. W. Patterson.
Prehistoric Settlement Patterns of the Young's Bayou Drainage, Natchitoches Parish, Louisiana, by Brent W. Smith.
Fire Pits at Mount Bayou (16CT35), Catahoula Parish, Louisiana, by Jon L. Gibson.
The Cicada in Southeastern Archaeology and in Coushatta Tradition, by Donald G. Hunter.

Number 3, 1976 (published 1977)

- Archaeological Techniques in the Louisiana Coastal Region, by Robert W. Neuman.
The Brackish Water Clam (*Rangia cuneata*): A Prehistoric "Staff of Life" or a Minor Food Resource, by Kathleen Mary Byrd.
Preliminary Evidence of Seasonal Fishing Activity at Bayou Jasmine, by Brian J. Duhe.
The Bel Site (16CU127): Urban Archaeology in Lake Charles, Louisiana, by Joe Frank.
A Ceramic Sequence from Southern Louisiana and Its Implications for Type Frequency Seriation, by James W. Springer.
A Reexamination of the Houses at the Bayou Goula Site, Iberville Parish, Louisiana, by Ian W. Brown.
Lacodon Arrowheads and Jaketown Perforators: A Possible Historical-Functional Analogue, by Jon L. Gibson.
Catahoula Type Projectile Points, by William S. Baker and Clarence H. Webb.
The Catahoula Projectile Point: A Distributional Study, by L. W. Patterson.
An Archaeological Survey of Northeastern Mexico, by Joel L. Shiner.

Number 4, 1977 (published 1979)

- Reminiscences, Ecology, Natural Resource Exploitation and Tradition, by Clarence H. Webb.
Excavations in the Atkins Midden at the Troyville Site, Catahoula Parish, Louisiana, by Donald G. Hunter and William S. Baker, Jr.
Excavations at the Pierre Clement Site, Cameron Parish, Louisiana, by James W. Springer.
Poverty Point Trade in South Central Louisiana: An Illustration from Beau Rivage, by Jon L. Gibson.

Human Effigy Vessels from Gold Mine Plantation, by Recca Jones, with Nina Helfert, Dwain Kirkham, and Woodrow Duke.

Delson Chevalier, 1919-1978, by Hiram F. Gregory, Jr.

Archaeology and Ceramics at the Marksville Site, by Alan Toth, reviewed by Jon L. Gibson.

Number 5, 1978 (published 1980)

The Hanna Site: An Alto Focus Village in Red River Parish, Louisiana, by Prentice Marquet Thomas, Jr., L. Janice Campbell, and Steven R. Ahler, with contributions by Jeffrey Altschul, Kathleen Mary Byrd, Frank N. Charles III, Marco Giardino, Hiram F. Gregory, Jr., John P. Lenzer, Andrea Shea, and Newell O. Wright, Jr.

Number 6, 1979 (published 1980)

Caddoan and Poverty Point Archaeology: Essays in Honor of Clarence Hungerford Webb, edited by Jon L. Gibson.

I Wonder about the World of Clarence Hungerford Webb, by Robert S. Neitzel.

The Doctor and Caddology: Dr. Clarence H. Webb's Contribution to Caddo Archaeology, by Hiram F. Gregory, Jr.

Clarence Hungerford Webb and Poverty Point Archaeology, by Jon L. Gibson.

Archaeological Bibliography of Clarence Hungerford Webb, 1939-1979, by Jon L. Gibson

Clarence Hungerford Webb, Careers in Pictorial Essay, by Jon L. Gibson, with Dorothy Dodd Webb.

Fourche Maline: An Archaeological Manifestation in Eastern Oklahoma, by Robert F. Bell.

The Caddoan Confederacies—Some Ecological Considerations, by J. Ned Woodall.

Jonas Short and Coral Snake Mounds: A Comparison, by Burney B. McClurkan, Edward B. Jelks, and Harald P. Jensen.

Preadaptation for the Southern Cult in the Caddoan Heartland, by S. Alan Skinner.

Distribution of Natchitoches Engraved Ceramics, by R. King Harris and Inus Marie Harris.

The Atlanta State Park Site in Northeastern Texas, by R. King Harris, Inus Marie Harris, and M. P. Miroir.

Lithic Technology in Northeast Texas, by Joel L. Shiner.

Poverty Point Period Social Organization in the Yazoo Basin, Mississippi: A Preliminary Consideration, by Jay K. Johnson.

Intrasite Structure at the Claiborne Site, by James E. Bruseth.

Speculations on the Origin and Development of Poverty Point Culture, by Jon L. Gibson.

Number 7, 1980 (published 1981)

Big Brushy: A Stratified Multiple Component Site at Fort Polk, Louisiana, by Thomas H. Guderjan and James R. Morehead.

Human Ecology at the Morton Shell Mound Site (16IB3), Iberia Parish, Louisiana, by Robin S. Futch.

Some Notes on Mississippian Period Ceramics in the Mississippi River Delta, by Dave D. Davis and Marco J. Giardino.

The Dawn of Writing in the New World: Tokens and Trade at Poverty Point, Louisiana, and Related Sites, by Burma H. Hyde and William J. Folan.

Mayan Blade Manufacture and the Bow and Arrow, by L. W. Patterson and J. B. Sollberger

Aerial Imagery in Locating and Managing Archaeological Resources along the Louisiana Coast, by Robert W. Neuman and Kathleen Mary Byrd.

Beau Mire: A Late Tchula Period Site of the Tchefuncte Culture, Ascension Parish, Louisiana, by Richard A. Weinstein and Philip G. Rivet, reviewed by Ian W. Brown.

The Caddo Indians of Louisiana, by Clarence H. Webb and Hiram F. Gregory, Jr., reviewed by Timothy K. Perttula.

The Caddo Indians of Louisiana: Reply to Perttula, by Clarence H. Webb.

Another Response to Perttula, by Hiram F. Gregory, Jr.

Reply to Webb and Gregory: One for the Road, by Timothy K. Perttula.

Number 8, 1981 (published 1982)

The Neutral Calorie? On the Maintenance of Ranked Societies in the "Agriculturally Deficient" Environment of Gulf Coastal Louisiana, by M. C. Webb.

Pontchartrain Tchefuncte Site Differentiation, by J. Richard Shenkel.

The Slate Site, a Poverty Point Lapidary Industry in the Southern Yazoo Basin, Mississippi, by Geoffrey R. Lehmann.

The Keenan Bead Cache, Lawrence County, Mississippi, by John Connaway.

Recent Research on Poverty Point Period Subsistence and Settlement Systems: Test Excavations at the J. W. Copes Site in Northeast Louisiana, by H. Edwin Jackson.

A Proposed Bone Tool Classification: A Case Study from Southeastern Louisiana, by Tristram R. Kidder and David A. Barondess.

The French House Site 22AD668: The White Earth Concession (1720-1729), by Joseph V. Frank III.

Recovery and Identification of Civil War Artifacts at a Site near Sunset, Louisiana, by Warren Bowen Wiggs.

Digging up Bones, by D. R. Brothwell, reviewed by M. K. Sandford.

Number 9, 1982 (published 1984)

The Troyville-Baytown Period In Lower Mississippi Valley Prehistory: A Memorial to Robert Stuart Neitzel, edited by Jon L. Gibson.

Memorial to Stu Neitzel, the Man and his Spirit, by Jon L. Gibson.

Robert Stuart Neitzel (1911-1980), by Jeffrey P. Brain.

Neitzel in Letters, by Jeffrey P. Brain and Ian W. Brown.

Neitzel in Images, by Jon L. Gibson.

The Troyville-Baytown Issue, by Jon L. Gibson.

The Troyville Concept and the Gold Mine Site, by John S. Belmont.

Temporal Frameworks: Archaeological Components and Burial Styles: The Human Osteology of the Mt. Nebo Site in North Louisiana, by Marco J. Giardino.

Old Creek, a Troyville Period Ossuary in LaSalle Parish, Louisiana: Reflections After a Quarter Century, by Jon L. Gibson.

Preliminary Report on Excavations at an Early Troyville Period Site (16ST6) on the West Pearl River, Louisiana, by M. C. Webb.

The Bellevue Focus: A Marksville-Troyville Manifestation in Northwestern Louisiana, by Clarence H. Webb.

The Southeastern Check Stamp Pottery Tradition: A View from Louisiana, by Ian W. Brown, reviewed by Brian J. Duhe.

Number 10, 1983 (published 1985)

Prehistory of the Ouachita River Valley, Louisiana and Arkansas, edited by Jon L. Gibson.

A Brief History of Archaeological Work in the Ouachita Valley, Arkansas, by Ann M. Early.

An Evaluatory History of Archaeology in the Ouachita Valley of Louisiana, by Jon L. Gibson.

Archaeological Investigations in the Ouachita River Valley, Bayou Bartholomew to River-ton, Louisiana, by Reza Bamburg Jones.

Mounds on the Ouachita, by Jon L. Gibson.

A Reconnaissance of the Boeuf Basin, Louisiana, by John S. Belmont.

Excavations at the Crane Lake Site (16MO41), Morehouse Parish, Louisiana, by G. R. Dennis Price.

Ouachita Prehistory, by Jon L. Gibson.

Louisiana Archaeology: An Index to the First Ten Years, by William E. Moore.

Number 11, 1984 (published 1987)

Louisiana Archaeological Society Members Honored at National Meeting, by Robert W. Neuman.

A Historical Dugout Canoe from Homochitto River in Franklin County, Mississippi, by James F. Barnett, Jr.

The Experimental Manufacture of a Ground Hard Stone Pendant, by Carey D. Weber.

Archaeological Testing of the Horton Cemetery (16EF66), Jackson, Louisiana, by Mary Huffman Manhein, Ann M. Whitmer, Douglas W. Owsley, and Murray K. Marks.

Burial Traditions of the Blue Bayou Coushatta, by Donald G. Hunter.

The Rosedale and Shellhill Discs: "Southern Cult" Evidence from Southeastern Louisiana, by Richard A. Weinstein.

Grand Houmas Village: An Historic Houma Indian Site (16AN35), Ascension Parish, Louisiana, by Bryan L. Guevin.

Comparative Aspects of Late Prehistoric Faunal Ecology at the Sims Site, by Dave D. Davis.

The Panola Plantation Site: A Plaquemine Burial Mound in Northeast Louisiana, by Reca Bamburg Jones.

Lithic Resources of Western Louisiana, by Paul V. Heinrich.

Prehistory of the Pearl River, Louisiana and Mississippi: Report on a Literature Search, by Bill Moore.

Number 12, 1985 (published 1990)

William "Bill" Baker, 1932-1988: A Tribute, by Hiram F. Gregory.

The Apalachee on Red River, 1763-1834: An Ethnohistory and Summary of Archaeological Testing at the Zimmerman Hill Site, Rapides Parish, Louisiana, by Donald G. Hunter.

The Red River Coushatta Indian Villages of Northwest Louisiana, 1790-1835, by Claude McCrocklin.

The Ouachita Indians of Louisiana: An Ethnohistorical and Archaeological Investigation, by Tristram R. Kidder.

Paleoindian Settlement on the Maçon Ridge, Northeastern Louisiana, by Mitchell Hillman.

Surface Surveys of the Insley Site, Franklin Parish, Louisiana, by David L. Griffing.

Number 13, 1986 (published 1990)

Recent Research at the Poverty Point Site, edited by Kathleen M. Byrd.

Excavations at the Poverty Point Site: 1972-1975, by William G. Haag.

Discussion after Haag.

Investigations at the Visitor Center, Poverty Point State Commemorative Area, 1978, by Deborah Woodiel.

Discussion after Woodiel.

Poverty Point Excavations, 1980-1982, by Joan Exnicios and Deborah Woodiel.

Discussion after Exnicios and Woodiel.

A View from the Outside: A New Look at Areas Adjoining the Poverty Point Site, by Jeffrey H. Altschul.

The Deep Six Paleosol: The Incipient Poverty Point Occupation, 1983 Excavations, by Glen S. Greene.

The 1985 Test Excavations of the "Dock" Area of Poverty Point, by Mitchell M. Hillman.

Discussion after Hillman.

Soils: Poverty Point. Soils on the Immediate and Locally Surrounding Poverty Point Area, by Thurman Allen.

Earth Sitting: Architectural Masses at Poverty Point, Northeastern Louisiana, by Jon L. Gibson.

Discussion after Gibson.

Future Research Directions, by Kathleen M. Byrd.

Mitchell Hillman, 1943-1987: A Tribute, by Jon L. Gibson.

Number 14, 1987 (published 1991)

Island In The Past: Archaeological Excavations at the Francis Thompson Site, Madison Parish, Louisiana, by Jon L. Gibson, with a contribution by John C. Calhoun.

Number 15, 1988 (published 1992)

Archaeological Investigations at the LSU Campus Mounds, edited by Robert W. Neuman.

Report on the Soil Core Borings Conducted at the LSU Campus Mounds Site (16EBR6), East Baton Rouge Parish, Louisiana, by Robert W. Neuman.

Archaeological Investigations at the LSU Campus Mounds Site, by Jeffrey Allan Homburg.

Number 16, 1989 (not yet published)

Number 17, 1990 (not yet published)

Number 18, 1991 (not yet published)

Number 19, 1992

Dr. Webb, edited by Jon L. Gibson and Hiram F. Gregory, Jr.

A Tribute to Clarence Hungerford Webb, by Jon L. Gibson and Hiram F. Gregory, Jr.

Clarence H. Webb (1902-1991), by Jon L. Gibson.

Recollections and More, including contributions by Michael Beckman, William S. Baker, Jr., James E. Bruseth, Kathleen M. Byrd, John M. Connaway, Lester C. Davis, Jr., James A. Fogleman, Joseph V. Frank, Jon L. Gibson, Hiram F. Gregory, Jr., James B. Griffin, William G. Haag, David R.

Jeane, John E. Keller, Dennis LaBatt, Harold B. Levy, Richard A. Marshall, Burney B. McClurkan, James R. Morehead, Dan F. Morse, Robert S. Neitzel, Robert W. Neuman, George W. Shannon, Jr., Frank F. Schambach, Dee Ann Story, Clarence H. Webb, Jr., Deborah K. Woodiel, and Don G. Wyckoff.

Archaeological Bibliography of Clarence H. Webb, by Jon L. Gibson and Hiram F. Gregory, Jr.

Number 20, 1993

The St. Gabriel Site: Prehistoric Life on the Mississippi, by Deborah Kay Woodiel.

Recent Work at the Ghost Site (16TE18), by Joe Saunders.

A Clovis Point Found at Cote Blanche Island, by Thomas A. Marckese.

Archaic Mounds in Louisiana: The Case of the LSU Campus Mounds Report, by Dennis Jones.

Reply to Mr. Jones Regarding the LSU Campus Mounds Report, by Robert W. Neuman.

Comments on the Age of the LSU Campus Mounds: A Reply to Jones, by Jeffrey A. Homburg.

YUCATAN'S ANCIENT ROOTS

By
W. P. "Bill" Leutze
Lafayette, Louisiana

The people who will visit Yucatan with the L. A. S. field expedition have plenty of available reading material concerning the Maya ruins of that land. I am sure most have long since discovered the University of Oklahoma Press, but they should especially note *An Archaeological Guide to Mexico's Yucatan Peninsula*, by Joyce Kelly, published just last summer. My own observations accord well with those of Mrs. Kelley except as pertains to Coba. She must have been tired by the time she got there as she missed most of the features that make Coba one of my favorites.

Easily overlooked is a small store of library material dealing with the postconquest history of Yucatan. For that reason, field trip

participants should make a special effort to obtain a copy of *Américas* magazine July-August issue, 1994. This contains an excellent article entitled "Yucatan's Ancient Roots." The article deals with henequen (*Yucca*) as it influenced the development of the Merida area in the 19th century. The pictures of crumbling palaces alone make it worth seeking out this issue, perhaps through your local library. These "ancient ruins" of the henequen boom surround the visitor to Merida. The article is well written and illustrated with outstanding photographs.

For anyone wishing to obtain a subscription to *Américas* magazine, they can contact the Organization of American States (OAS), publisher of the journal, at 19th Street and Constitution Avenue NW, Washington, D.C. 20006. Cost for a subscription is \$24.00 per year.

CHAPTER NEWS

Northeast Chapter

Reported by
Claire Davis

The May meeting of the chapter featured Ross Scott and other members of the Monroe Unit of Reenactors. Ross described how members of the unit act out Civil War and other historical events, and how some members have taken part in movies and other films. The Reenactors research customs, uniforms, and other things to make their activities as historically accurate as possible, and are constantly on the lookout for authentic artifacts to use and study.

UPCOMING MEETINGS

Southeastern Archaeological Conference

The 51st Annual Meeting of the Southeastern Archaeological Conference will occur November 9 through 12, 1994, in Lexington, Kentucky. This year the meeting will be held

jointly with the 39th Annual Meeting of the Midwest Archaeological Conference. Although the two conferences will hold concurrent sessions, there will be a single registration fee for both meetings. Local arrangements are being handled by Mary Lucas Powell of the W. S. Webb Museum of Anthropology, University of Kentucky. Program chairs are John and Margaret Scarry, also of the museum. Keynote speaker for the conference will be Dr. Allison Wylie of Western Ontario University.

The meeting will take place at the Radisson Plaza Hotel in Lexington (Tel. 606-231-9000). Room rates are \$75.00, and there is a cut-off date for registration of October 15. Registration for the meeting is \$35.00 before October 1, and \$40.00 after October 1. Student registration is \$25.00 and must include a photocopy of a valid student ID.

For more information, contact Mary Lucas Powell, 211 Lafferty Hall, University of Kentucky, Lexington, Kentucky 40506-0024 (Tel. 606-323-1959).

NEW PUBLICATIONS

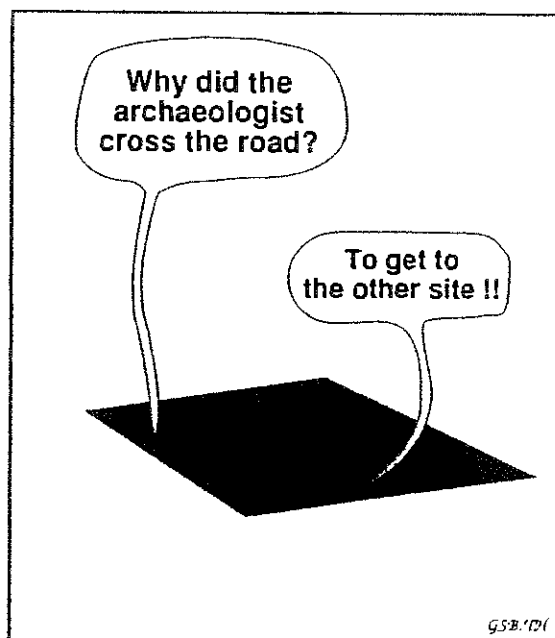
Louisiana State University Press announces the upcoming publication of *The Last Voyage of El Nuevo Constante: The Wreck and Recovery of an Eighteenth-Century Spanish Ship off the Louisiana Coast*, by Charles E. Pearson and Paul E. Hoffman. This long-awaited book contains all of the details of the sinking, salvage, archaeological investigations, artifact analyses, and historical research that were only touched upon in the 1981 publication by the Louisiana Archaeological Survey and Antiquities Commission.

The story Pearson and Hoffman together tell of this eighteenth-century Spanish merchantman is noteworthy because until now most research conducted on the Spanish *flotas* has been confined to the period before 700. With an abundance of maps, diagrams, photographs, and tables, the authors' rich collaborative document is the complete study of *El Nuevo Constante* and one of the best reports on shipwrecks excavated in recent times.

The publication should be available in December and contains 264 pages, 37 halftones, and 35 line drawings. Cost is only \$29.95. Information can be obtained by contacting Louisiana State University Press, P.O. Box 25053, Baton Rouge, Louisiana 70894-5053, Tel. (504) 388-6666.

BITS AND PIECES

David Jeane, the L. A. S. jack-of-all-trades, discovered the following cartoon while perusing a copy of *Santa Cruz Archaeological Notes*.



ERRATA

The captions for Figures 1 and 2 of Jeffrey Girard's article on the Onion Island site, printed in the last L. A. S. Newsletter (Vol. 21, No. 1) should be changed to note that the site is the "Onion Island" site, not the "Onion Lake" site. The editor apologizes for this error. He apparently has spent too much time in south Louisiana, particularly in the marshes of Cameron Parish, where the *Onion Lake* site actually is located.

Information for Subscribers

The *Newsletter of the Louisiana Archaeological Society* is published three times a year for the society by Coastal Environments, Inc., Baton Rouge. Subscription is by membership in the Louisiana Archaeological Society. Annual membership dues are \$15.00 for individuals, libraries, and institutions, \$2.00 for associates (relatives of individual members), and \$10.00 for students. Life membership dues are \$150.00 for individuals. Sustaining membership dues for individuals or institutions are \$300.00. In addition to the newsletter, members receive one issue per year of the bulletin *Louisiana Archaeology*. Membership requests, subscription dues, changes of address, and back issue orders should be directed to the Treasurer. Unless otherwise indicated, opinions stated herein are those of the Newsletter Editor and do not necessarily reflect society policy.

Information for Contributors

Send all notes, news, and other communications to: Richard A. Weinstein, Newsletter Editor, Coastal Environments, Inc., 1260 Main Street, Baton Rouge, Louisiana 70802. If possible, articles should be submitted on computer disk, preferably in Microsoft Word 4.0 or Word Perfect 5.1 or 6.0, although most other word processing programs can be translated. Style should conform to the guidelines published in *American Antiquity*, Vol. 57, No. 4 (Oct. 1992).

OFFICERS

President: Linda Jackson, 2216 Camp St., New Orleans, Louisiana 70130. Tel. (504) 523-2216.

President Elect: James Fogleman, P.O. Box 118, Morrow, Louisiana 71356. Tel. (318) 346-6980.

Secretary: Donita G. Burton, 1100 W. Crocker St., Sulphur, Louisiana 70663. Tel. (318) 527-3970.

Treasurer: David R. Jeane, 305 Hickory, Springhill, Louisiana 71075. Tel. (318) 539-4314.

Bulletin Editor: Robert W. Neuman, Rt. 2, Box 309-K, Natchitoches, Louisiana 71457. Tel. (318) 472-8158.

Newsletter Editor: Richard A. Weinstein, Coastal Environments, Inc., 1260 Main St., Baton Rouge, Louisiana 70802. Tel. (504) 383-7451.

LOUISIANA ARCHAEOLOGICAL SOCIETY
1260 MAIN STREET
BATON ROUGE, LOUISIANA 70802

ADDRESS CORRECTION REQUESTED

Nonprofit Organization
U.S. Postage
PAID
Baton Rouge, LA
Permit 1118

1994 Rec Member
Dr. Jon Gibson
120 Peta Dr
Lafayette, LA 70501

LOUISIANA ARCHAEOLOGICAL SOCIETY NEWSLETTER